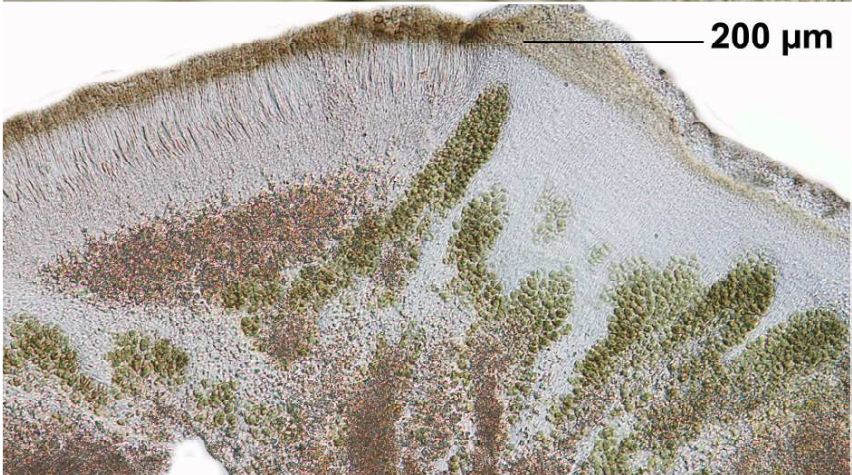
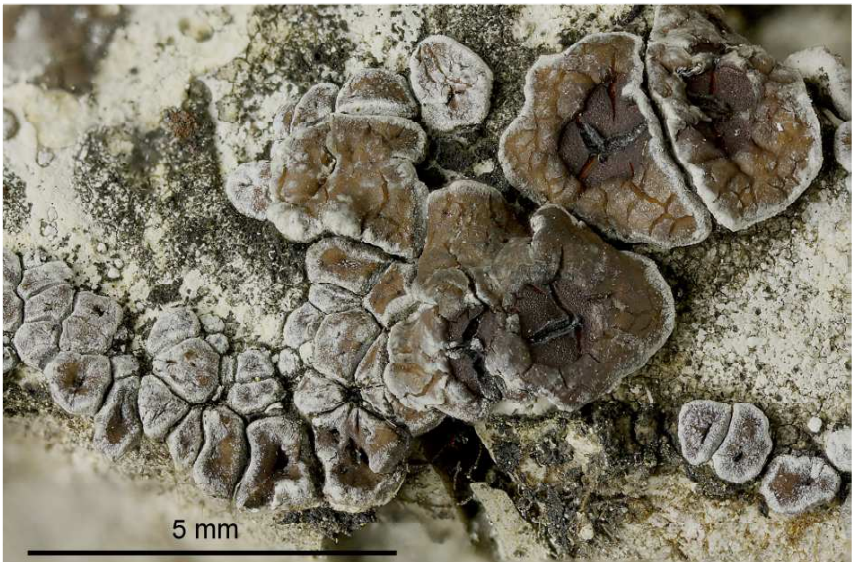
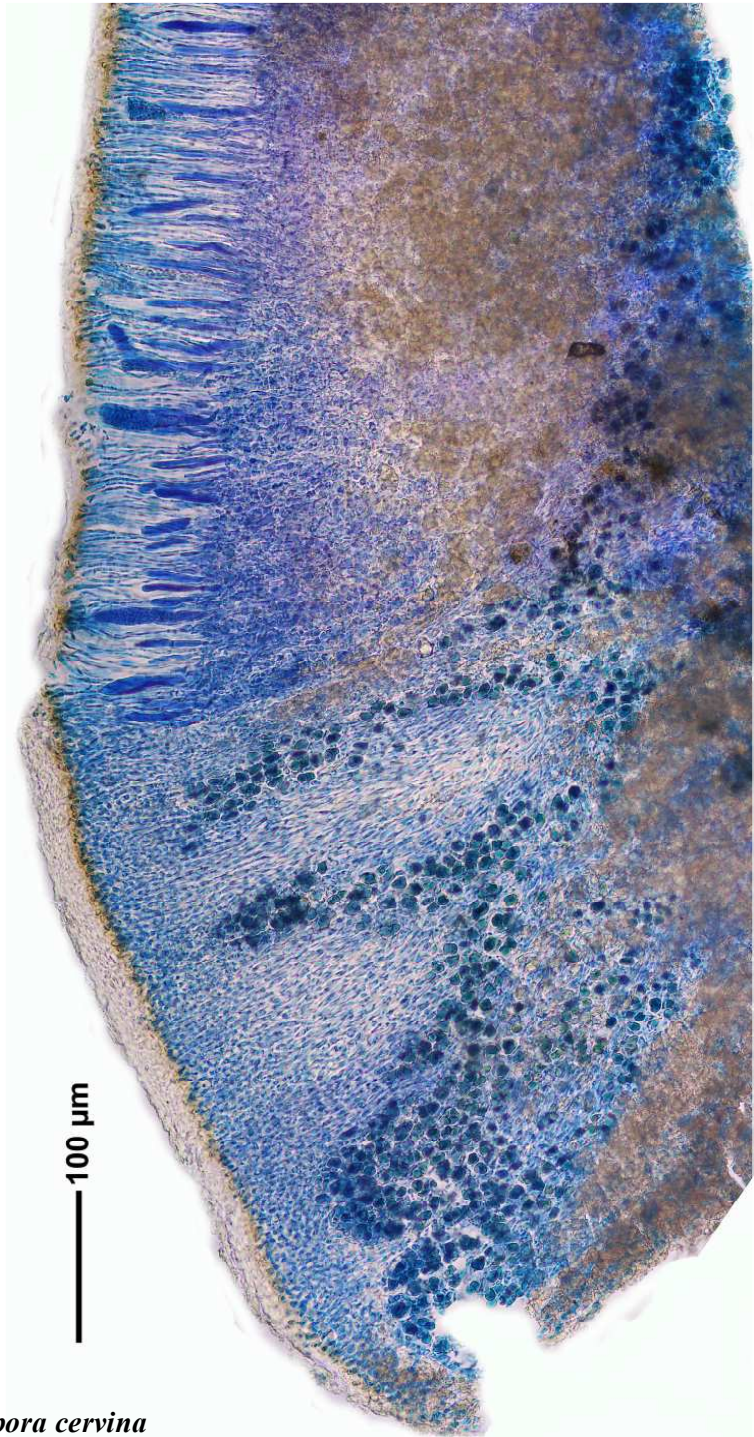


*Acarospora cervina* A.Massal.

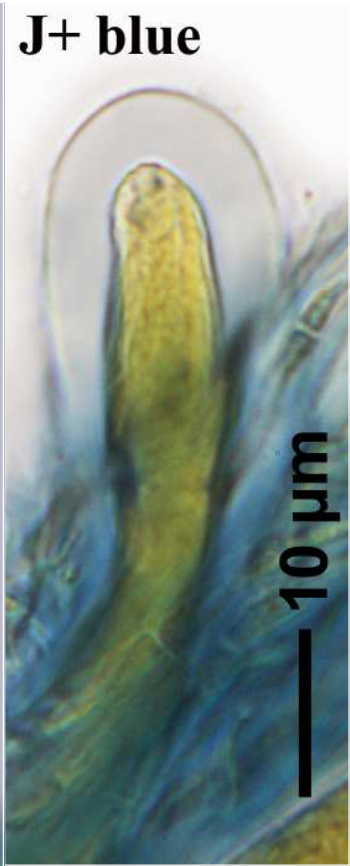
Thallusschuppen braun, 0,5-5 mm breit, ± vor allem am Rand weißlich bereift, Apothecien dunkelbraun, Scheiben unbereift, bis 1,5 (2,5) mm breit, eingesenkt, zu 1-4. Sporen 3,7-4,2 x 1,6-1,8 µm, mehr als 100/Ascus. Ch-.

[2636], Germany, Baden-Württemberg, Zollernalbkreis, an Kalkfelsen beim Lochenstein nahe Balingen, ca. 900 m, leg. et det. Schumm 26.06.1978.

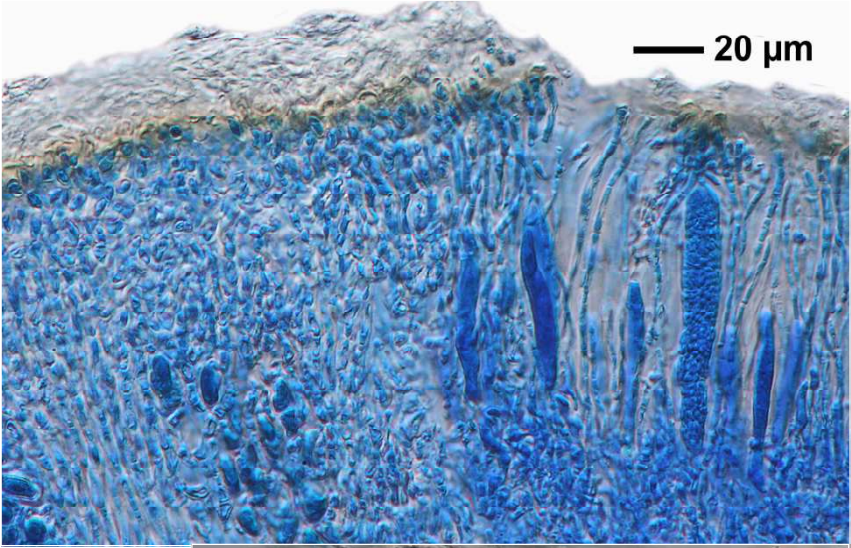




*Acarospora cervina*



*Acarospora cervina*



*Acarospora cervina*