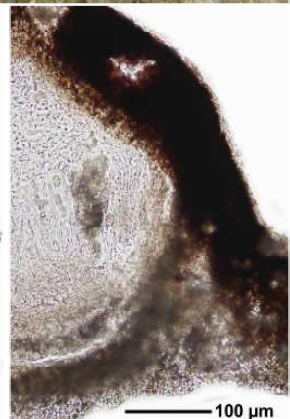
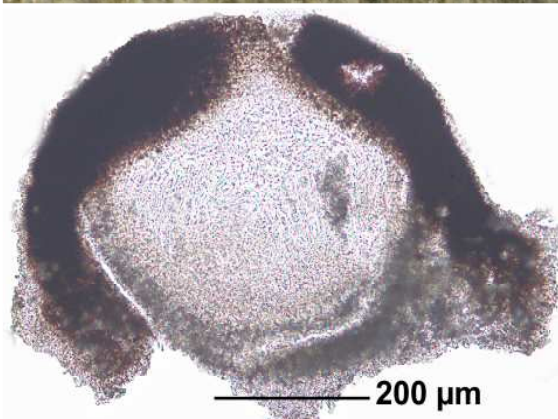
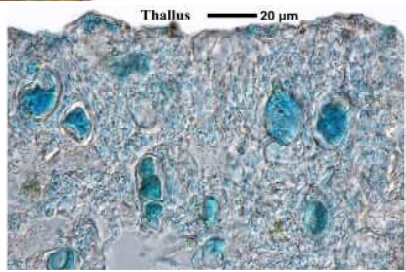
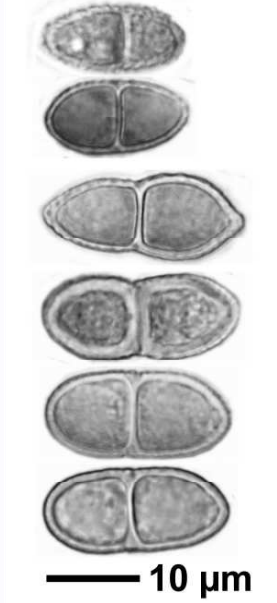
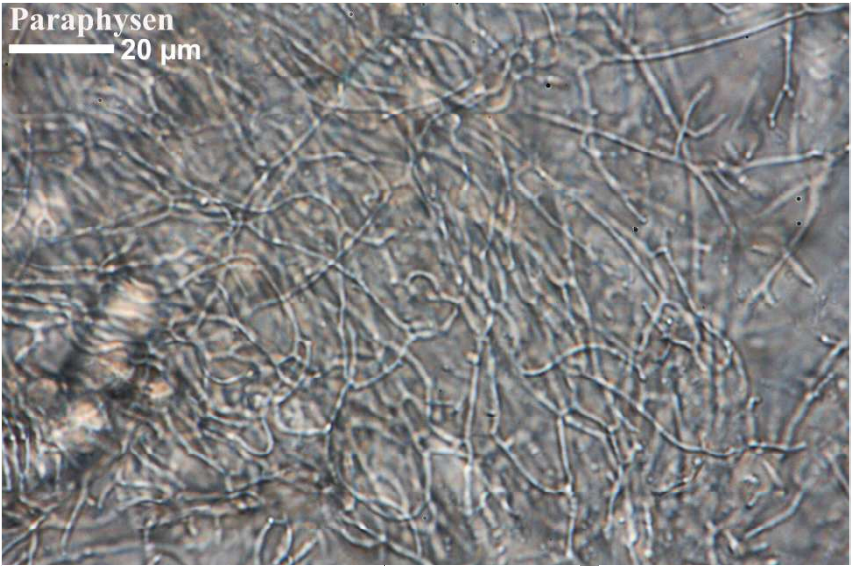


Acrocordia conoidea (Fr.) Körber

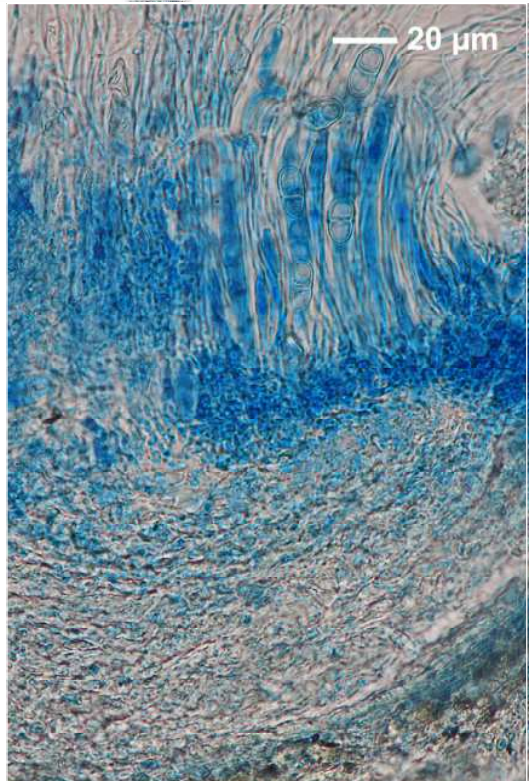
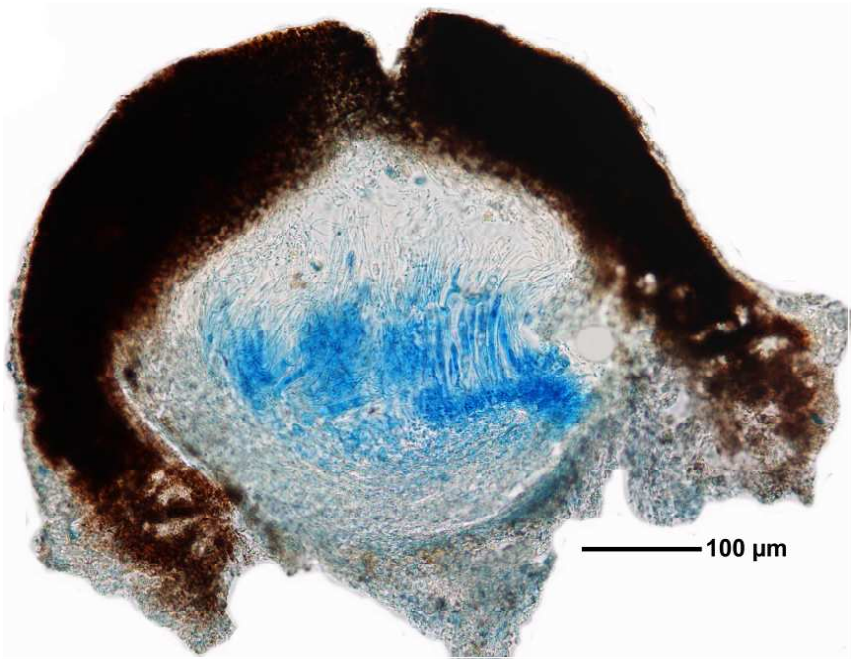
Thallus grau, glatt oder feinkörnig, weitgehend endolithisch. Peritheci-
en 0,5-1 mm, 1/4-1/2 eingesenkt, konisch bis halbkugelig. Braunes
Involucrum am Grund seitlich abstehend. Paraphysen stark ver-
zweigt. Sporen einreihig, 12-19 x 6-9 μ m, Oberfläche meist warzig.
Ch-. – An feucht schattigen Kalkfelsen

[70], Germany, Baden-Württemberg, Kreis Göppingen. Degenfeld,
Kalkblöcke am Gipfel des Galgenberges. Leg. et det. Schumm
26.01.1969, vid. O. Klement.





Acrocordia conoidea



Acrocordia conoidea

