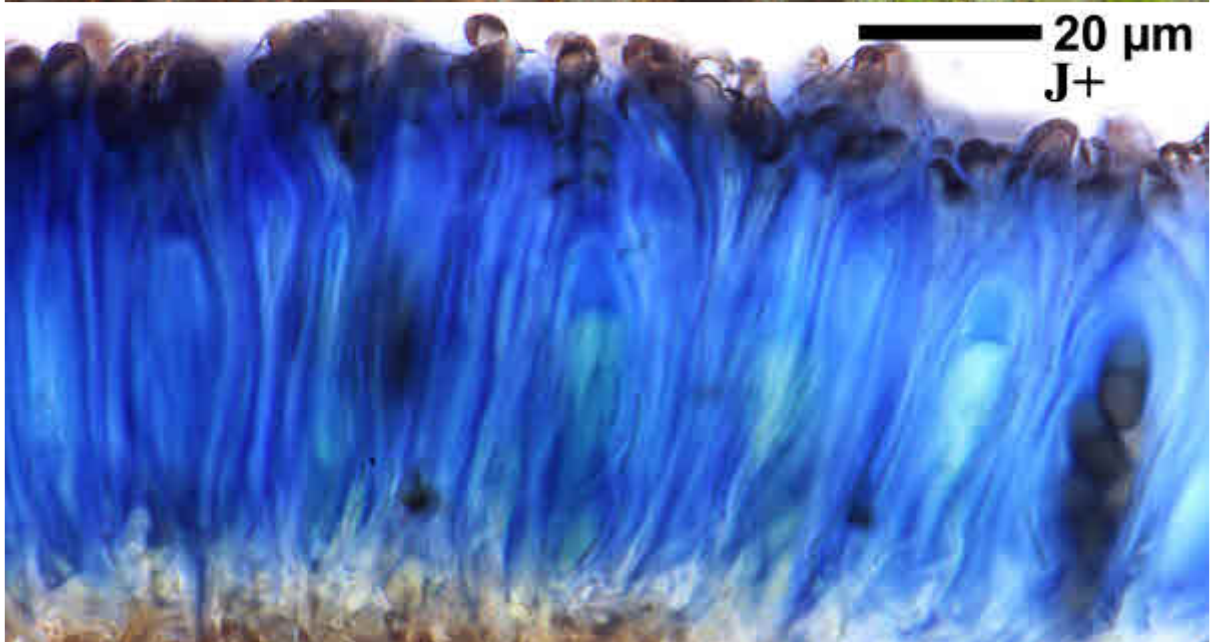
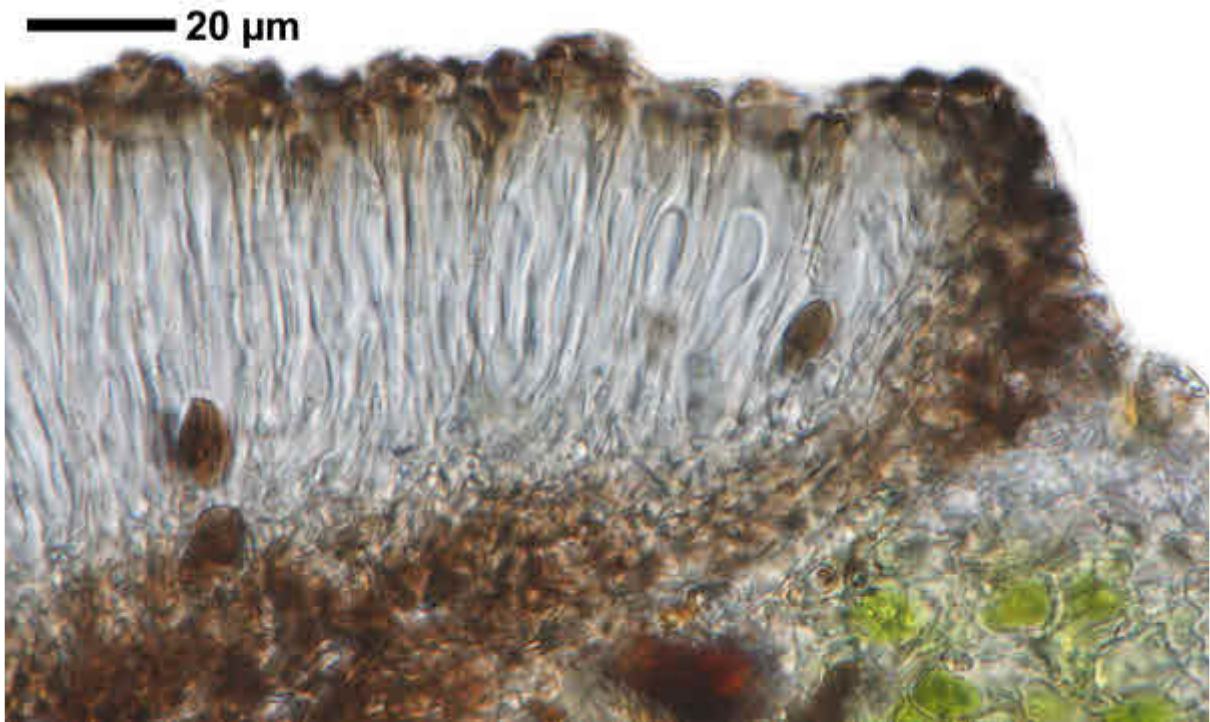


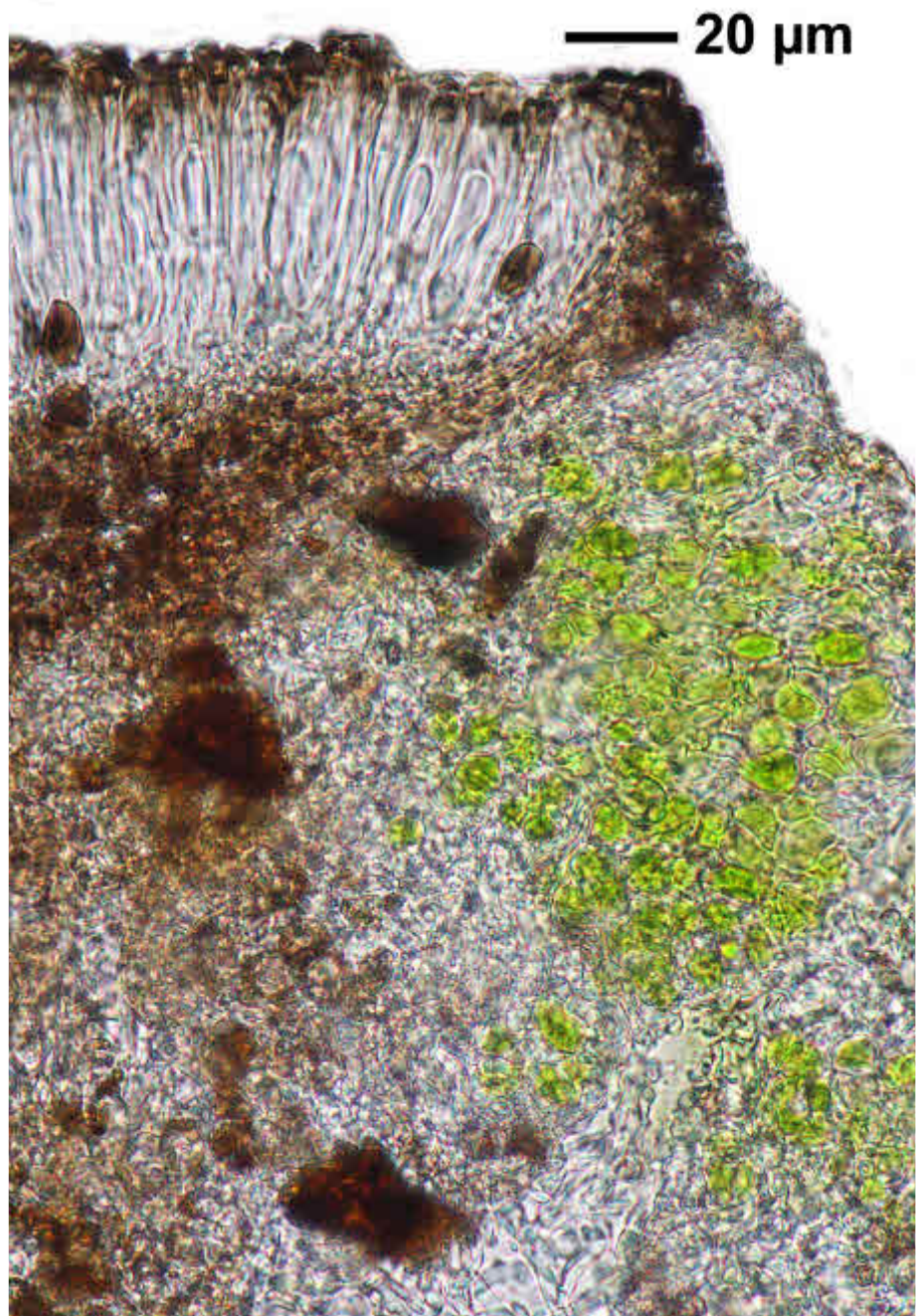
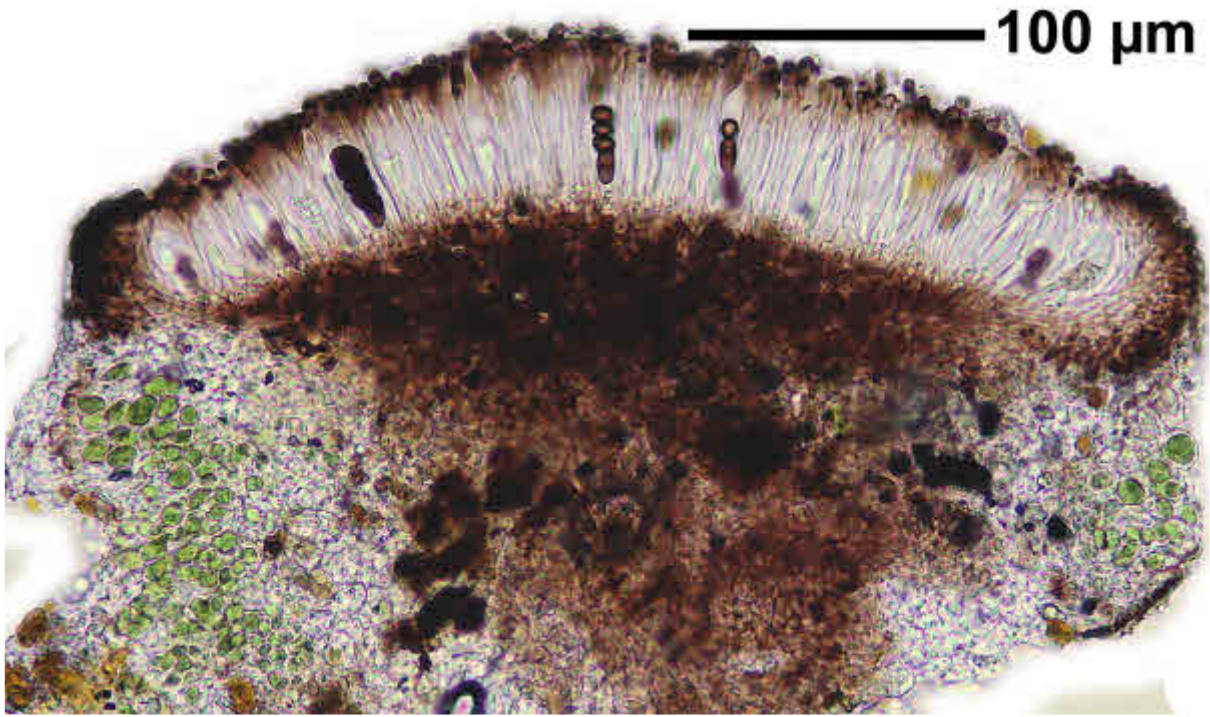
Amandinea punctata (Hoffm.) Coppins & Scheid.
 [= *Buellia punctata* (Hoffm.) A.Massal.]

Thallus grau. Apothecien aufsitzend. Sporen grau bis braun, 2-zellig,
 8/Ascus, ca. 12-13 x 6-7 µm. Mark K-, J-.

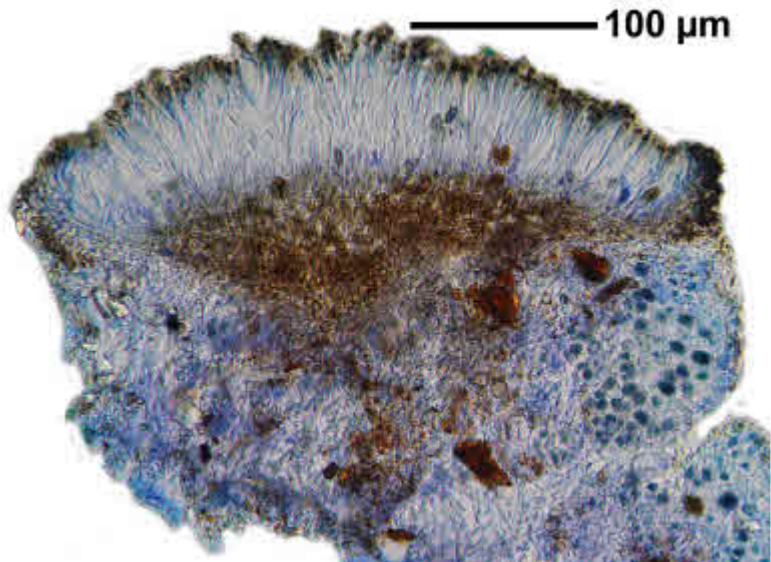
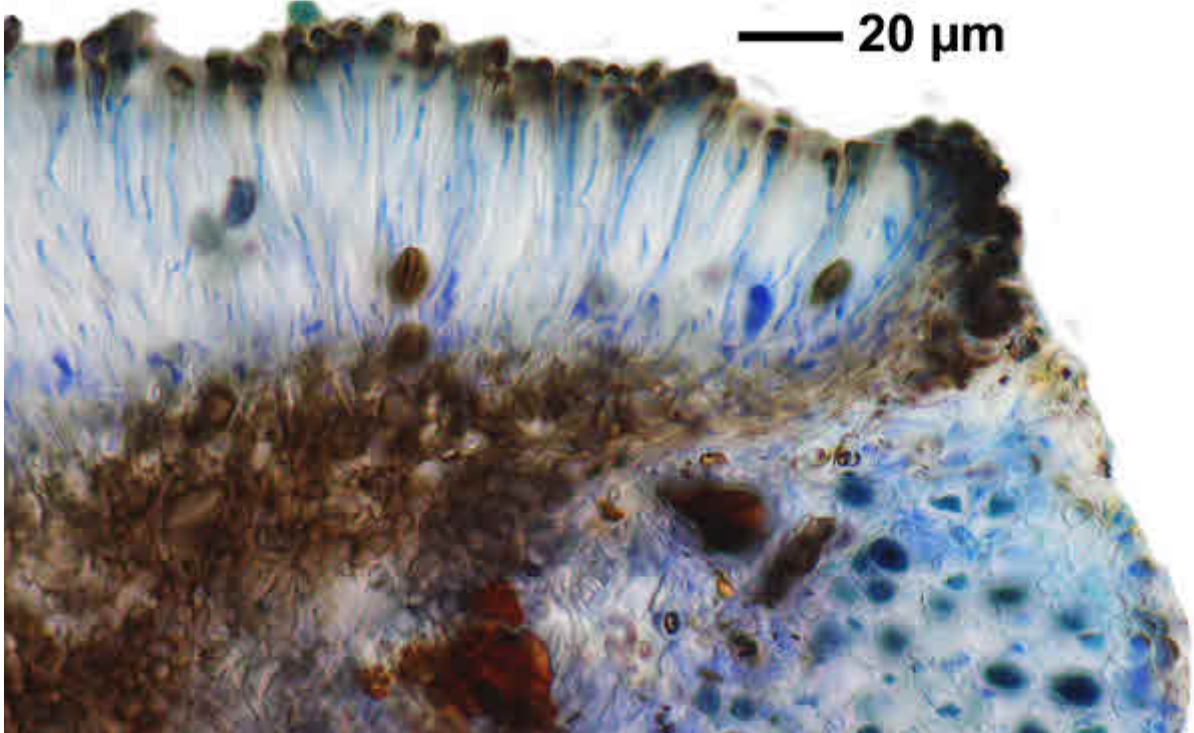
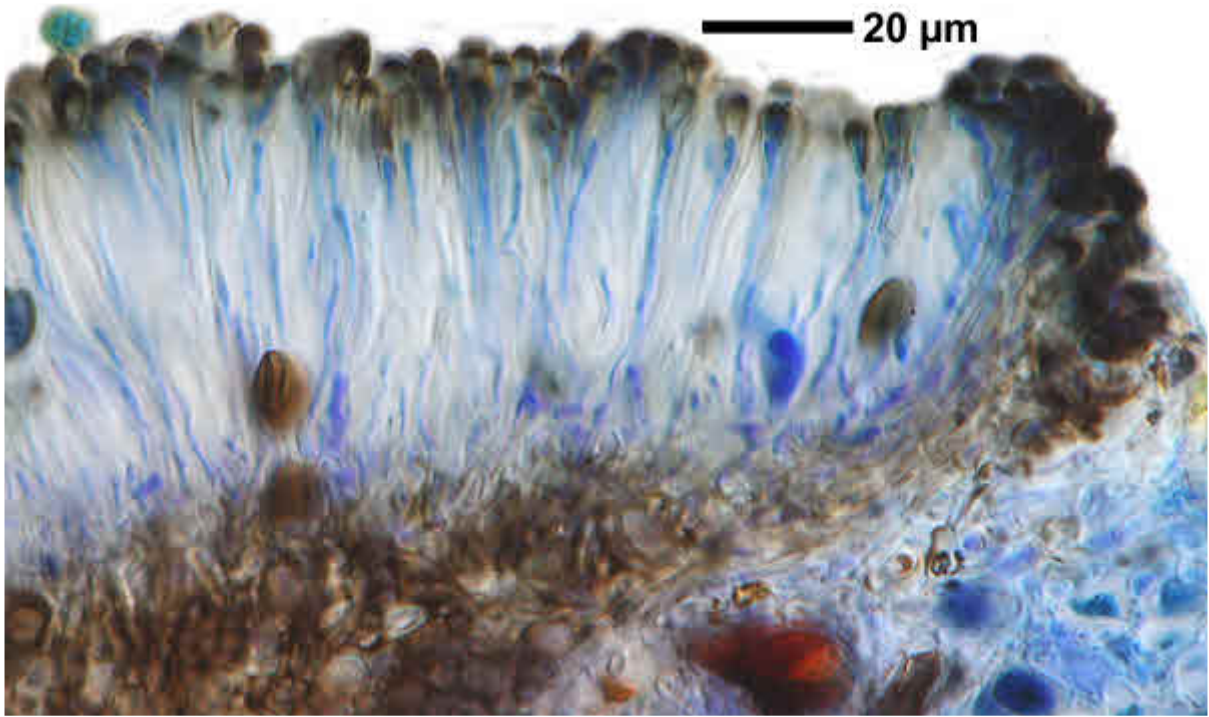
[16541], Germany, Baden-Württemberg, Schwarzwald-Baar-Kreis, an
 der Straße von Hornberg nach Schramberg, Abbiegung zum Käppel-
 hof. 48,22853° N, 8,31805° E, 670 m. An Granit. Leg. et det. Schumm
 07.07.2010.



Amandinea punctata



*Amandinea
punctata*



Amandinea punctata