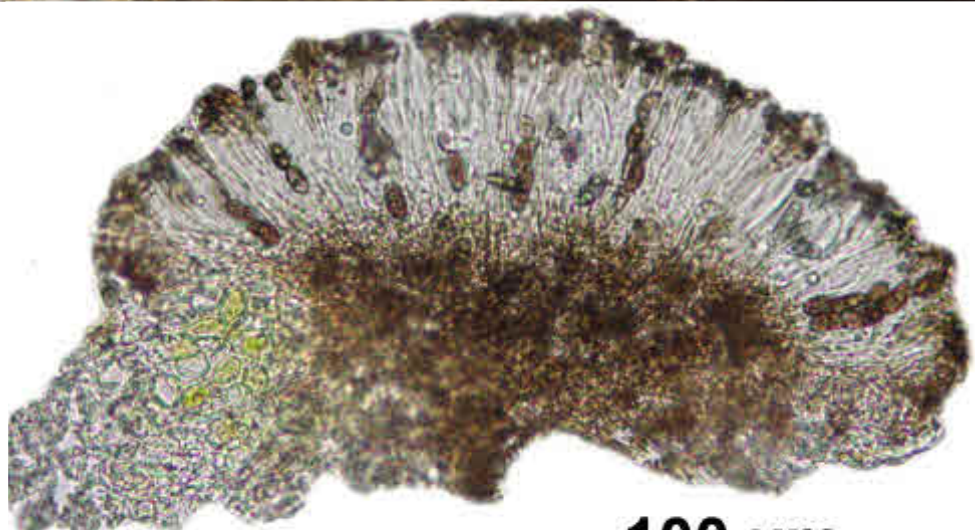
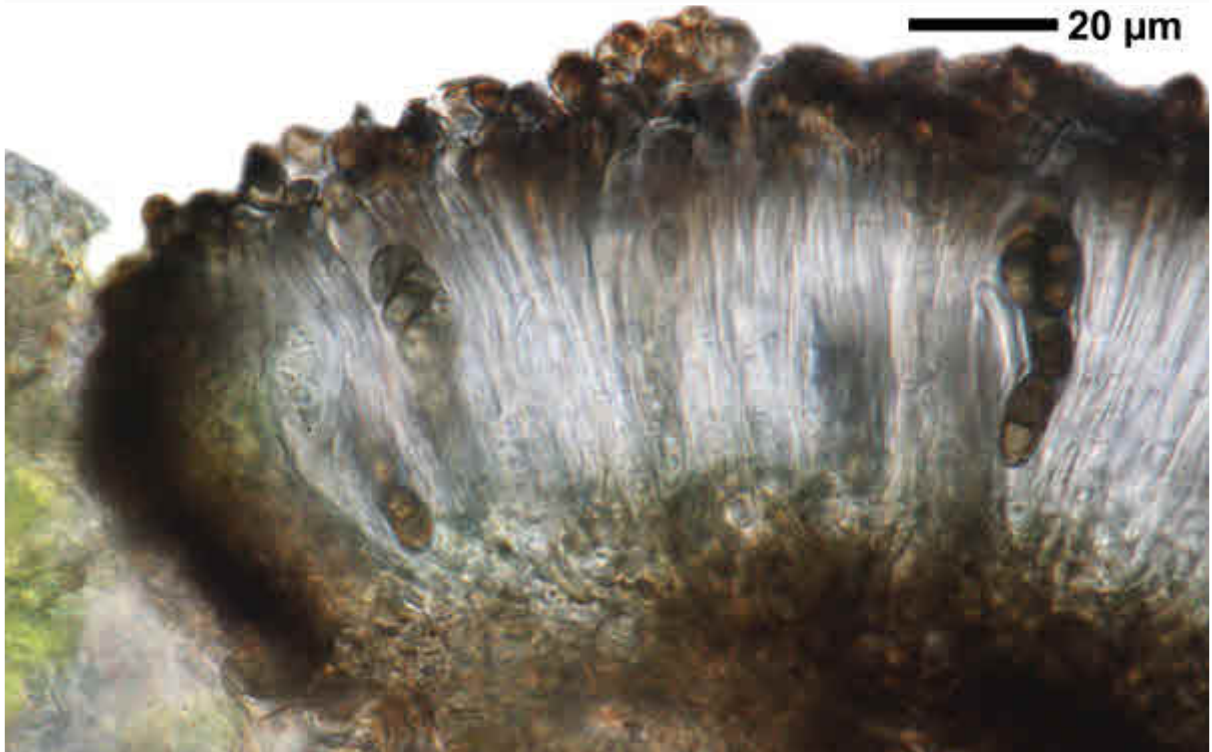
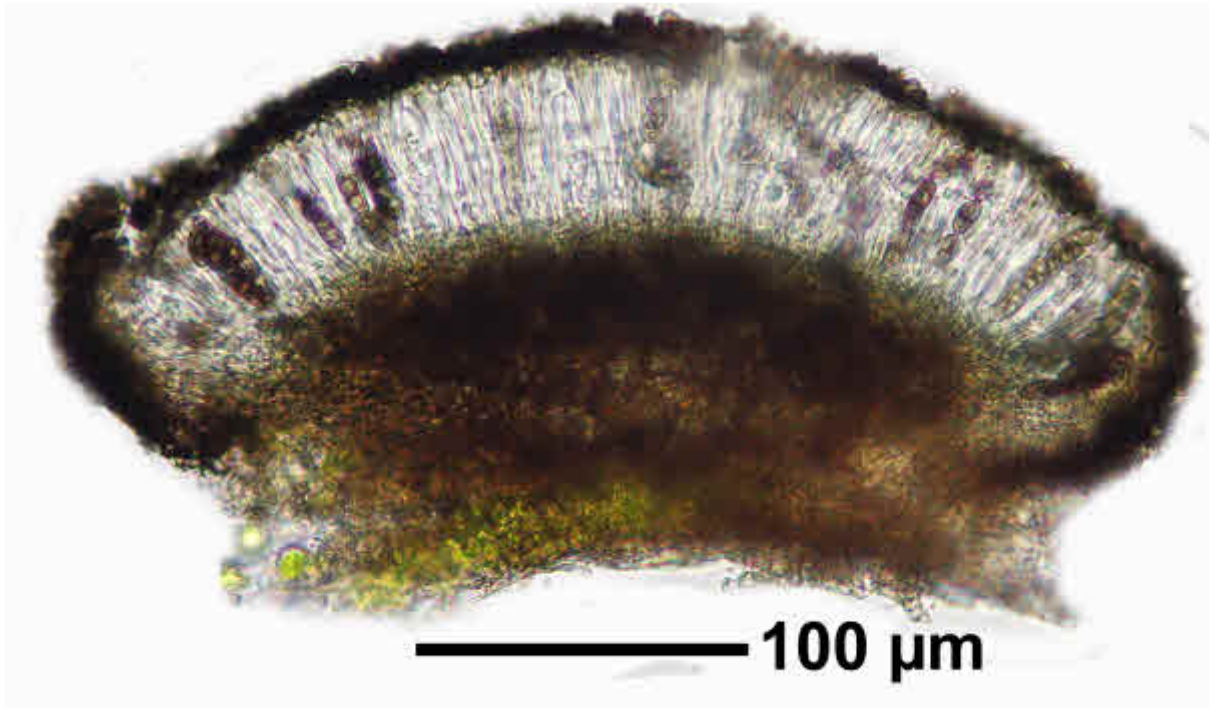


Amandinea punctata (Hoffm.) Coppins & Scheid.

Thallus fast fehlend, K-. Apothecien schwarz, randlos, hochgewölbt, 0.25-0.3 mm. Epithecium braun, 3.3 μm . Hymenium hyalin, nicht inpers, 50 μm . Hypothecium braun. Paraphysen am Ende mit braunen Pigmentkappen, K-. Sporen braun, 2-zellig, 8/Ascus, ca. 15 x 6 μm .

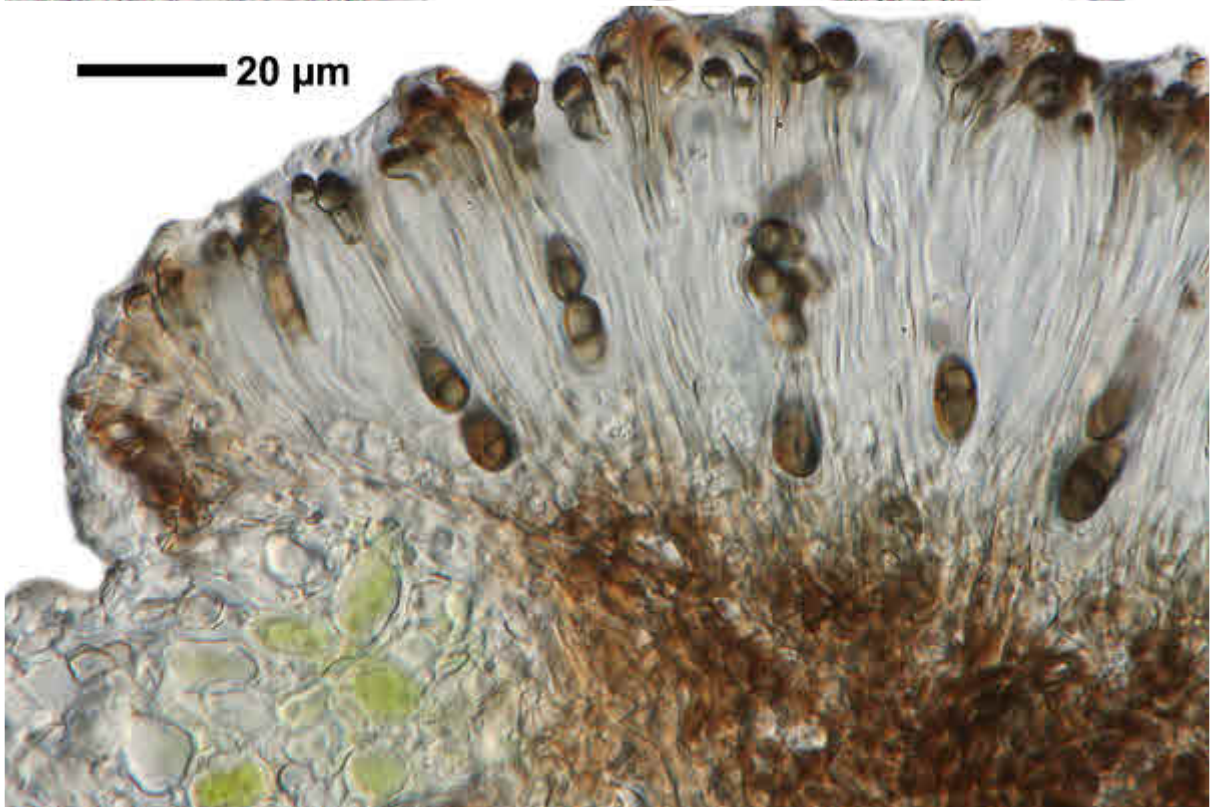
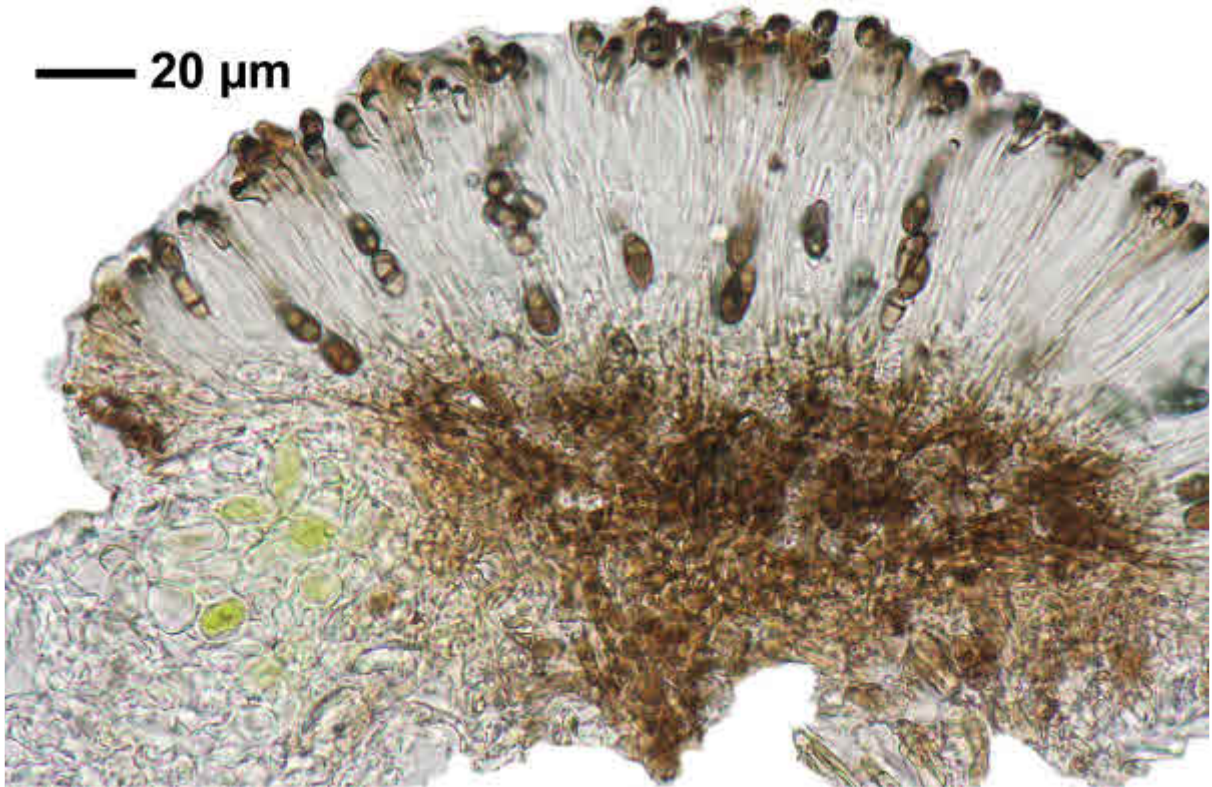
[17983], Germany, Baden-Württemberg, Kreis Göppingen, südlich von Faurndau im Pfuhlbachtel, an Zaunpfählen aus Holz; 48.69490° N, 9.61878° E, 320 m. Leg. Schumm 21.04.2012, det. Schumm.



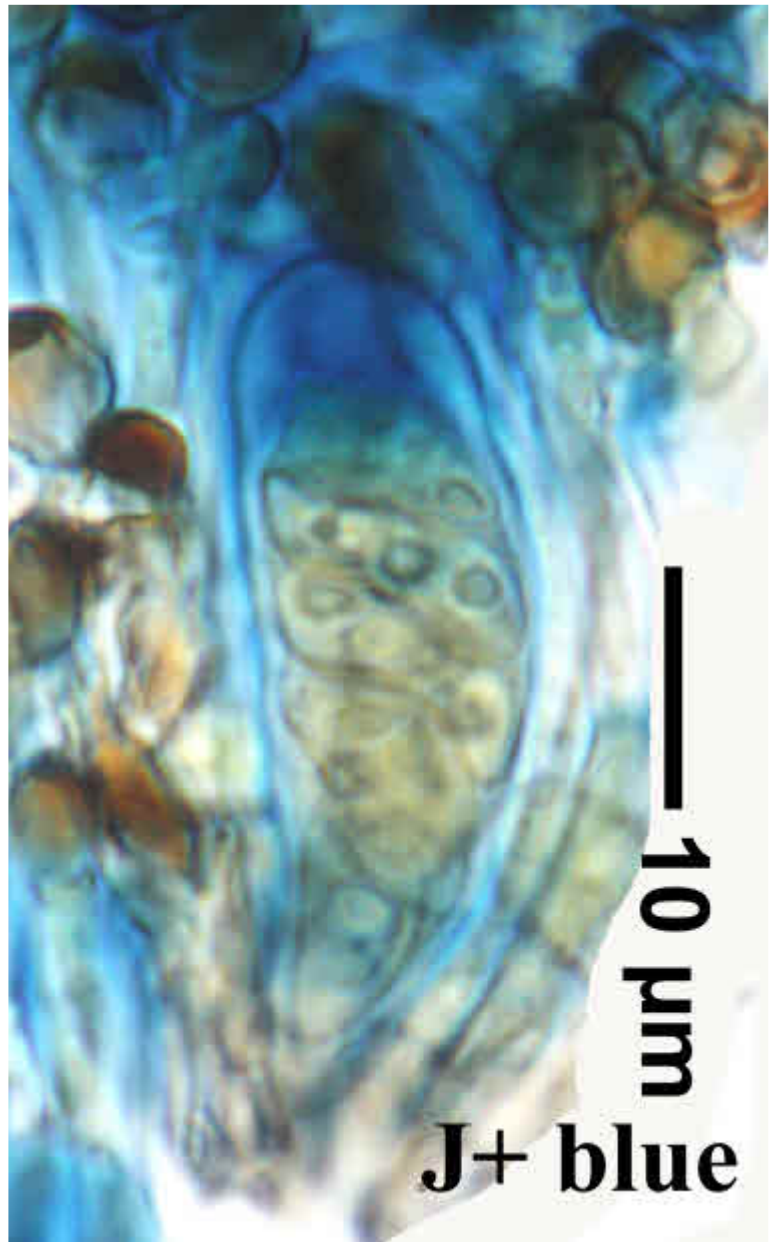
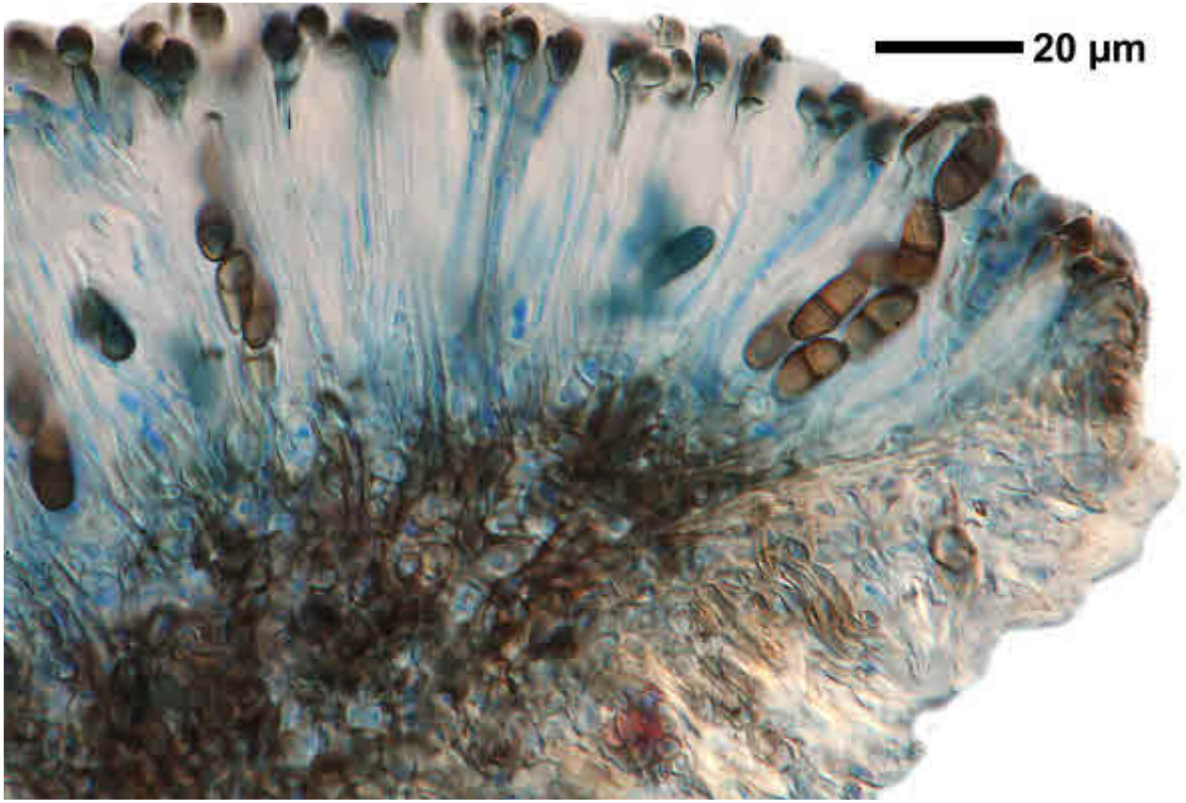


Amandinea punctata

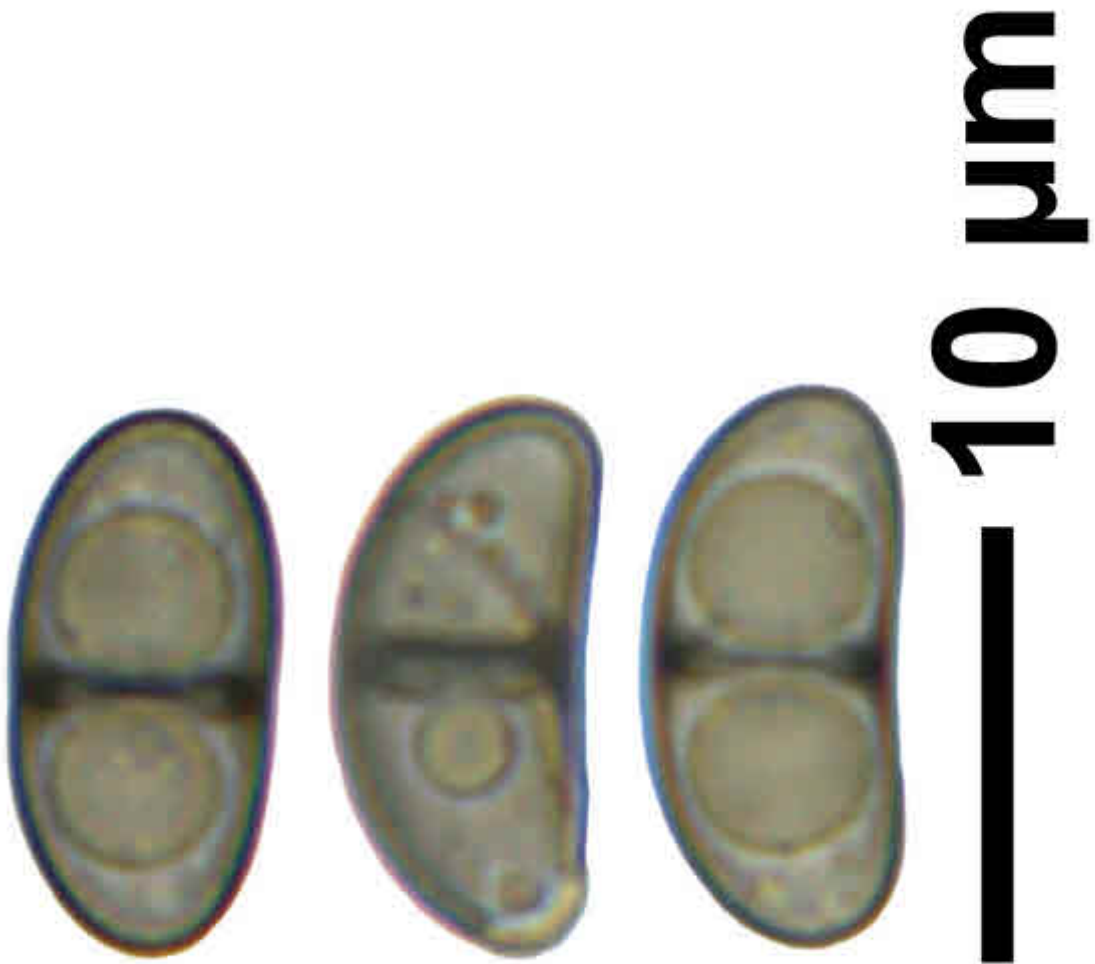
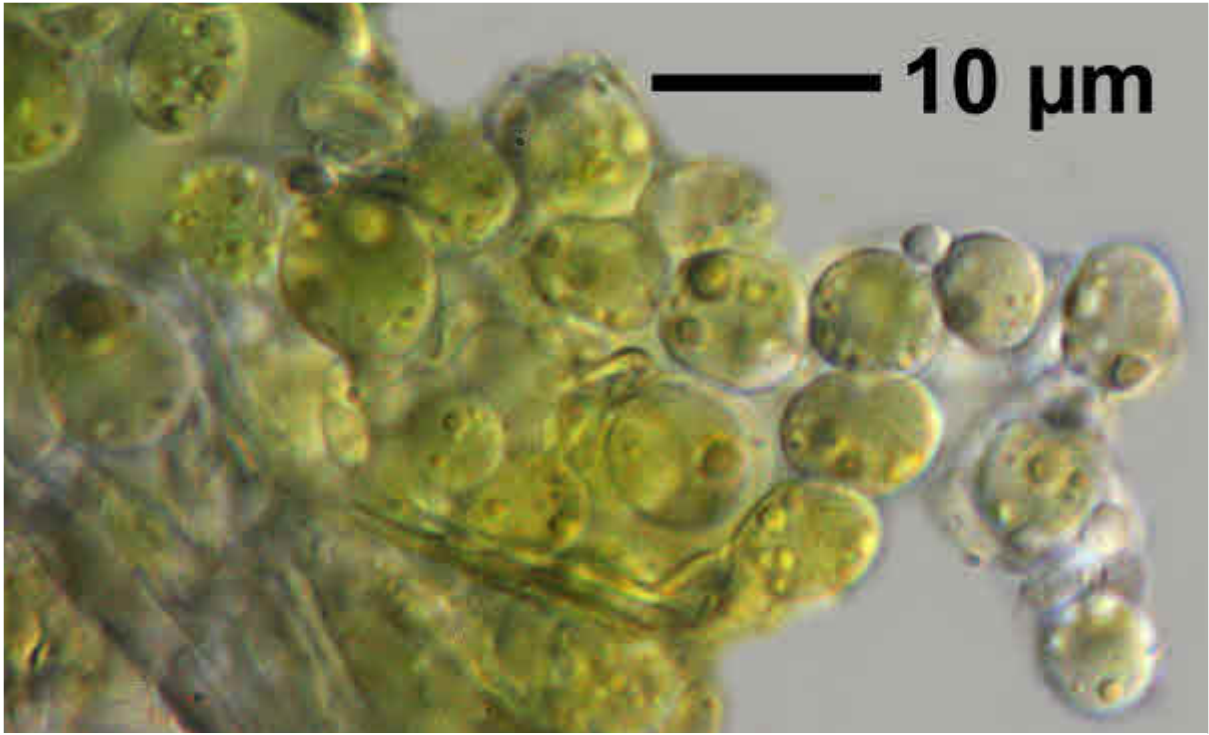
100 µm



Amandinea punctata



Amandinea punctata



Amandinea punctata