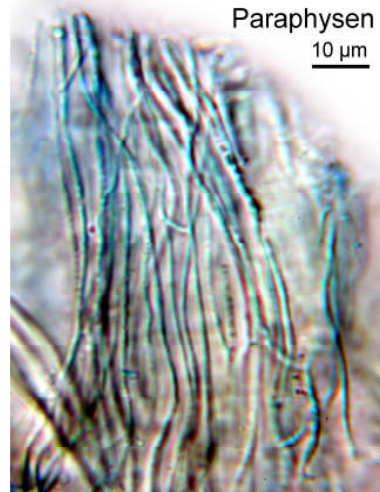
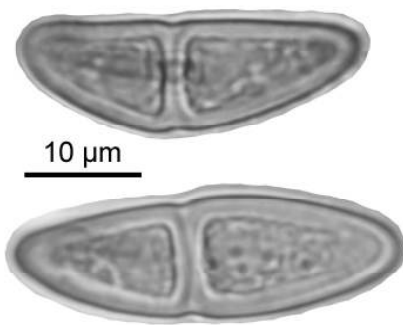
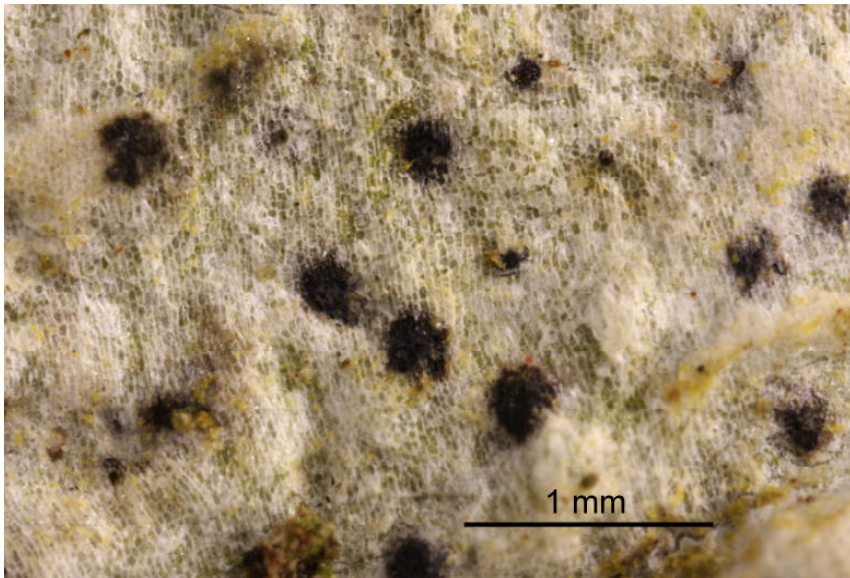
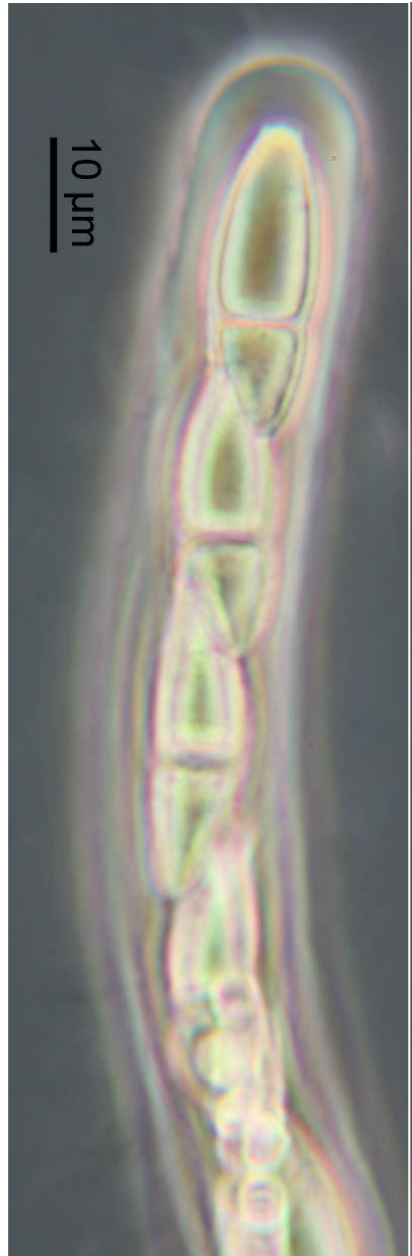


Anisomeridium ambiguum (Zahlbr.) R.C.Harris

Spores hyaline, 1-septate, 8/ascus, 27-34 x 10-11 μm , septum submedi-an. Paraphyses nearly not branched. Thallus UV+yellow. Palaeotropical.

[14393], Seychellen, Praslin, Mündung des Cote Or River, östlich von Anse Volbert Village, 4°18.996' S, 55°44.780' E, 2 m, auf Cocos. Leg. Schumm & Frahm 29.09.2008, det. Aptroot 2008.





Anisomeridium ambiguum