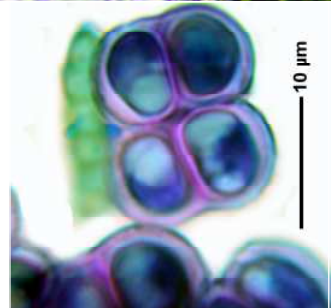
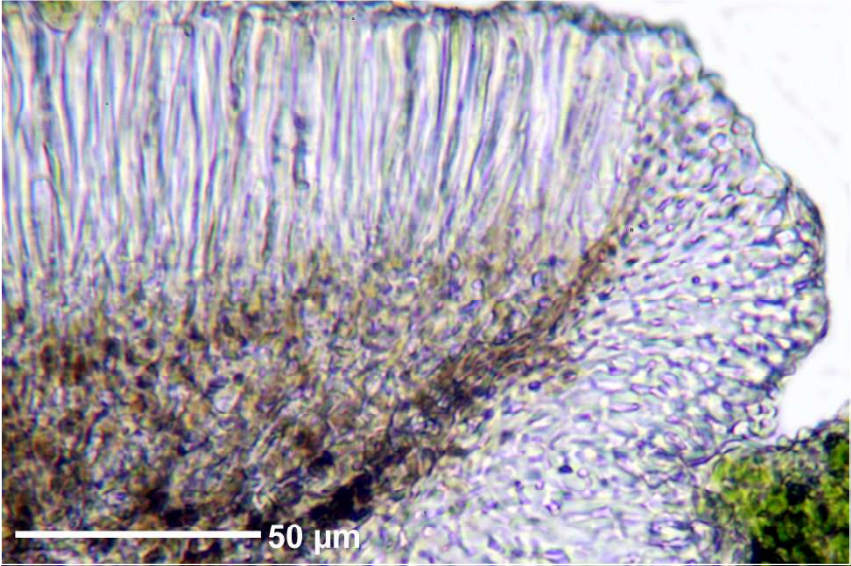
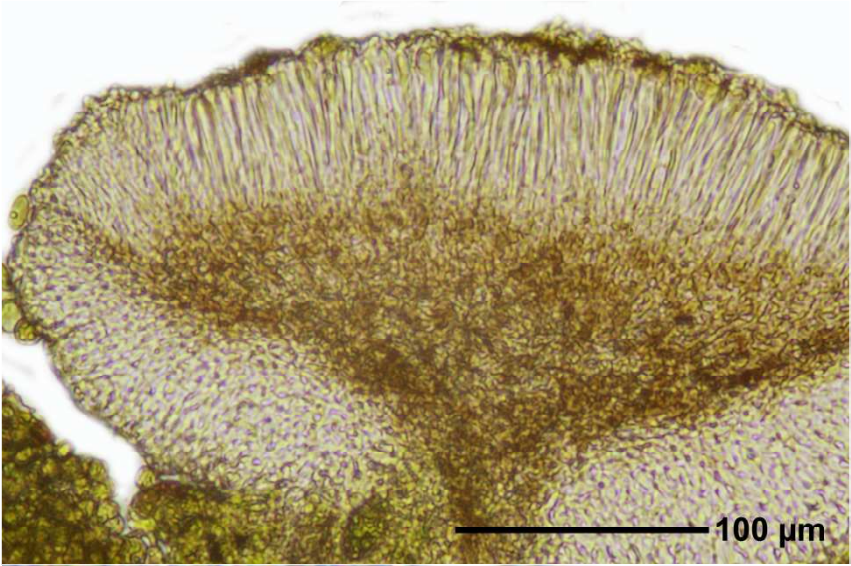


Bacidia arnoldiana Körber

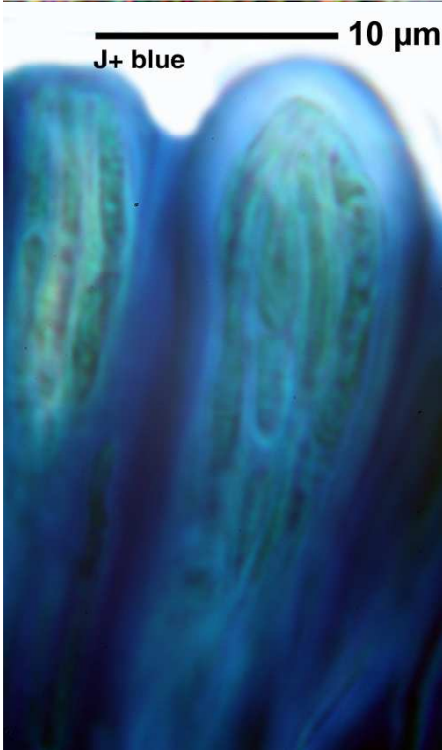
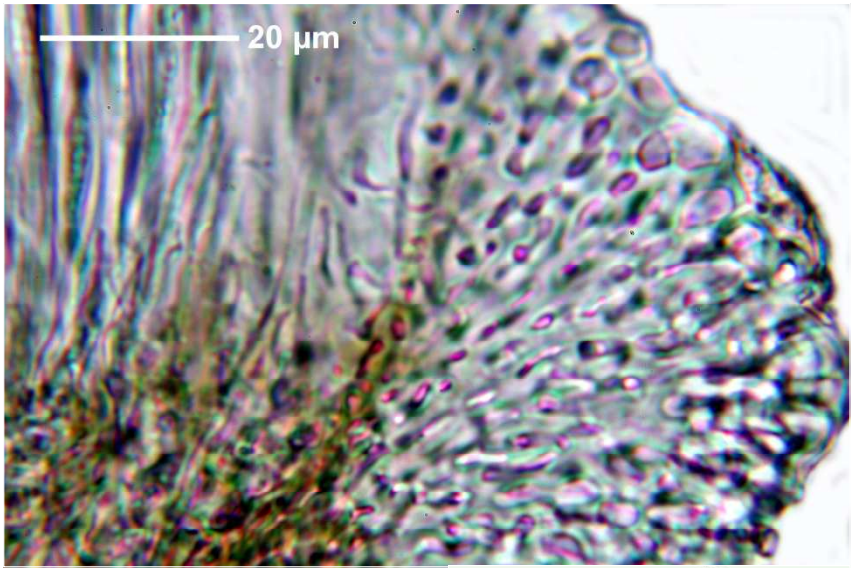
Epithecium hell bis gelblich; Hymenium hyalin, 65 μm , J+ blau; Hypothecium braun, 76 μm ; Rand ohne Algen; Algen 12 μm breit; Sporen ca. 7-septiert, 32 x 1,4 μm

[14882], Germany, Baden-Württemberg, Kreis Göppingen, Marbachtal bei Zell-Börtlingen. 48°45.140' N, 9°38.745' W, ca. 350 m, Waldrand in Bachnähe, luftfeucht, lichtoffen, an Laubbaum, TK 7223. Leg. Schumm 26.04.2009, det. Schumm.





Bacidia arnoldiana



Bacidia arnoldiana