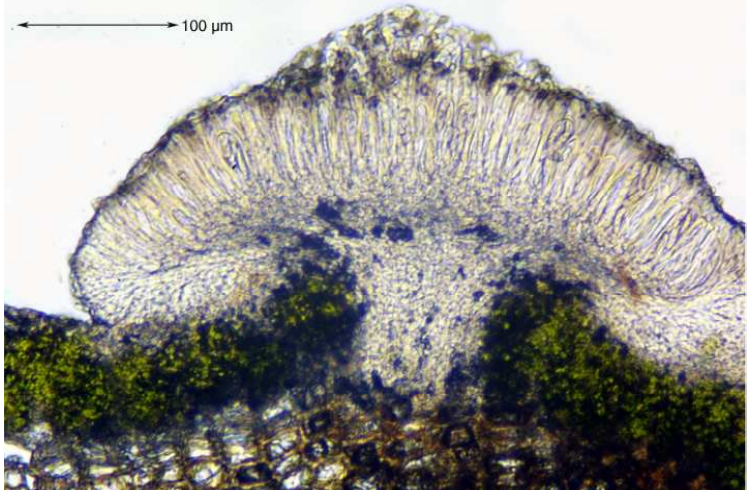


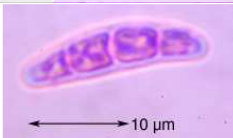
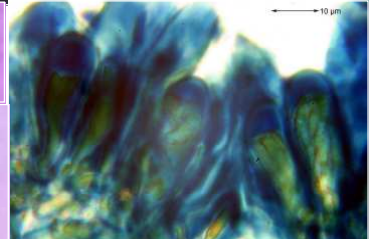
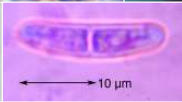
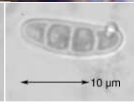
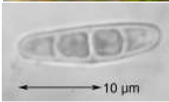
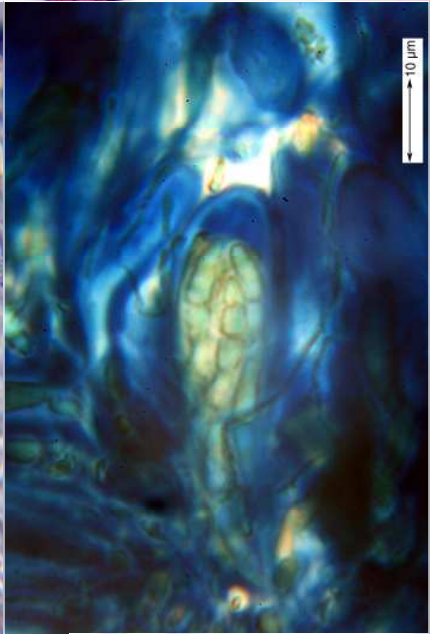
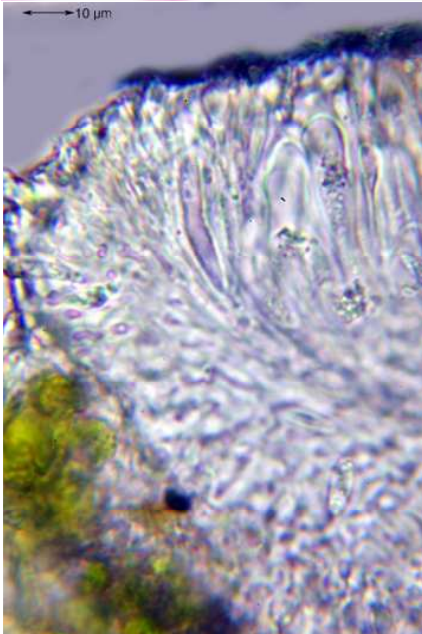
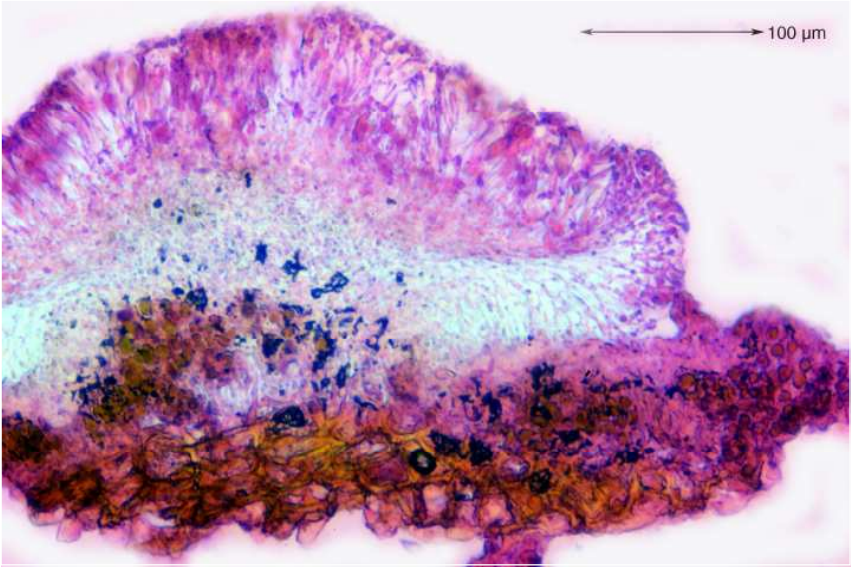
*Bacidia naegelia* (Hepp) Zahlbr.

[= *Lecania naegelia* (Hepp) Diederich & van den Boom]

Sporen hyalin, 2-4 zellig, 8/Ascus, 16,4 x 5,5 µm. Rand ohne AZ. Epithecium 4 µm, teils etwas grünlich; Hymenium 70 µm, J+ blau; Hypothecium hell, 20 µm; Paraphysen oben kopfig, 3,3 µm.

[12546], Germany, Baden-Württemberg, Kreis Göppingen, Bad Überkingen, auf dem Pfad zum Kahlenstein, 48°35.892'N, 9°48.493'E, 675 m, auf Esche beim Höhleneingang des Kahlensteins. Leg. et det. Schumm 02.07.2007





*Bacidia naegeli*