

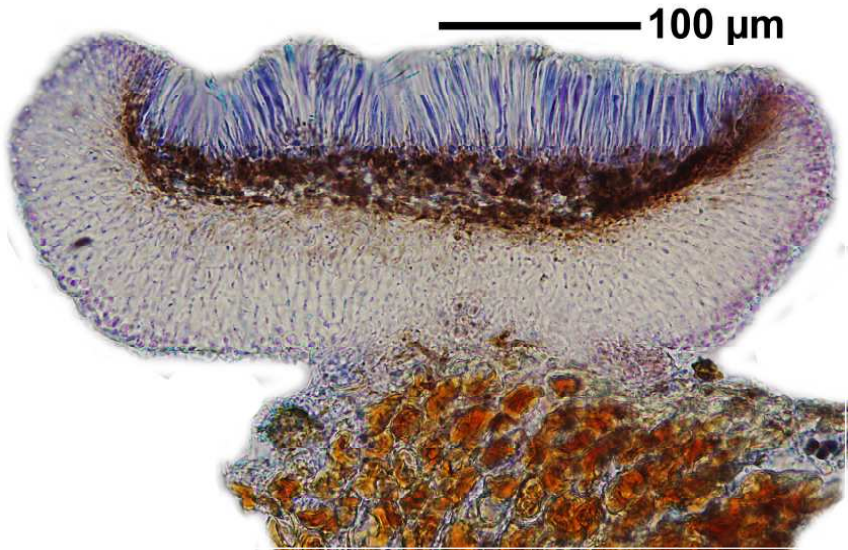
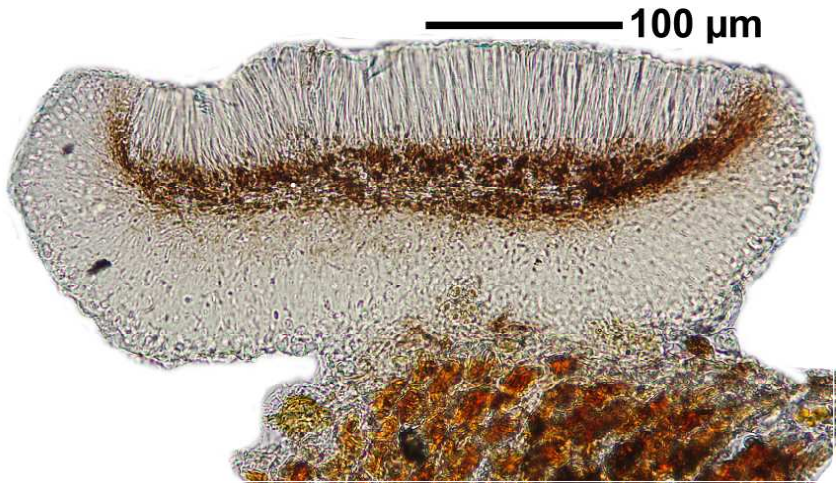
Bacidia sulphurella Samp.

[= *Bacidia arnoldiana* v. *corticola* Arnold]

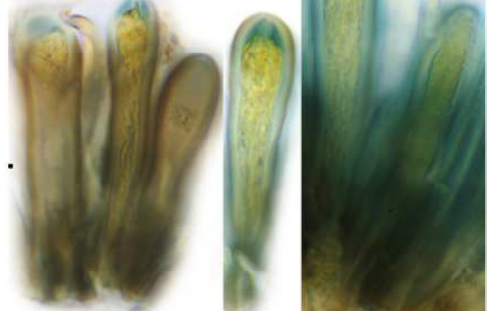
Thallus fein isidiös bis sorediös. Epithecium farblos. Hymenium farblos, 53 μm . Hypothecium braun. Sporen nadelförmig, dünn, Septen extrem dünn (wahrscheinlich mehr als 10), ca. 37 x 1,5 μm .

[16540], Germany, Baden-Württemberg, Schwarzwald-Baar-Kreis, an der Straße von Hornberg nach Schramberg, Abbiegung zum Käppelhof. 48,22853° N, 8,31805° E, 670 m, an *Sorbus*. Leg. et det. Schumm 07.07.2010.

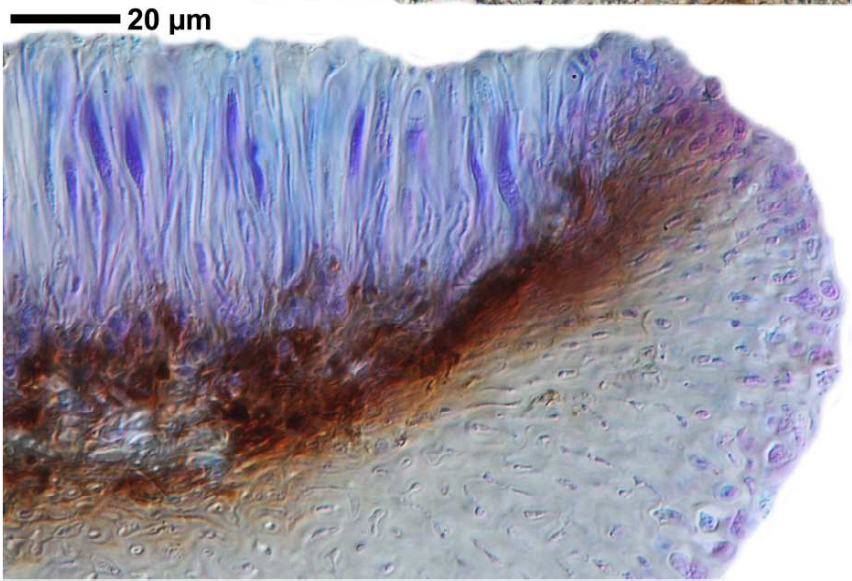




K&J+
10 μm



Bacidia sulphurella Samp.



Bacidia sulphurella Samp.