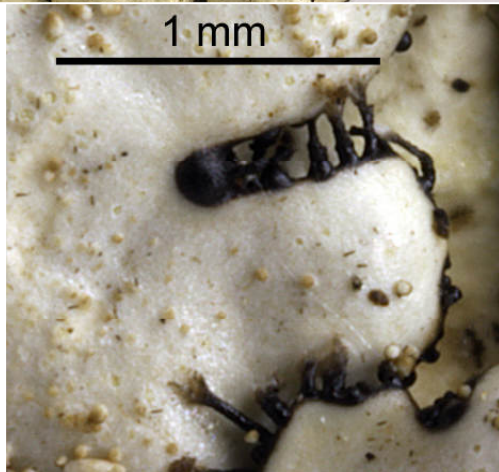
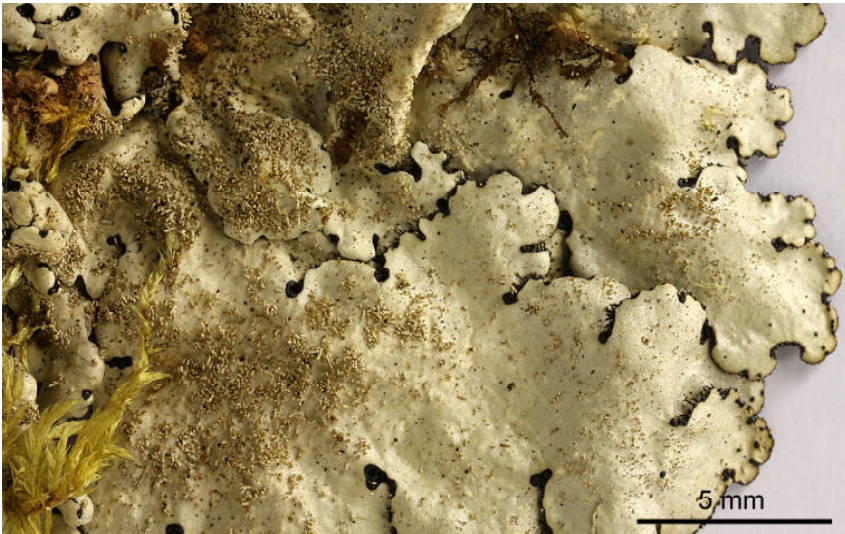
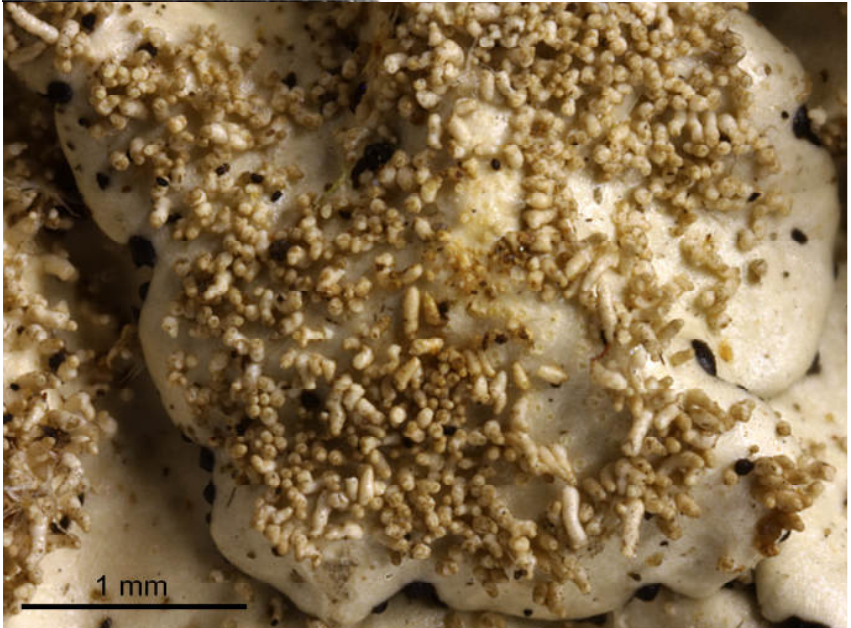
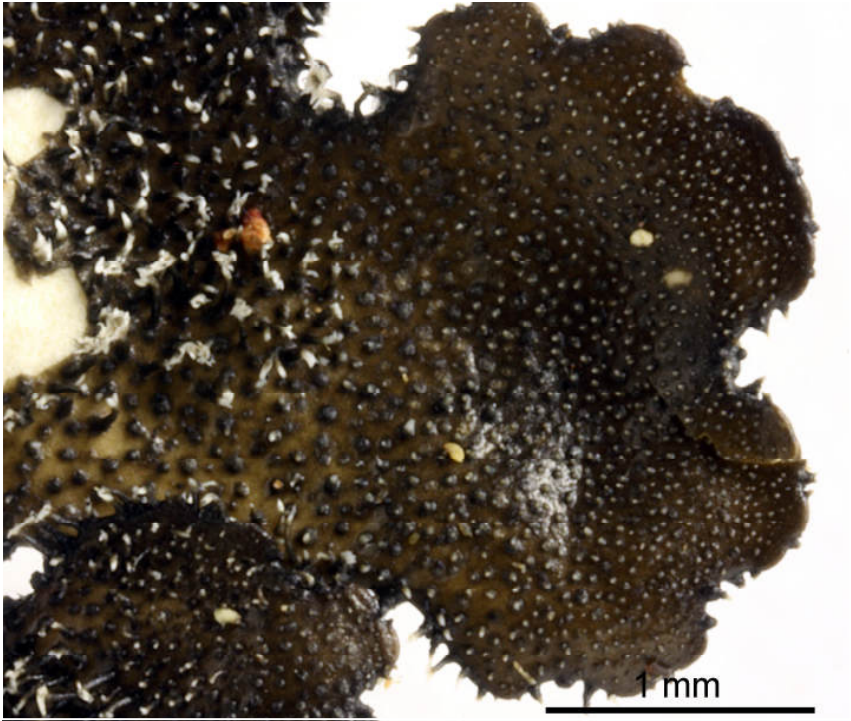


Bulbothrix isidiza (Nyl.) Hale

Thallus with simple, globose, cylindrical or branched isidia. Soralia absent. Lobes 1-4 mm wide. Loer surface pale. Marginal cilia black, with inflated base. Rhizines simple, black. Chemistry: cortex K+ yellow; medulla K+ yellow then red, C-, P+ orange; atranorin (min), chloroatranorin (min), salazinic acid (maj), consalazinic acid (min), secalononic acid A (min), secalononic acid W (min). Corticolous. Pantropical.

[7934], Philippines, Leyte, Prov. Leyte, Lake Kasudsuran (N 11°01.539, E 124°44.931, 740 m) bei Barangay Liberty (Ormoc-City). Leg. Schumm 23.08.2000, det. J.A. Elix 21.11.2000.





Bulbothrix isidiza