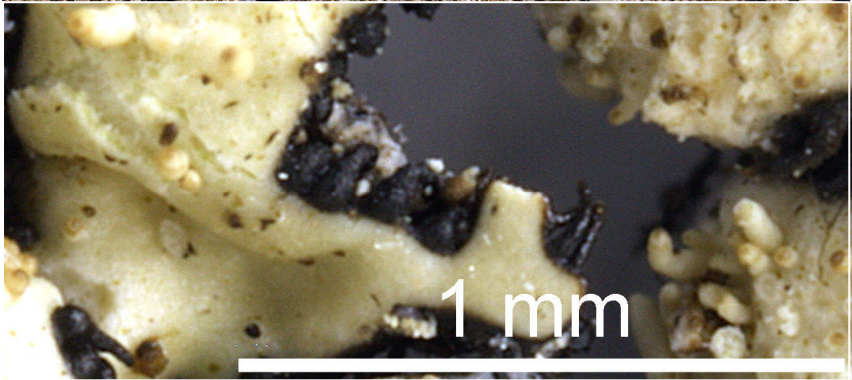
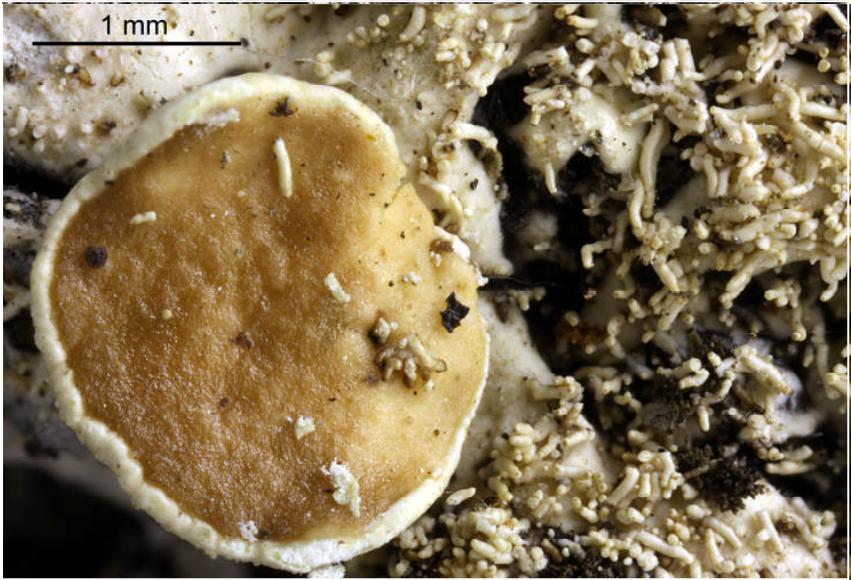
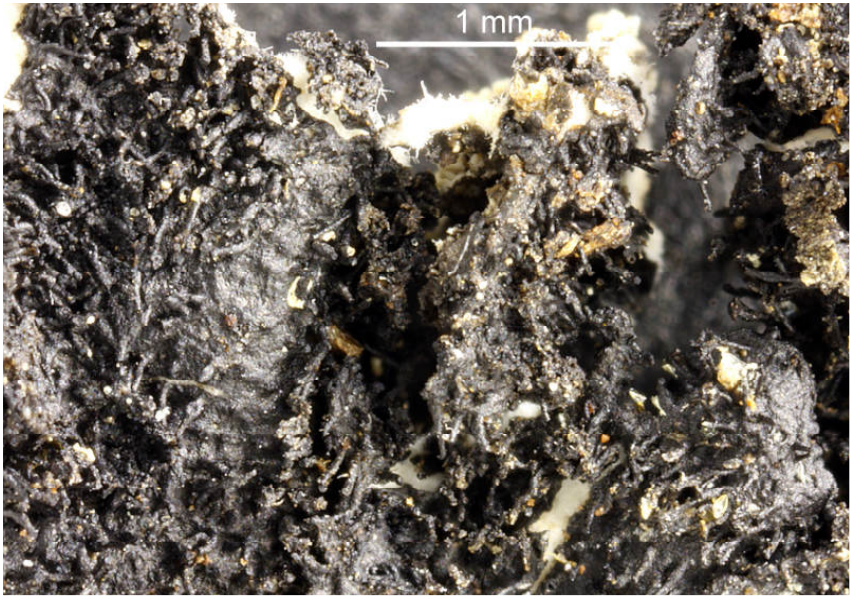


*Bulbothrix tabacina* (Mont. & Bosch) Hale

Lower surface black. Thallus with cylindrical isidia, lobes 1.5-5 mm wide. Chemistry: cortex K+ yellow; medulla K+ yellow then red, C-, P+ orange; atranorin (min), salazinic acid (maj), consalazinic acid (min), norstictic acid (tr). Corticolous, rarely saxicolous. Pantropical.

[7379], Philippines, Negros, Prov. Negros Oriental, beim Mt. Talinis (Cuernos de Negros), Valencia Barangay Lunga, 9°16.676'N, 123°13.839' E, 330-540 m; bei 540 m auf Cocos nucifera. Leg. Schumm 08.08.2000, det. J.A. Elix 13.11.2000.





*Bulbothrix tabacina*