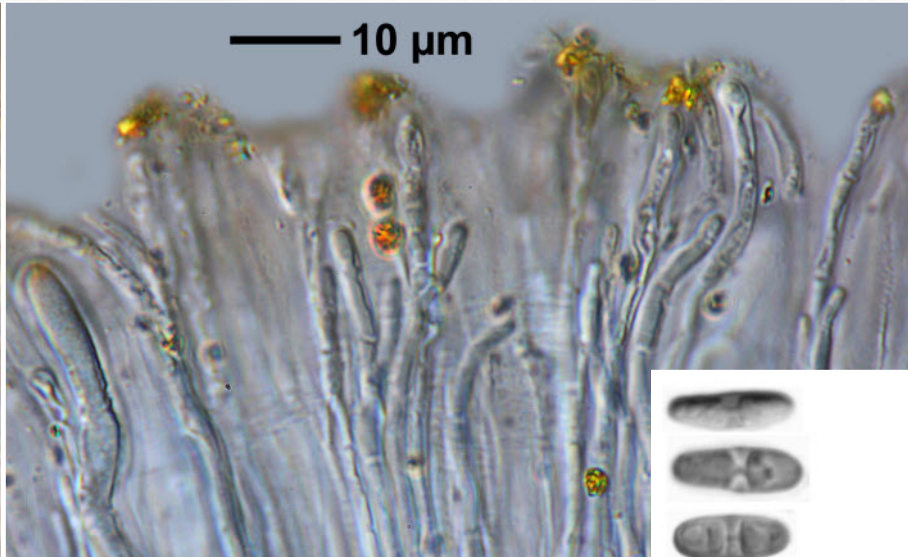
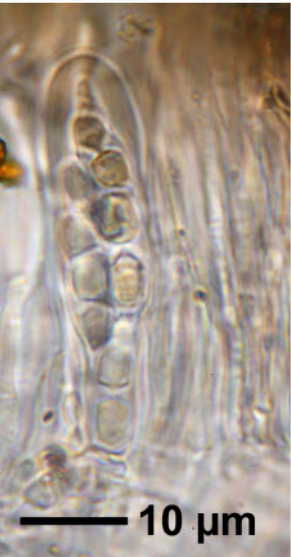
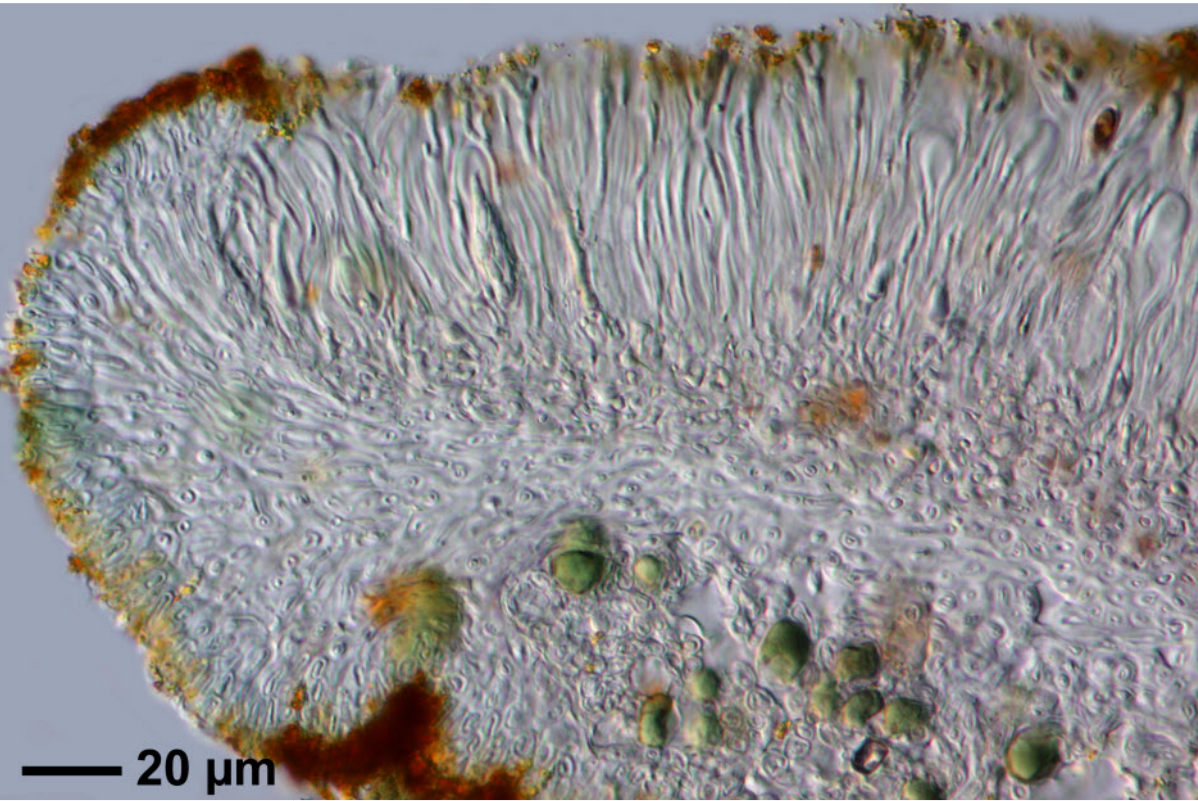
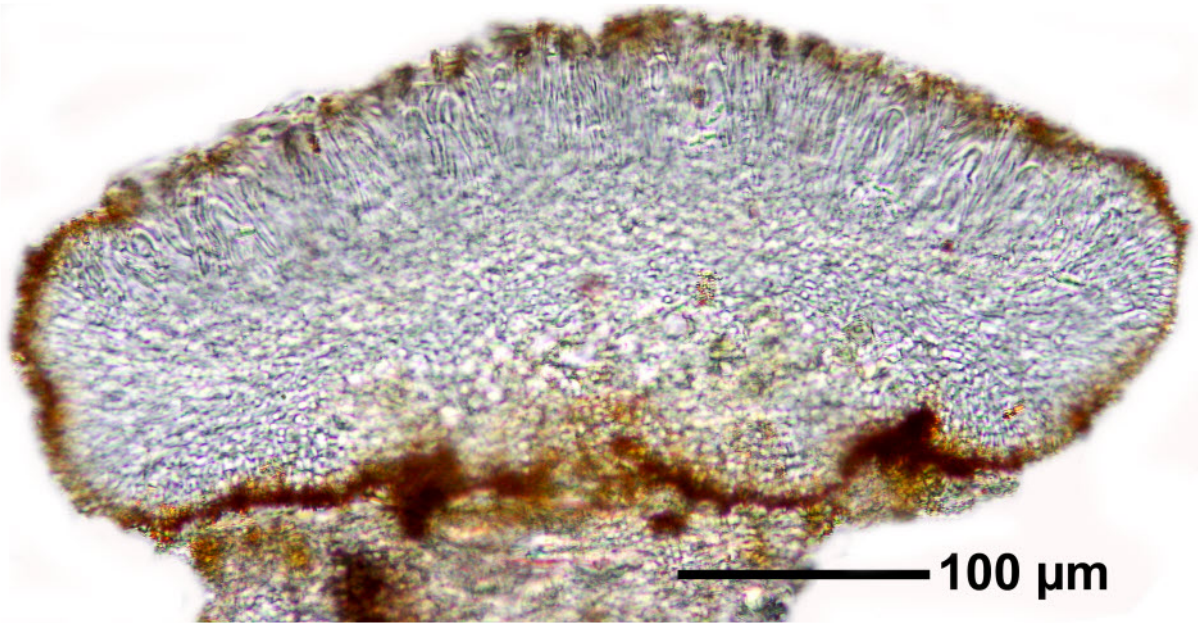


Caloplaca arenaria (Pers.) Müll.Arg.
[= *Rufoplaca arenaria* (Pers.) Arup, Søchting & Frödén]

Thallus unsichtbar, auf Glimmerschiefer. Sporen 8/Ascus, schmal, 13-14 x 4-5 μm , Septum 1-2 μm . Hymenium 88 μm .

[5568], Schweiz, Wallis, südwestlich des Simplonpasses, 2370 m.





Caloplaca arenaria