

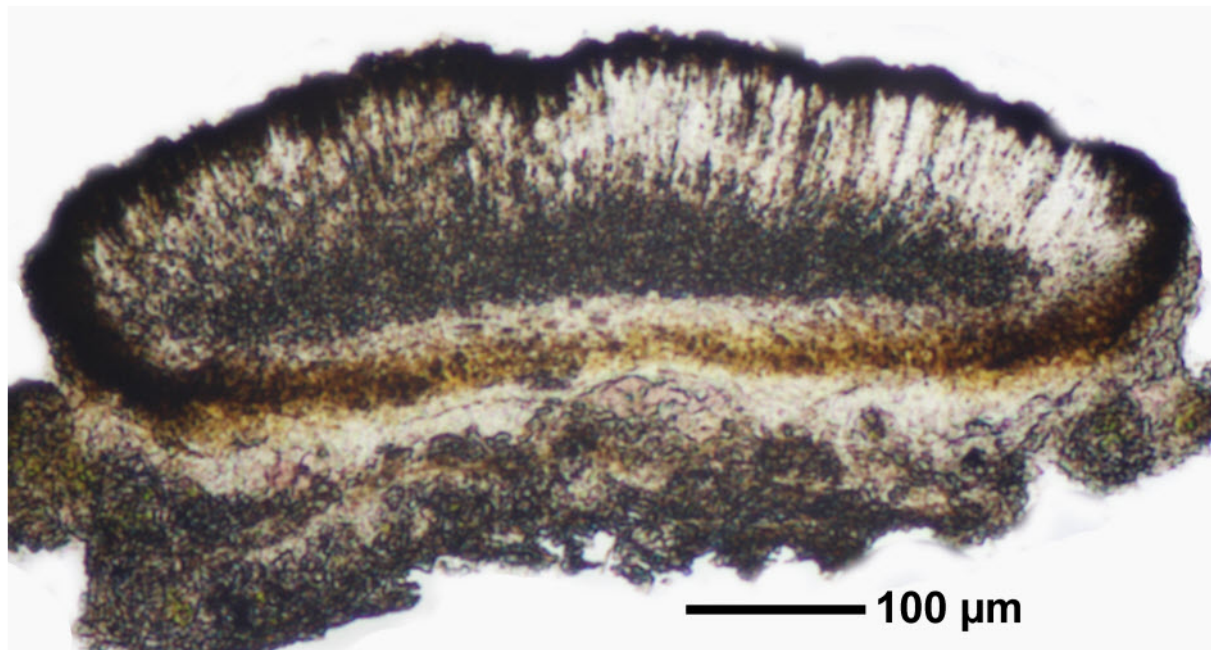
*Caloplaca bassiae* (Ach.) Zahlbr.

[= *Caloplaca isidiosella* (Cromb.) Sant.]

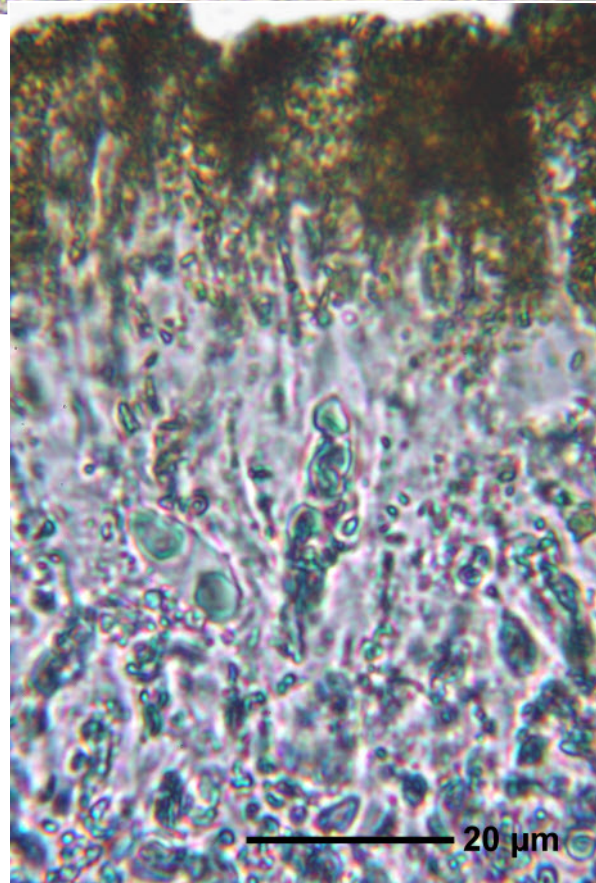
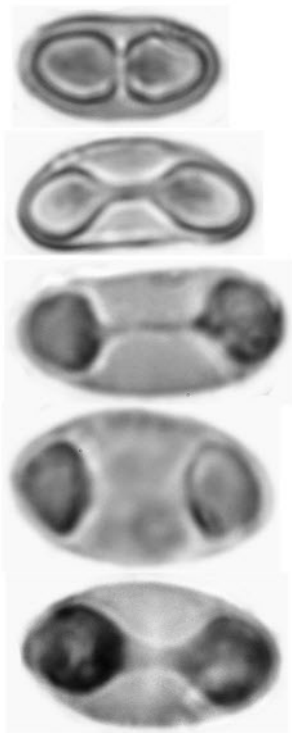
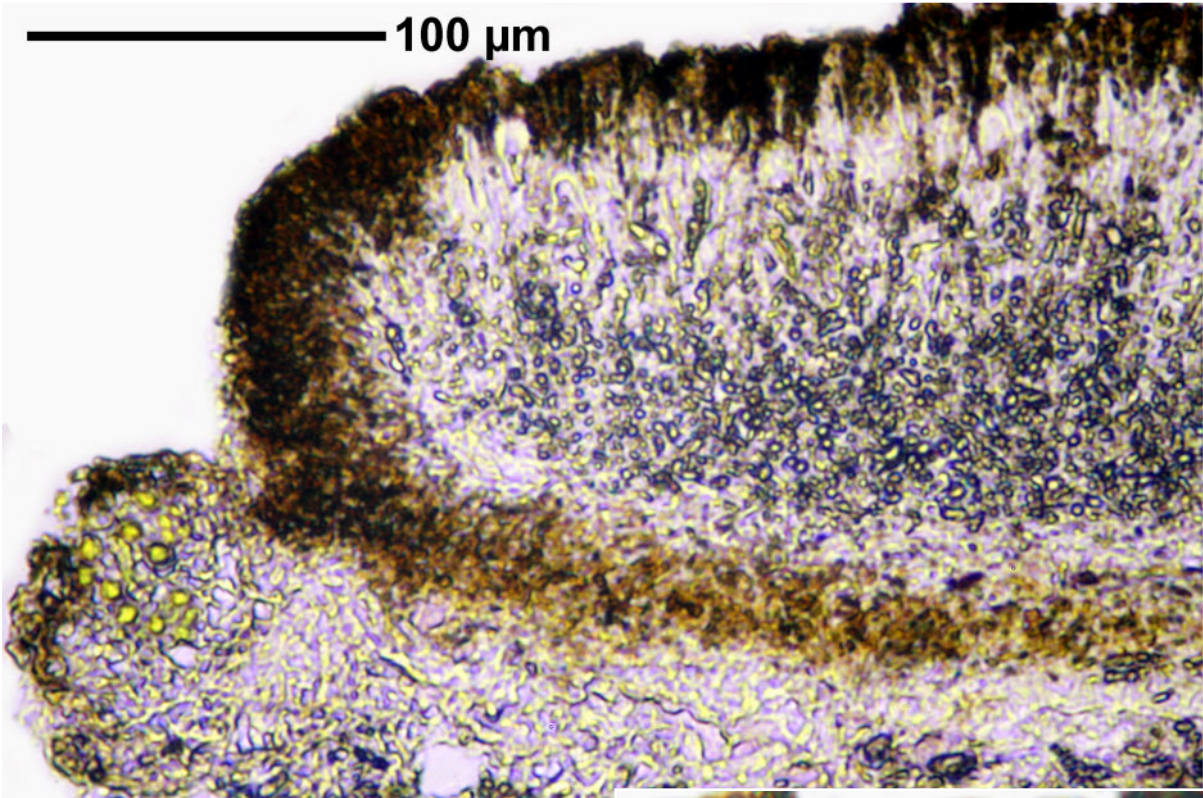
[= *Caloplaca malaënsis* (Räs.) D.D.Awasthi]

Thallus greenish to yellowish. Isidia cylindrical, at least partly yellow-orange. Apothecia rare, orange (darker than the Isidia), without algae in the apothecia. Corticolous. Pantropical. Lit. Wetmore (2004).

[14615], Seychelles, Mahe, Westspitze, Anse Jasmin Estate (Hotel Auberge des Seychelles), 4°38.648' S, 55°23.111' E, ca. 20 m. Leg. Schumm & Frahm 08.10.2008, det. A. Aptroot 2008.







*Caloplaca bassiae*