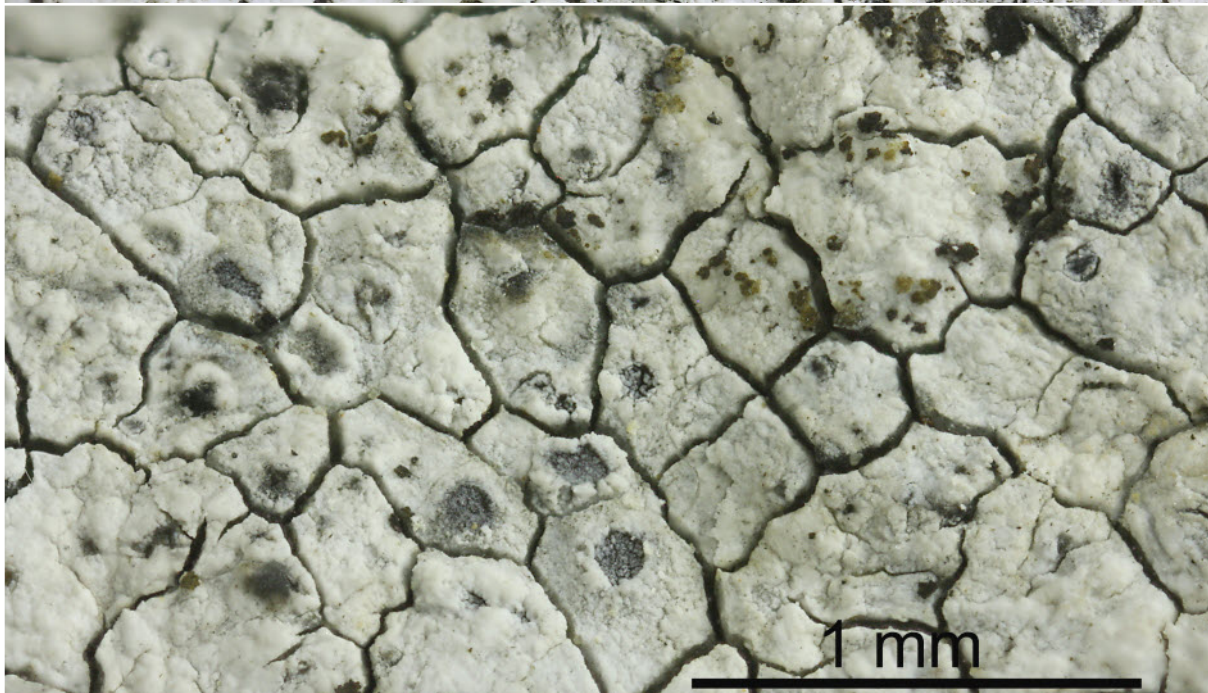
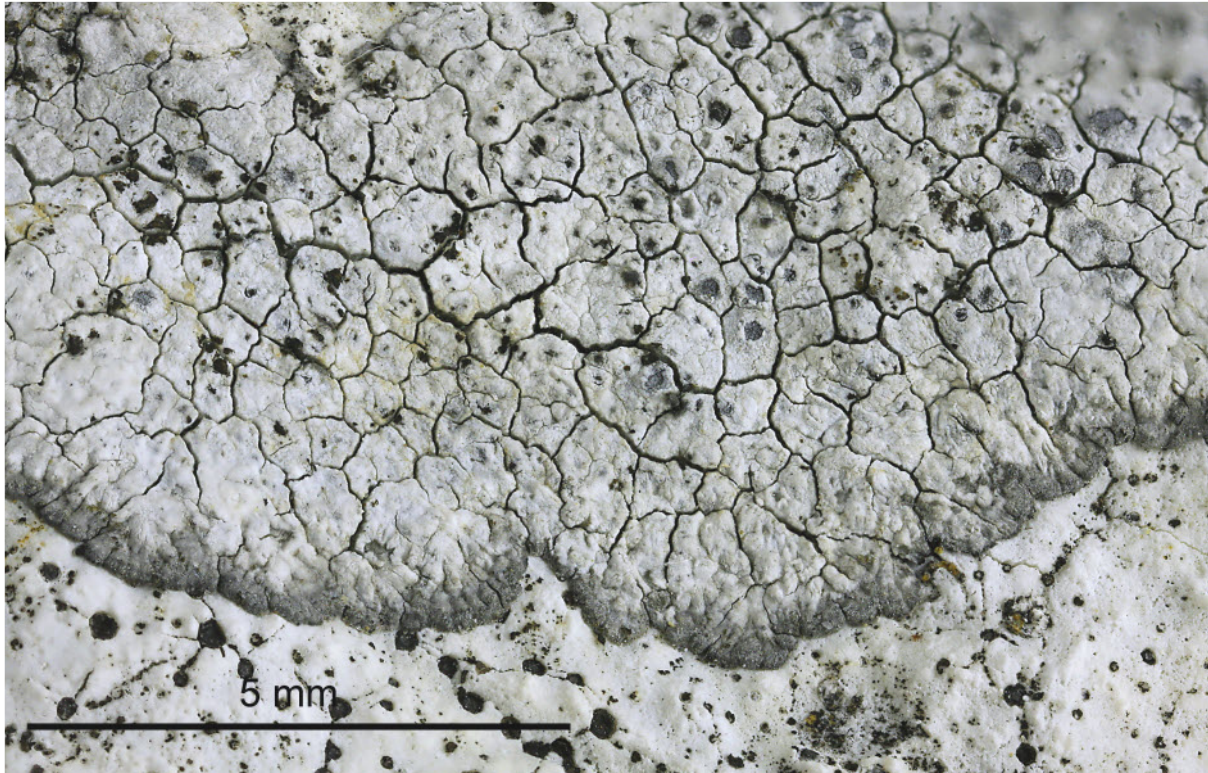
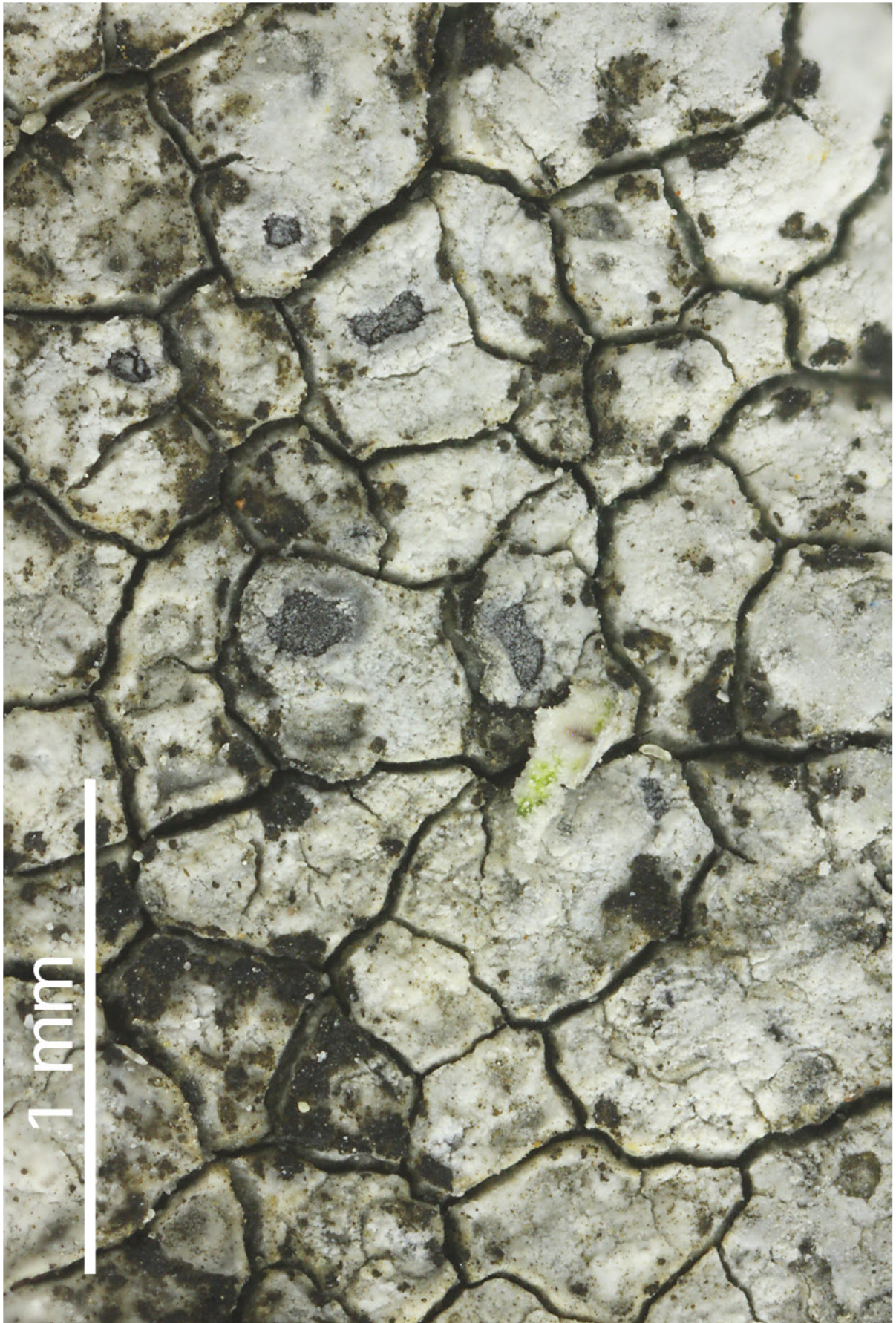


*Caloplaca chalybaea* (Fr.) Müll.Arg.

Sporen hyalin, polar-2-zellig, elliptisch, Septum ca. 1/3 der Sporenlänge, 11-12 x 6-7  $\mu\text{m}$ . Aspiciliaartiges Aussehen durch die eingesenkten Apothecien.

[17256], Germany, Baden-Württemberg, Schwäbische Alb, Kreis Heidenheim, 0.7 km östlich von Dunstelkingen, sonnige Kalkfelsen, 48.718657° N, 10.426030° E, 530 m. Leg. et det. Schumm, 13.05.2011.





*Caloplaca chalybaea*