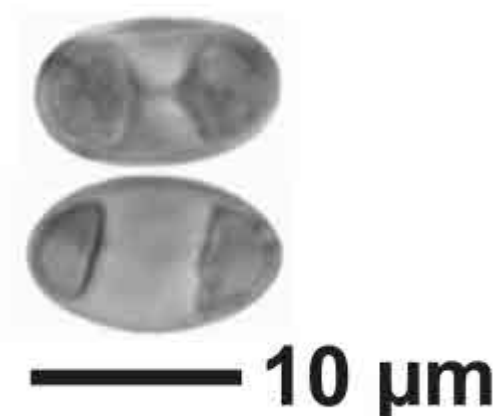
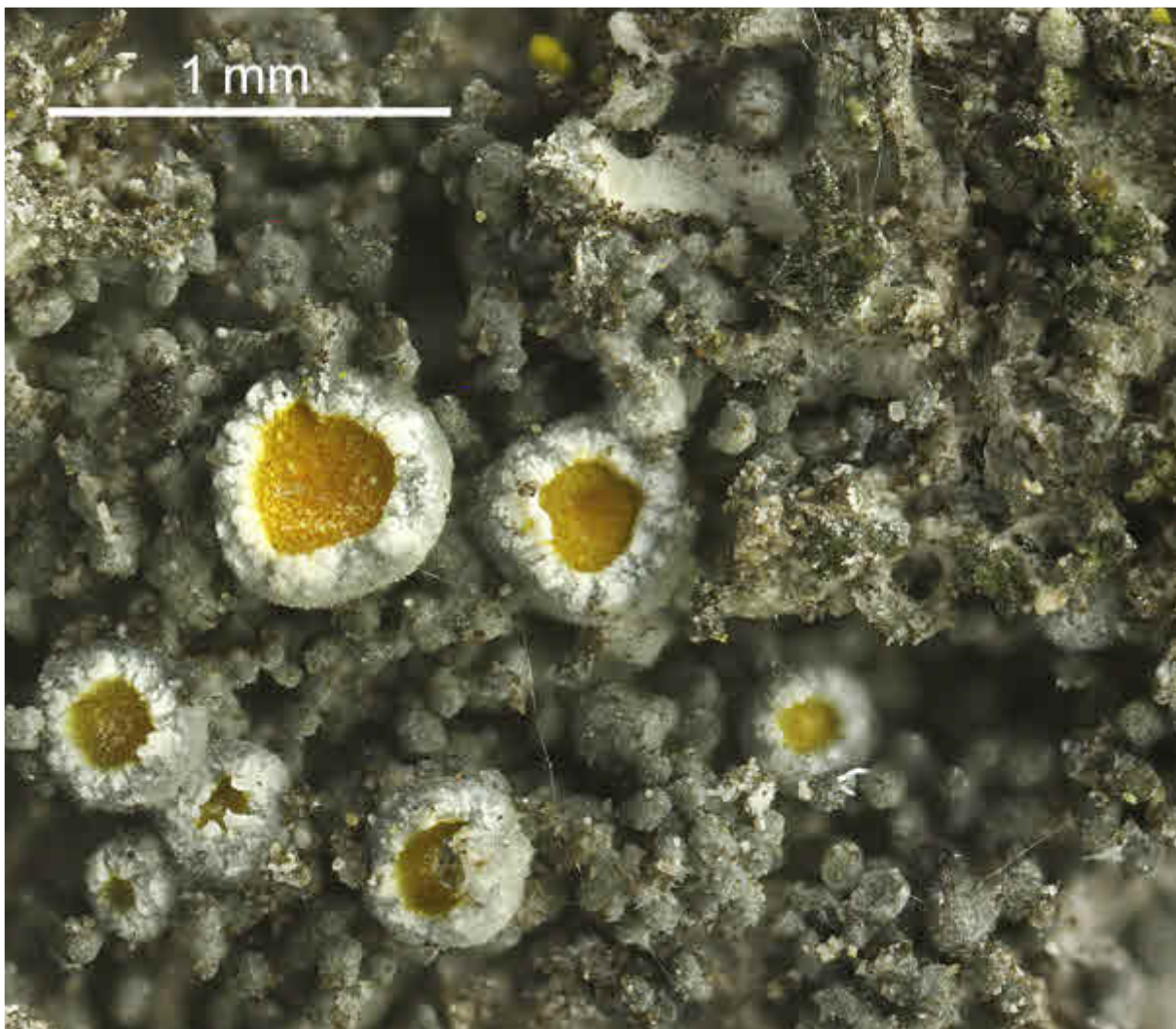
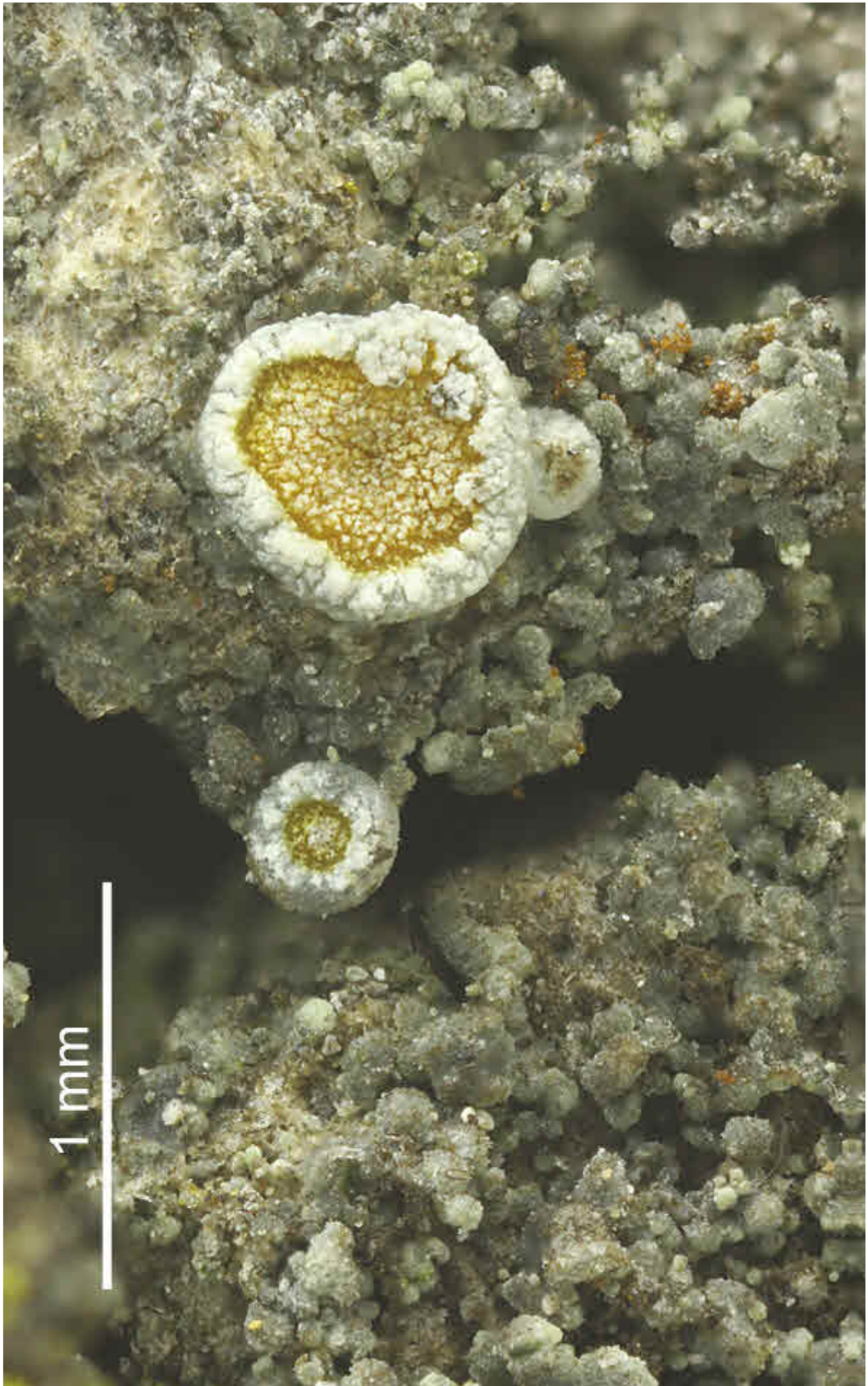


*Caloplaca chlorina* (Flot.) H.Olivier

Apothecien mit grauweißem Thallusrand, Scheibe gelb (K+ karminrot). Sporen polar-2-zellig, ca. 12 x 6 µm, 8/Ascus. Thallus grau, (K+ schwach violett), warzig bis isidiös, blastidiös.

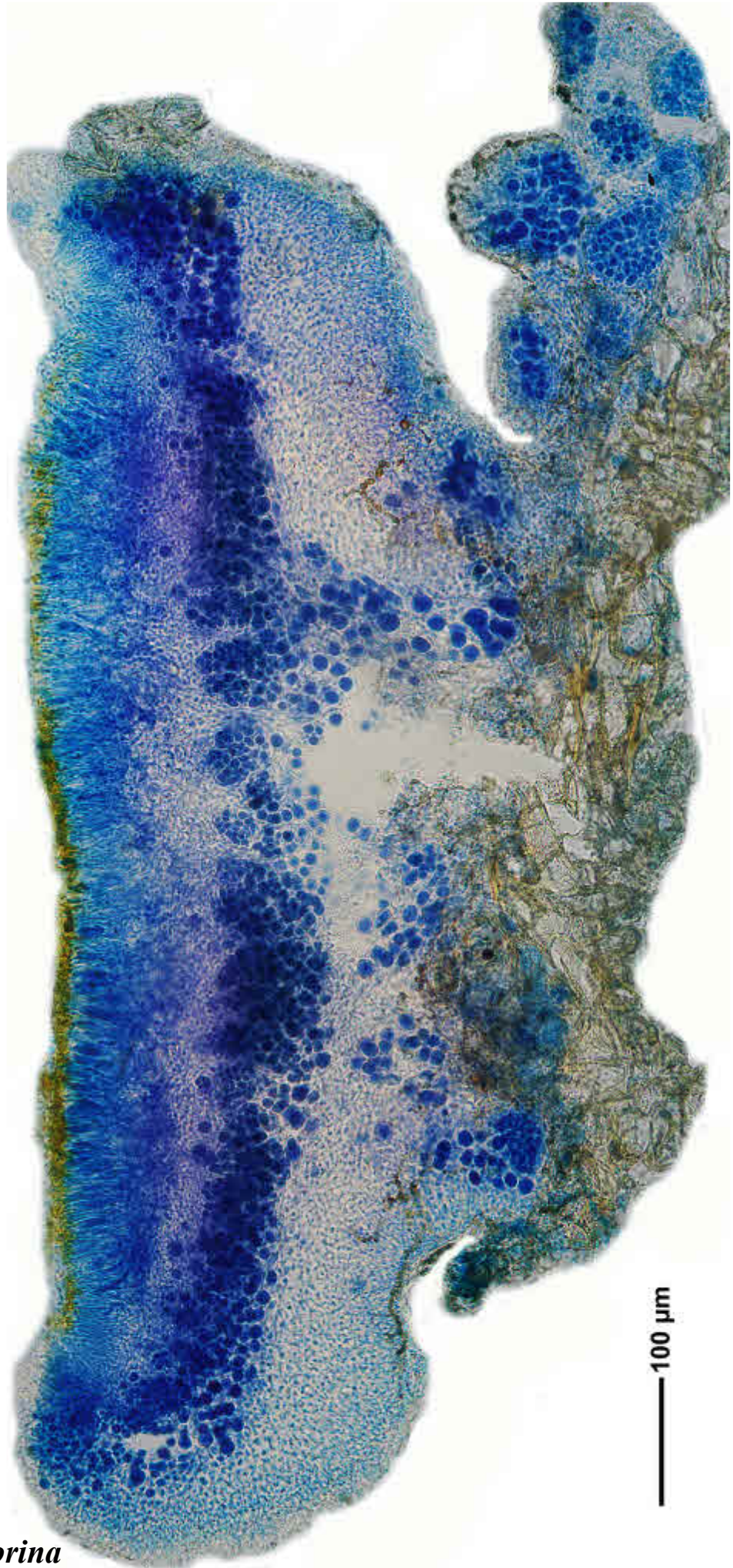
[17088], Germany, Baden-Württemberg, Kreis Göppingen, an Linden im Klosterhof des Klosters Adelberg, 48,75872° N, 0,59839° E, 460 m. Leg. Schumm 05.03.2011, det.Aptroot 2011.





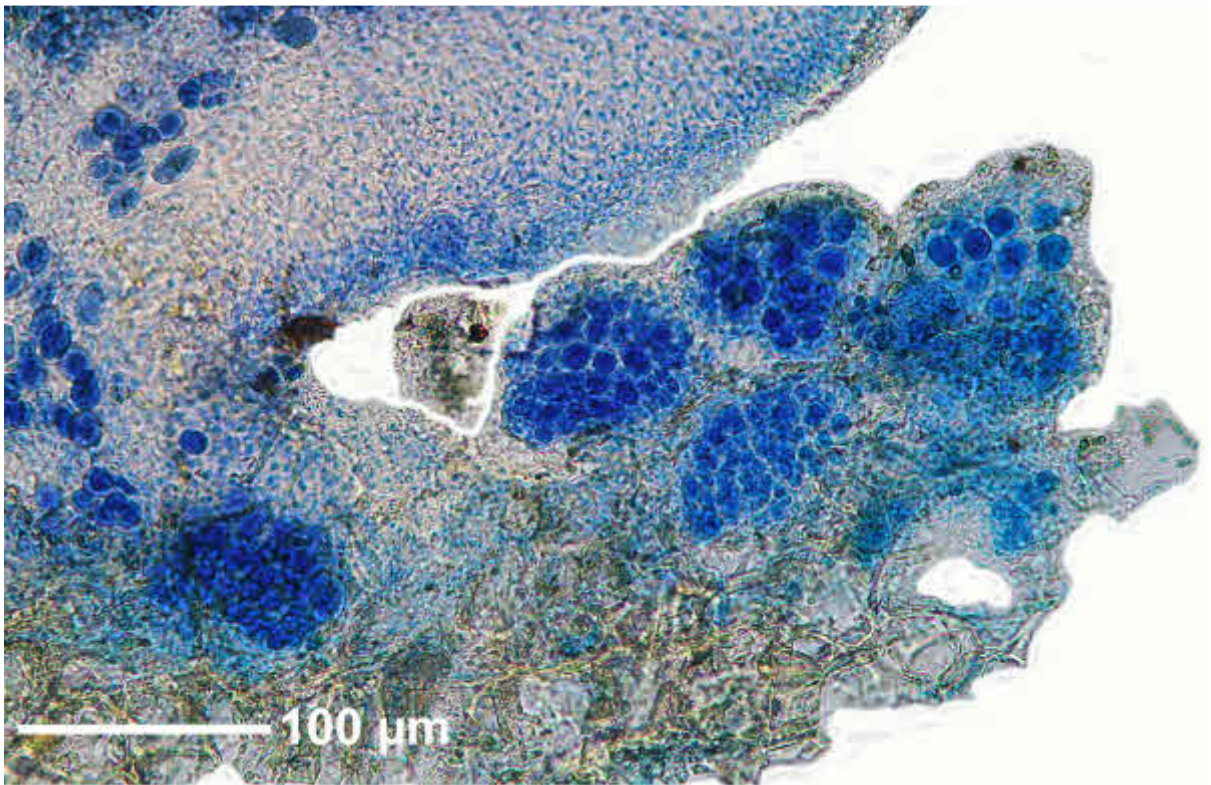
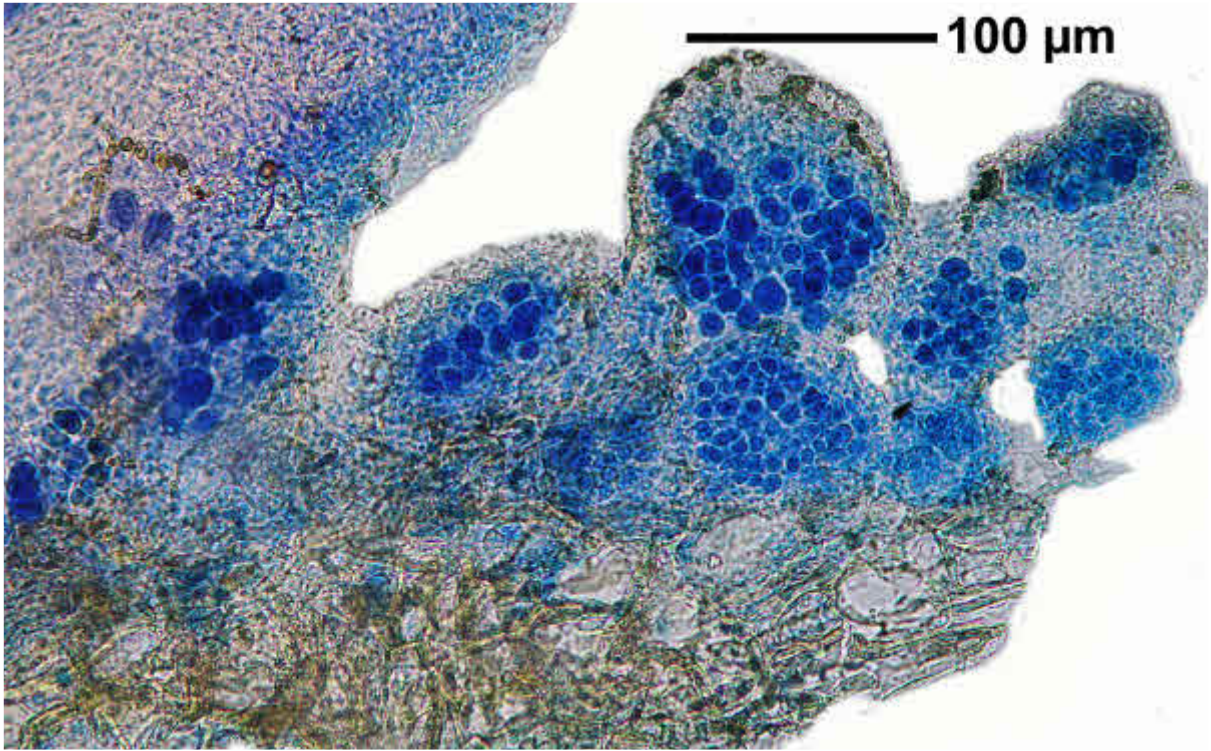
*Caloplaca chlorina*





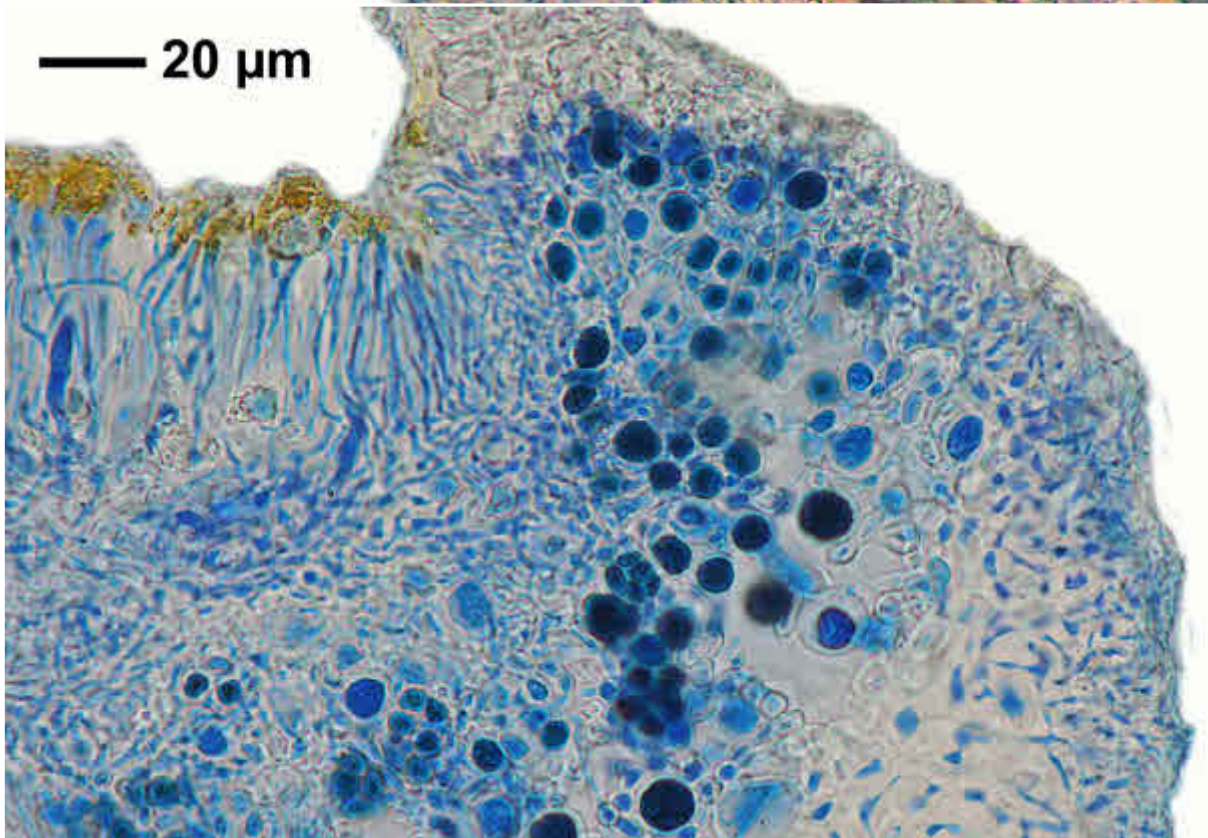
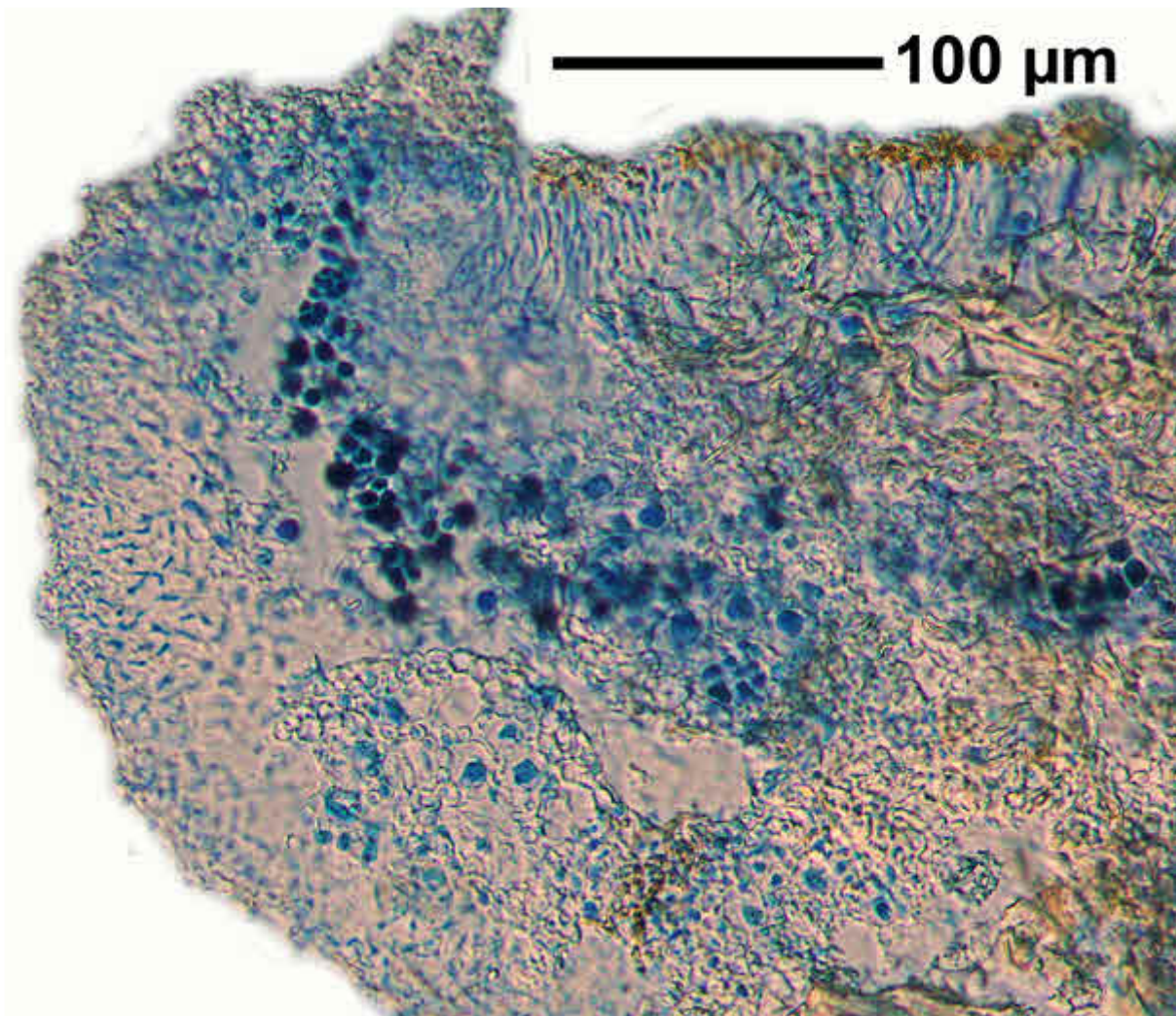
*Caloplaca chlorina*





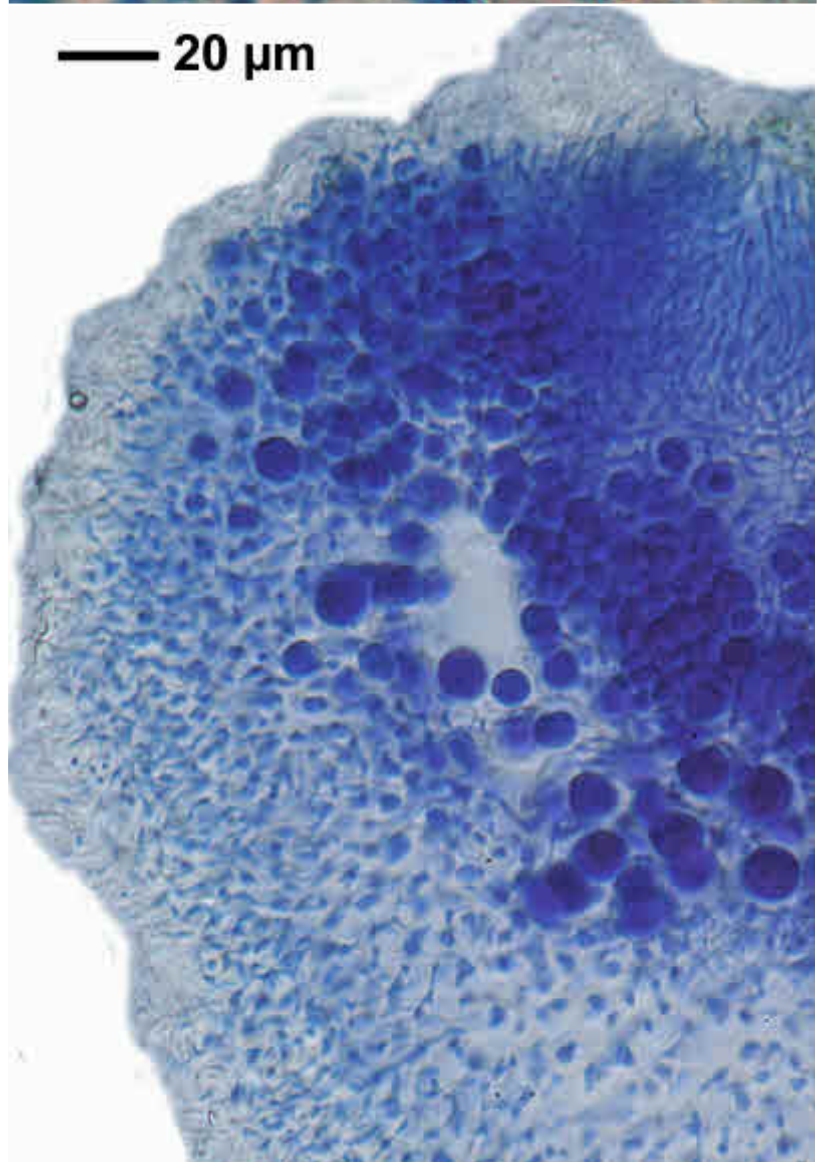
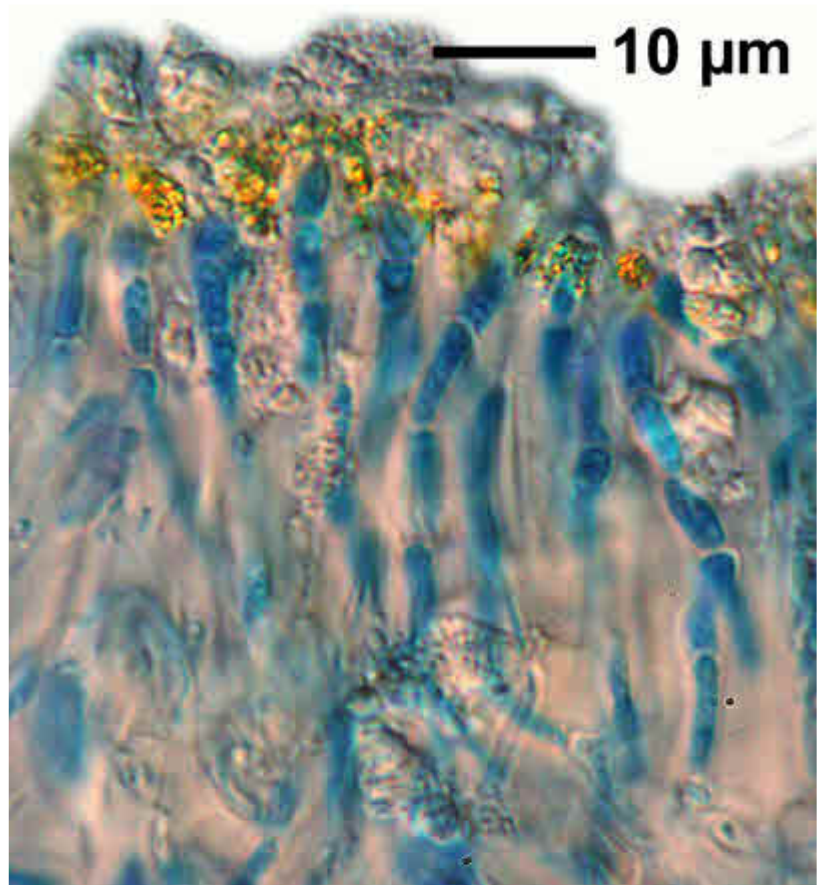
*Caloplaca chlorina*





*Caloplaca chlorina*





*Caloplaca chlorina*