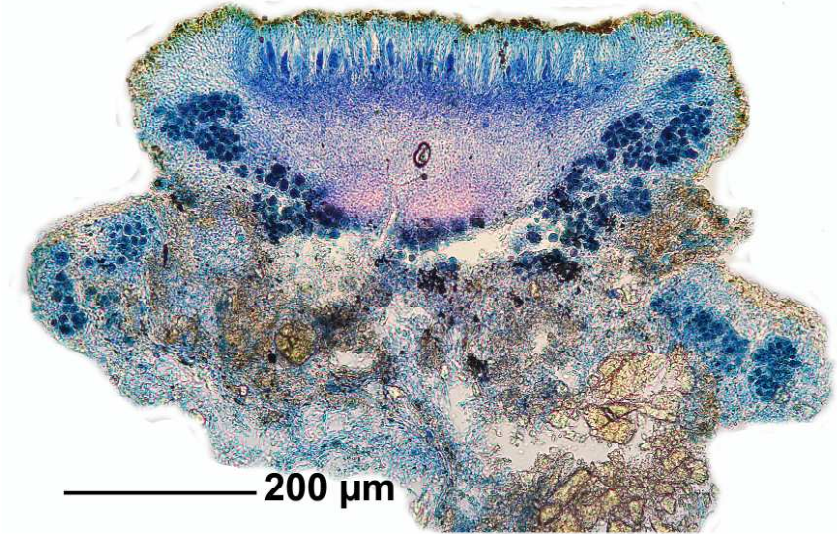
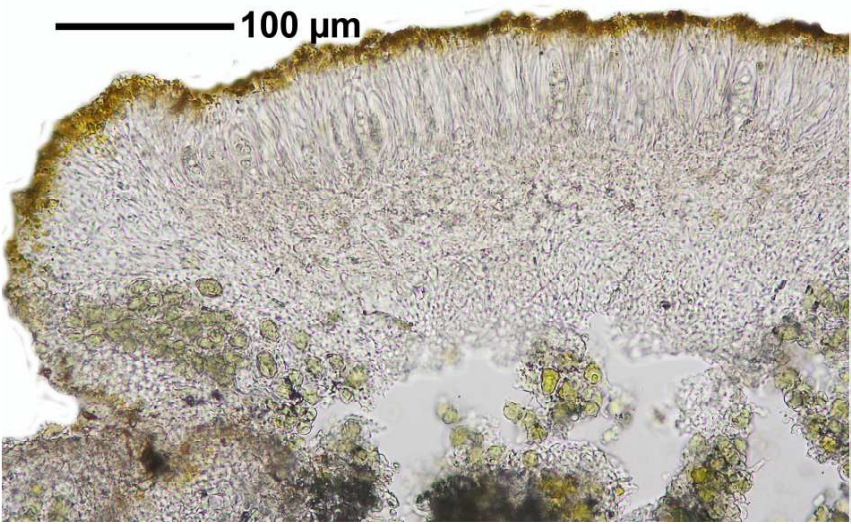


Caloplaca dalmatica (A.Massal.) H.Olivier

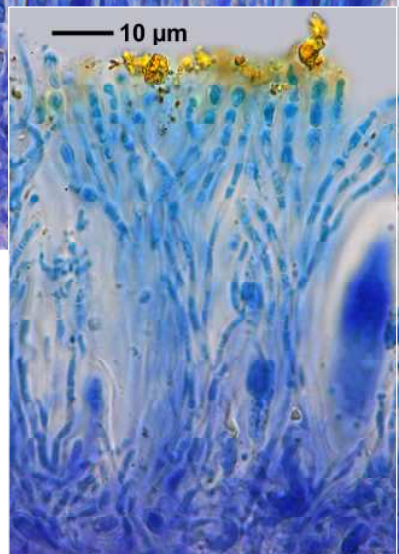
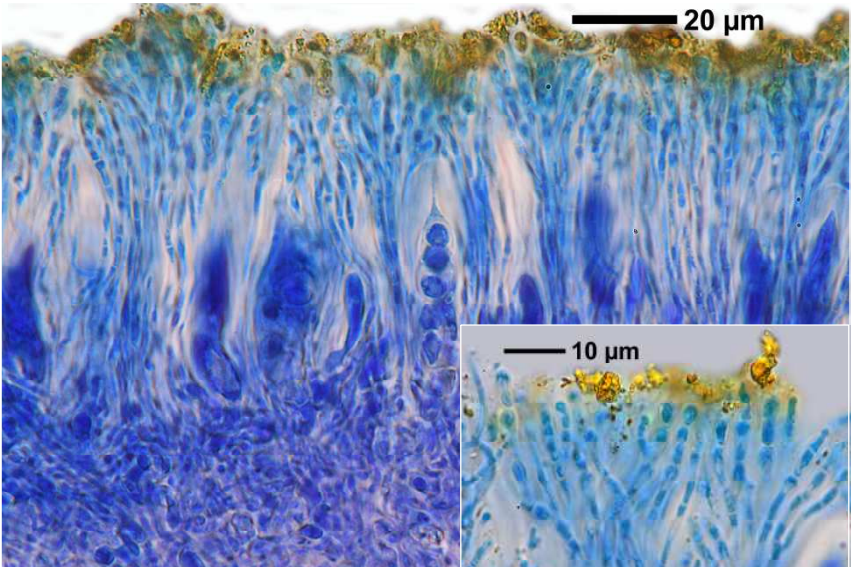
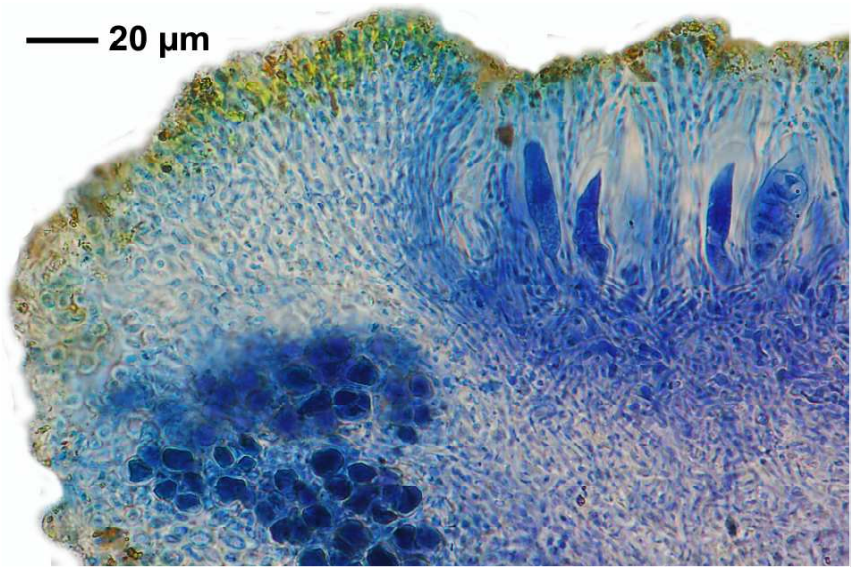
Sporen 10-15 x (6,5-)7(-11) μm , Septum/Sporenlänge = (0,2-) 0,3 – 0,4. Sporen kleiner als bei *Caloplaca flavovirescens*.

[4421], Germany, Baden-Württemberg, Rems-Murr-Kreis, Schorndorf, Eichenbachhang mit Viehweide, sonnige warme Streuobstwiesen, ca. 340 m, an kalkhaltigen Sandsteinmauern. Leg. Schumm 25.03.1990, det. A. Aptroot 2011.

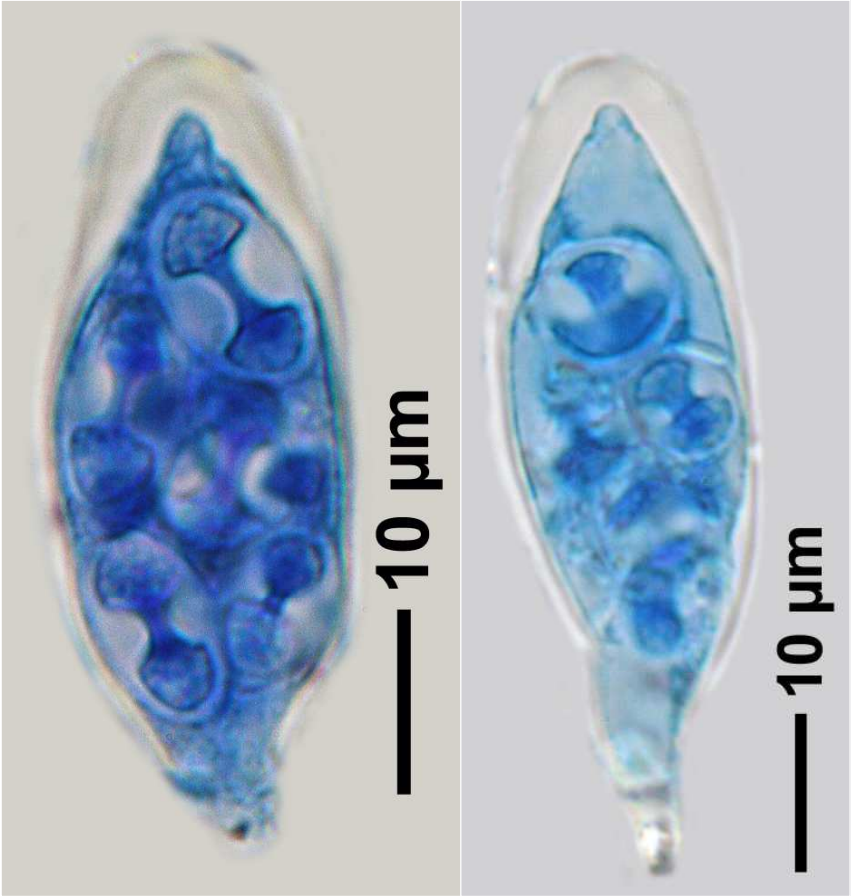




Caloplaca dalmatica



Caloplaca dalmatica



Caloplaca dalmatica