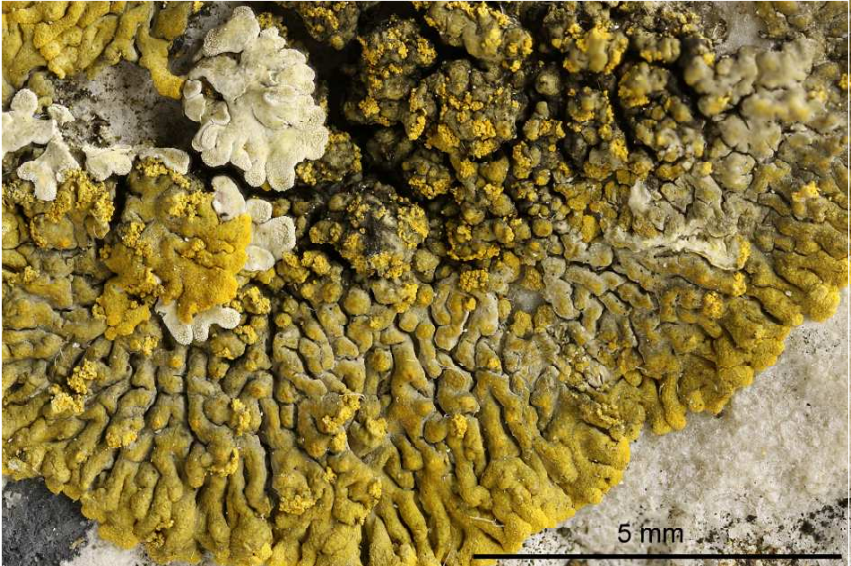
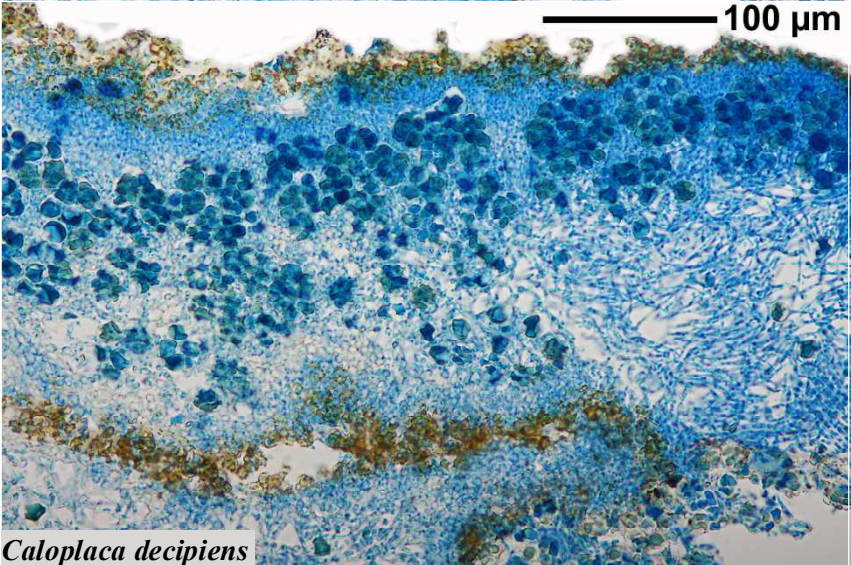
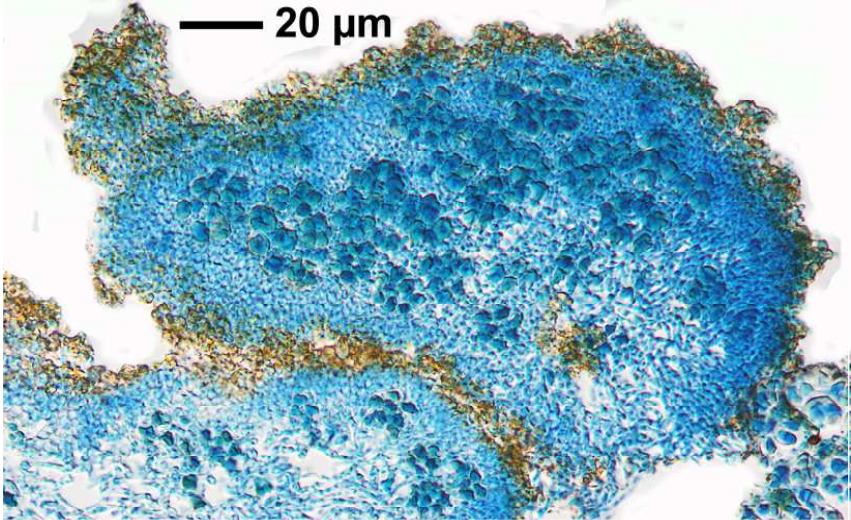
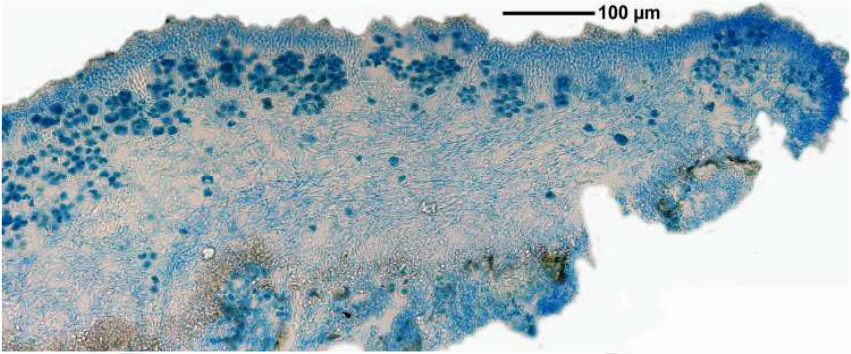


Caloplaca decipiens (Arnold) Blomb. & Forss.

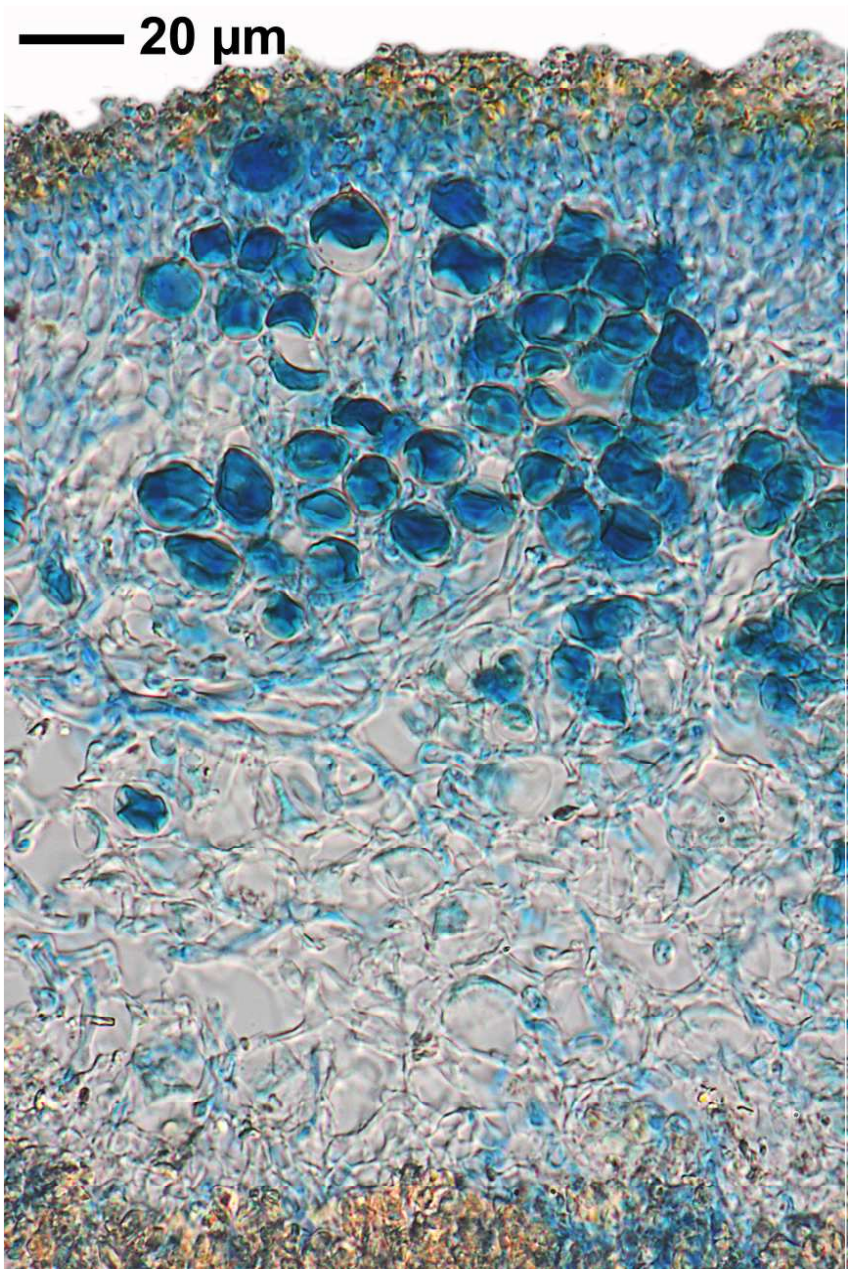
Thallus am Rand gelappt. Endlappen bis 1 mm breit, oft bereift. Mit Kopf- und Lippensoralen. Th. K+ rot. Apothecien selten. Sporen hyalin, polar-2-zellig, 8/Ascus, 10-15 x 5-8 μm , Septum 1/4-1/3 der Sporenlänge.

[149], Germany, Baden-Württemberg, Kreis Göppingen, Hohenstaufen, Spielburg, ca. 570 m, an südexponierten Kalkfelsen. Leg. et det.

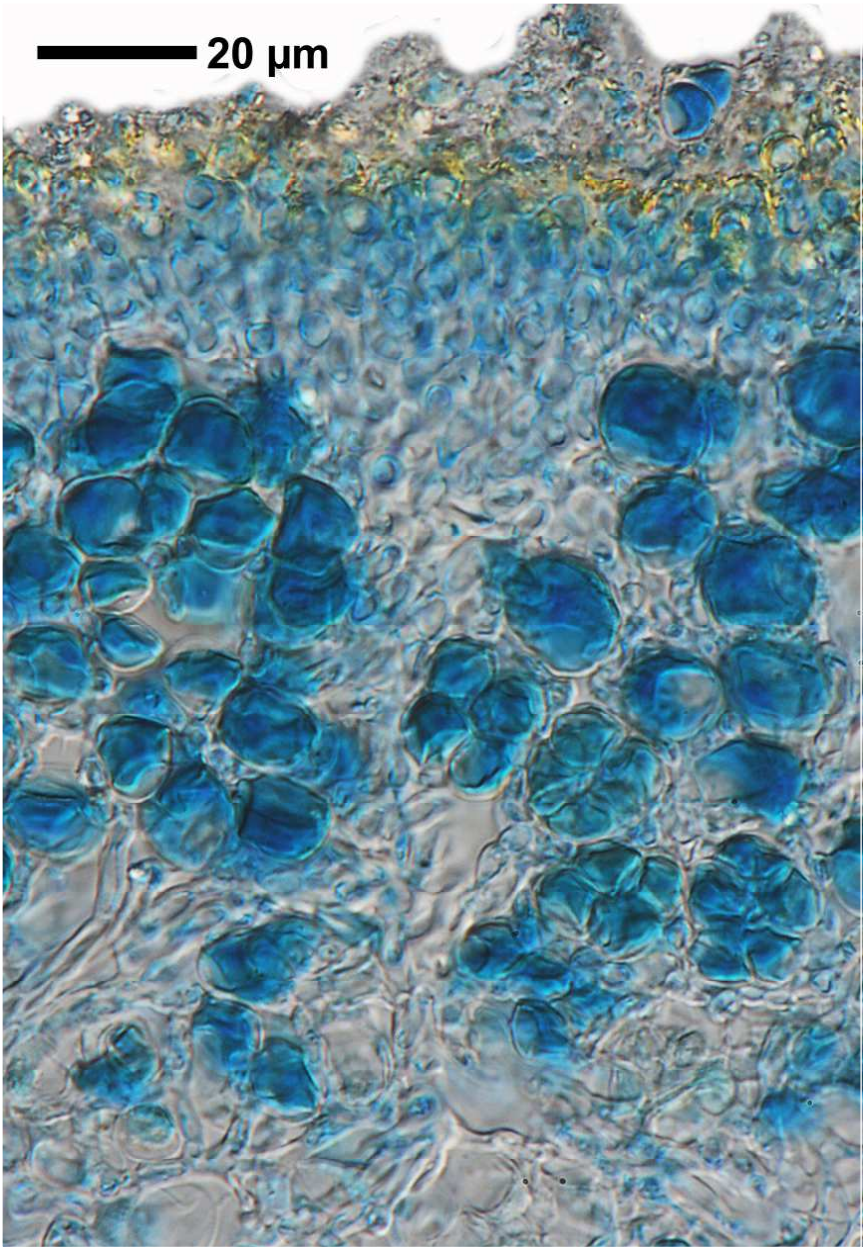




Caloplaca decipiens



Caloplaca decipiens



Caloplaca decipiens