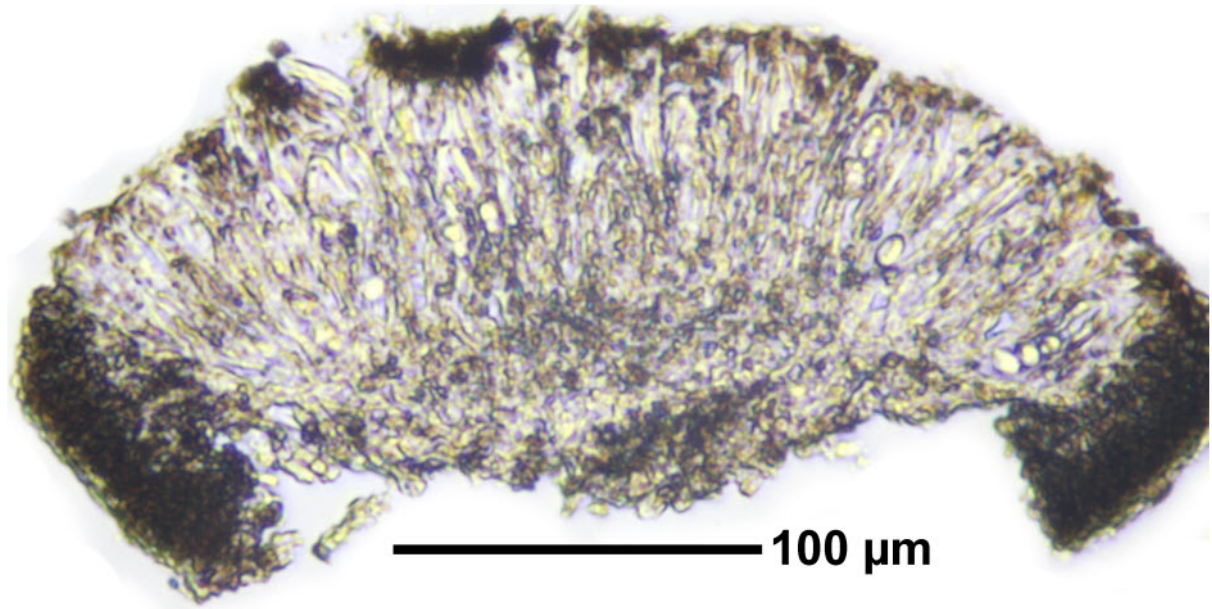
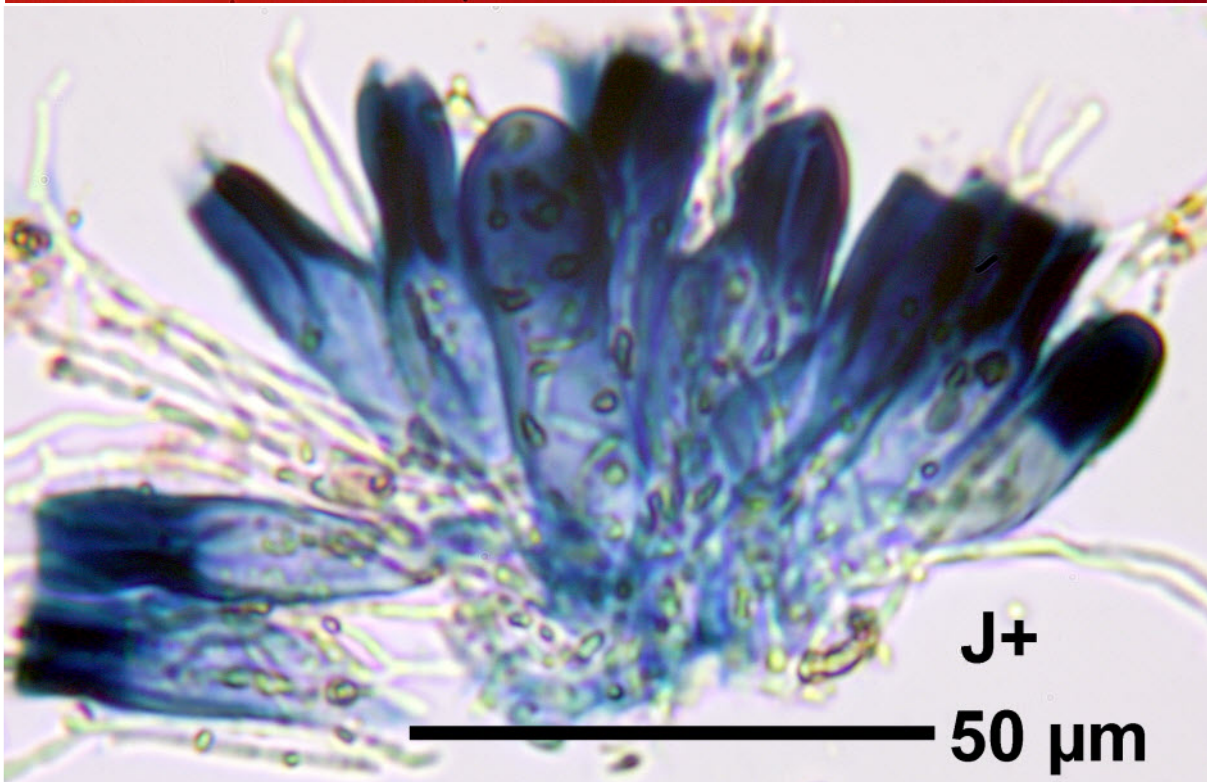
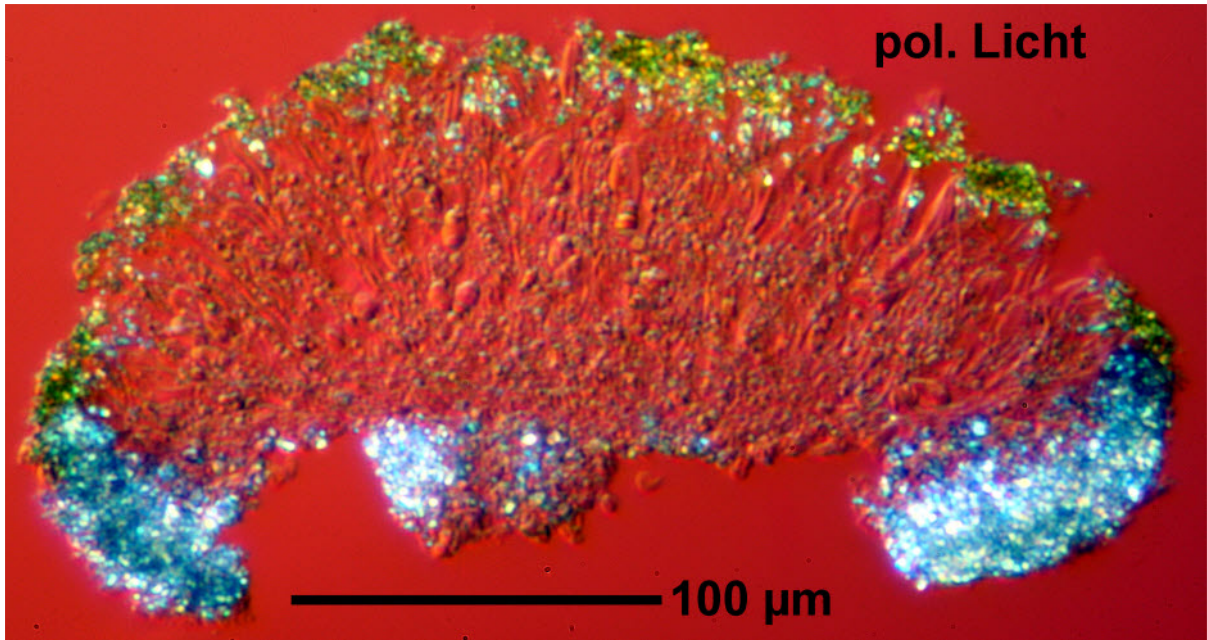


Caloplaca leptozona (Nyl.) Zahlbr.

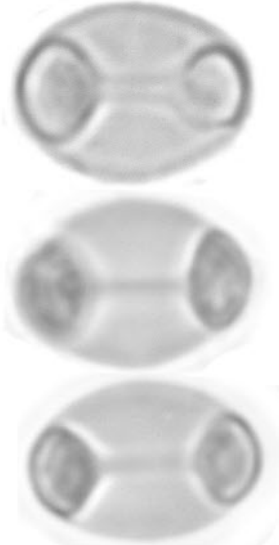
Apothecia not always present. Spores hyaline, 1-septate, 10-12 x 5-7 μm , septum c. 4 μm . Margins of the apothecia with many crystals, without photobionts. Hymenium c. 80-90 μm high. Thallus K⁺red, with or without soredia. Palaeotropical.

[14468], Seychelles, Praslin, zwischen St. Maries Point und Anse Lazio, ca. 4°18.288' S, 55°41.388' E, ca. 0-250 m. Leg. Schumm & Frahm 01.10.2008, det. A. Aptroot 2008.

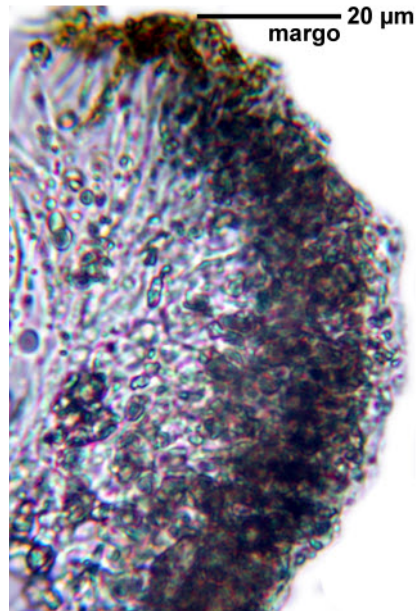




10 μm



20 μm



Caloplaca leptozona