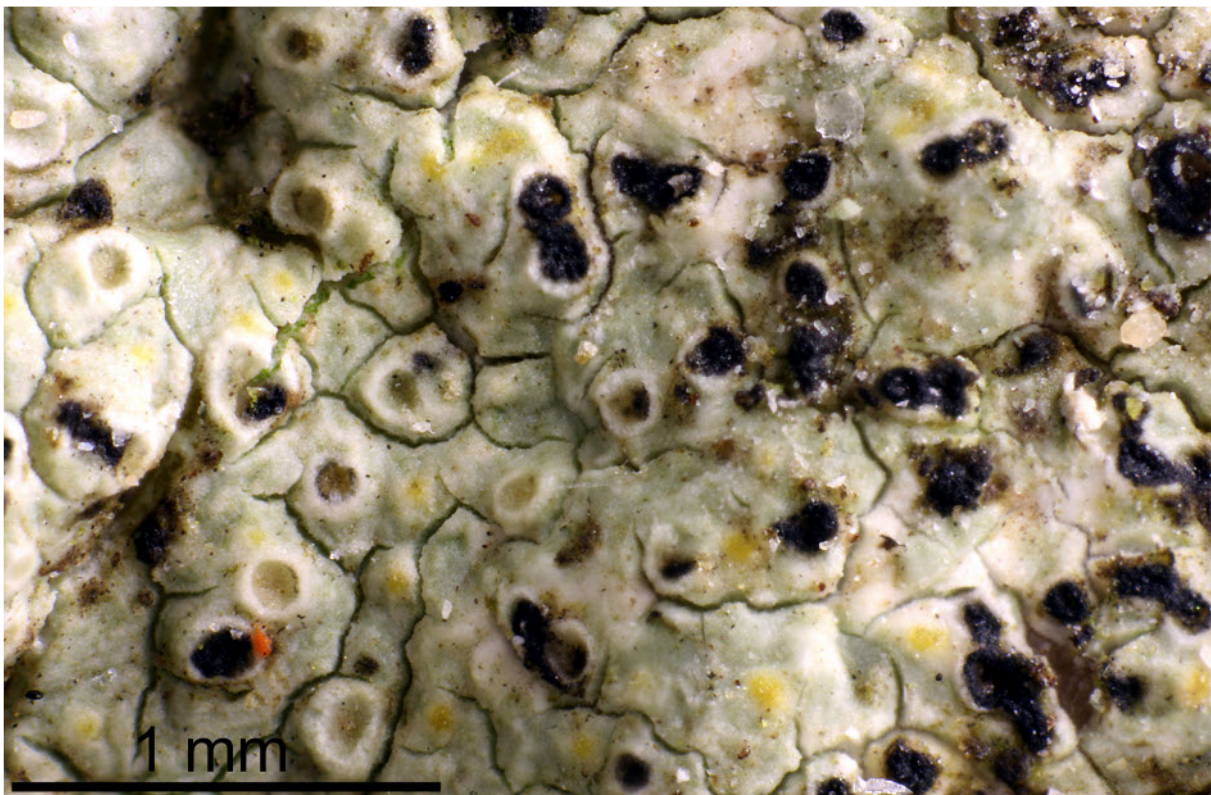


Caloplaca leptozona (Nyl.) Zahlbr.

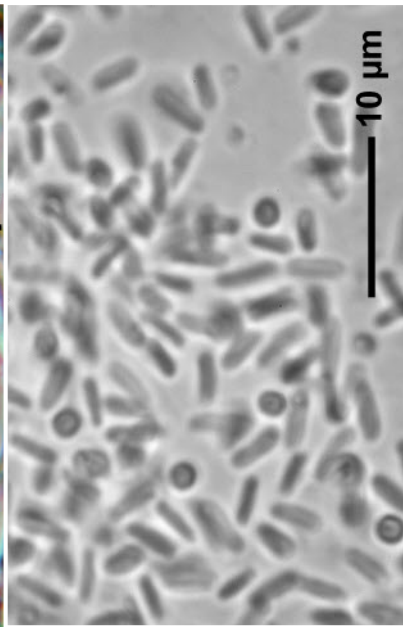
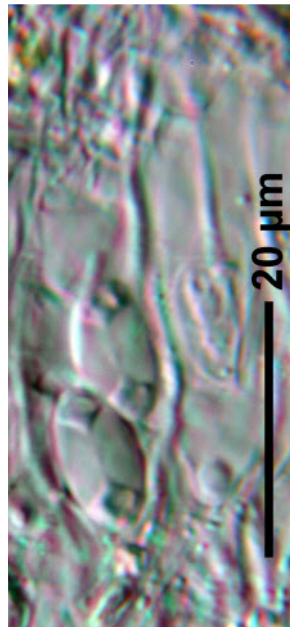
Specimen with lichenicolous fungus. Spores brown, 13-16 x 4.4-8.7 μm .
Caloplaca: Sporen polar-2-zellig, 10-11 x 6-7 μm , Paraphysen verzweigt, Ap. teils eingesenkt, Pykniden K+ rot, Pyknosporen 3,3 x 1,1 μm .

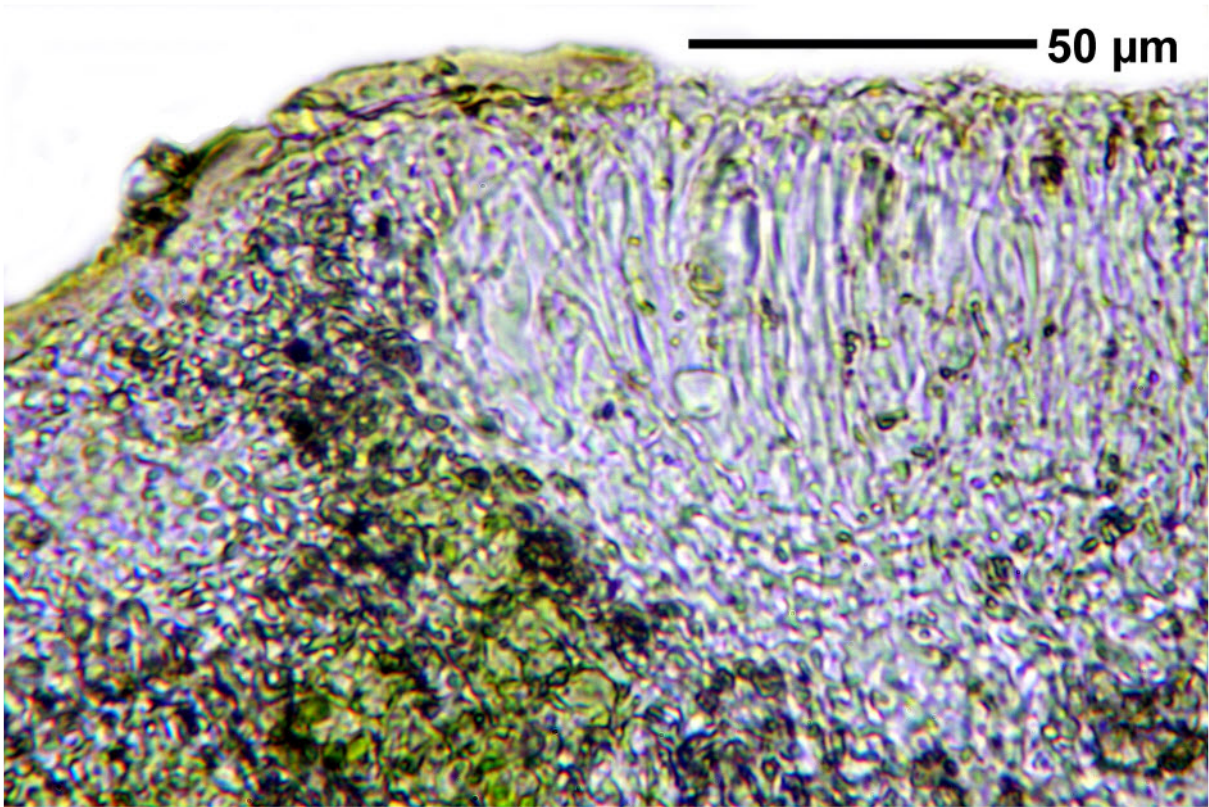
Parasit (schwarze Teile): Sporen braun, 1-(2) zellig, 13-16 x 4,4-8,7 μm , teils mit Keimspalt

[14471], Seychelles, Praslin, zwischen St. Maries Point und Anse Lazio, ca. 4°18.288' S, 55°41.388' E, ca. 0-250 m, an Granit. Leg. Schumm & Frahm 01.10.2008, det. A. Aptroot 2008.

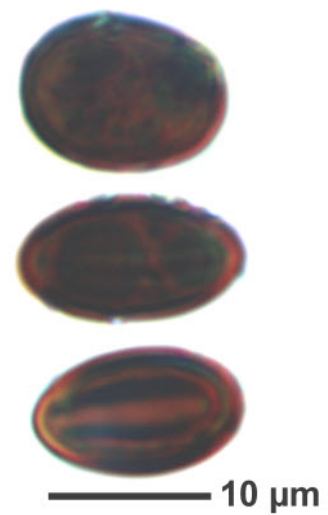
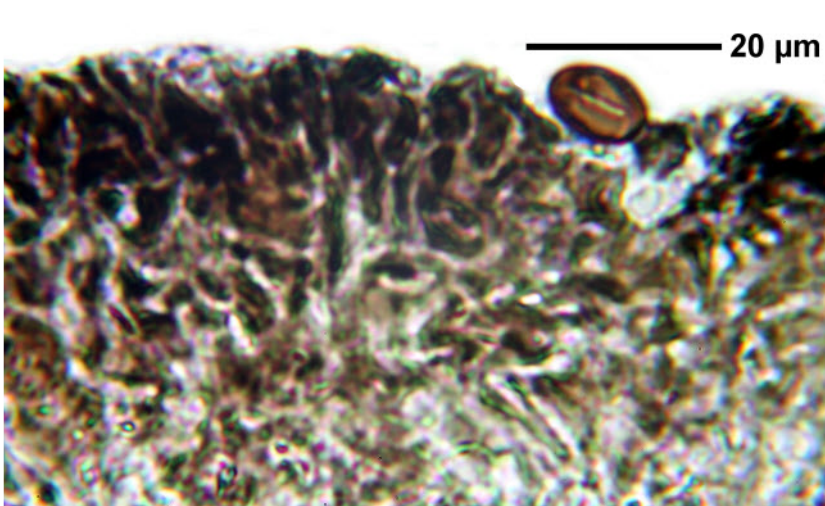
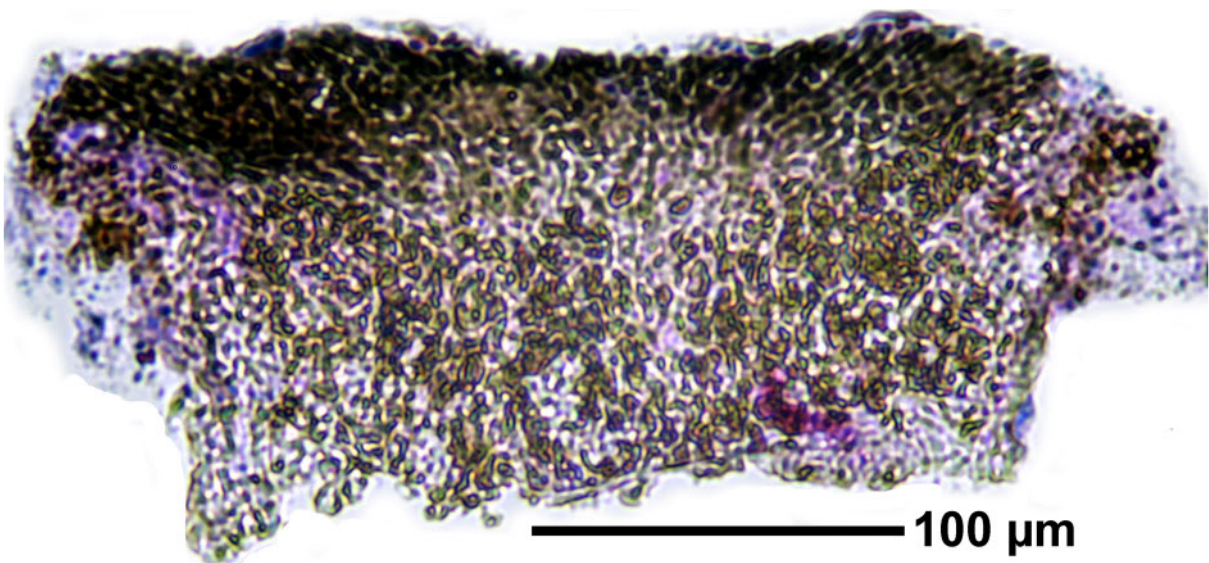


10 μm





lichenicolous fungus



Caloplaca leptozona