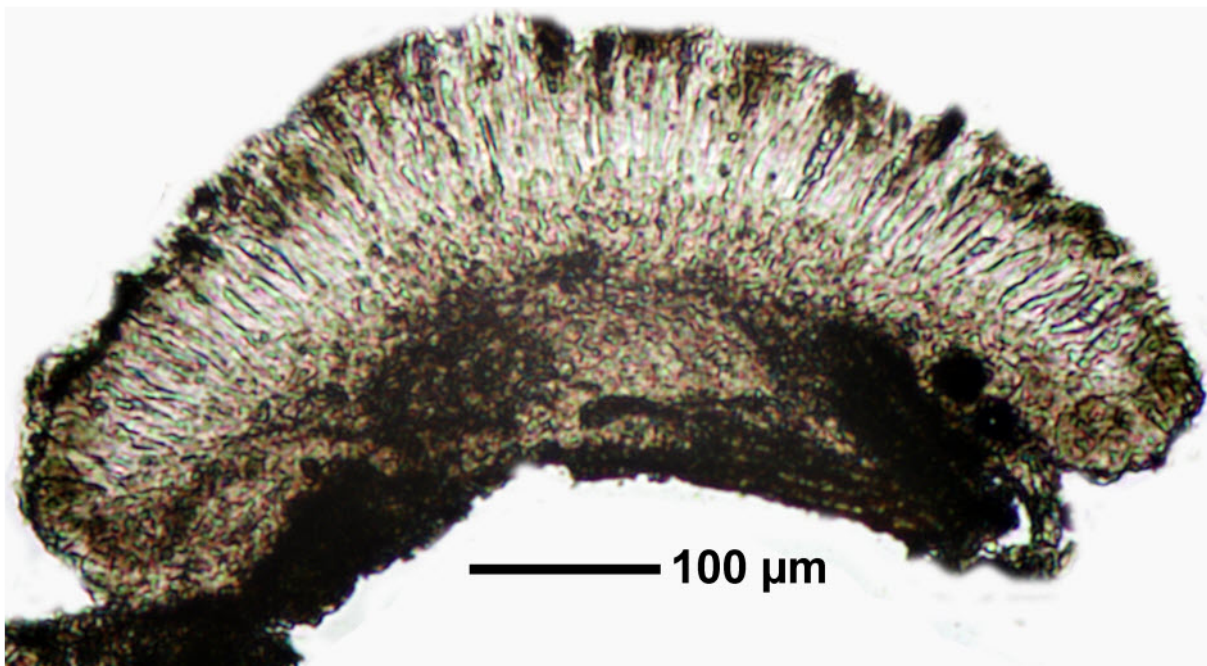
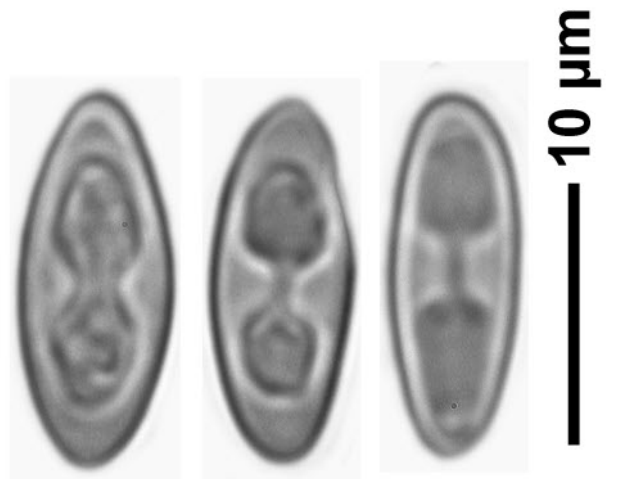
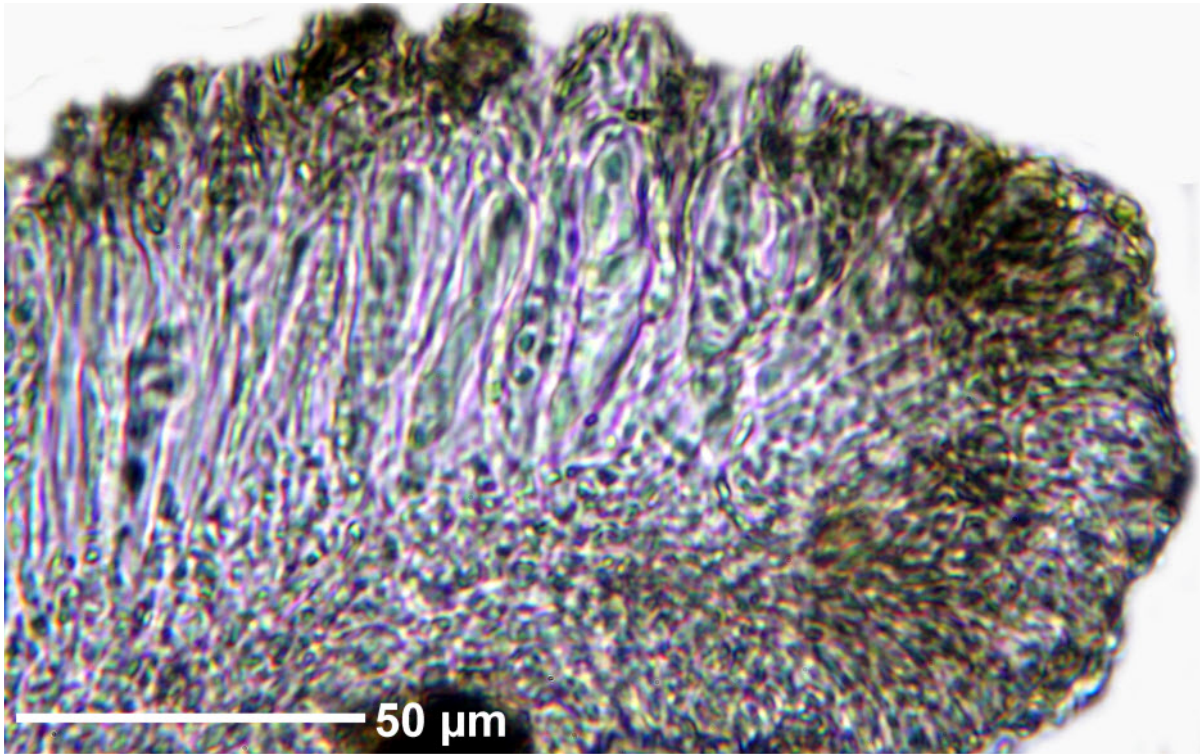


Caloplaca pulicarioides Aptroot

Apothecium black to dark brown, K-. Margin grey, without algae. Spores hyaline, 8/ascus, 13-16 x 5-6 μm . Palaeotropical.

[14494], Seychelles, La Digue, NE-Küste, Anse Gaulette, 4°20.508' S, 55°50.348' E, ca. 2 m. Leg. Schumm & Frahm 02.10.2008, det. Aptroot 2008.





Caloplaca pulicarioides