

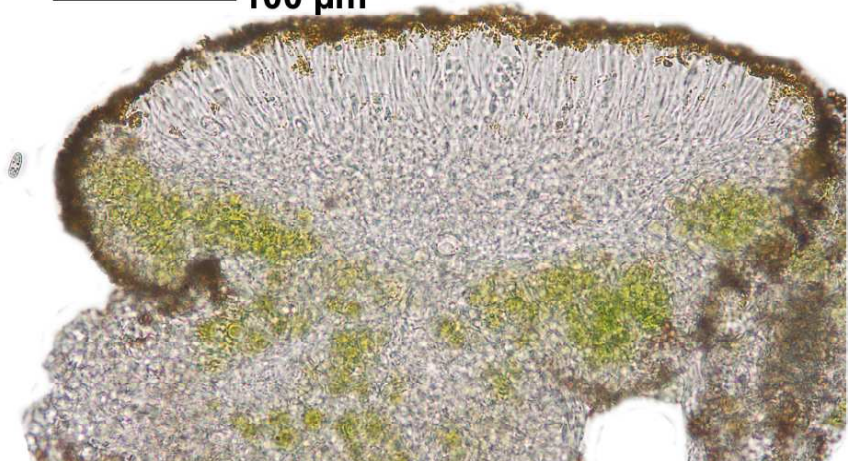
*Candelariella aurella* (Hoffm.) Zahlbr.

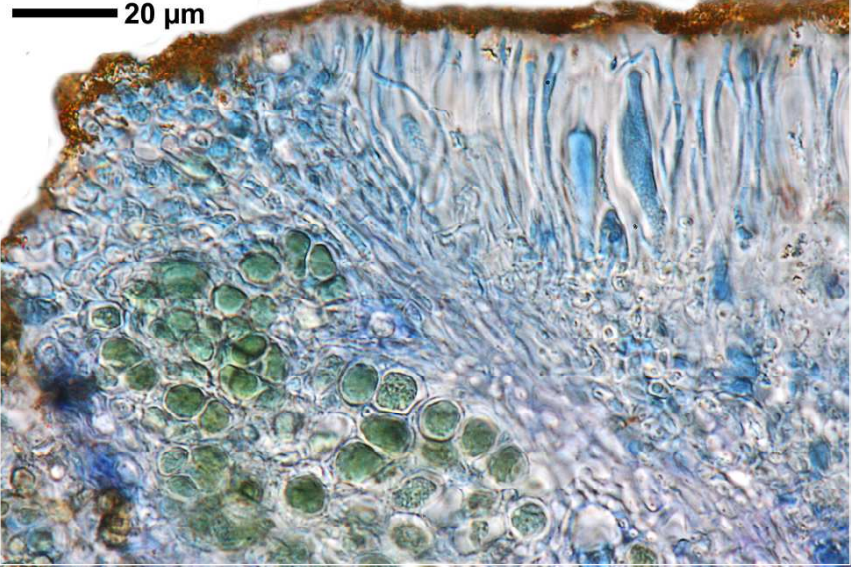
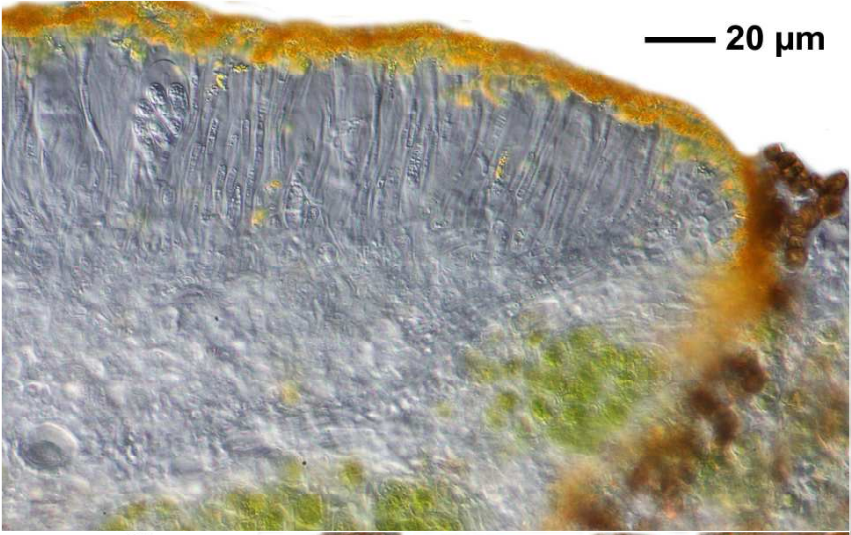
Thallus gelb bis graugelb, vielgestaltig, körnig bis fast fehlend. Apothecien meist reichlich, 0,2-1,2 mm breit, oft gedrängt, mit dickem bis dünnem Rand und gelbgrüner bis dottergelber Scheibe. Sporen 8/Ascus, 10-18 x 4,5-7 µm, hyalin, einzellig, doch durch Plasmafäden oft 1-septiert erscheinend. Chemie: K-, C+ etwas orange, KC- P-; Calycin, Pulvinsäurederivate.

[16569], Germany, Baden-Württemberg, Kreis Göppingen, Messelstein bei Donzdorf, 48,69045° N, 9,83113° E, 750 M, an Betonpfosten. Leg. et det. Schumm 25.07.2010.

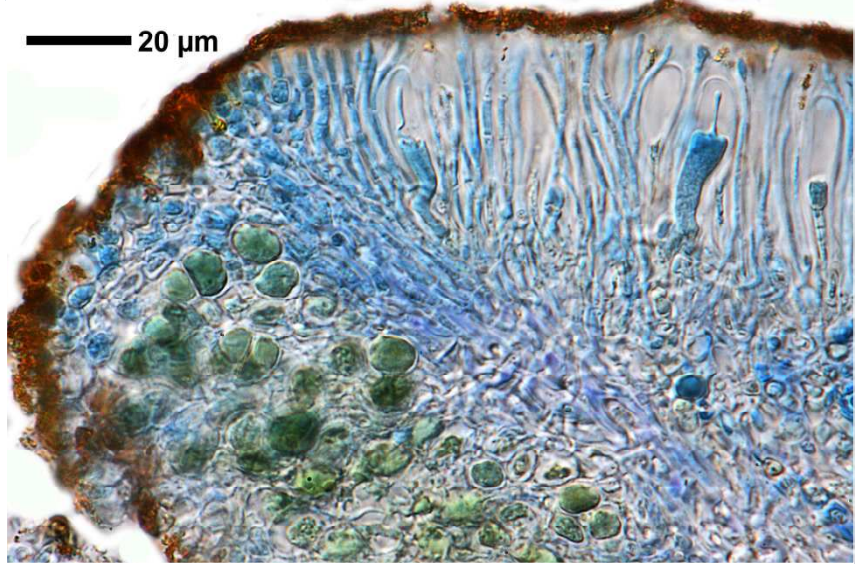
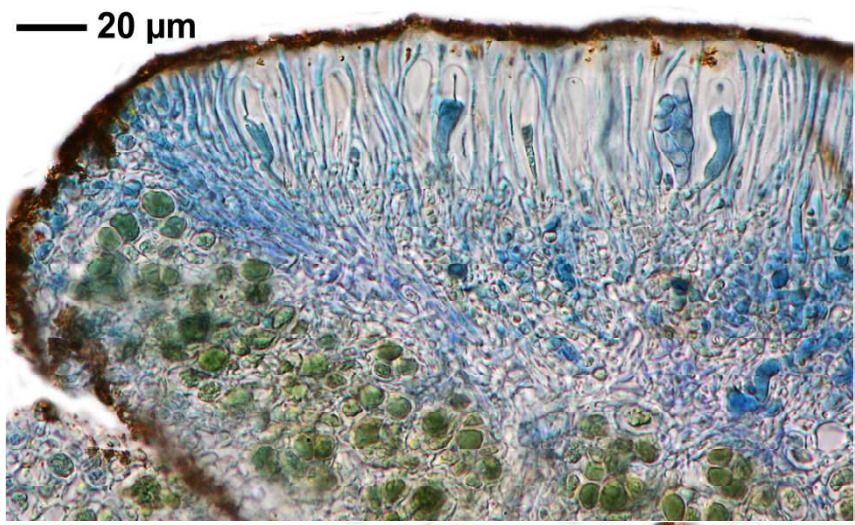


100 µm

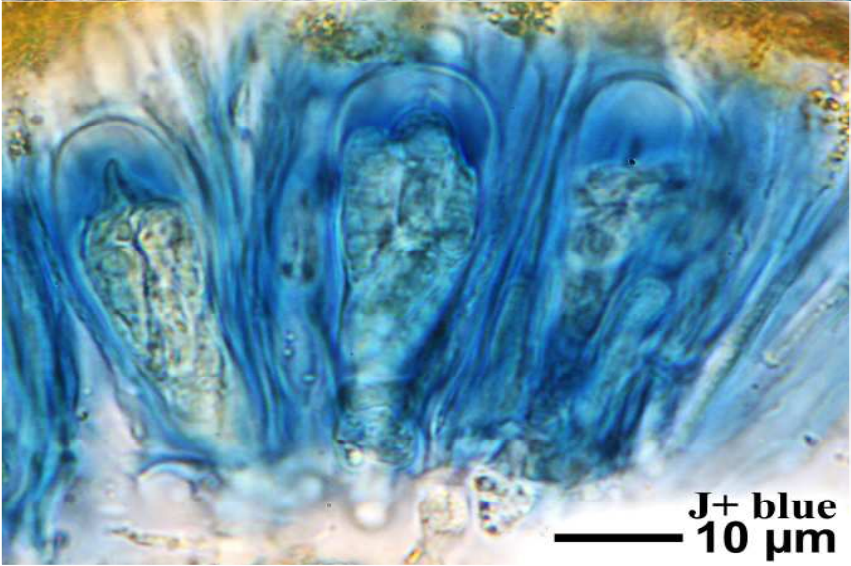
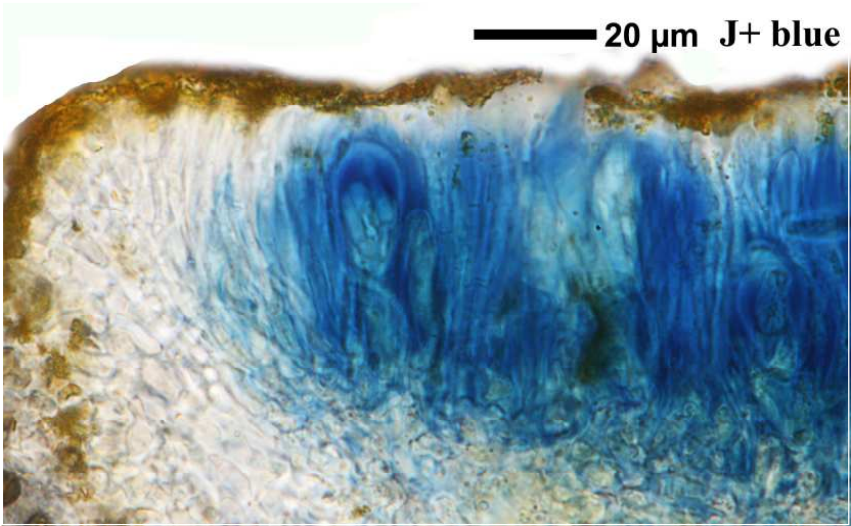




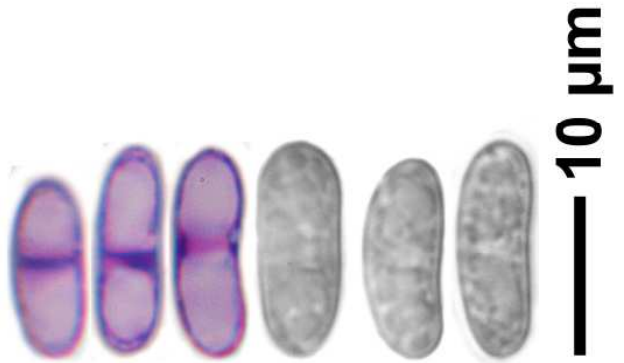
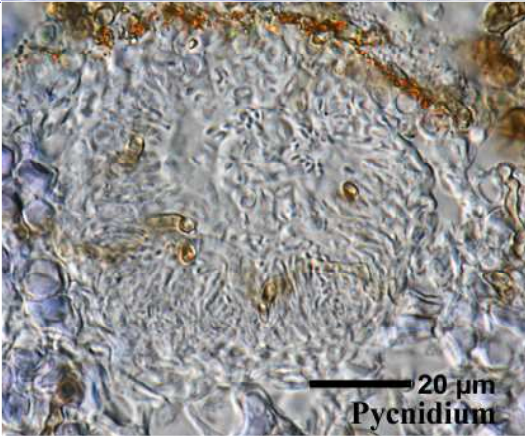
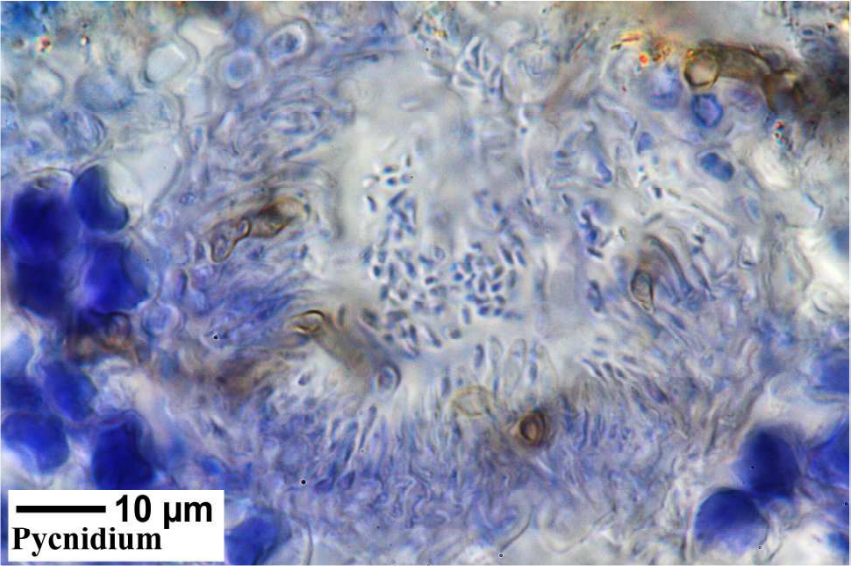
*Candelariella aurella*



*Candelariella aurella*



*Candelariella aurella*



*Candelariella aurella*