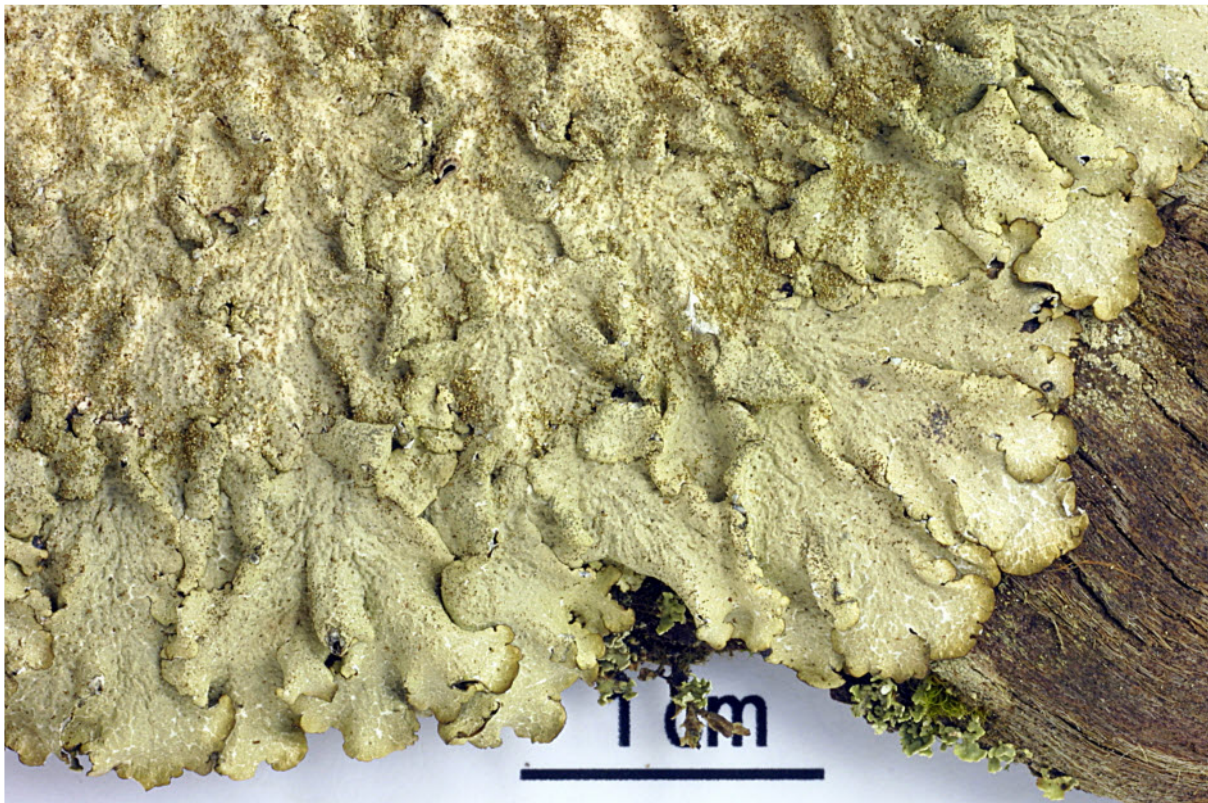


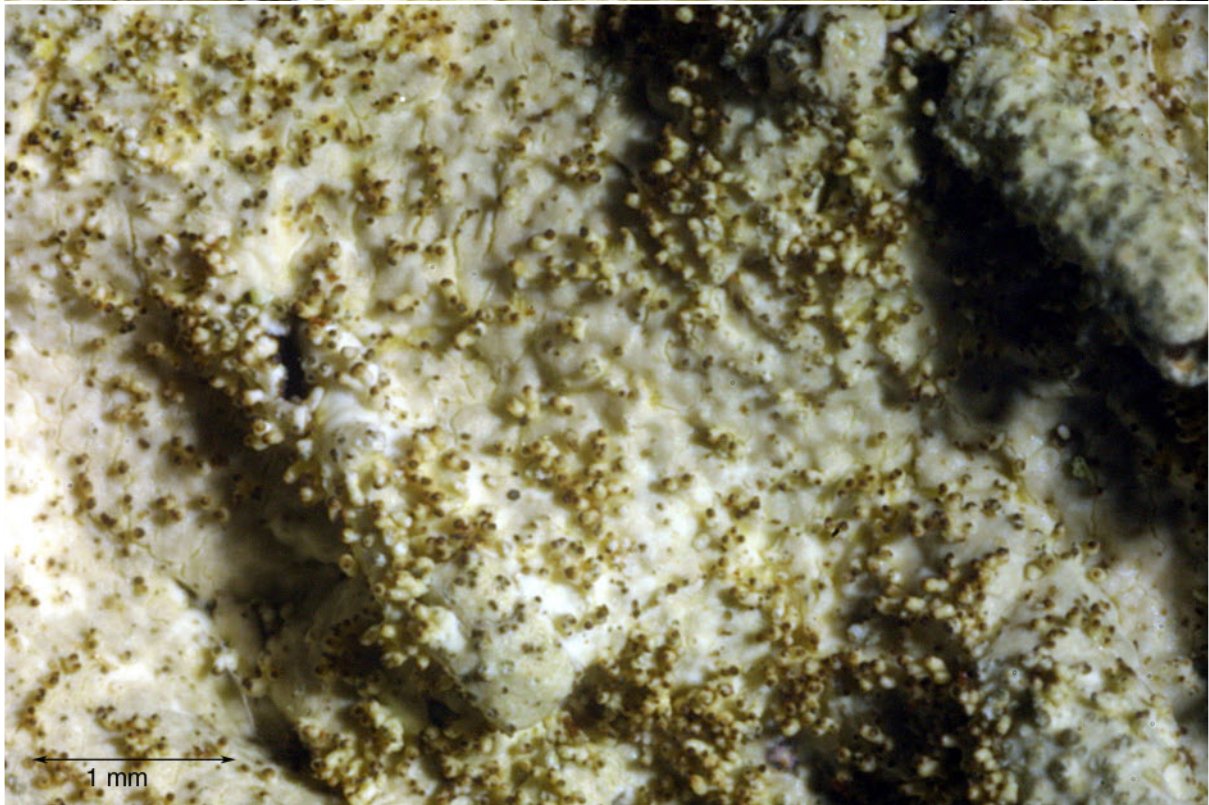
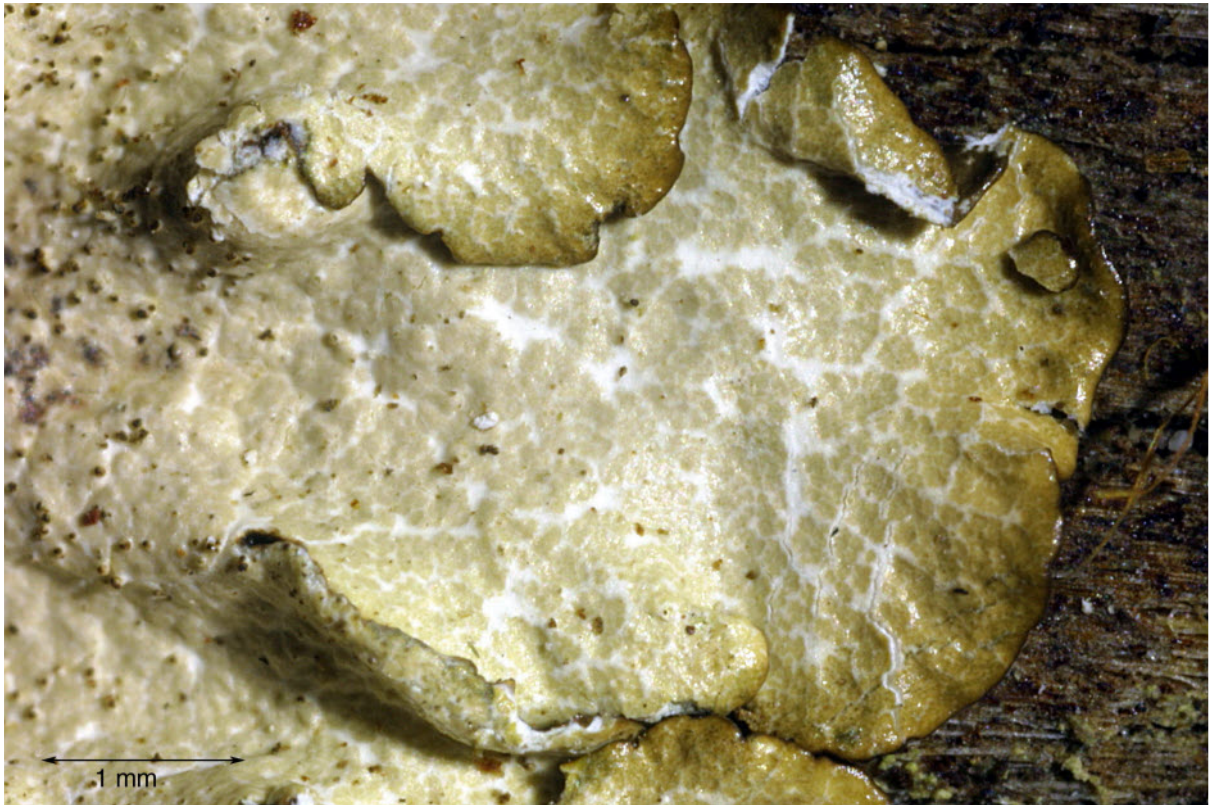
*Canoparmelia caroliniana* (Nyl.) Elix & Hale

Thallus grey, loosely adnate. Lobes 2-5 mm wide. Upper surface reticulate-maculate. Under surface black. Isidia thin, 0.07 mm thick. Without soredia and cilia. Chemistry: cortex K+ yellow, C-, P-; medulla K-, C+ pink, P-; atranorin (min) chloroatranorin (min), stenosporic acid (maj), perlatic acid (submaj), glomelliferic acid (min). Corticolous, rare saxicolous. Pantropical.

[10769], Portugal, Azoren, Sao Miguel, an der Straße SW von Lagoa das Fumas beim Parkplatz Reservada Florestal de Recreio do Cerrado Bezerras, 37°44.632' N, 25°21.939' W, 430 m. Leg. Schumm 03.06.2003, det. J.A. Elix 22.10.2003.







*Canoparmelia caroliniana*