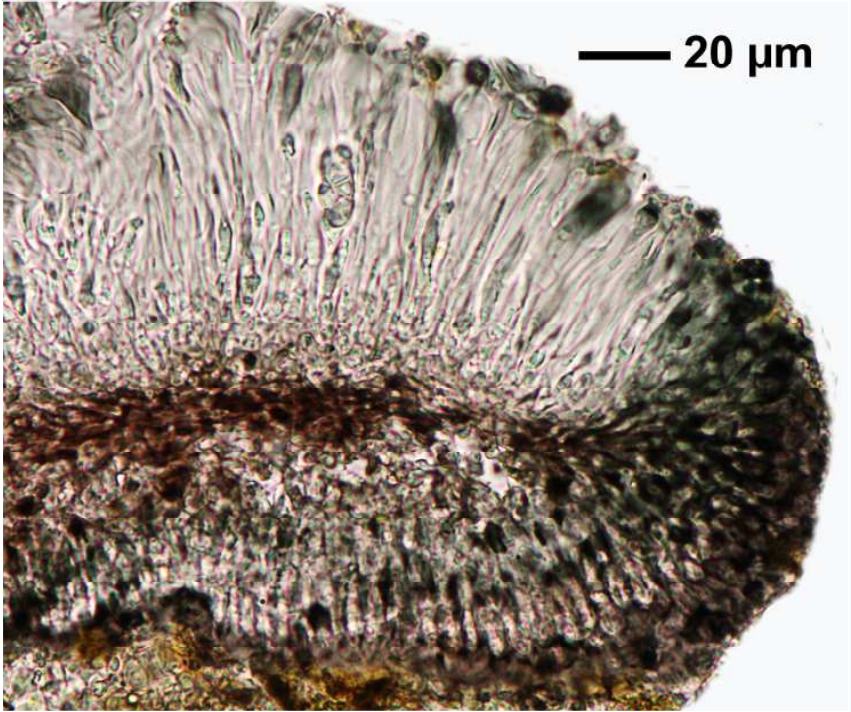
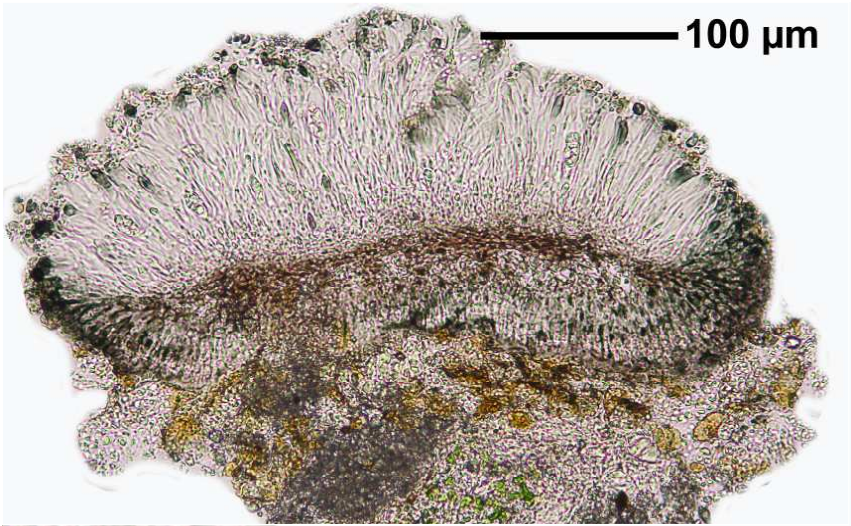


Catillaria athallina (Hepp.) Hellbom
[= *Toninia athallina* (Hepp) Timdal]
[= *Kiliasia athallina* (Hepp) Hafellner]

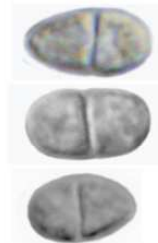
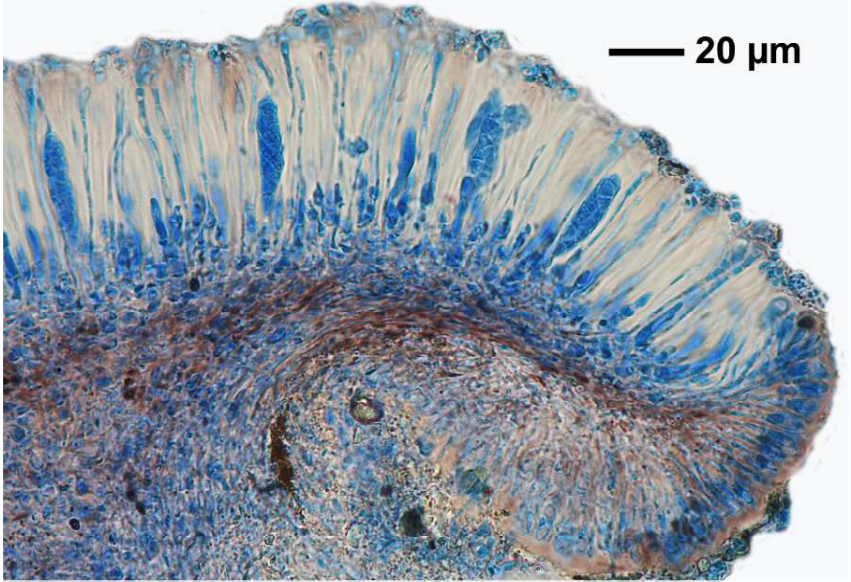
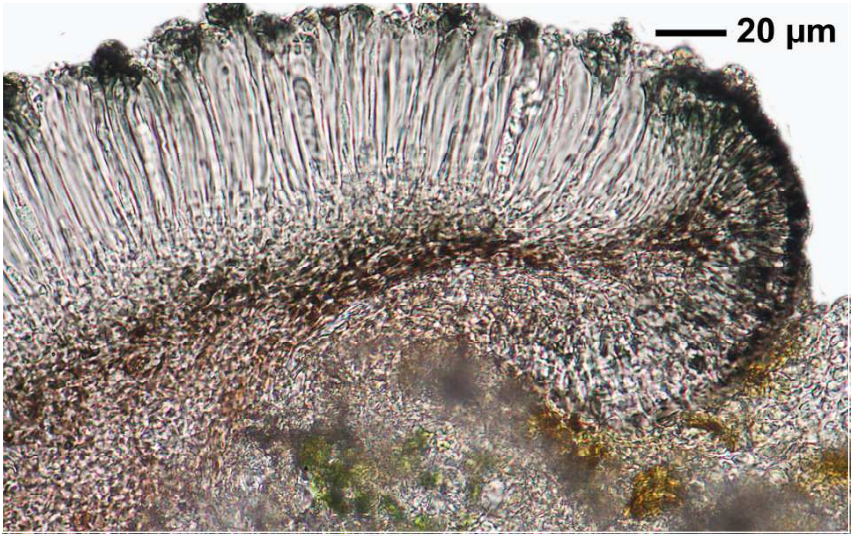
Thallus unauffällig, endolithisch. Apothecien schwarz 0.3-0.5 mm. Hypothecium rotbraun. Epitecium olivbraun bis grünlich, K-. Hymenium J+ braunrot. Sporen hyalin, 1-septiert, 7.5-8.5x 4-5 μ m. Chemie: K-, C-, P-. Lit. Kiliás (1981), Timdal (1991).

[211], Germany, Baden-Württemberg, Kreis Göppingen, Donzdorf, Kalkbruch an der Messelbergsteige, ca. 700 m, leg. et det. Schumm 12.10.1968, test. Klement 1970, Kiliás 1979.

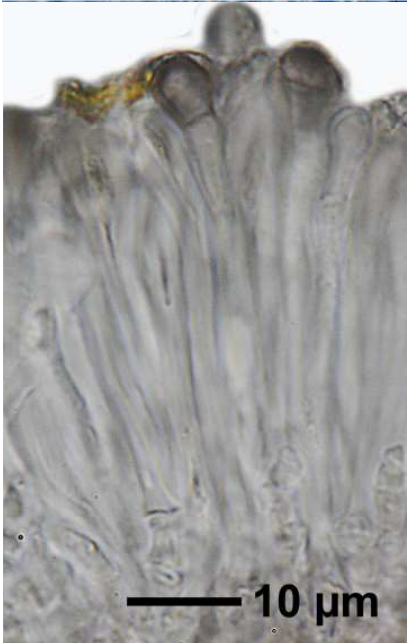
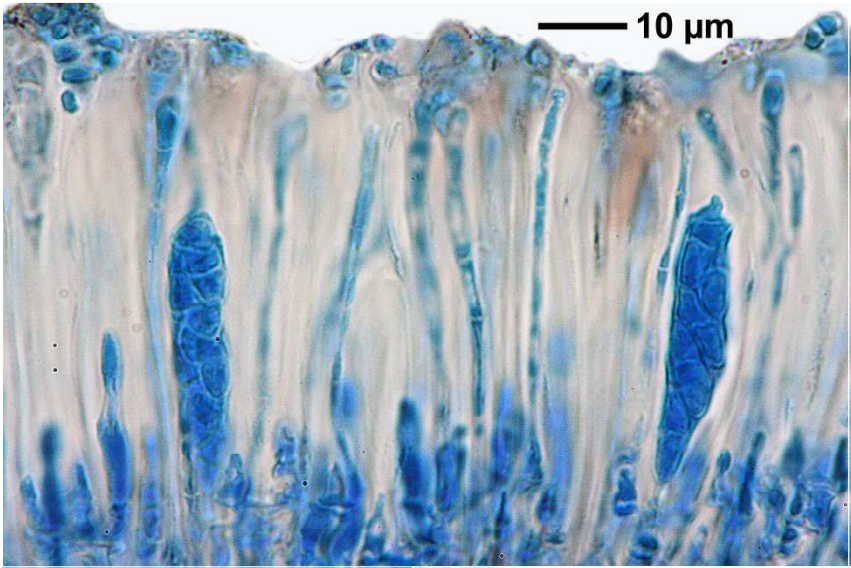




Catillaria athallina



Catillaria athallina



Catillaria athallina