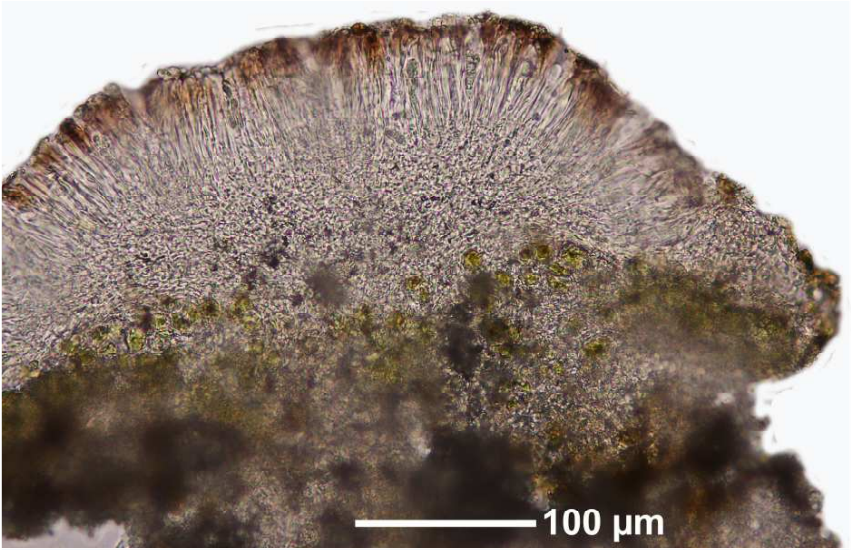


Catillaria detractula (Nyl.) H.Olivier

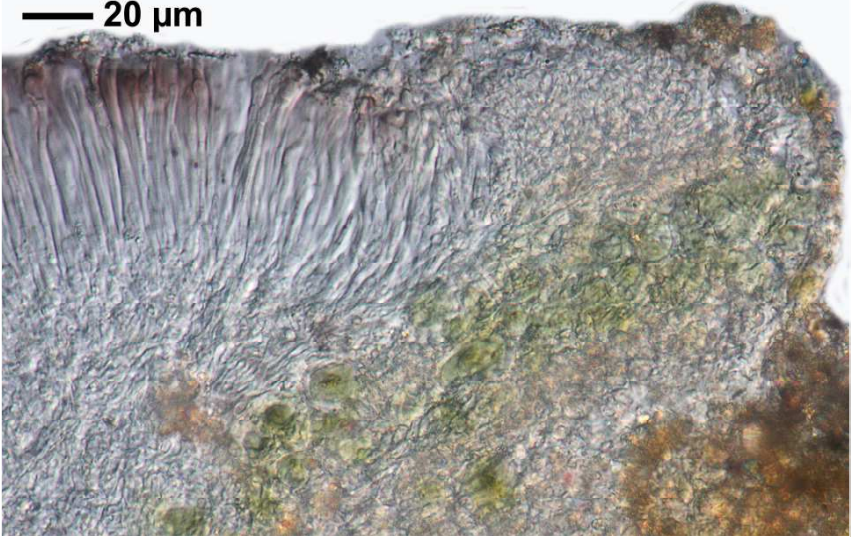
Excipulum nicht kohlig, Hypothecium hell, Epithecium K⁺ schwach rötlich, Hymenium ca. 72 µm, Paraphysen straff, Sporen hyalin, 1-septiert, 10-12 x 4-5 µm, 8/Ascus.

[215], Germany, Baden-Württemberg, Kreis Göppingen, Schwäbische Alb bei Gammelshausen, in Lesehaufen auf dem Sielenwang, ca. 700 m, leg. Schumm 11.06.1967, det. Kilius 1979.



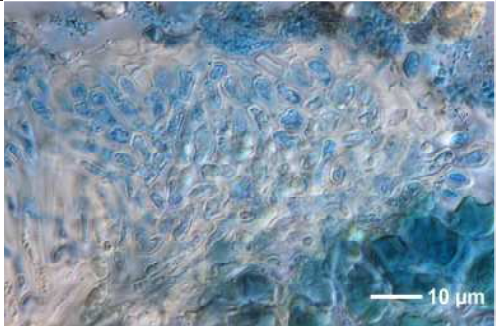
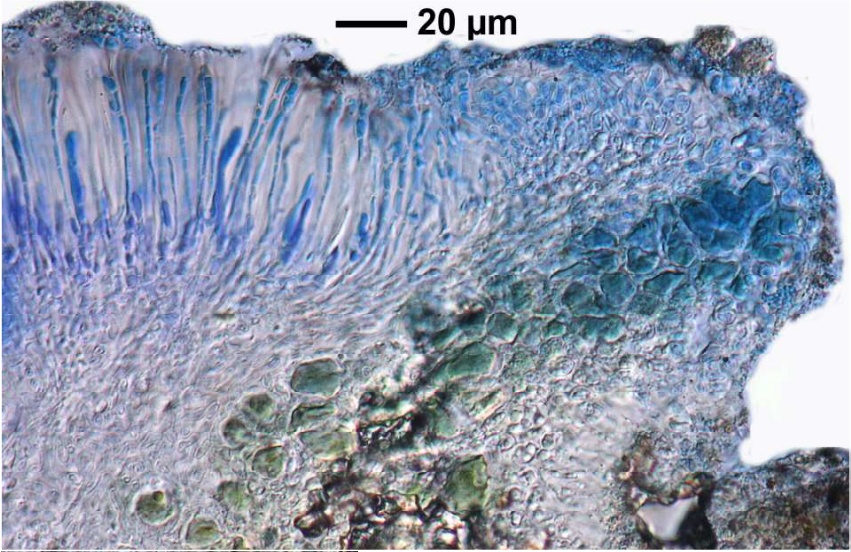
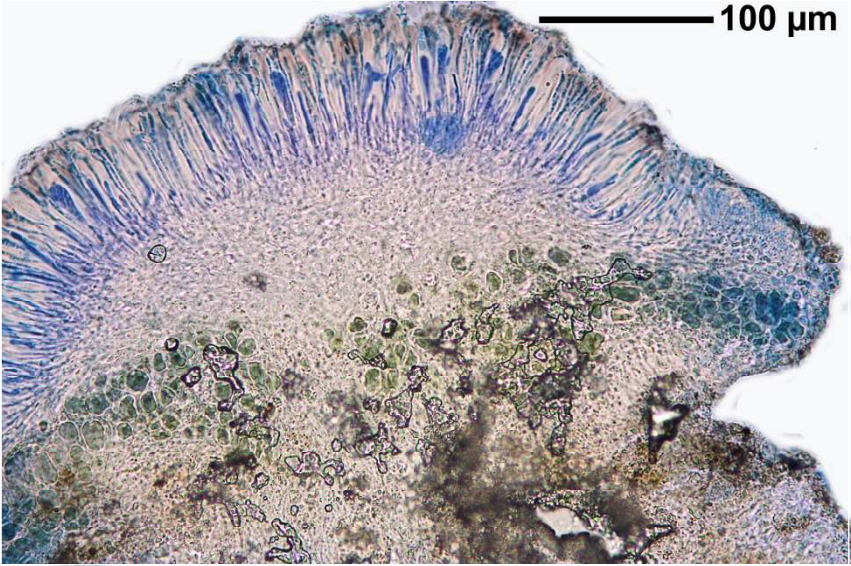


— 20 µm



— 10 µm

Catillaria detractula



Catillaria detractula

