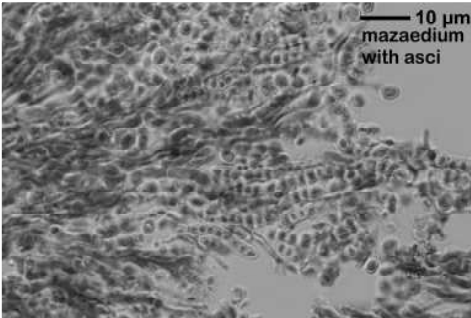
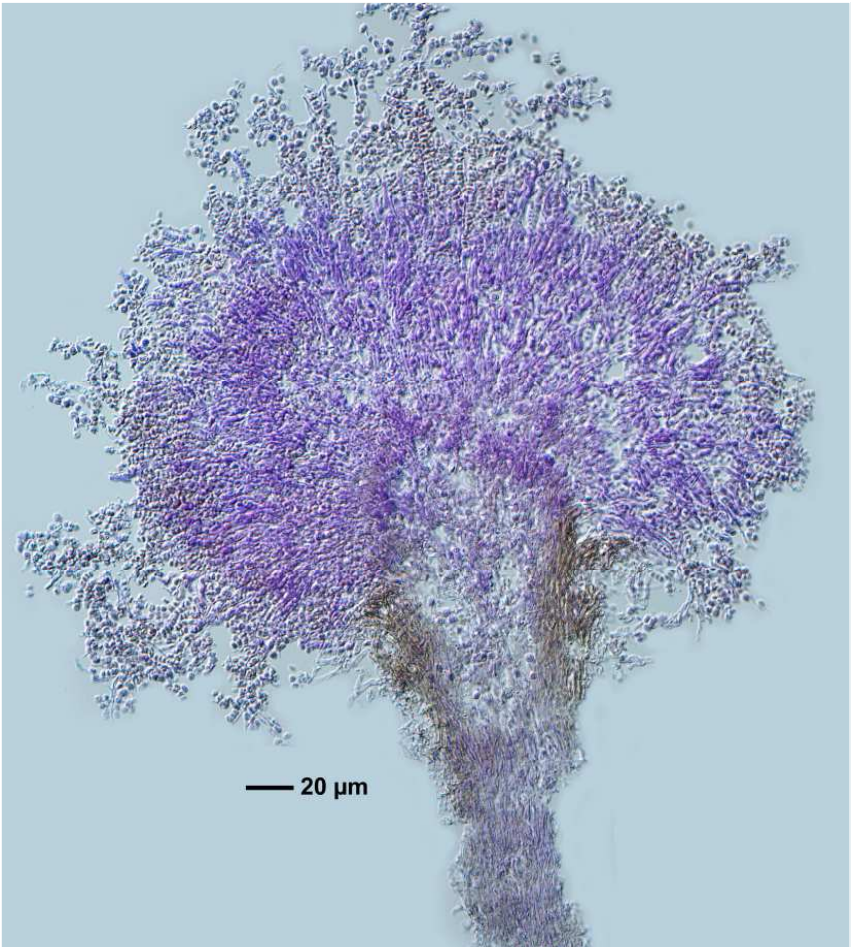
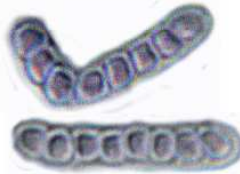


***Chaenotheca furfuracea*** (L.) Tibell  
[= *Coniocybe furfuracea* (L.) Ach.]

Thallus gelb, pulverig-leprös. Photobiont: *Stichococcus*, Zellen verlängert rechteckig, in Ketten. Apothecien 1,6-3 mm hoch, Köpfchen kugelig. Stiel und Köpfchen grüngelb bereift. Sporen braun, 1-zellig, kugelig, 2,3-4 µm. Chemie: K-, C-, P-, J-; gelber Reif aus Pulvin- und Vulpinsäure. Bergwälder, luftfeuchte, regengeschützte Borkenritzen und Wurzelhö-



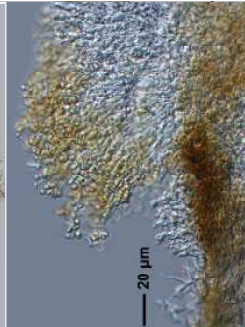
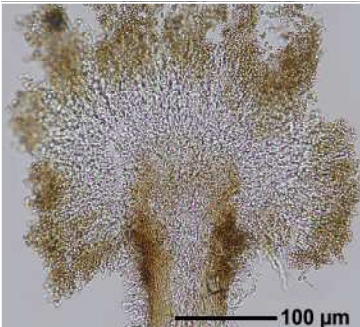
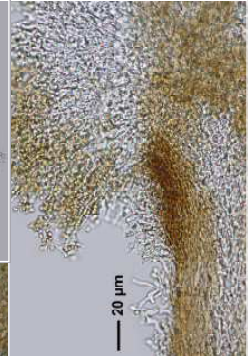
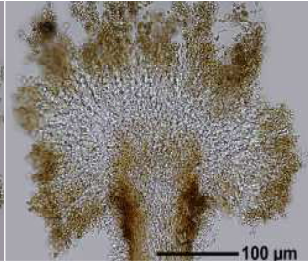
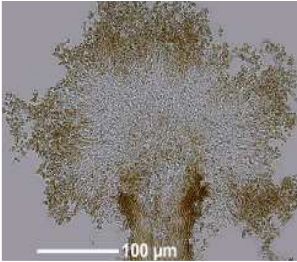
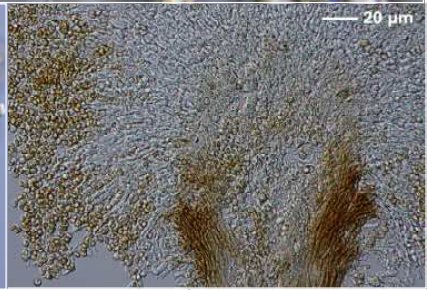
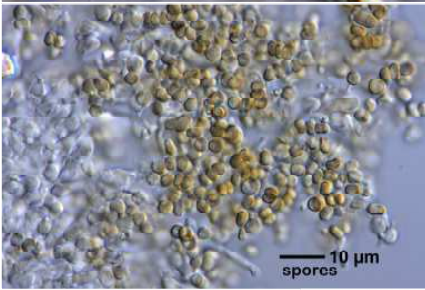
**young asci**  
— 10 µm



lungen.

[1963], Germany, Baden-Württemberg, Schwarzwald, Tälchen nördlich von Hauingen, an herabhängenden Wurzeln, ca. 350 m. Leg. Dr. Alexander Schmidt 07.09.1971.





*Chaenotheca furfuracea*  
(L.) Tibell