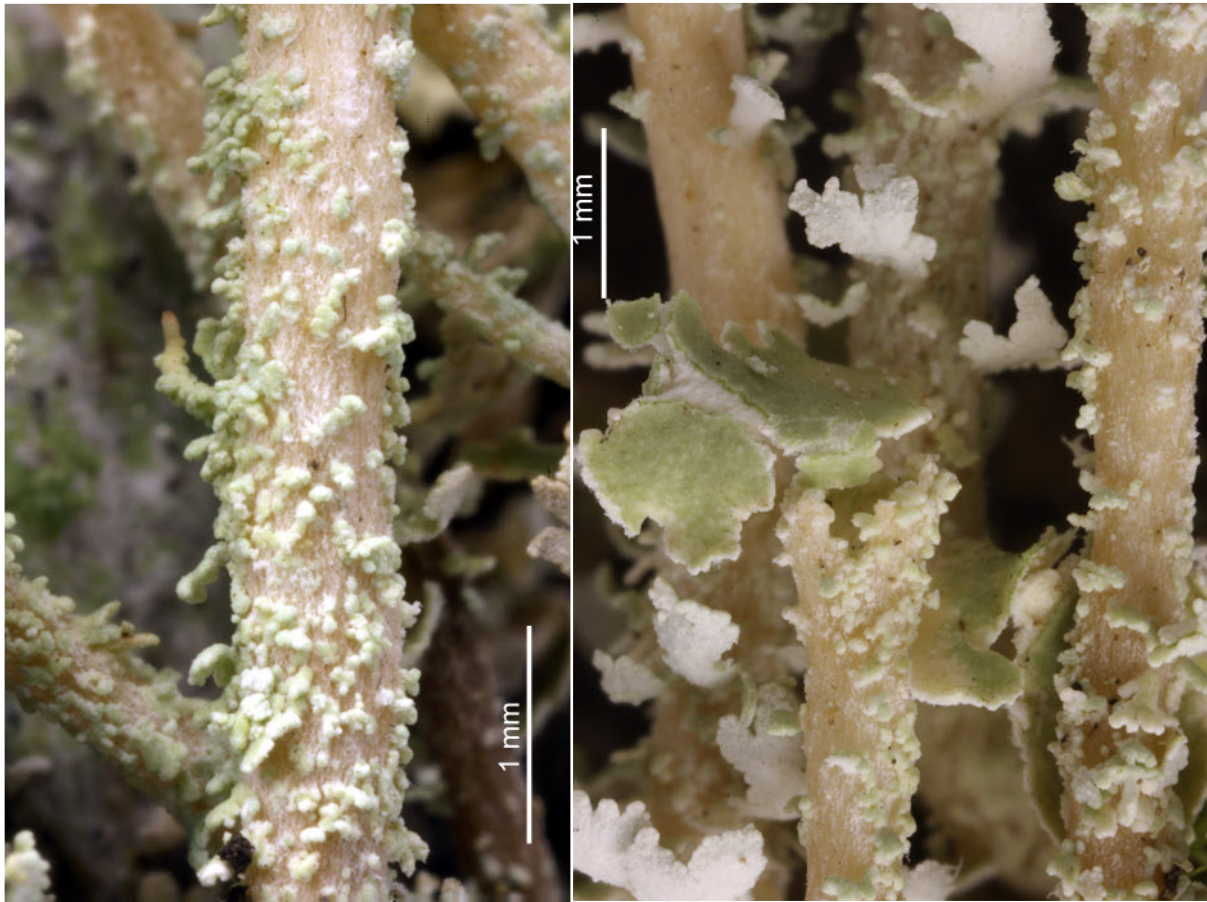
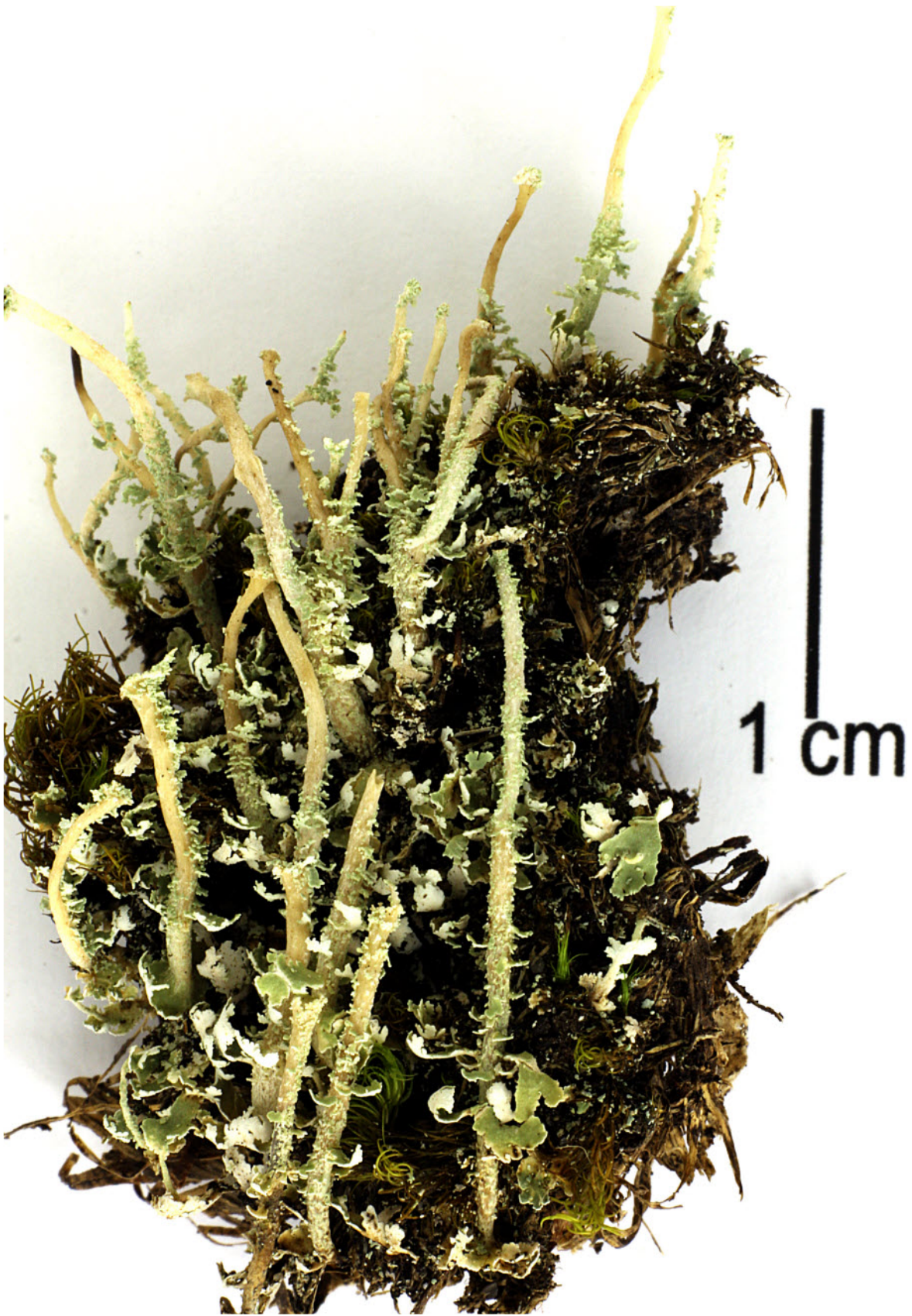


*Cladonia cartilaginea* Müll.Arg.

Podetia simple or branched, sorediate, cortex absent, revealing the cartilagineous medulla. K-, P+ red; fumarprotocetraric (maj), protocetraric acid (tr) (p246/1). Pantropical.

[14571], Seychellen, Mahe, Sentier de Randonnée de Glacis-Trois Frères Nature Trail, 4°38.210' S, 55°26.7968' E, ca. 480 m. Leg. Schumm & Frahm 07.10.2008, det. Aptroot.





*Cladonia cartilaginea*