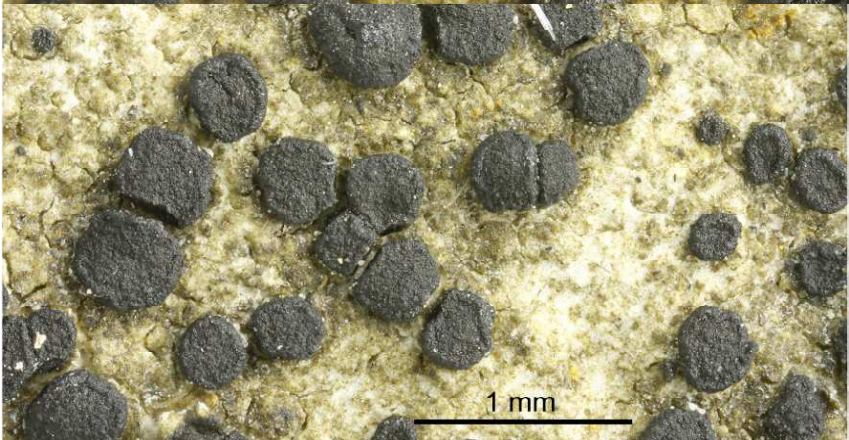


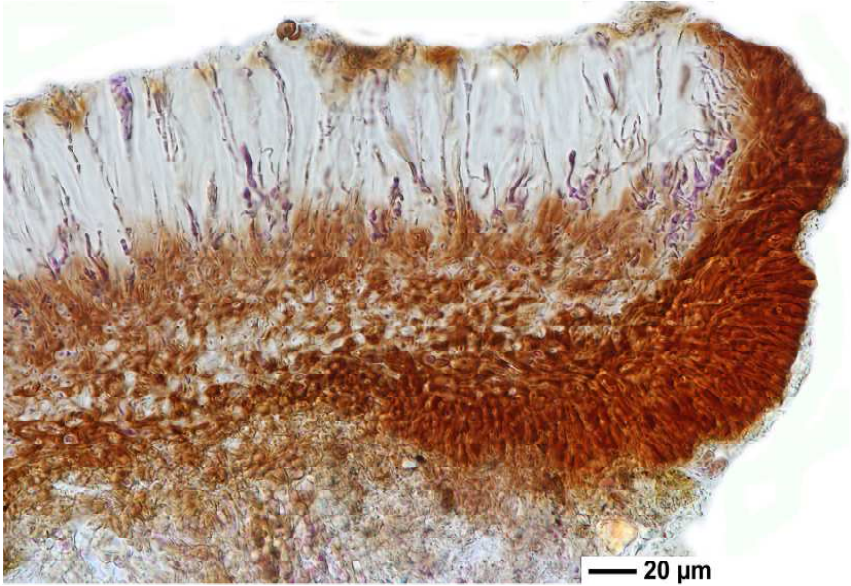
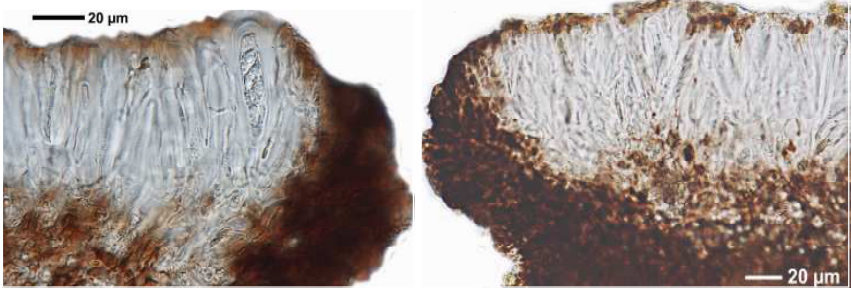
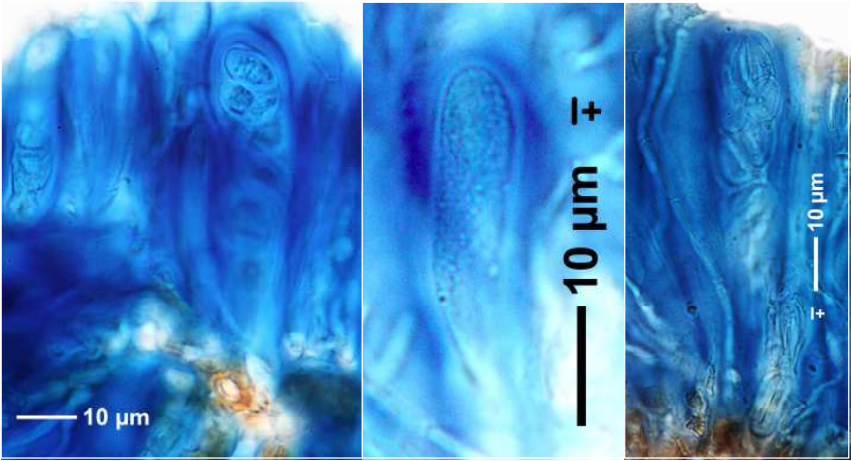
*Clauzadea monticola* (Ach.) Hafellner & Bellem.

[= *Lecidea monticola* Ach.]

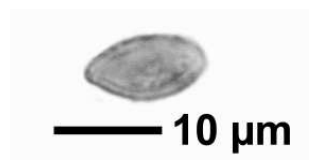
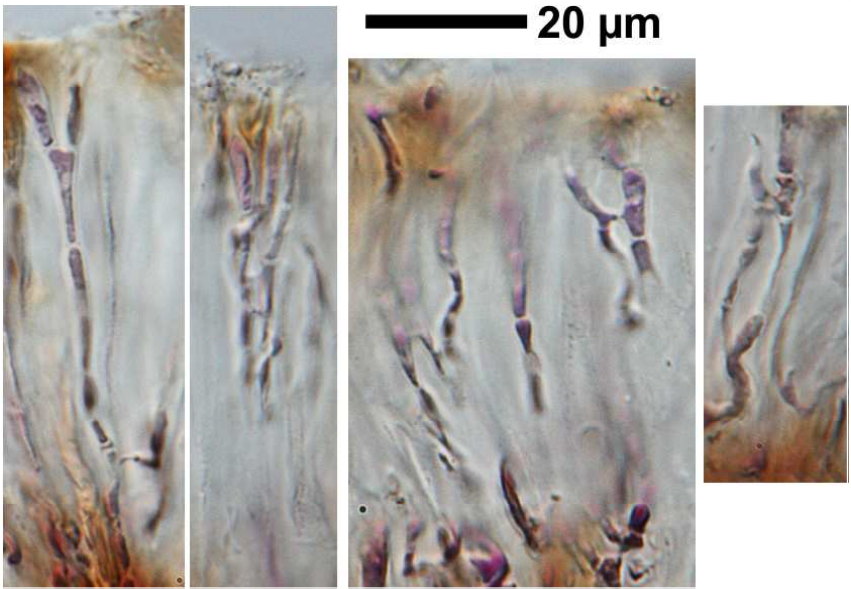
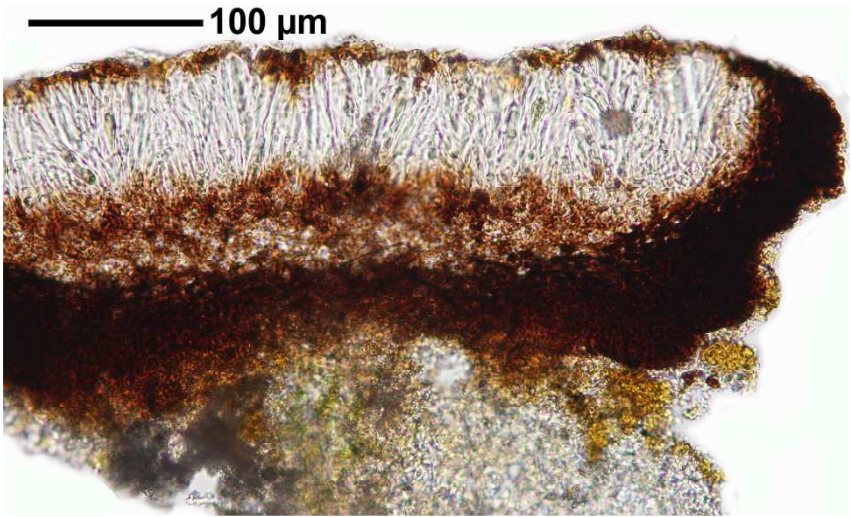
Epithecium braun, 8.5 µm. Hymenium hell, nicht inspers, 75 µm. Paraphysen mit Anastomosen, nicht leicht frei. Hypothecium braun, 150 µm. Amphithecium durchgehend schwarzbraun, unten heller, ca. 50 µm. Sporen 1-zellig, hyalin, 11-12 x 5,5 µm. Apoth. ohne Grüntöne.

[4550], Germany, Baden-Württemberg, Schwäbische Alb, Kreis Göppingen, zwischen Reichenbach und Unterböhringen auf Kalksteinchen am Südhang des Haarberges (Wanderweg zum Weigoldsberg) in Steppeheide, ca. 600 m. leg. D. & F. Schumm 28.04.1996





*Clauzadea monticola*



*Clauzadea monticola*