

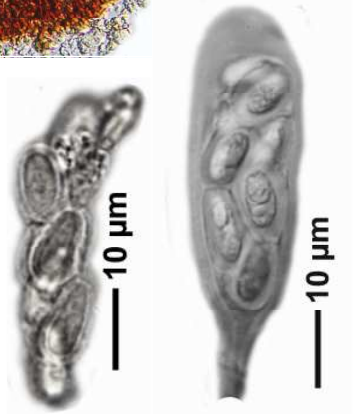
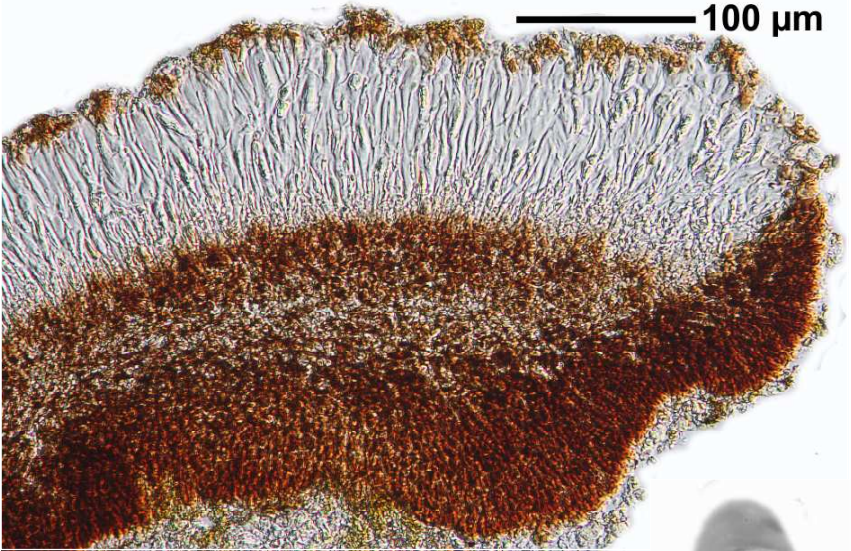
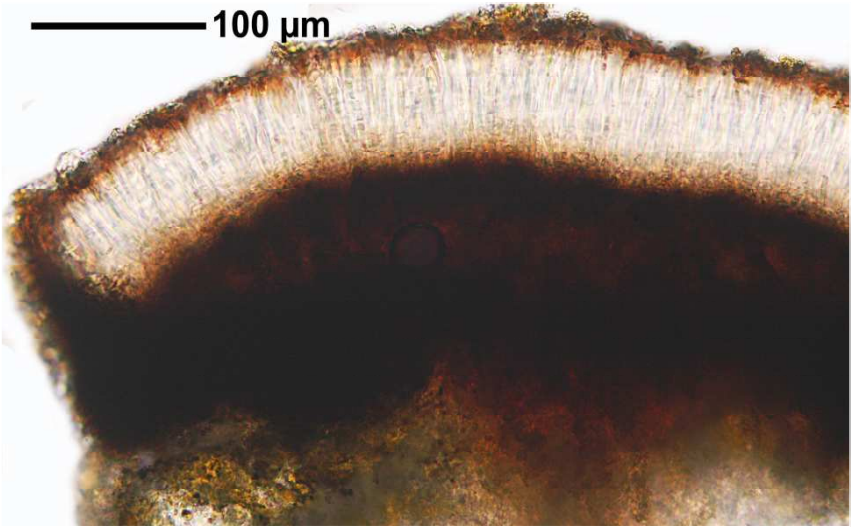
*Clauzadea monticola* (Ach.) Hafellner & Bellem.

[= *Lecidea monticola* Ach.]

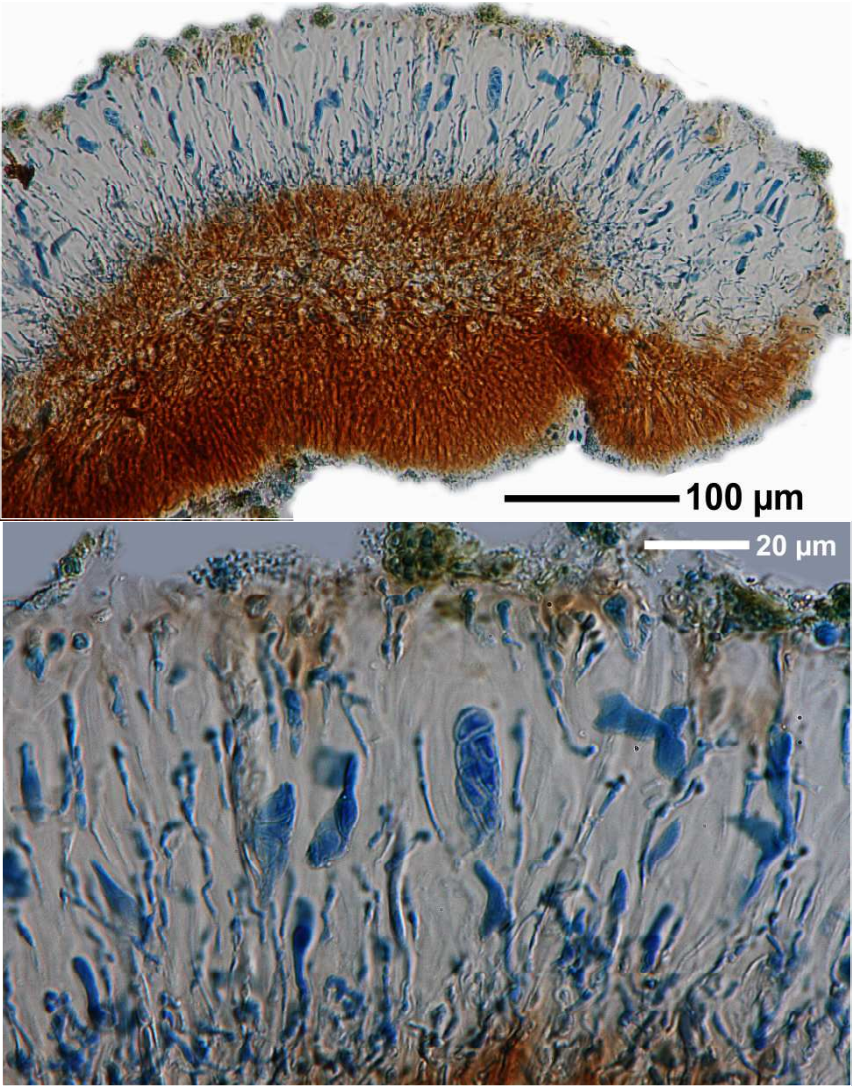
Paraphysen verzweigt, mit Anastomosen. Sporen hyalin, zu 8, 1-zellig, jung im Ascus mit auffallend dicker Schleim(?) -Wand. K&J+ an der Ascusspitze blau.

[773], Germany, Baden-Württemberg, Schwäbische Alb, Kreis Heidenheim, zwischen Weißenstein und Böhmenkirch, ca. 708 m, an Kalksteinen, leg. Schumm 26.05.1968, det. Klement 1968.

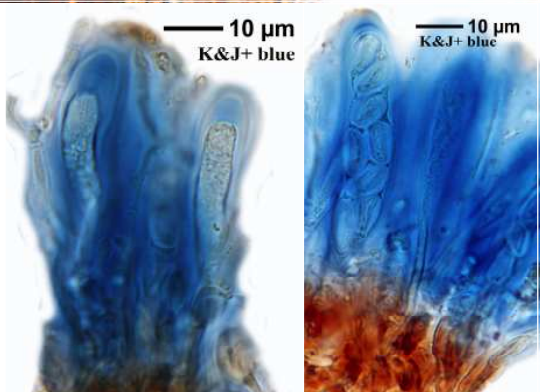
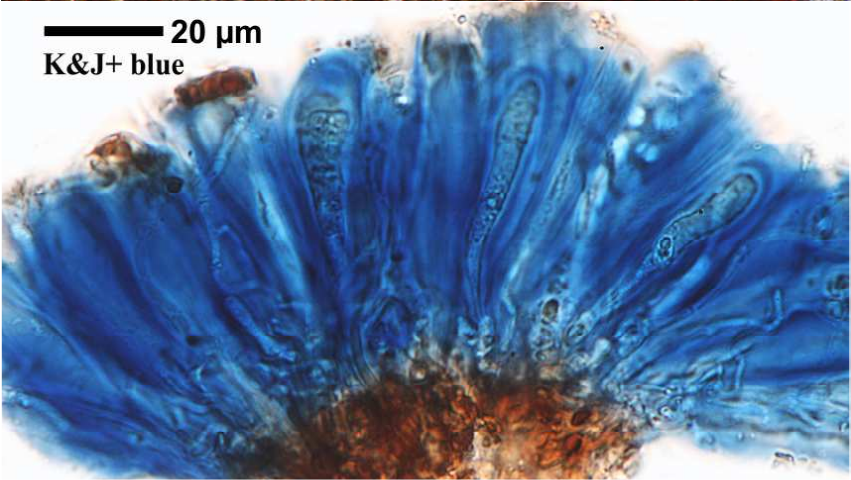
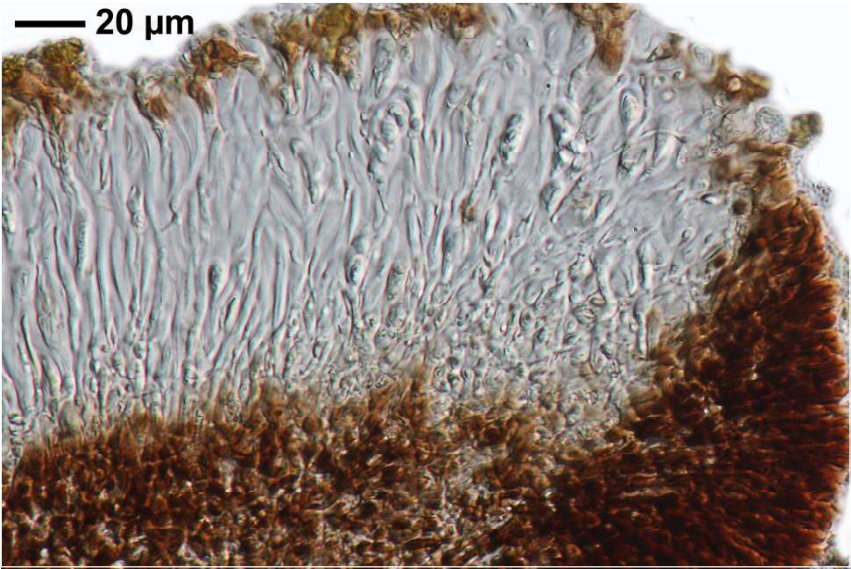




*Clauzadea monticola*



*Clauzadea monticola*



*Clauzadea monticola*