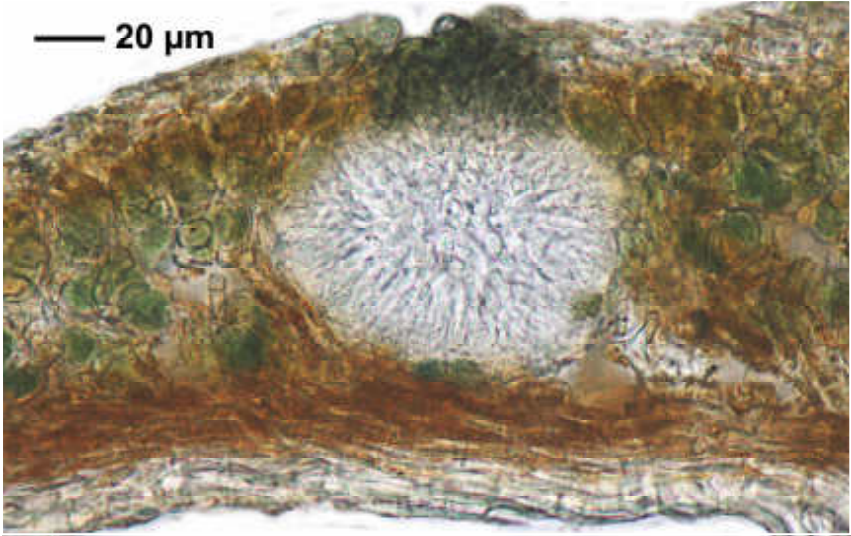


Coccocarpia endoferruginea (Räs.) Arvidsson

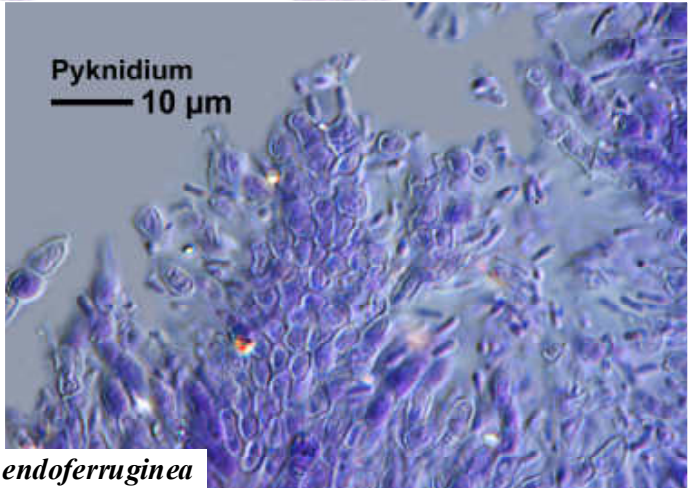
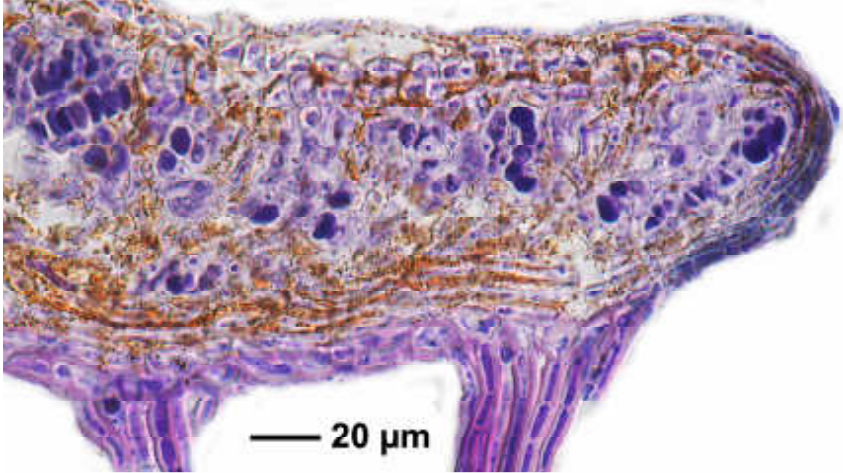
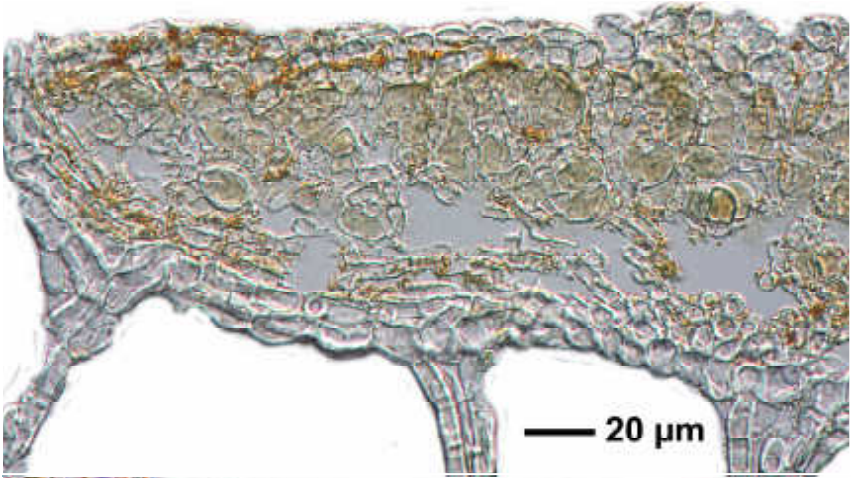
Thallus yellowish grey, without isidia. Upper surface with or without concentric ridges; medulla orange, K-. Lower surface pale creamish to black, rhizinate. Apothecia up to 2.5 mm, adnate, without a visible proper margin; disc black. Ascospores fusiform, 8/ascus, 9-14 x 3-5 μm . Pycnospores 2-4 x 1 μm . Chemistry: K- or yellowish, C-, KC-, P-, UV-. Corticolous.

[15573], La Reunion, Wanderpfad westlich Col de Bellevue in Richtung Col de Bébour; 21,14605° S, 55,57029° E, 1550 m. Leg. Schumm & Frahm 16.09.2009, det. P.M. Jorgenson 2009





Coccocarpia endoferruginea



Coccocarpia endoferruginea