

*Coccocarpia erythroxyli* (Spreng.) Swinscow & Krog

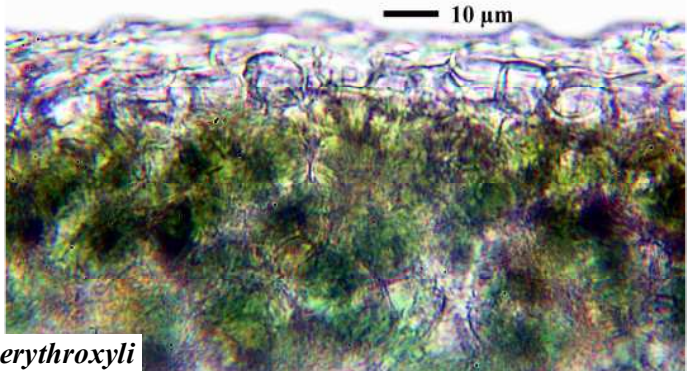
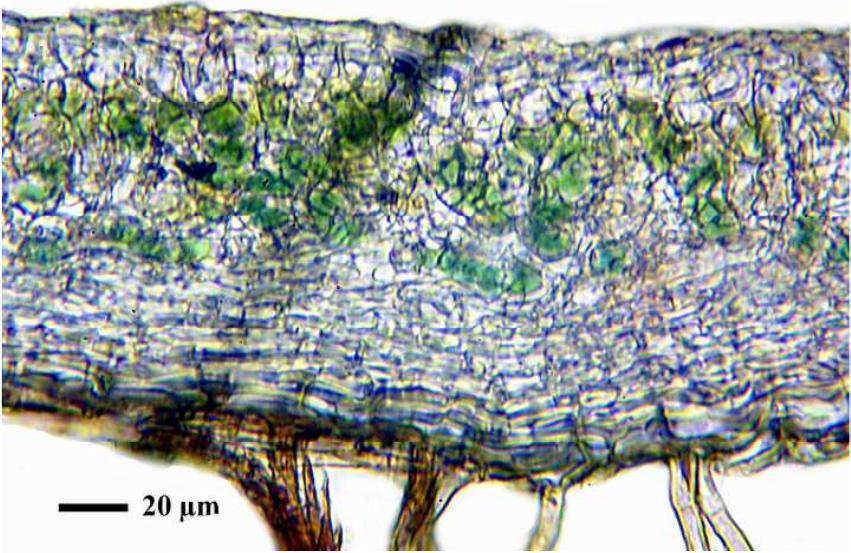
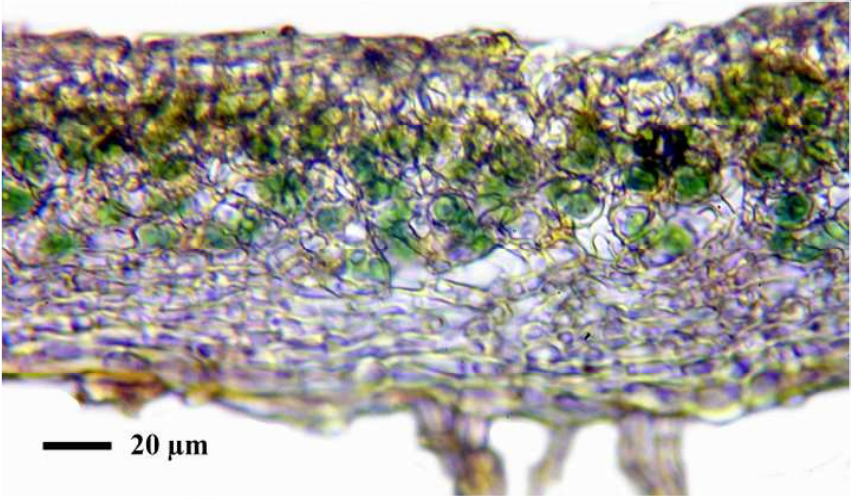
Without isidia, usually with adnate apothecia. Upper cortex built out of 2-3 rows of short-rectangular, periclinally orientated cells. Medulla and lower surface consist of long, thick walled, periclinale orientated hyphae with narrow lumina.

[11774], Thailand, Prov. Chiang Mai, Doi Inthanon, am Rande des immergrünen Regenwaldes nördlich des Checkpoints (gegenüber der Abzweigung nach Mae Chaem), an freistehendem Baum, 1720 m. Leg. Schäfer-Verwimp 08. April 2004 Nr. 23855, det. Schumm 2004.

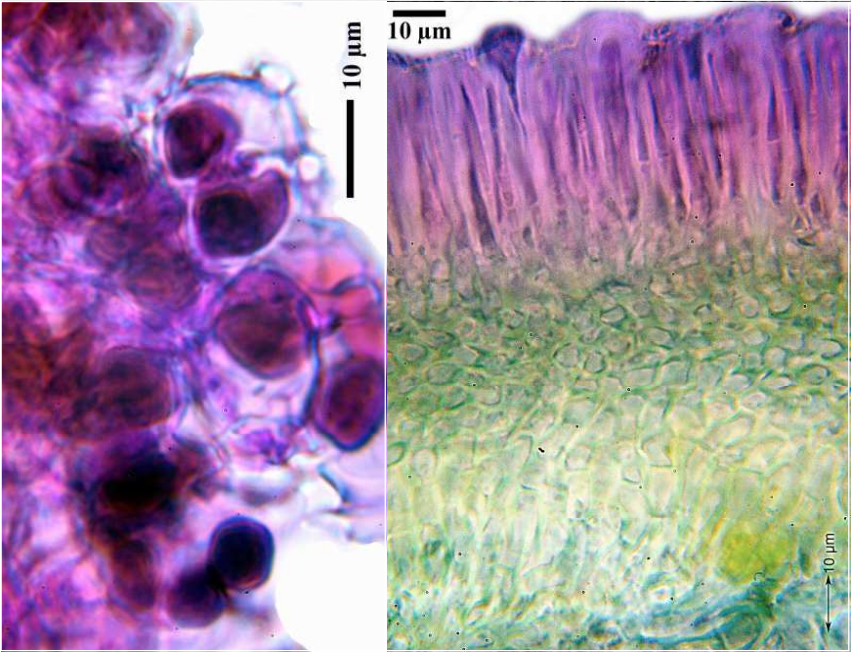
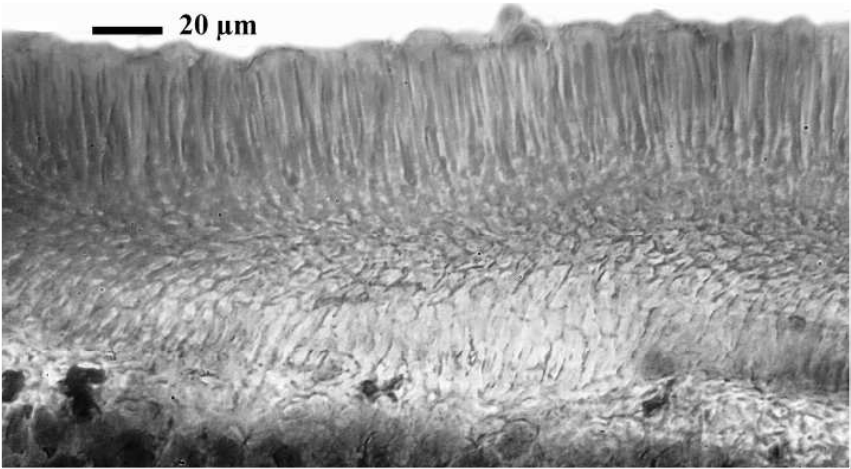




*Coccocarpia erythroxyli*



*Coccocarpia erythroxyli*



*Coccocarpia erythroxyli*