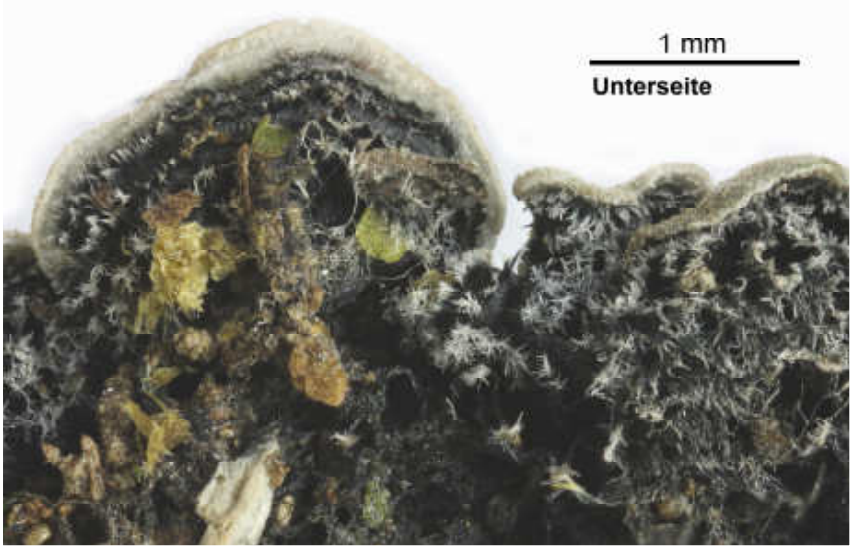


Coccocarpia imbricascens Nyl.

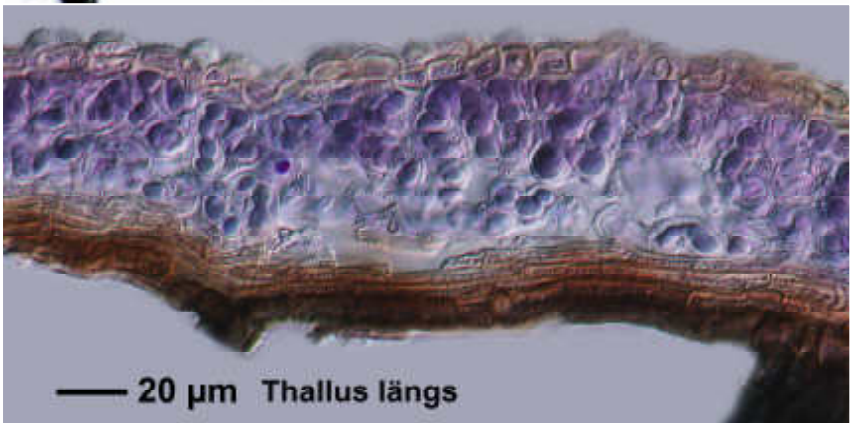
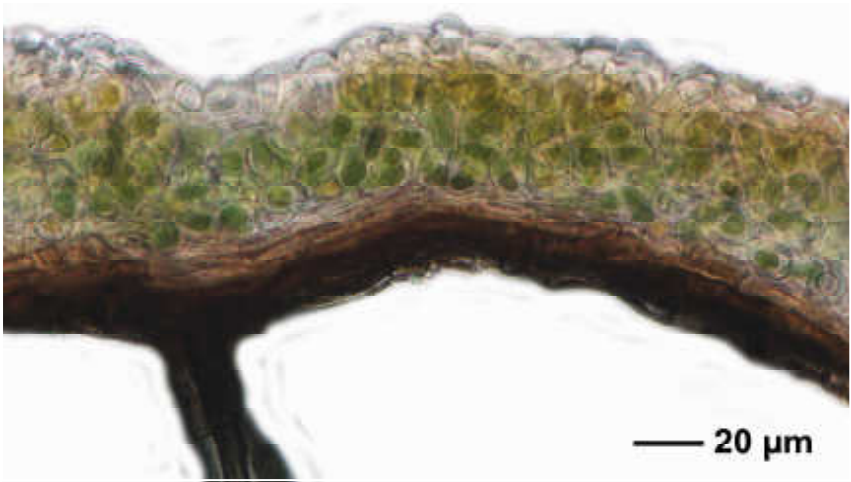
Thallus dark brownish grey. Lobes imbricate, not pruinose, usually \pm shining, without isidia and traverse concentric ridges. Lower surface creamish to black, rhizinate. Spores globose, 8/ascus, 4-5 μm . Chemistry: K-, C-, KC-, P-, UV; TLC: nil.

[15267], La Reunion, Takamaka, feuchte waldige Felshänge bei der Elektrostation; 21,09105° S, 55,61998° E, 800 m. Leg. Schumm & Frahm 10.09.2009, det. P.M. Jorgensen 2009.





*Coccocarpia
imbricascens*



Coccocarpia imbricascens