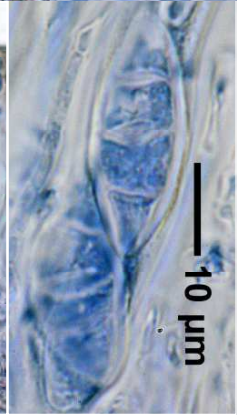
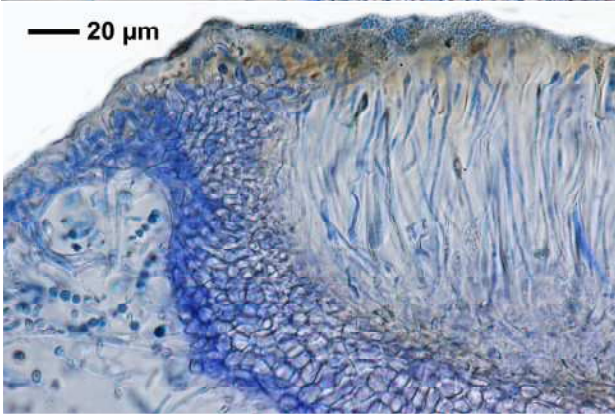
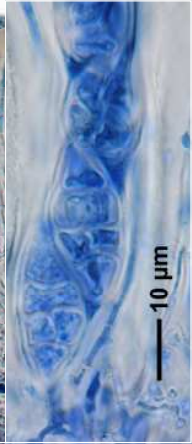
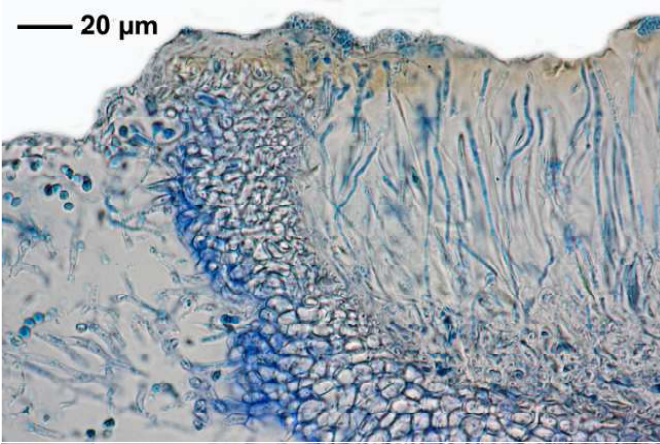
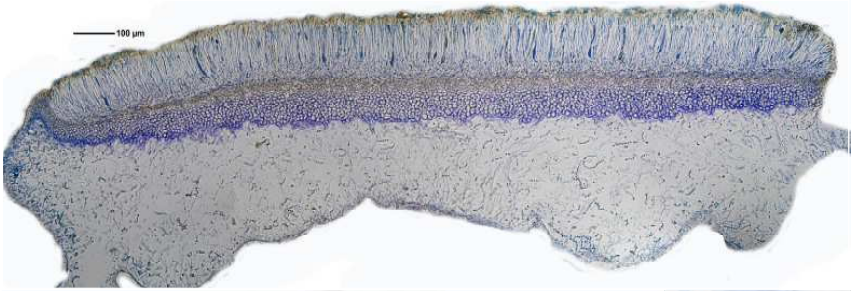


Collema cristatum (L.) Weber

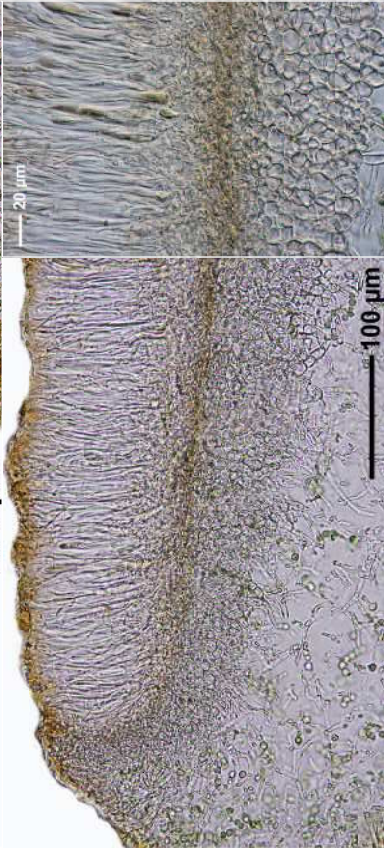
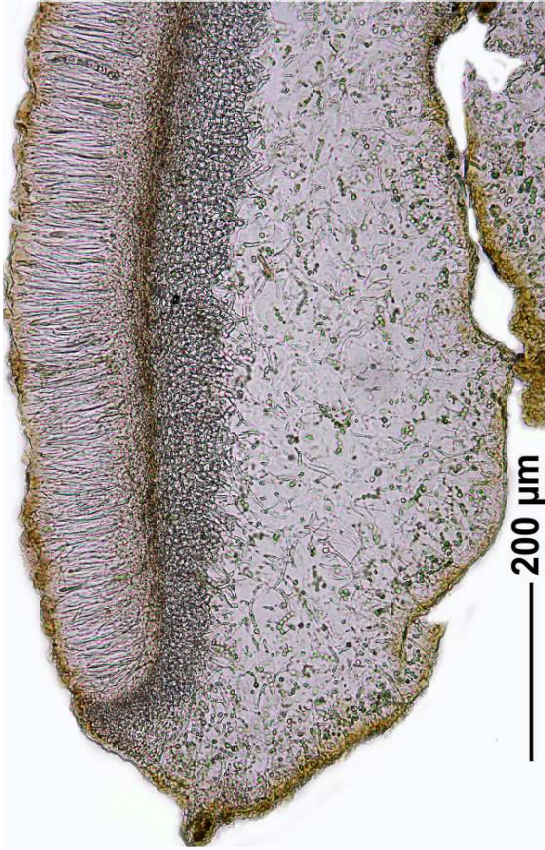
Thallus 2-5 cm, tief gelappt, Lappen bis 3 mm breit. Thalluszentrum mit senkrecht stehenden, stark welligen Lappenrändern, am Thallusrand Lappen konkav und rinnig. Excipulum euparaplectenchymatisch. Sporen submuriform, 3-Querwände und (0-)1(-2) Längswände, ellipsoidisch mit etwas zugespitzten Enden, 18-32 x 3-13 μm .

[16506], Germany, Baden-Württemberg, Kreis Göppingen, Gosbach-Bad Ditzenbach, Tierstein, 48,57461° N, 9,68471° E, 737 m, auf Kalkfelsen am Albrand. Leg. et det. Schumm 20.06.2010.





Collema cristatum



Collema cristatum