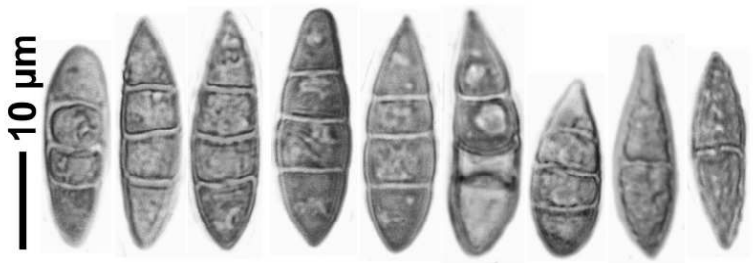
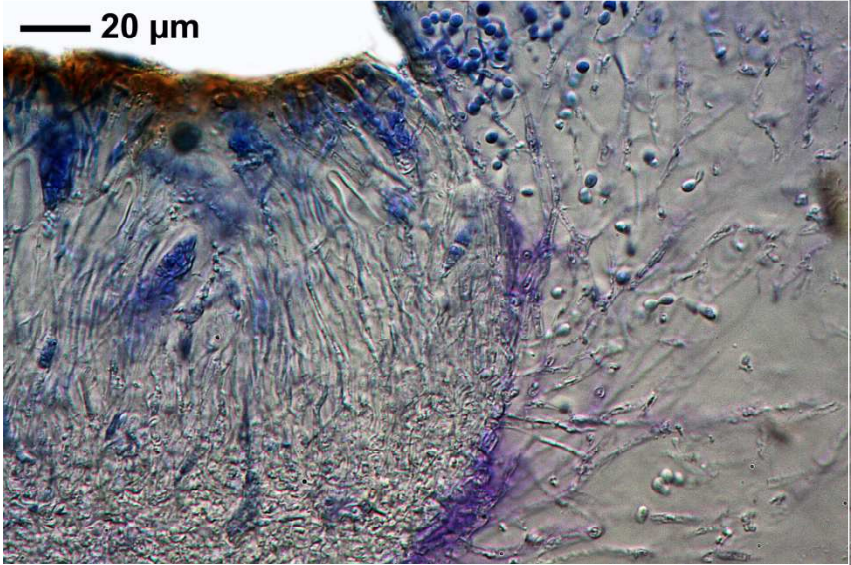
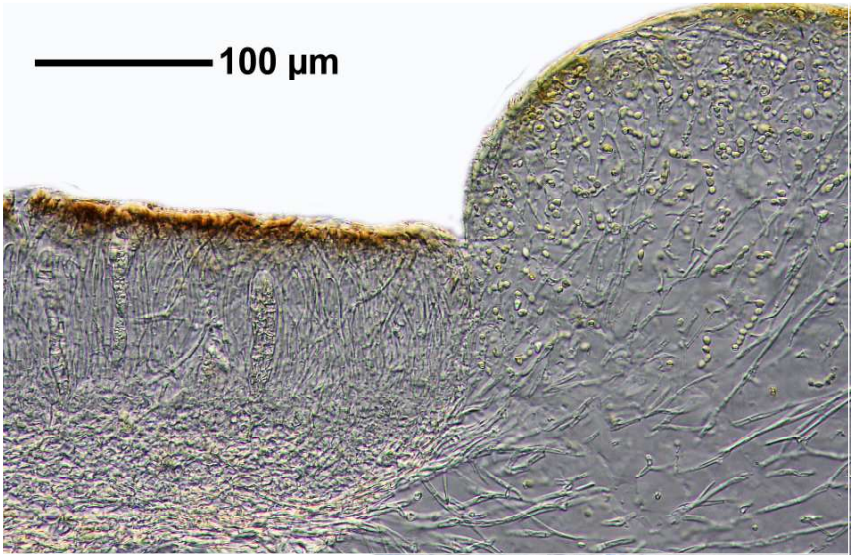


Collema polycarpon Hoffm.

Excipulum nicht zellig sondern euthyplectenchymatisch. Sporen ca. 19-25 x 5-8 μm .

[16576], Germany, Baden-Württemberg, Kreis Esslingen, Neuffen, an Mauern der Ruine Hohenneuffen, 48.55492° N, 9.39356° E, ca. 710 m. Leg. et det. Schumm 12.08.2010.

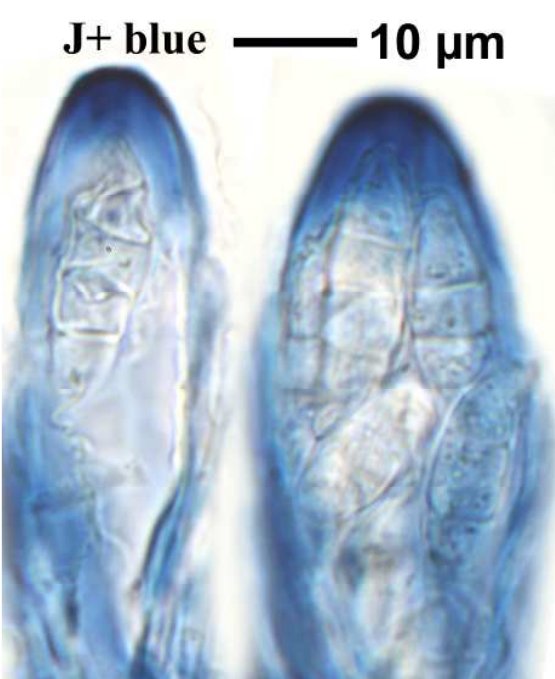
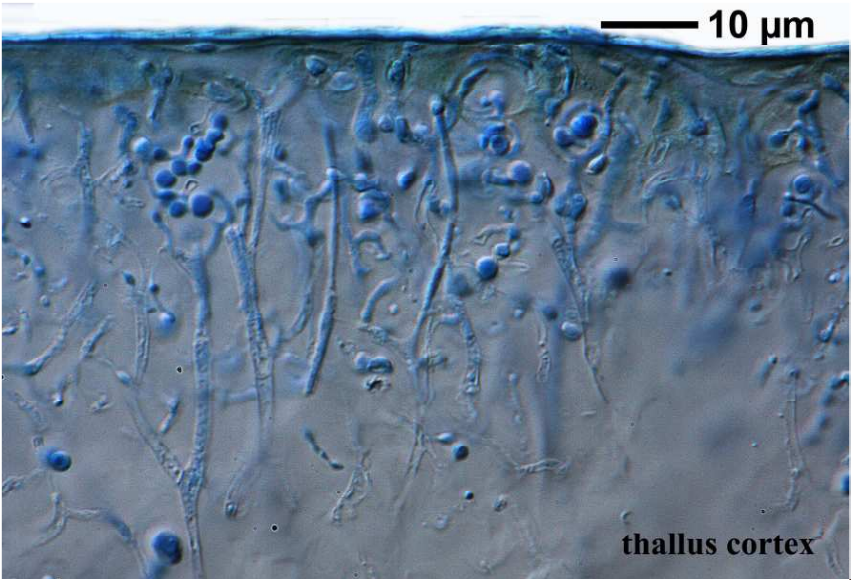




Collema polycarpon



Collema polycarpon



Collema polycarpon