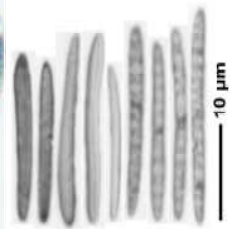
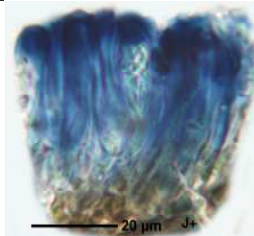


Crustospathula macrocarpa
Aptroot & Schumm

Sporen hyalin, stäbchenförmig, 8/ascus, 1-zellig (nach Aptroot auch selten 3-septiert), 17-22 x 2 μm; Hymenium ca. 58 μm, im unteren 1/4 gelb;

Hypothecium braun-orange, ca. 27 μm; Ap.-Rand voller feiner Kristalle
Lit.: Aptroot, A., *Tropical Bryology* 14: 25-34.



[7478], Philippines, Negros.