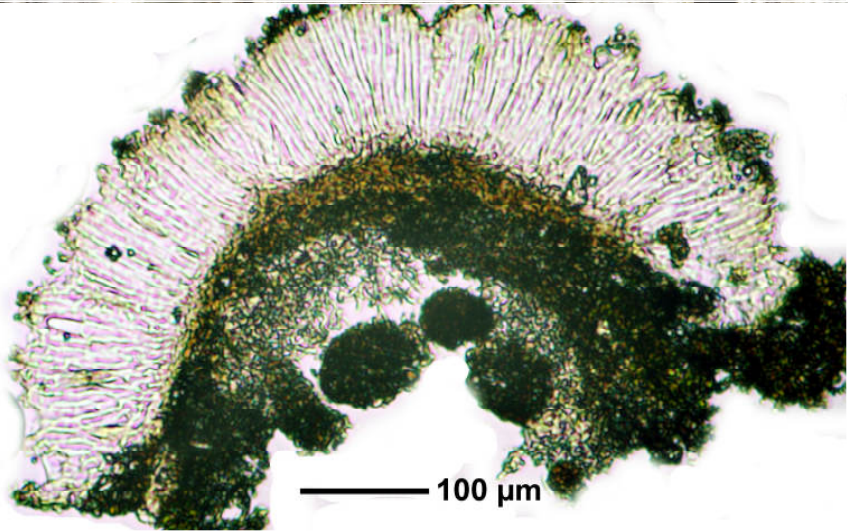
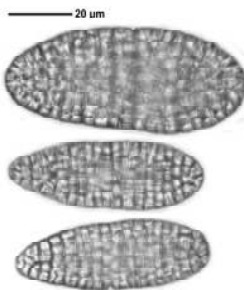
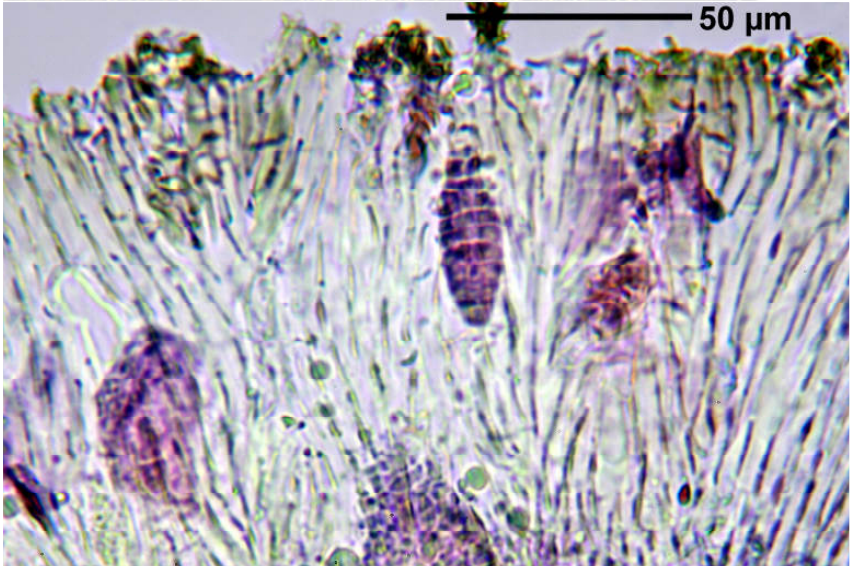
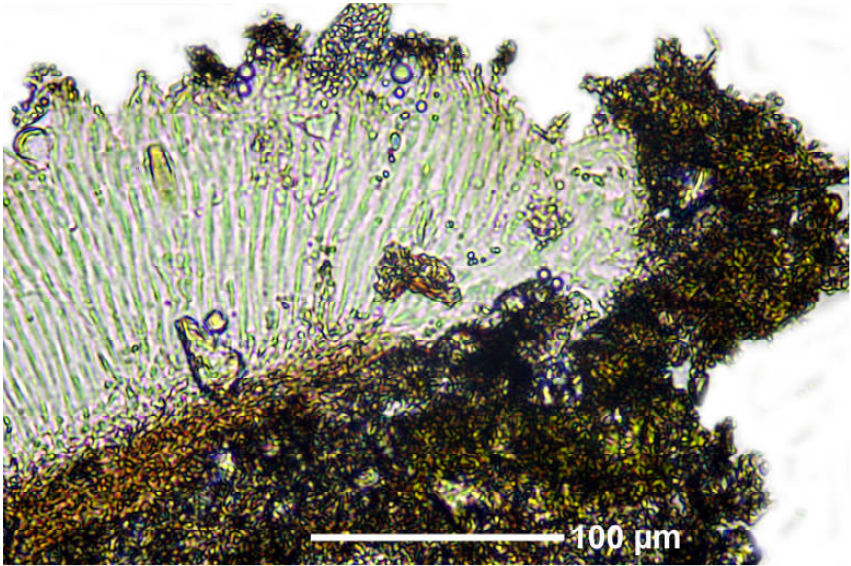


*Diorygma junghuhnii* (Mont & v.d.Bosch) Kalb, Staiger & Elix

Spores hyaline, muriform, (63-) 90-110 x 25-35  $\mu\text{m}$ , I+ bluish black. Excipulum not carbonized. Thallus K+yellow>red, norstictic acid. Pan-tropical.

[14476], Seychelles, Praslin, zwischen St. Maries Point und Anse Lazio, ca. 4°18.288' S, 55°41.388' E, ca. 0-250 m. Leg. Schumm & Frahm 01.10.2008, det. Aptroot 2008.





*Diorygma junghuhnii*