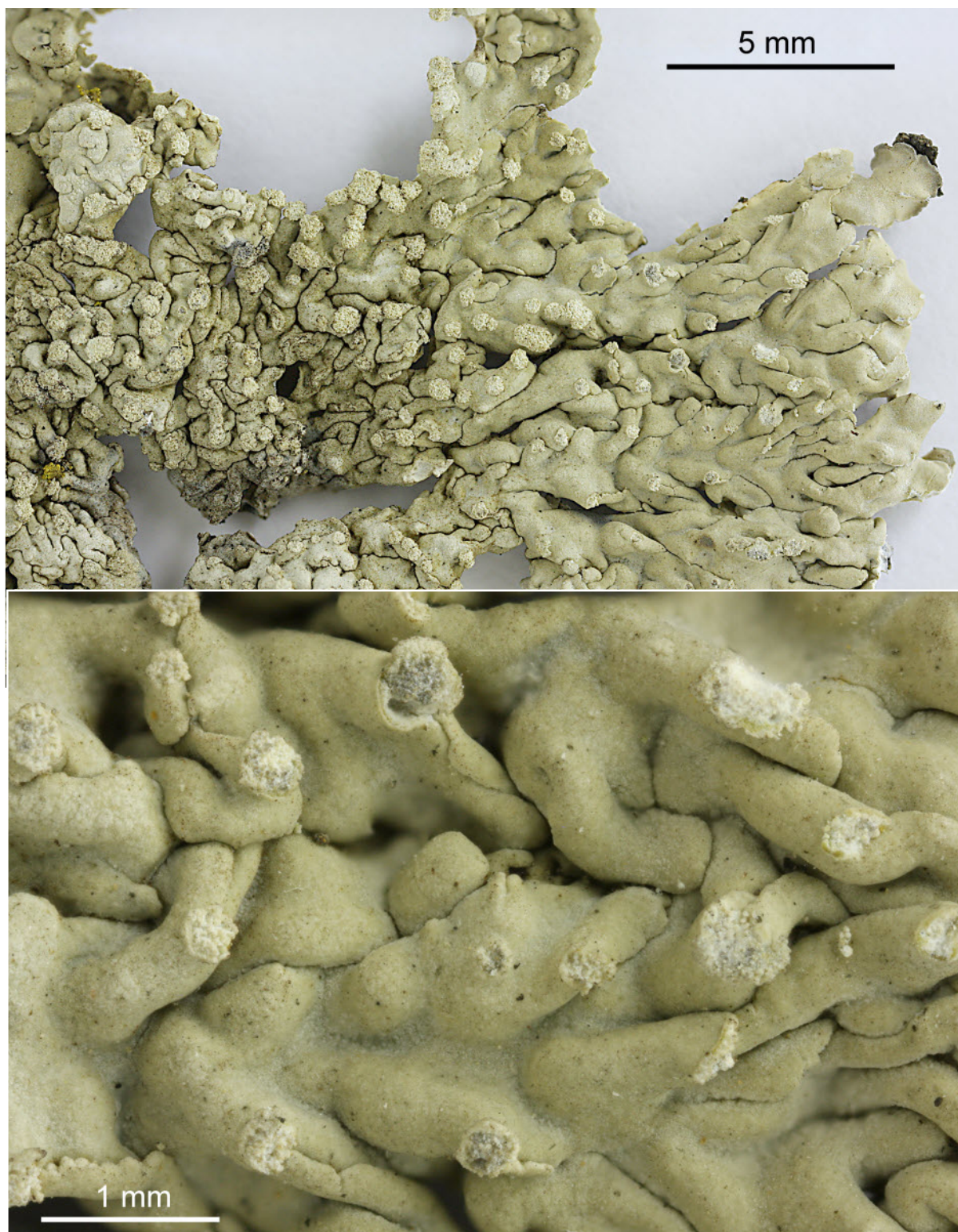
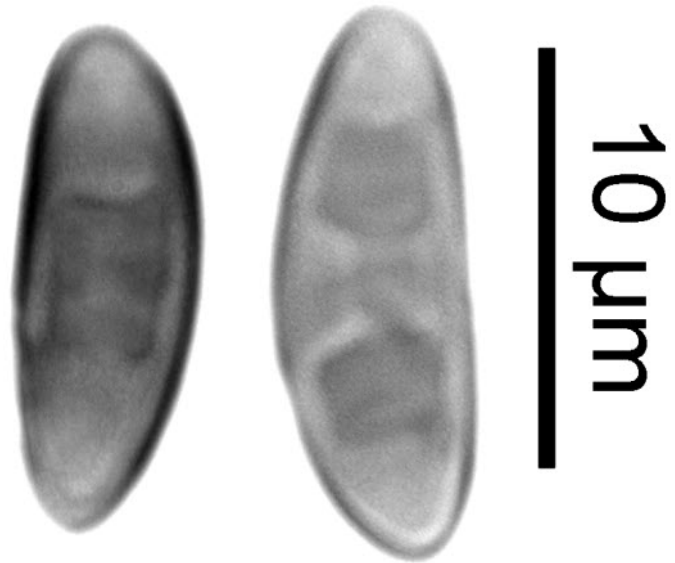
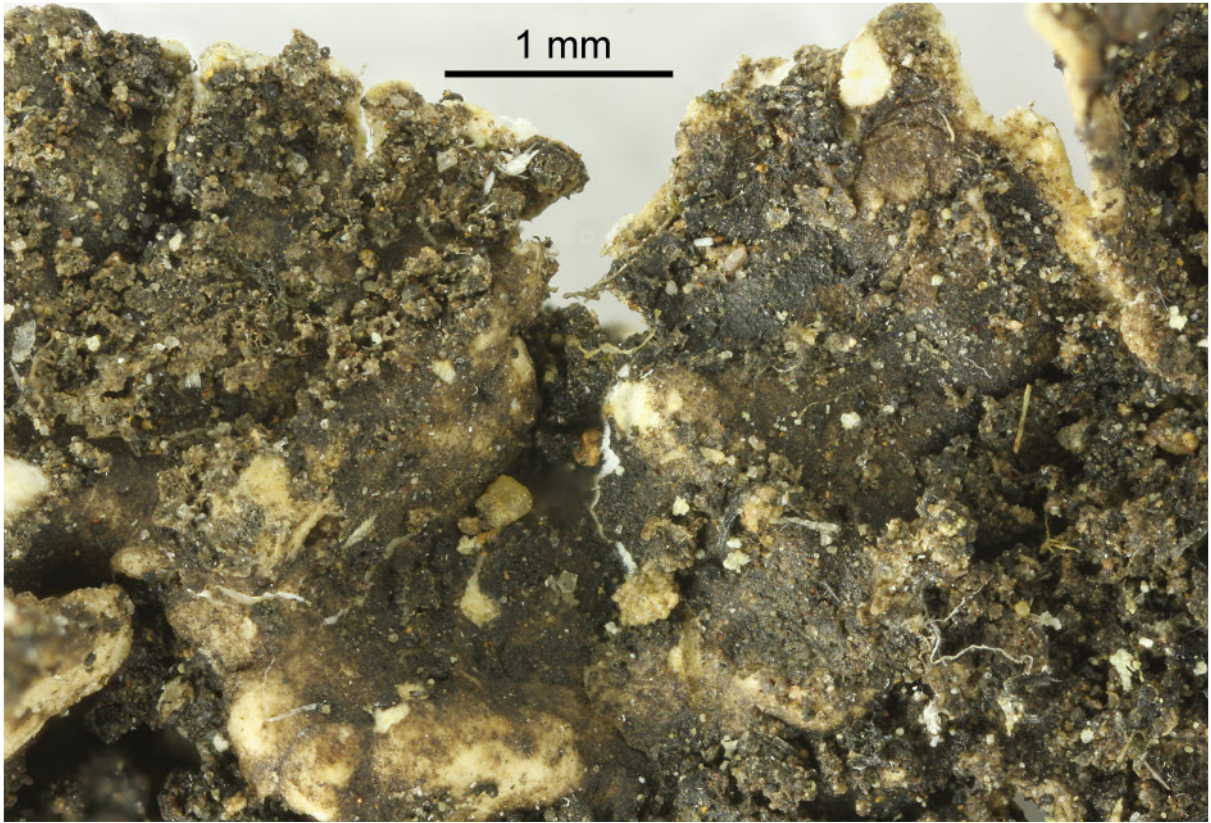


*Dirinaria applanata* (Fée) D.D.Awasthi

Thallus with regular soralia. Lobes confluent, longitudinally plicate, usually > 0.2 mm thick. Chemistry: cortex K+ yellow; medulla K+ yellow, C-, KC-, P-, UV+ white; atranorin, divaricatic acid, 4 terpenoids. Pantropical.

[9549], Thailand: Tempelanlage von Lampang (Wat Lampang Luang). 18°13.061' N, 99°23.316' E, 287 m. Leg. Schumm 29.03.2002, det. Aptroot 2009.





*Dirinaria applanata*