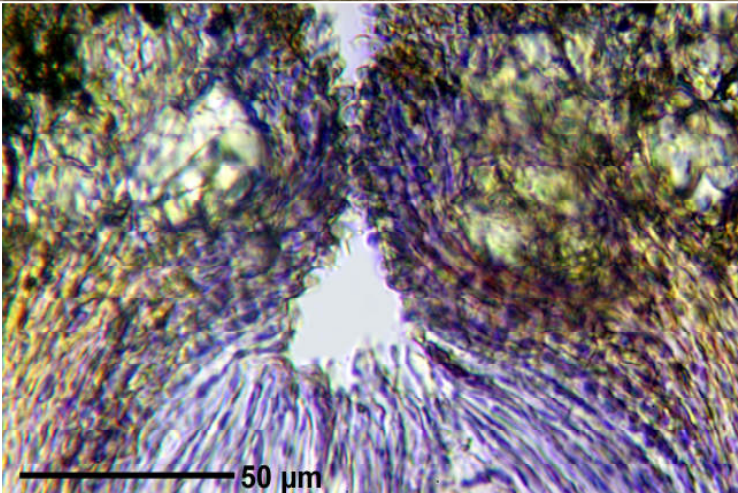
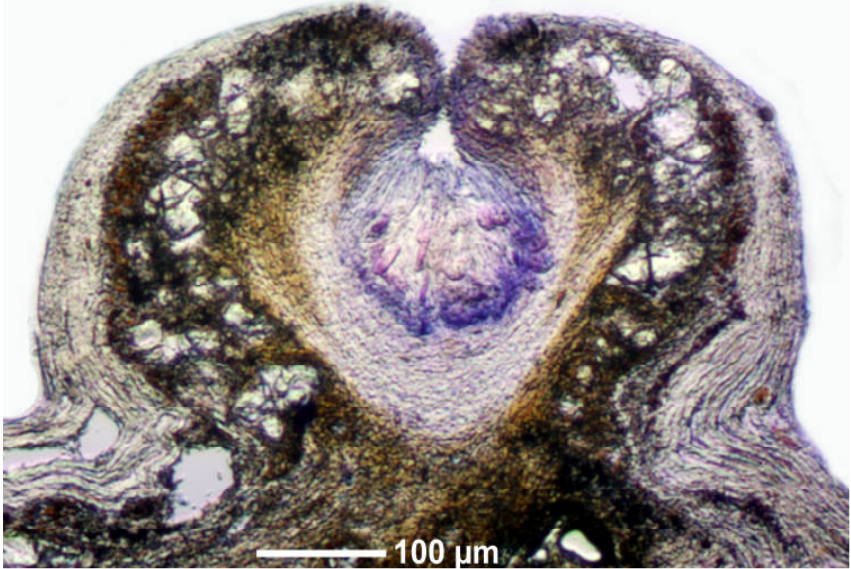
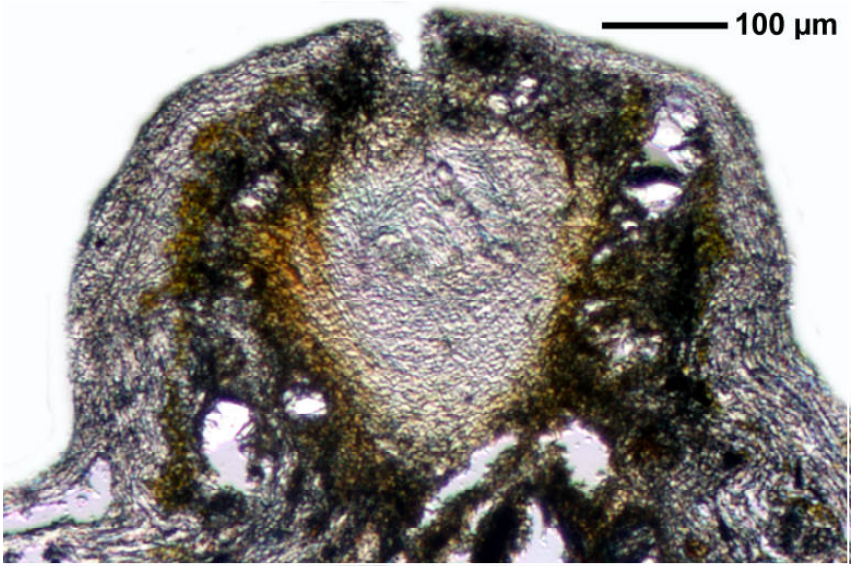


*Fissurina instabilis* (Nyl.) Nyl.  
[= *Graphina instabilis* (Nyl.) Zahlbr.]

Spores globose to subglobose, c. 16-20  $\mu\text{m}$ , c. 8-celled, I+ violet.  
Chemistry: nil or psoromic acid. Pantropical, usually on bark, but on the Seychelles also on granite.

[14597], Seychelles, Mahe, Sentier de Randonnée de Glacis-Trois Frères Nature Trail, 4°38.210' S, 55°26.7968' E, ca. 300-450 m. Leg. Schumm & Frahm 07.10.2008, det. Aptroot 2008.





*Fissurina instabilis*