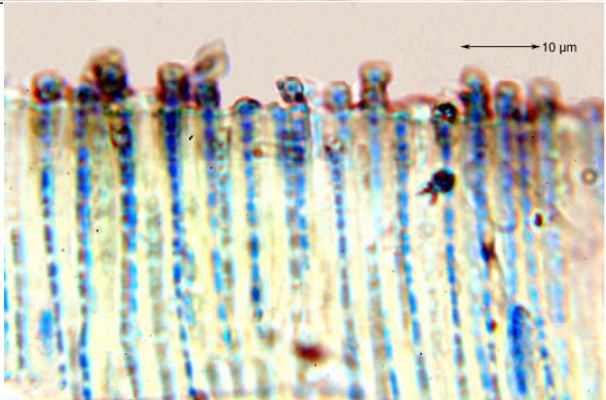
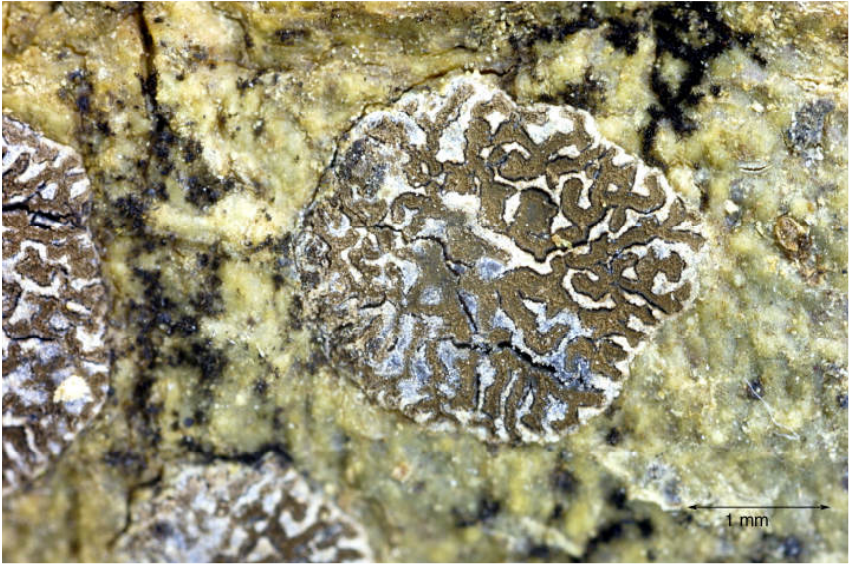
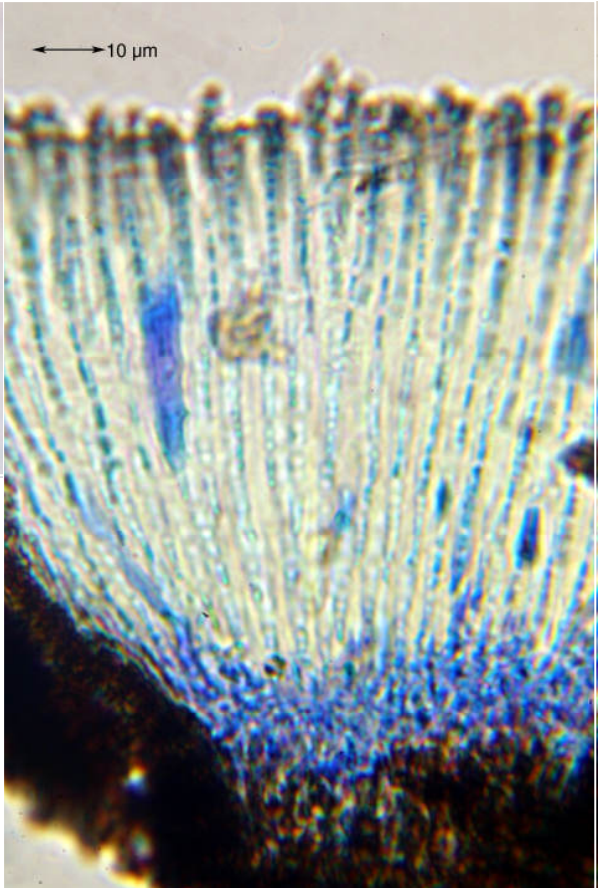
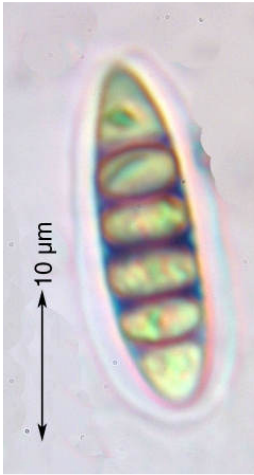
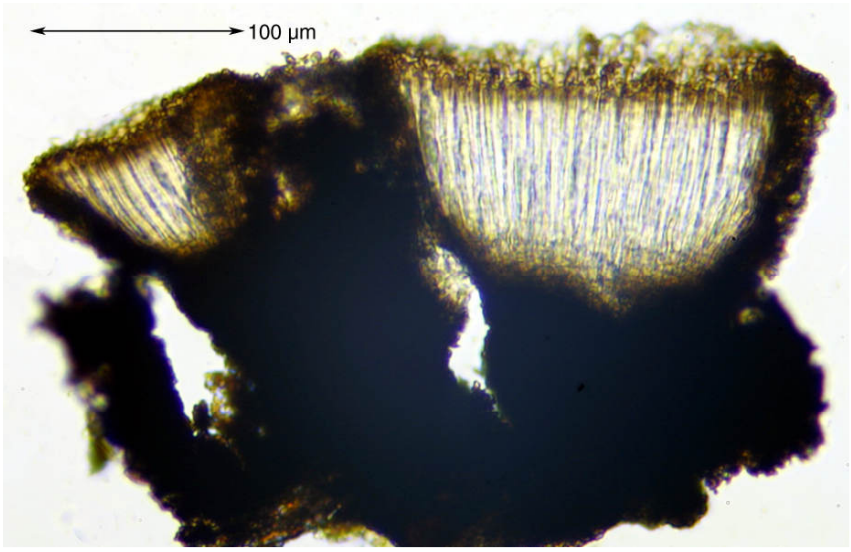


Glyphis cicatricosa Ach.

Thallus yellowish grey, smooth. Apothecia irregularly shaped, in a conspicuous cushion forming, internal carbonaceous stroma. Hymenium hyaline, not inspersed, 70-100 μm . Paraphyses nearly not branched, tips stand out of the hymenium. Spores 5(-11) septate, young halonate, 23-45(-60) \times 7-10 μm , lumina rounded, septae with I+ black blue. Chemistry nil. Corticolous. Pantropical.

[12159], USA, Louisiana, East Baton Rouge Parish. On bark of *Carpinus caroliniana* & *Osmanthus*, Bottomland hardwood forest, Burden Plantation, Essen Lane, Baton Rouge. 30°24'30"N, 91°06'45"W. Leg. et det. Shirley C. Tucker 19. Feb. 1974 (Nr. 11940).





Glyphis cicatricosa