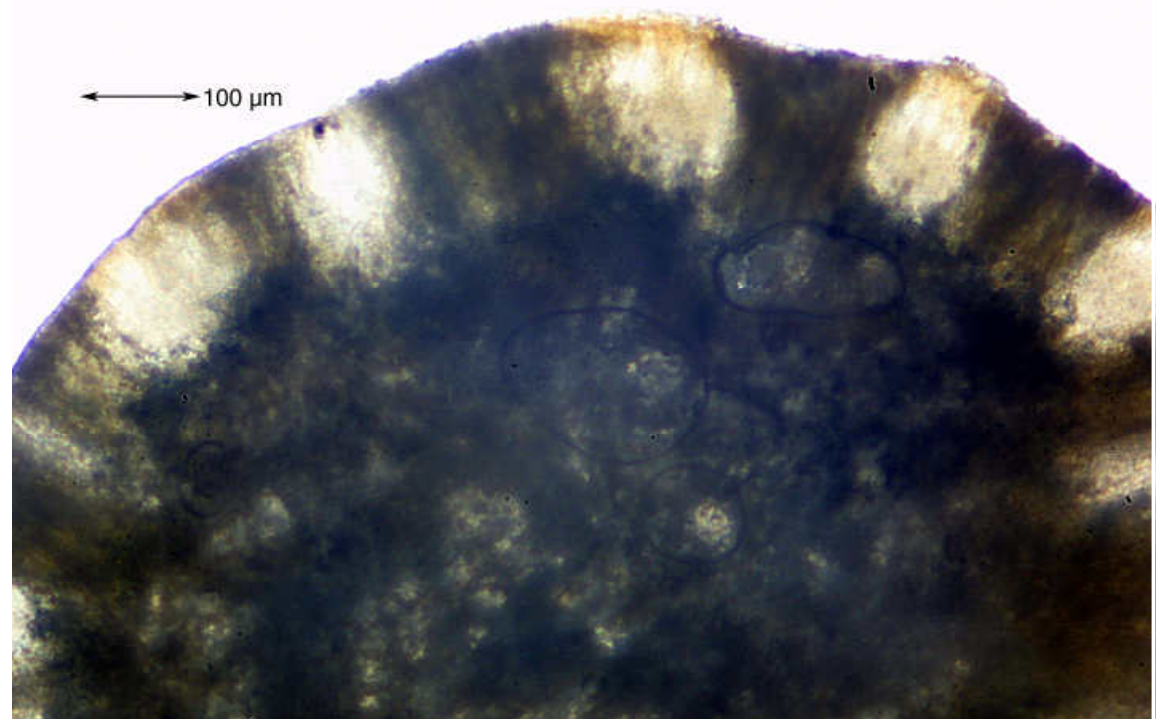
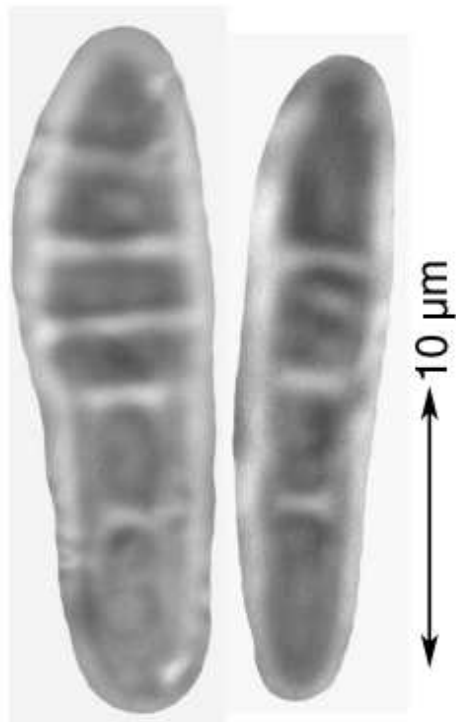
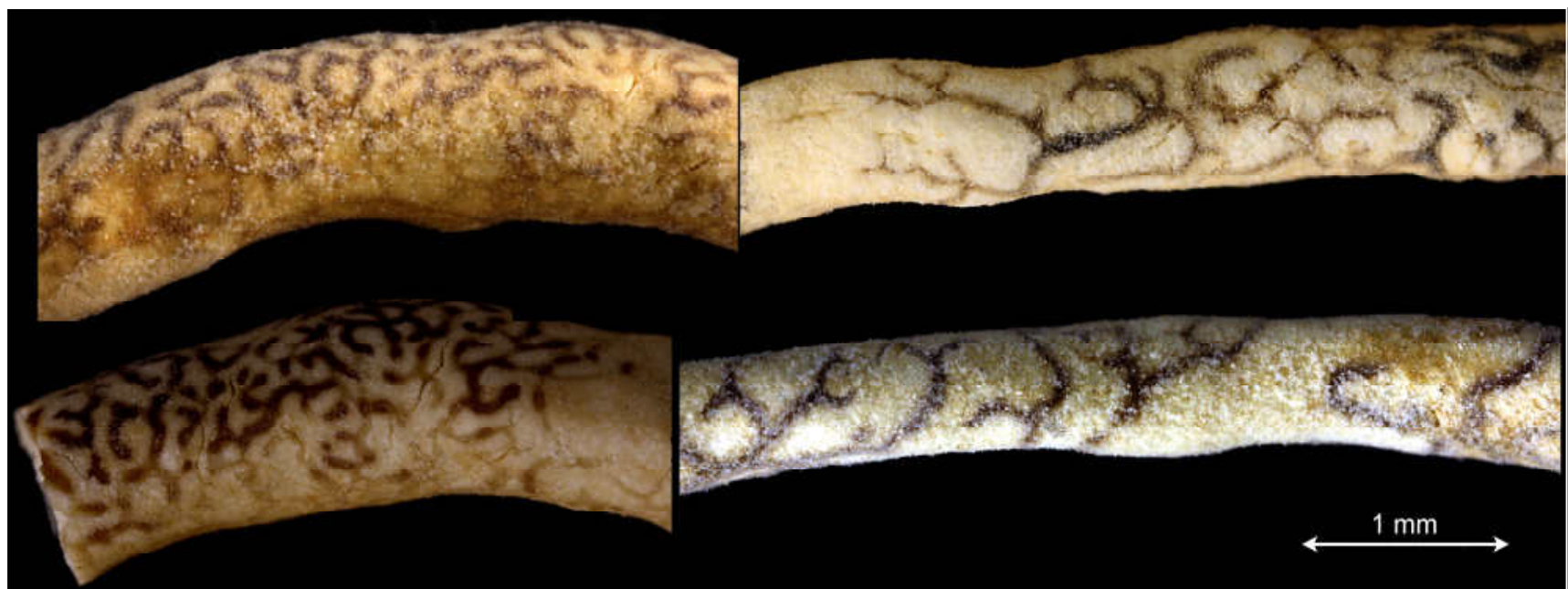
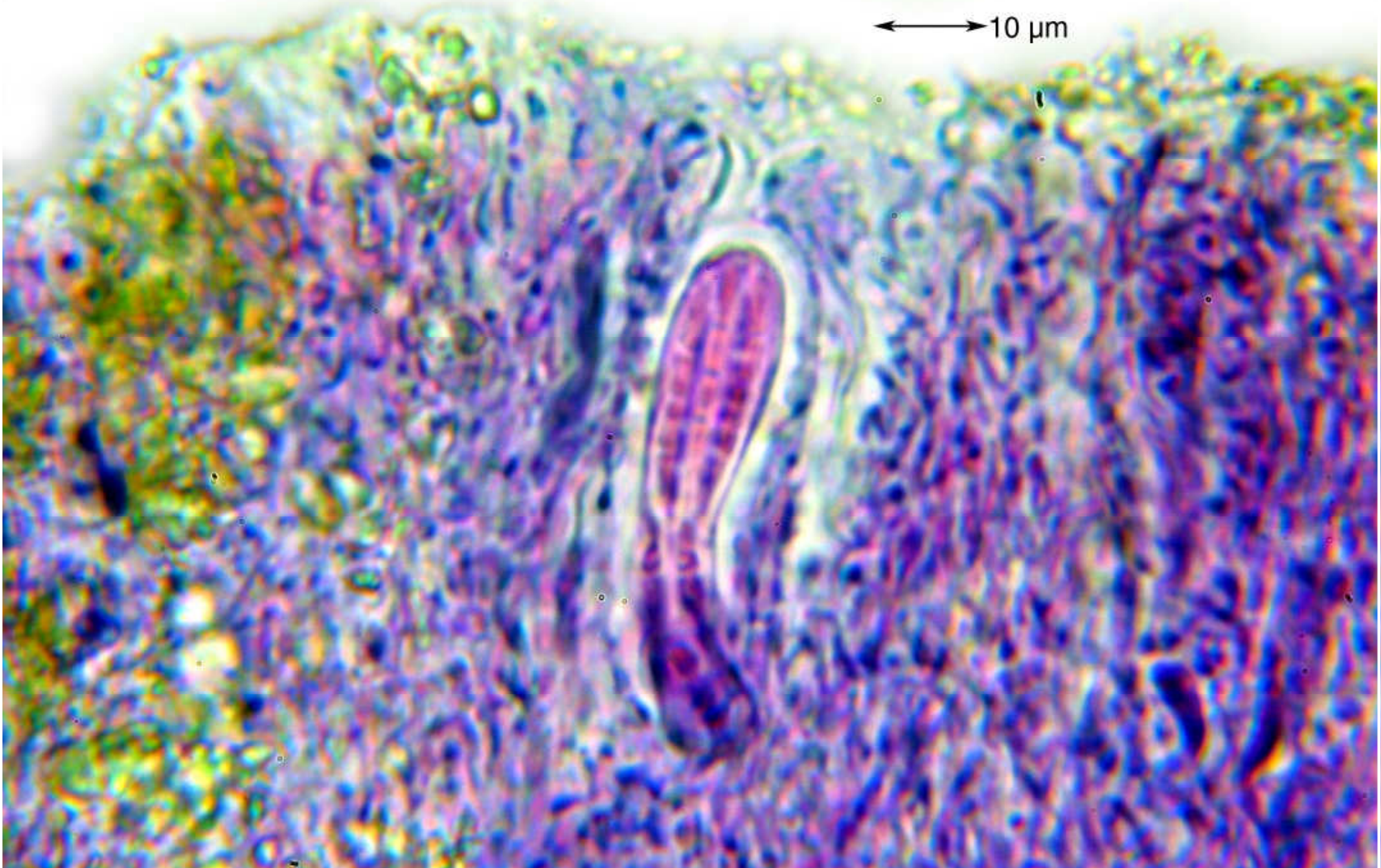
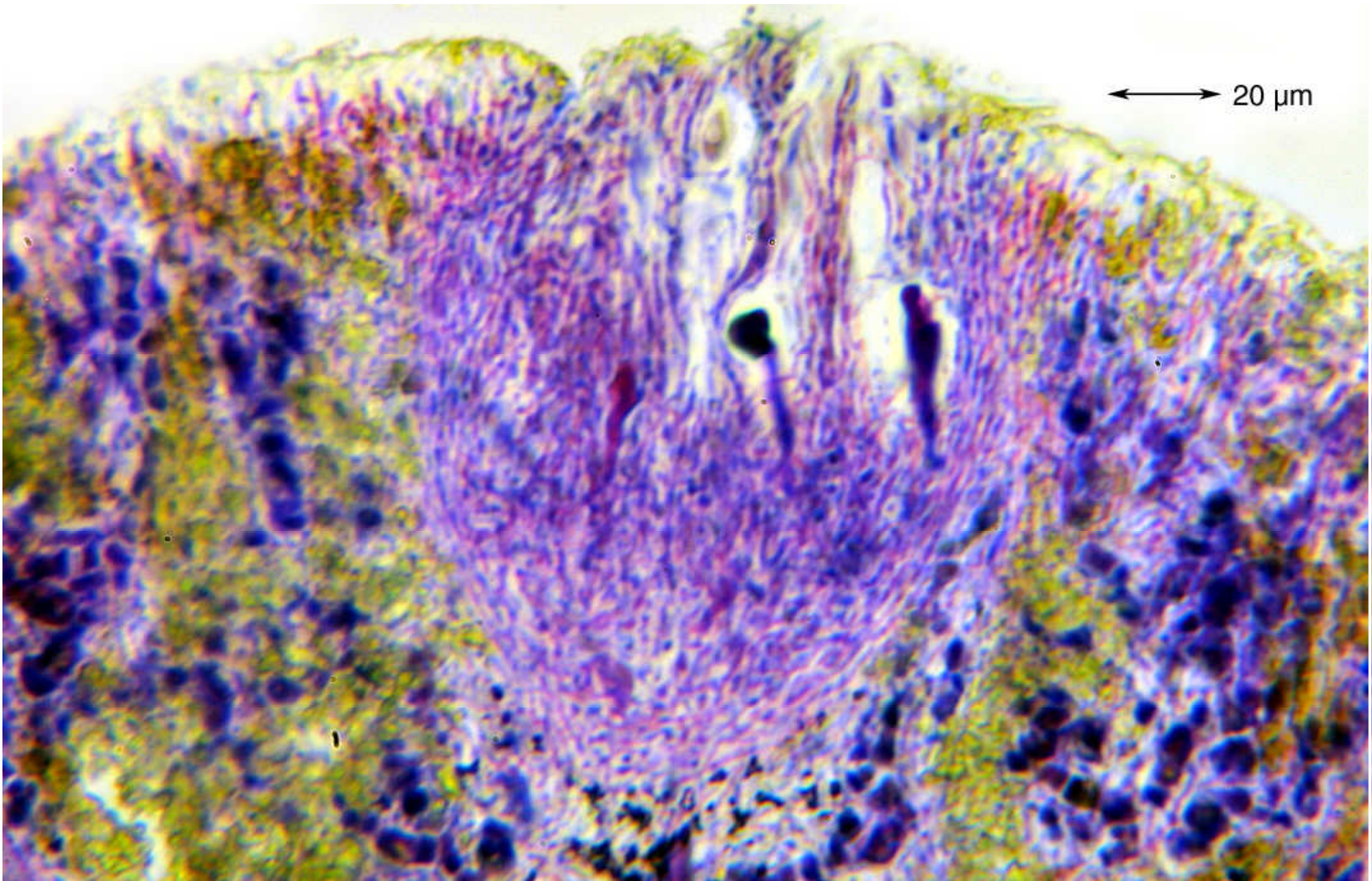


Gorgadesia mira Tav. (1964)

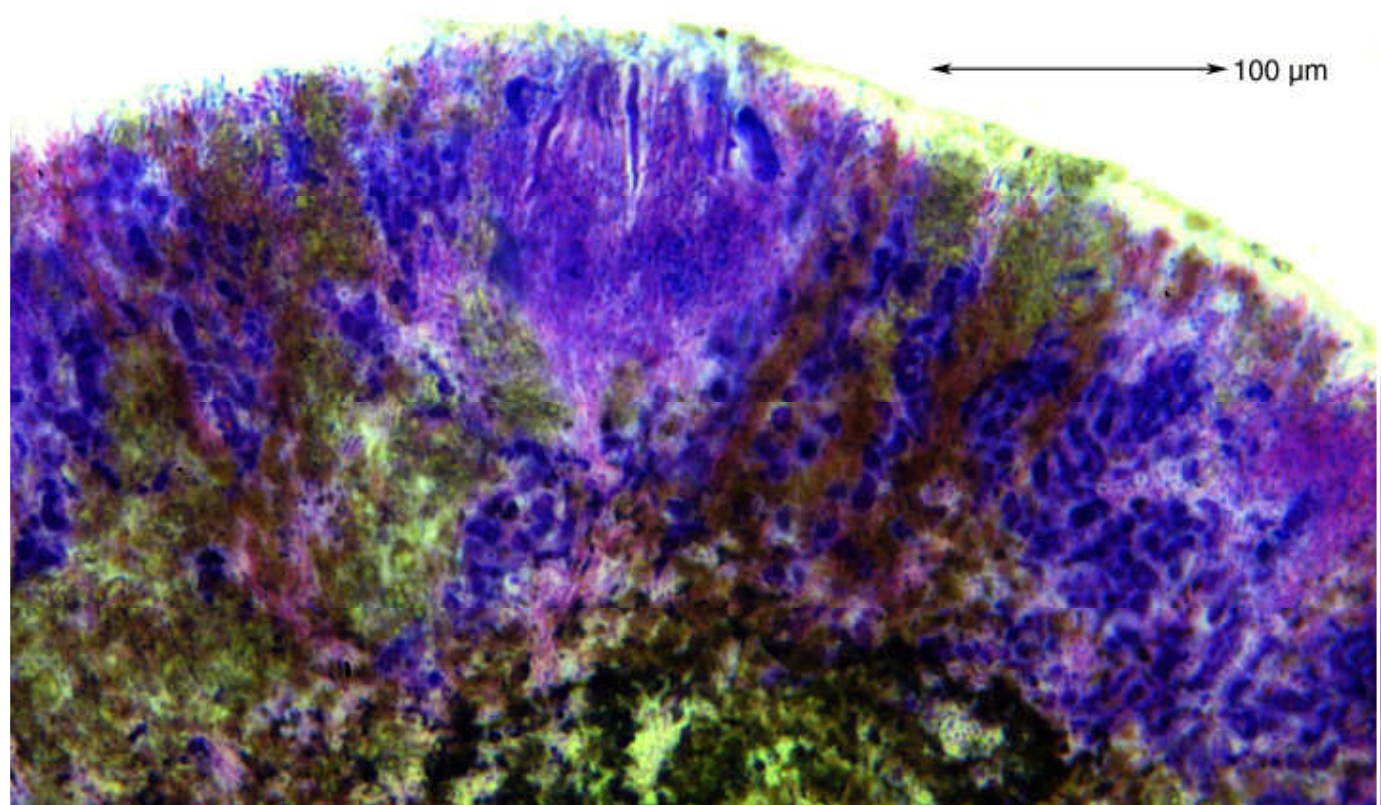
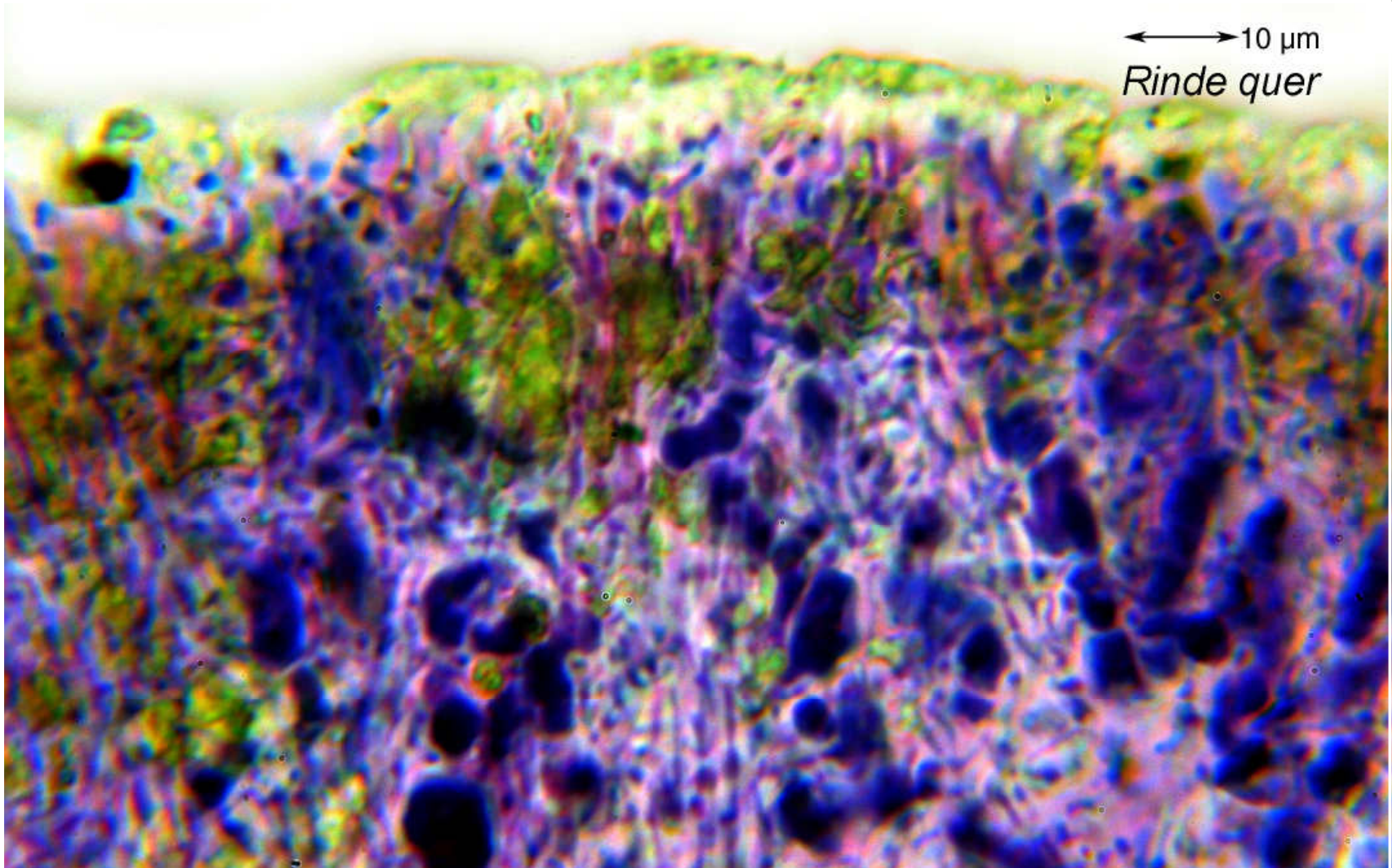
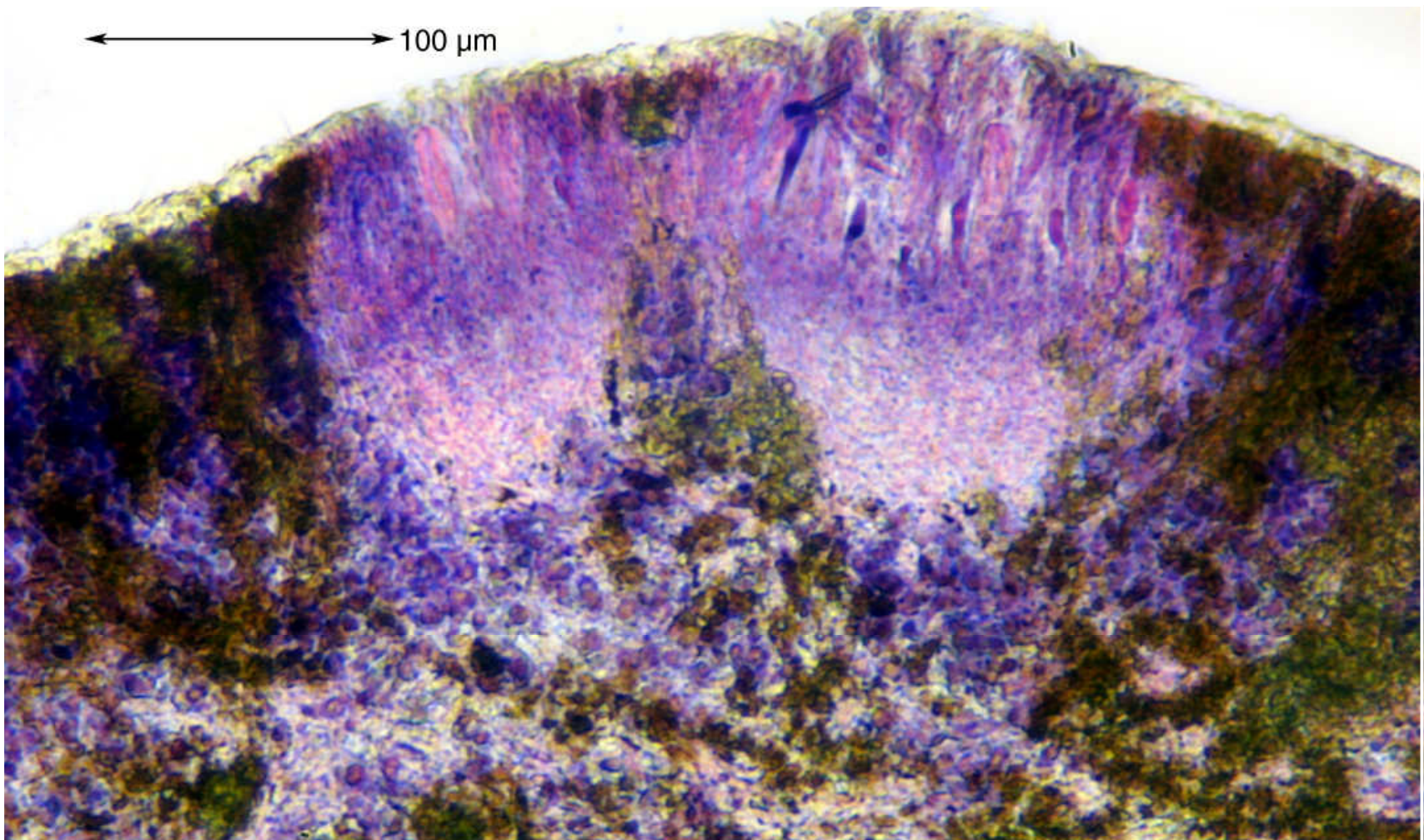
Thallus saxicolous, brown, not sorediate, texture firm, lobes cylindrical, 0.5-1 mm thick, surface smooth, holdfast internally white to brown. Cortex intermediate type, with thick epinecral layer. Apothecia linear, branched. Hypothecium hyaline. Ascospores hyaline, 3–5-septate, $16\text{--}29 \times 3\text{--}5 \mu\text{m}$. Cortex K –, C –, KC –, Pd + yellow, medulla C –, major substance psoromic. – Cape Verde Islands.

Cape Verde Islands. Sao Nicolau, Ponta Espechim, W of Ribeira Funda, N Coast, on base of moist rockwall, exp. N, alt. 280 m. Chemistry by HPLC: Psoromic acid, 2 unknown minor compounds. Leg. Bruno Mies 28.Sept. 1988 (Nr. CV 4293). Ex Alborn: Lichenes africana No. 132. Lit. Tavares (1964). [ALA 132]





Gorgadesia mira



*Gorgadesia
mira*