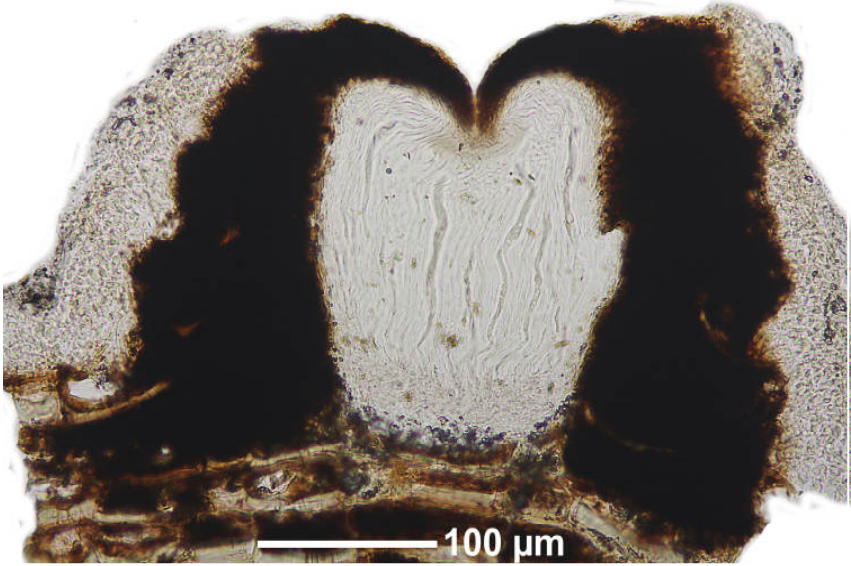


***Graphis cleistoblephara*** Nyl. (1863)  
[= ***Graphina cleistoblephara*** (Nyl.) Zahlbr.]

Thallus grey, dull. Lirellae short, sessile, boat like, unbranched, straight, c. 1 x 0.5 mm. Excipulum laterally carbonized, at the base thin and not carbonized. Hymenium 170-180  $\mu\text{m}$ , not inspersed. Ascospores (1-)2-4/ascus, hyaline, muriform, 80-130 x 13-23  $\mu\text{m}$ , J+ blue-violet. Chemistry: norstictic acid. Lit. Staiger (2002, p. 222)

[2801], Hong Kong, New Territories: gesellig an glattem, lebendem oder abgestorbenem Astwerk im lichtoffenen Kronenteil kleinerer Laubbäume im *Graphidion scriptae* Ochns., 300 m, SO, pH 6,5, schütterer Hangwald nordwestlich Pak Kong. Leg. et det. S.L. Thower (VIII, 1978). G. Follmann: Lichenes Exsiccati Selecti A Museo Historiae Naturalis Casselensi Editi Nr. 287.

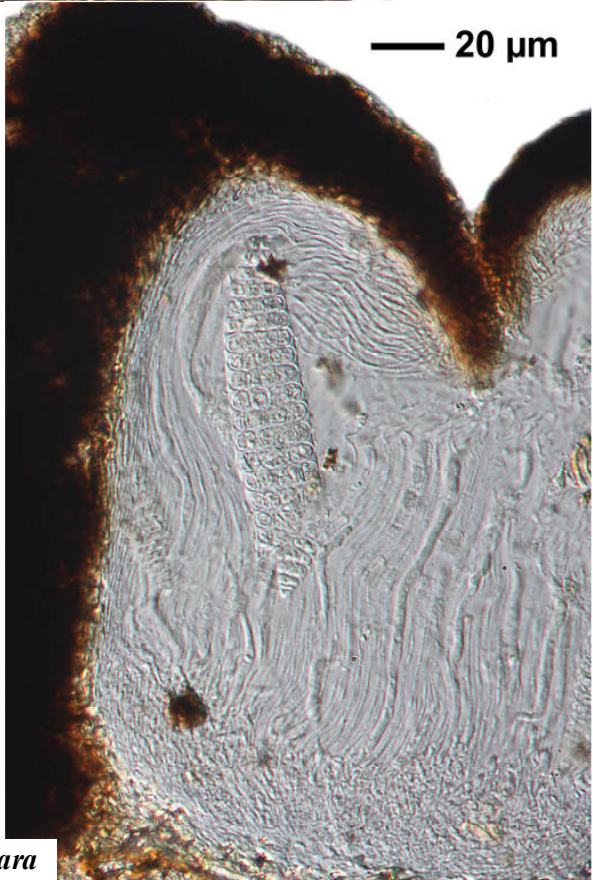




*Graphis cleistoblephara*

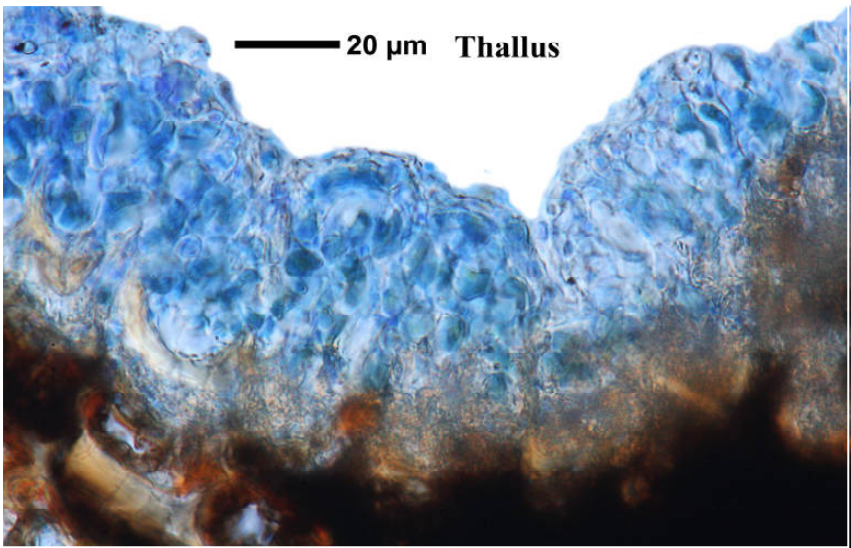
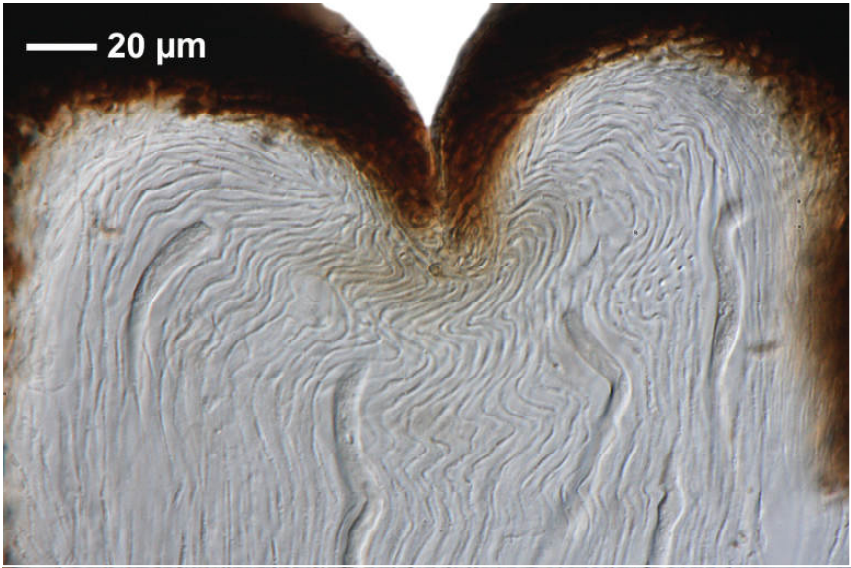


100 μm



20 μm

*Graphis cleistoblephara*



*Graphis cleistoblephara*