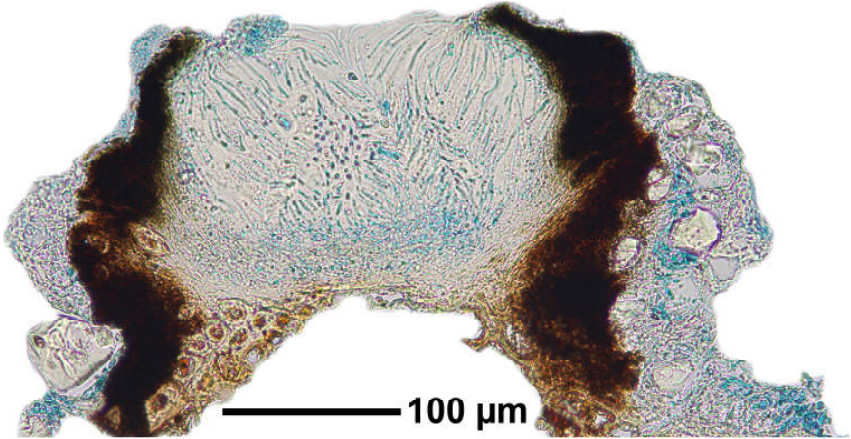
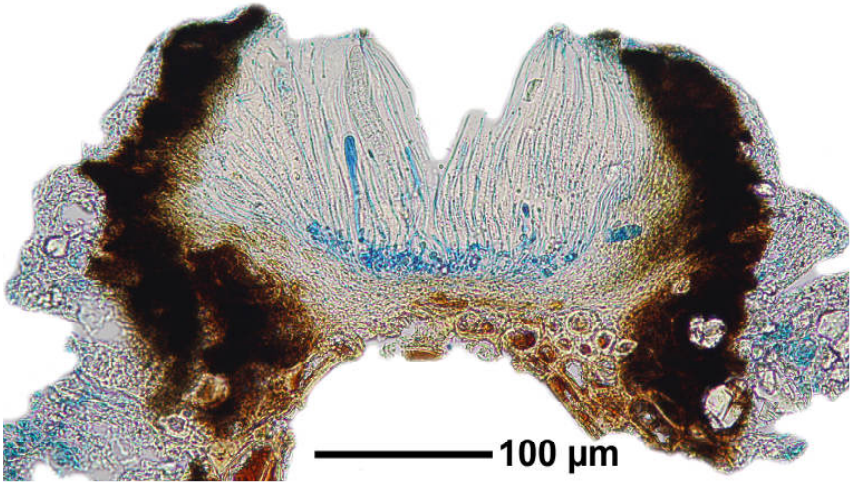
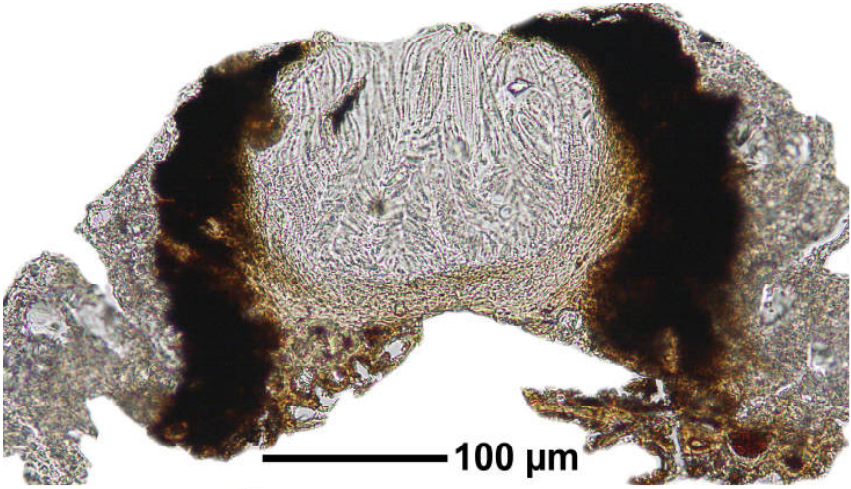


Graphis copelandii Vain.

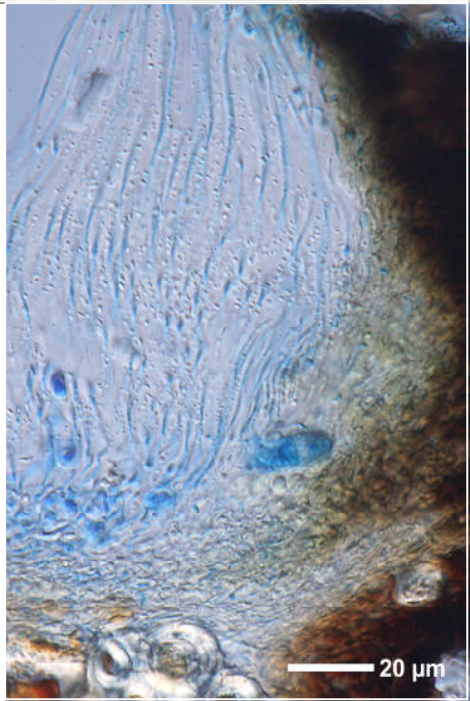
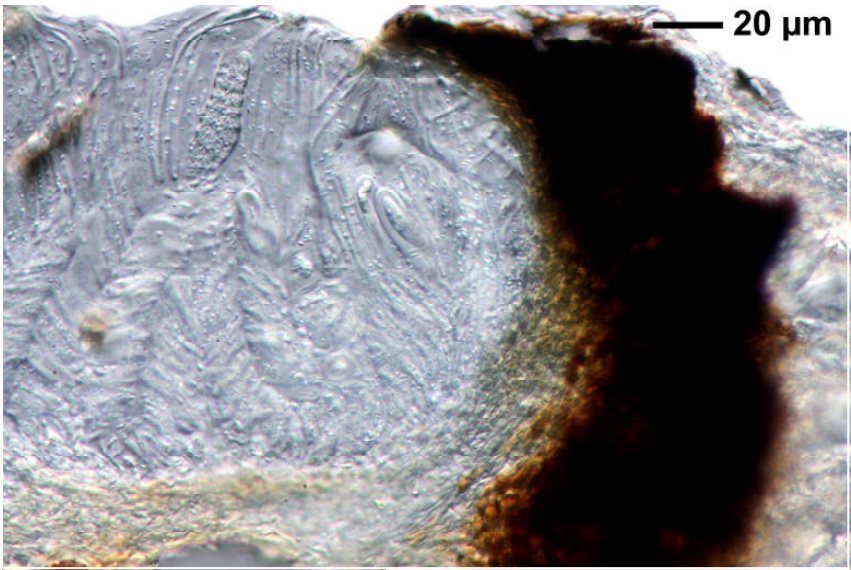
Lirellae immersed to erumpent, with lateral thalline margin. Labia entire, excipulum laterally carbonized, hymenium not inspersed. Ascospores hyaline, muriform, 1(-2)/ascus, 75-113 x 22-23 μm . Chemistry: thallus K+ yellow>red, norstictic acid (TLC).

[7798], Philippinen, Leyte, Prov. Leyte, Weg von Kadwa-An (10°46.249' N, 124°48.167' E, 195 m) nach VISCA (= Visayas State College of Agriculture, 10°44.543' N, 124°47.402' E). Bei 30 m, auf *Cococ nucifera*. Leg. Schumm 19.08.2000, det. Aptroot 2009.

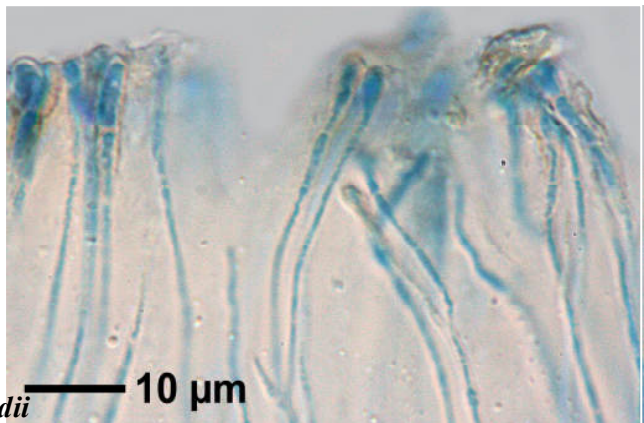
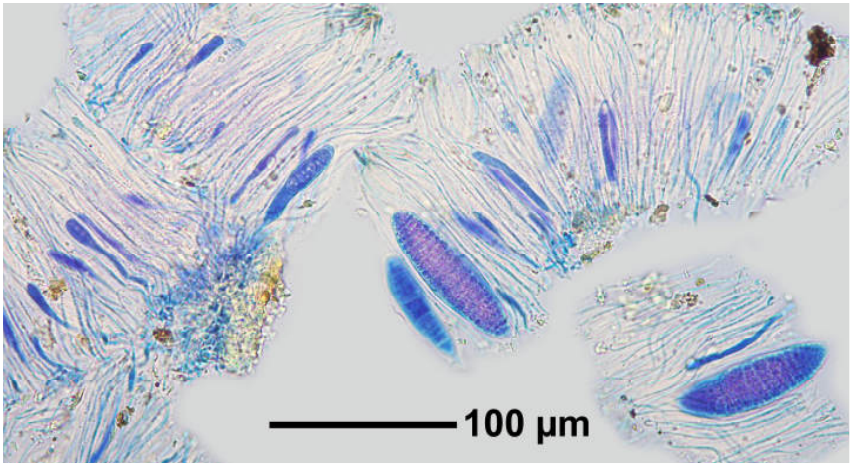




Graphis copelandii



Graphis copelandii



Graphis copelandii