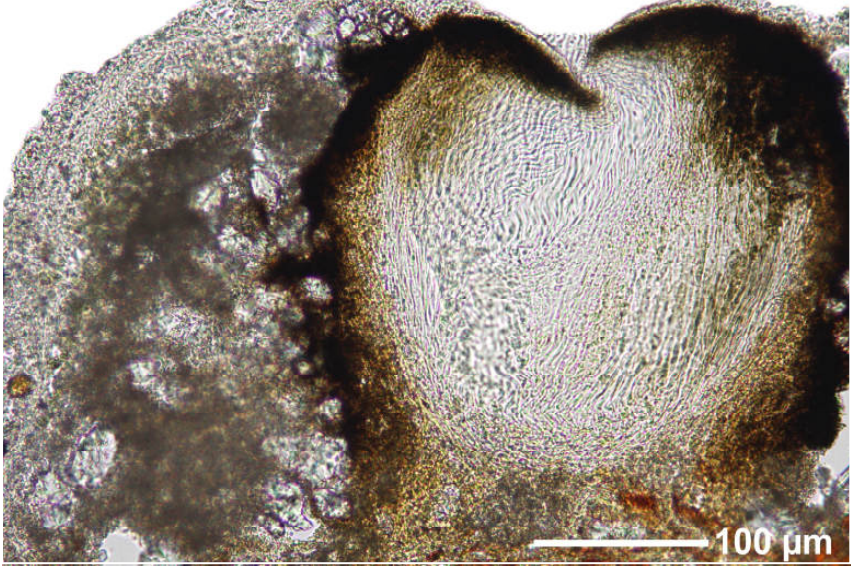
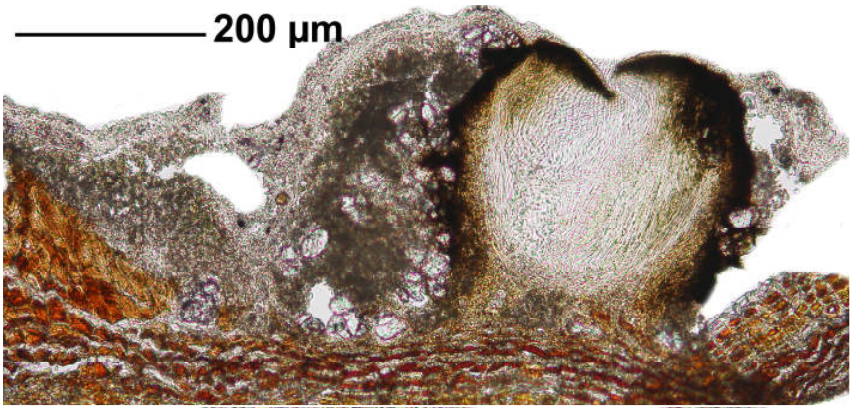


Graphis crassilabra Müll.Arg.

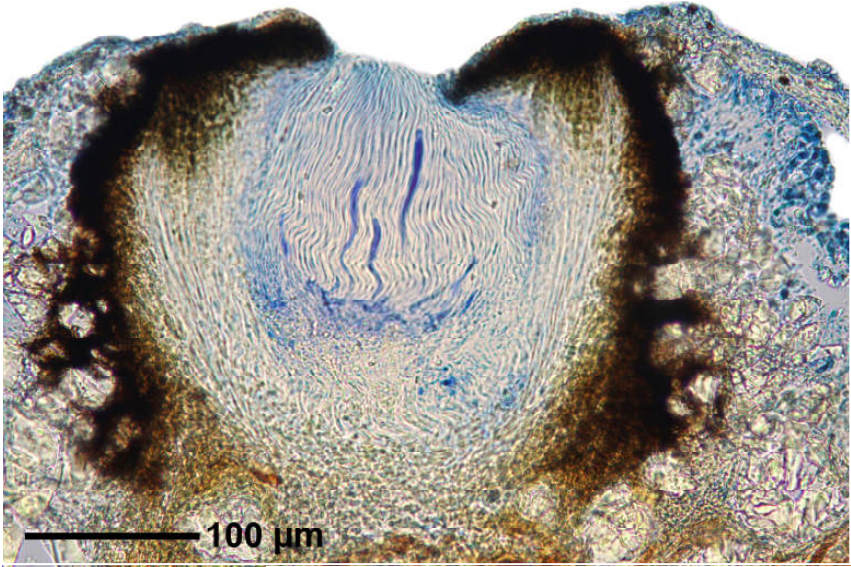
Labia entire, excipulum laterally carbonized. Hymenium not inspersed. Medulla J+ blue-violet. Ascospores hyaline, 8/ascus, transversely septate, J+ blue, (6-)10-14(-15) locular, (28-)45-60(-86) x 7-13(-17) μm . Chemistry: stictic acid. Lit.: Lichenologist 41: 392.

[5889], Philippinen, Mindanao, Province Cotabato, bei Ilomavis an der Straße nach Kidapawan, 07°02.069' N, 125°11.367' E, 730 m. Leg. Schumm 07.08.1999, det. Archer 22.8.2003.

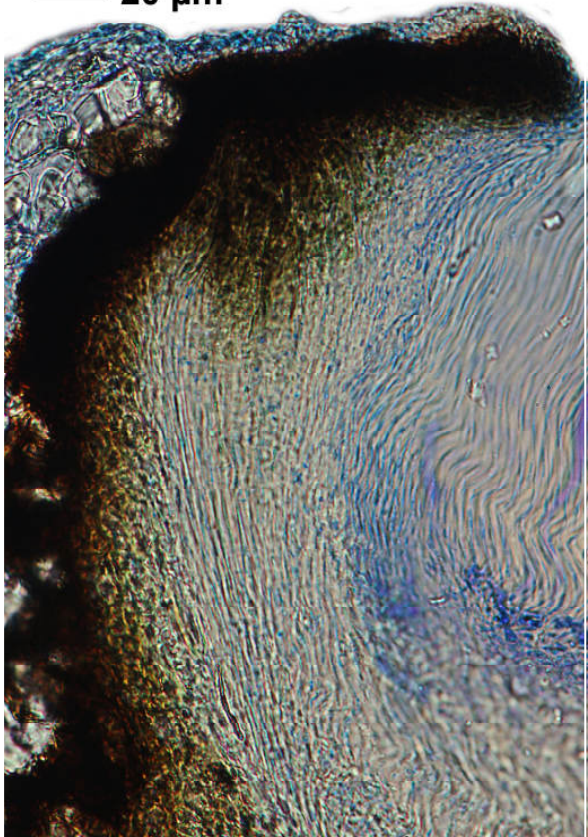




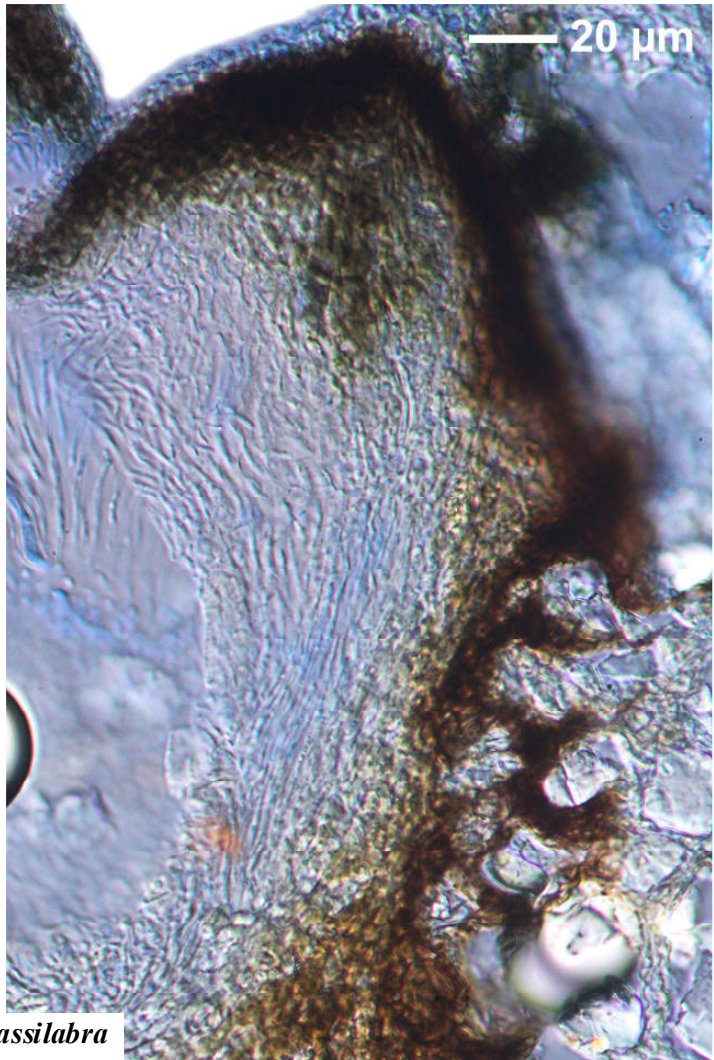
Graphis crassilabra



20 μm



Graphis crassilabra



Graphis crassilabra