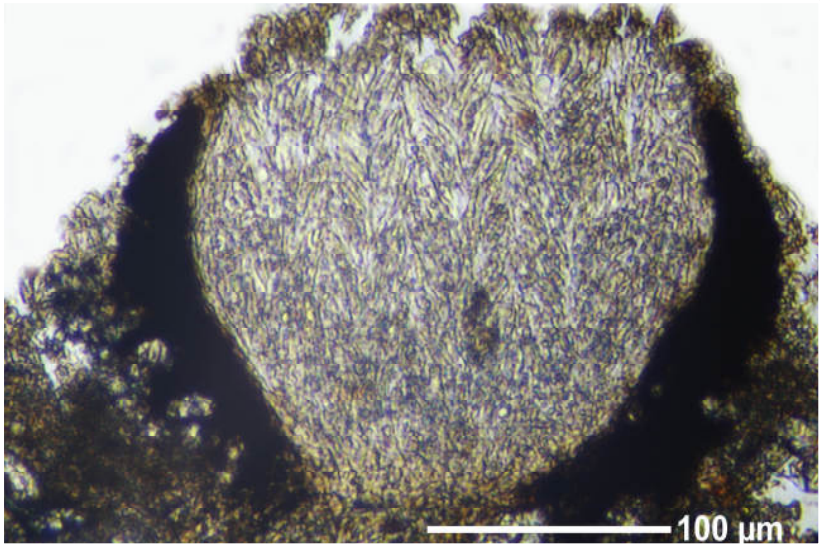
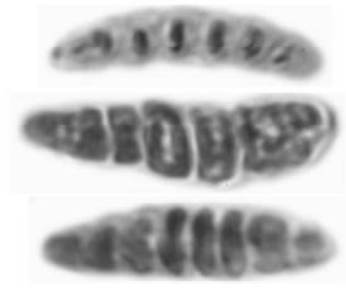
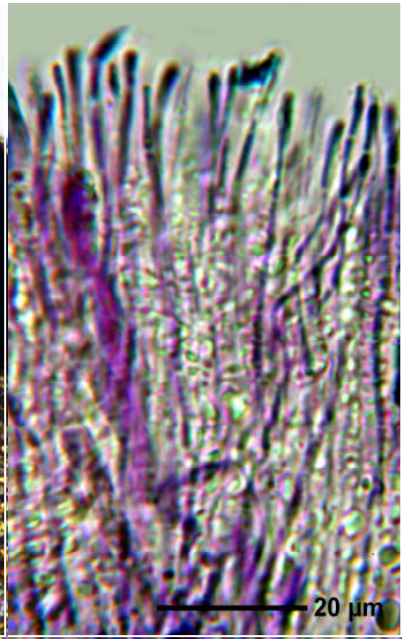
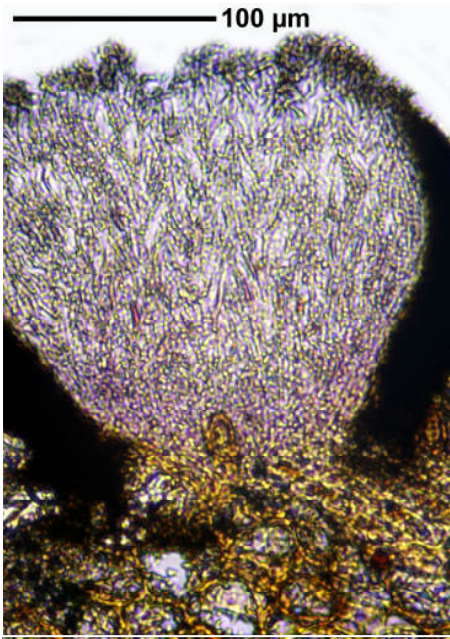


Graphis crebra Vain.

Spores hyaline, old somewhat grey, 6-9 septate, 20-45 μm long, I+ blue. Hymenium interspersed. Excipulum only sideways carbonized. Thallus K+ yellow>red, norstictic acid. Pantropical.

[14389], Seychelles, Praslin, Mündung des Cote Or River, östlich von Anse Volbert Village, 4°18.996' S, 55°44.780' E, 2 m, auf Cocos. Leg. Schumm & Frahm 29.09.2008, det. Aptroot 2008.





10 µm

Graphis crebra