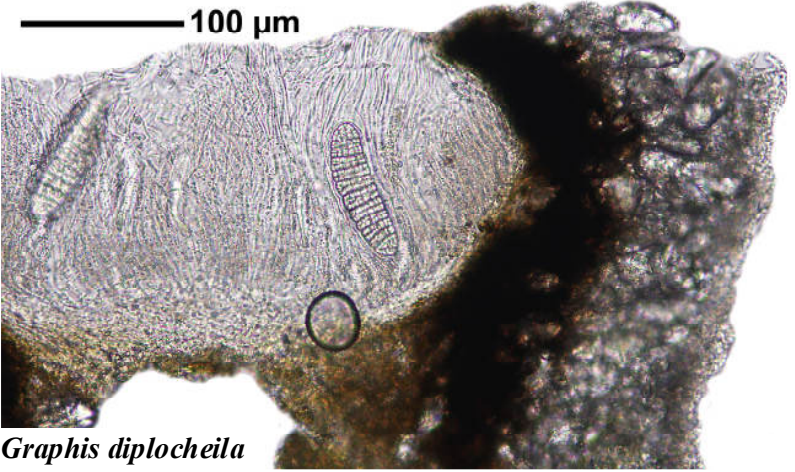
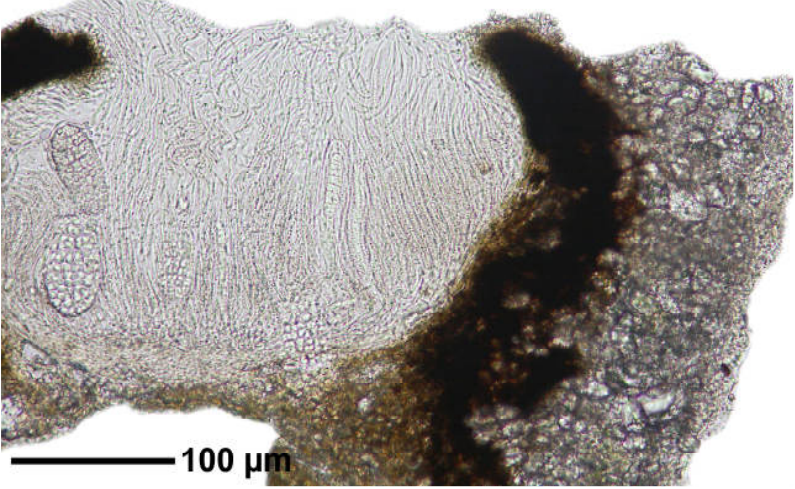
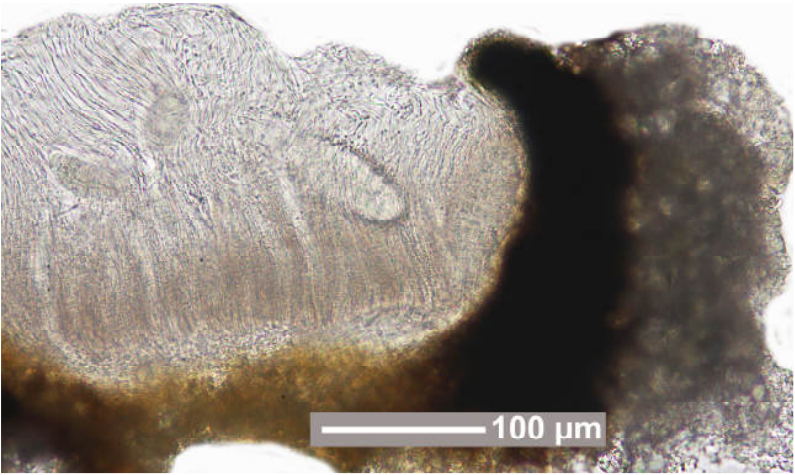


Graphis diplocheila Vain.

Thallus pale yellowish grey, powdery. Lirellae nearly immersed to prominent, with thick thalline margin. Excipulum only laterally carbonized. Hymenium densely inspersioned. Ascospores muriform, 1/ascus, J+ blue, 50-80(-175) x 20-33(-50) μm . Chemistry: Thallus K+ orange, C-, P-, UV+ yellowish white.

[7391], Philippinen, Negros, Prov. Negros Oriental, beim Mt. Talinis (Cuernos de Negros), Valencia Barangay Lunga, 9°16.676' N, 123°13.839' E, 540 m. Leg. Schumm 08.08.2000, det. Aptroot 2009.

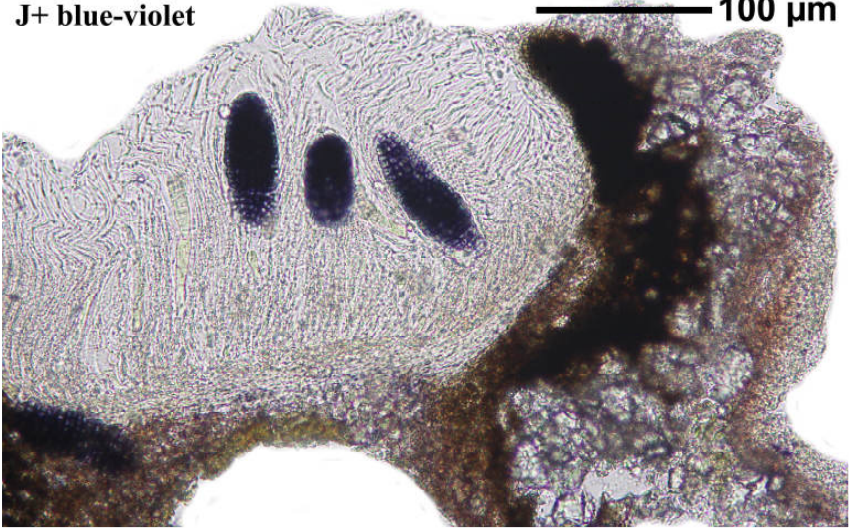




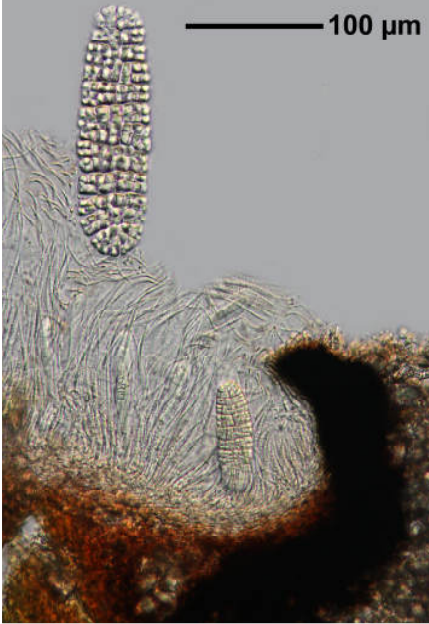
Graphis diplocheila

J+ blue-violet

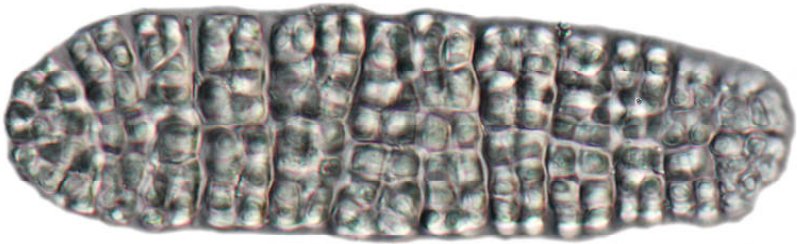
100 μm



100 μm



Graphis diplocheila



— 20 μm !