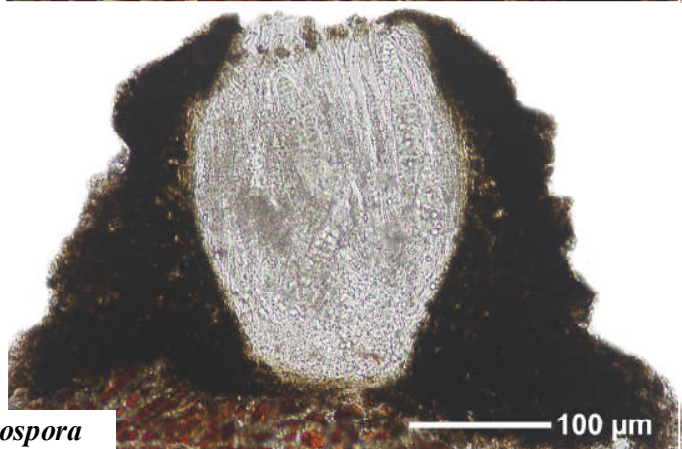
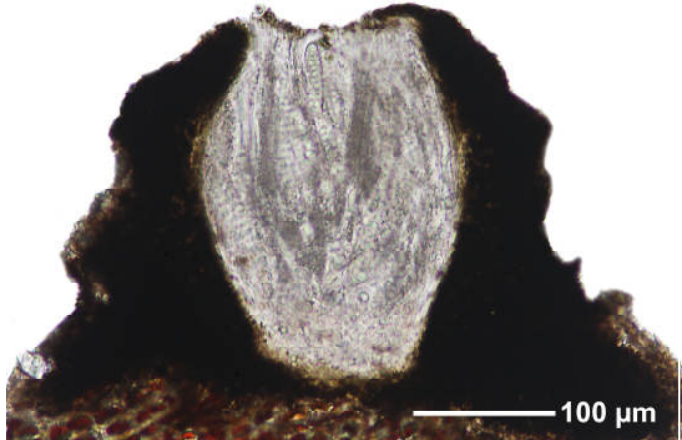
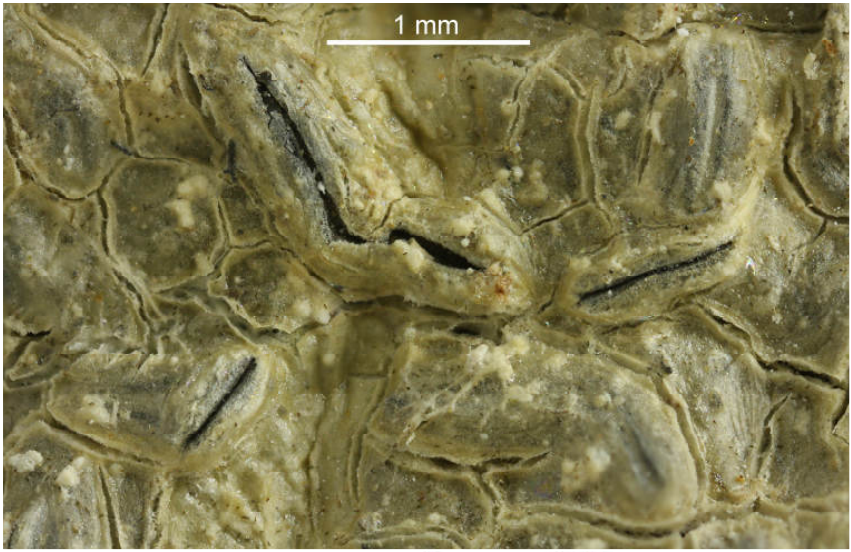


***Graphis phaeospora* Vain.**

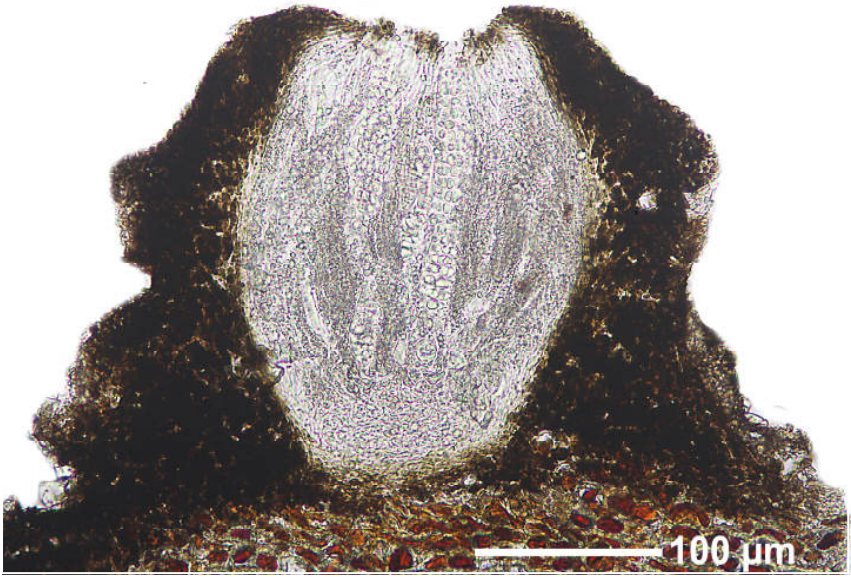
Thallus grey-green, areolate. Lirellae first immersed then prominent, and carbonized lips increasingly free. Excipulum completely carbonized (in thin 9 μm sections the base only brown). Hymenium inspersed. Ascospores colourless, muriform, 1-4/ascus, 20-22 segments with 2-4 lumina, J+ violet, 93-127 x 20-23 μm . Chemistry: cortex and medulla K-, P-, TLC: nil.

[6962], Philippinen, Mindanao, Prov. Misamis Oriental, südwestlich Gingoog City, Barangay Lunutan, 08°42.510' N, 125°01.241' E, 1120 m und am Weg auf den Mt. Lumot (Via Haruhay Trail) bis zum Zwischencamp im trop. Bergregenwald 08°40.713' N, 125°01.649' E, 1680 m. Leg. Schumm 24.08.1999, det. K. Kalb 2011.

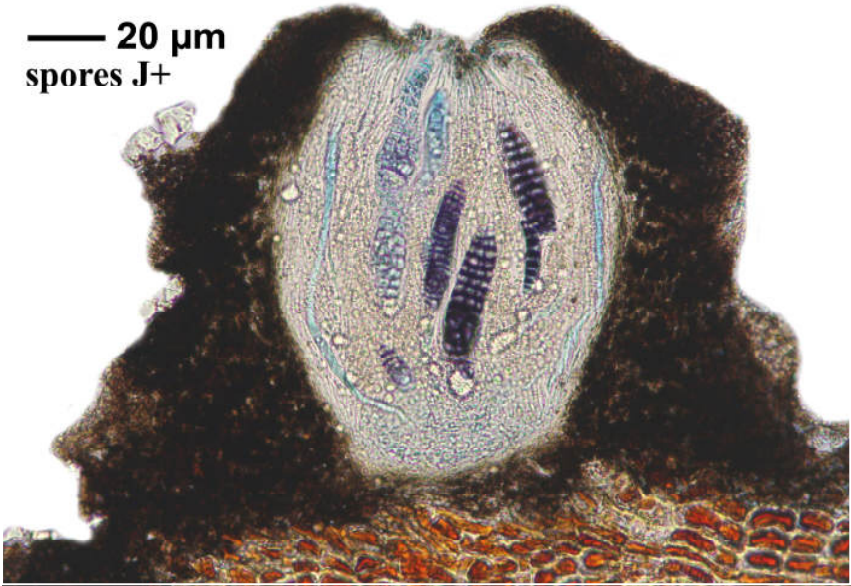




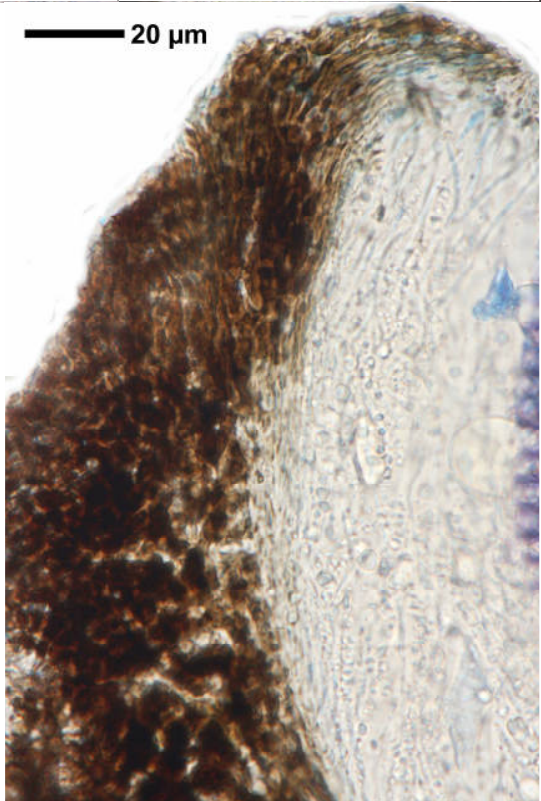
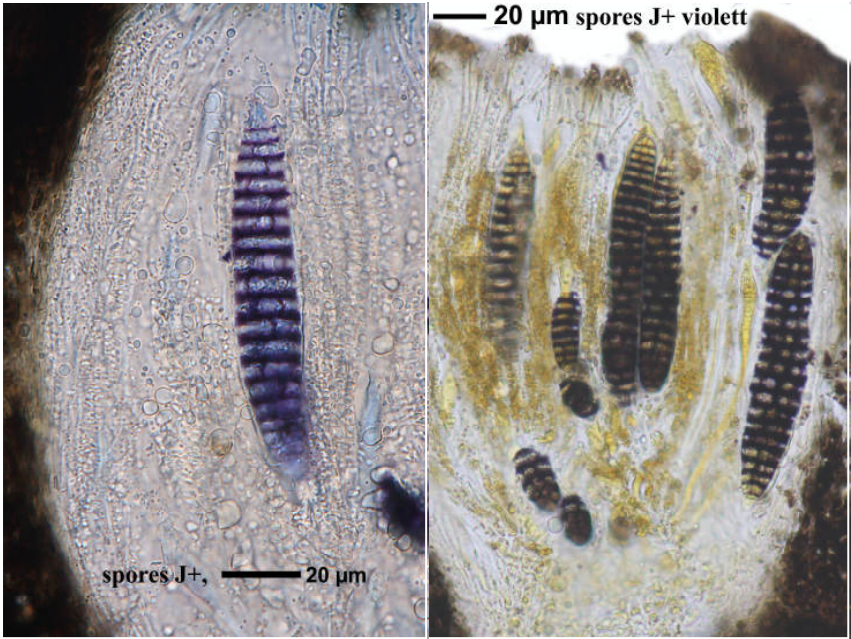
Graphis phaeospora



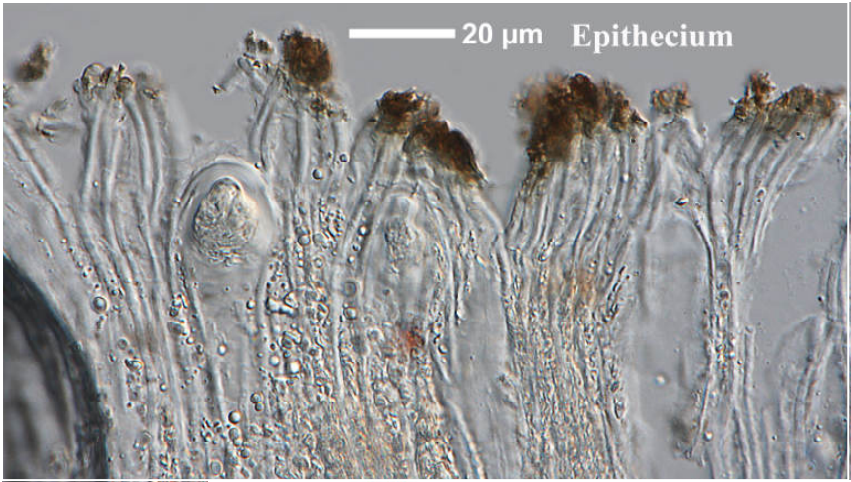
— 20 µm
spores J+



Graphis phaeospora



Graphis phaeospora



Graphis phaeospora