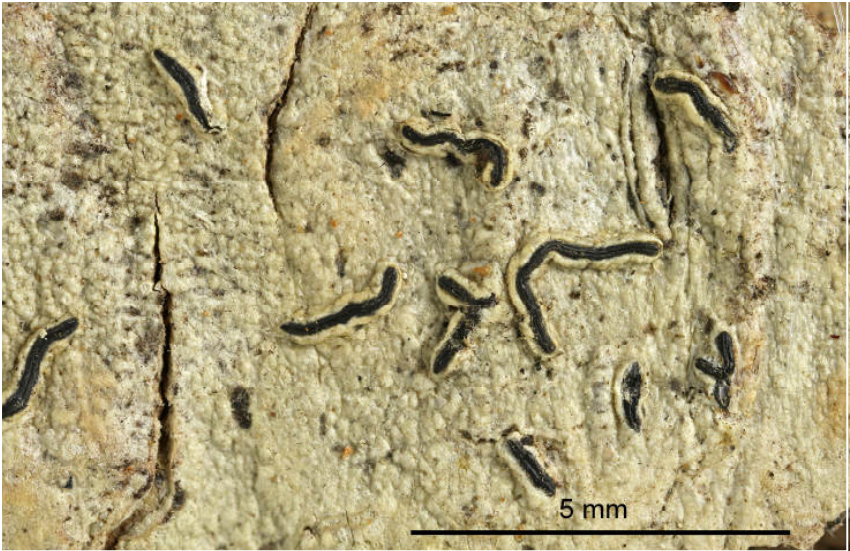
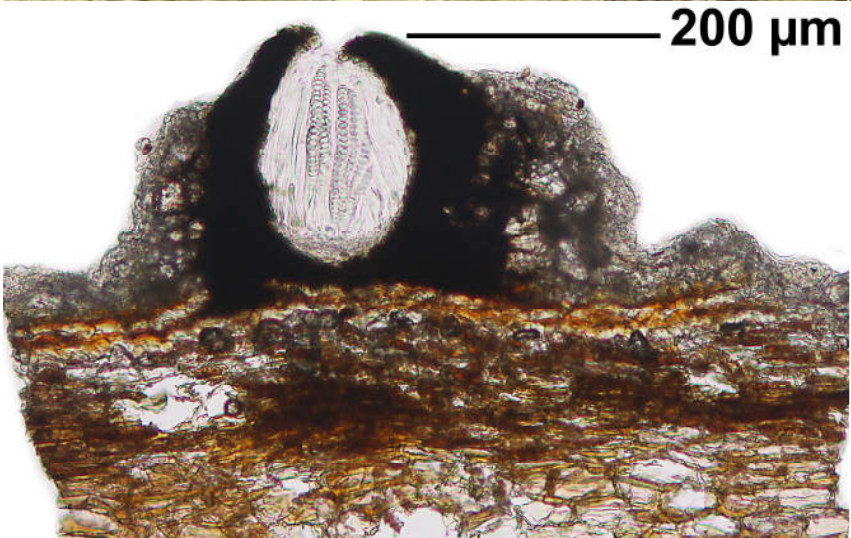


Graphis rustica Kremp.

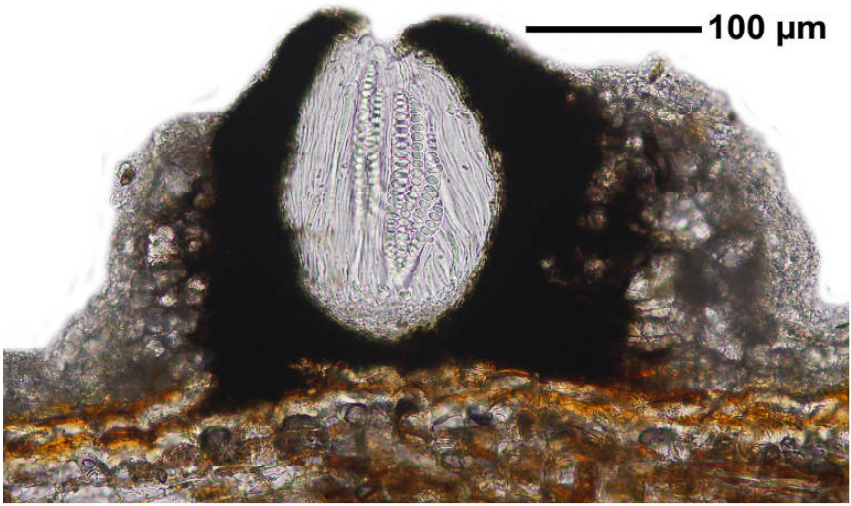
Lirellae sessile, with thick lateral thalline margin. Labia not striate. Excipulum completely carbonized. Hymenium not inspersed. Ascospores hyaline, 8/ascus, transverse 16-18-septate, J+ blue, 65-80 x 10 μm . Chemistry: UV-, stictic acid. Pantropical. Lit. Archer (2006, Bibl. Lichenol. 94)

[7952], Philippinen, Leyte, Prov. Leyte, Lake Kasudsuran (11°01.539' N, 124°44.931' E, 740 m) bei Barangay Liberty (Ormoc-City). Leg. Schumm 23.08.2000, det. Schumm 2011.

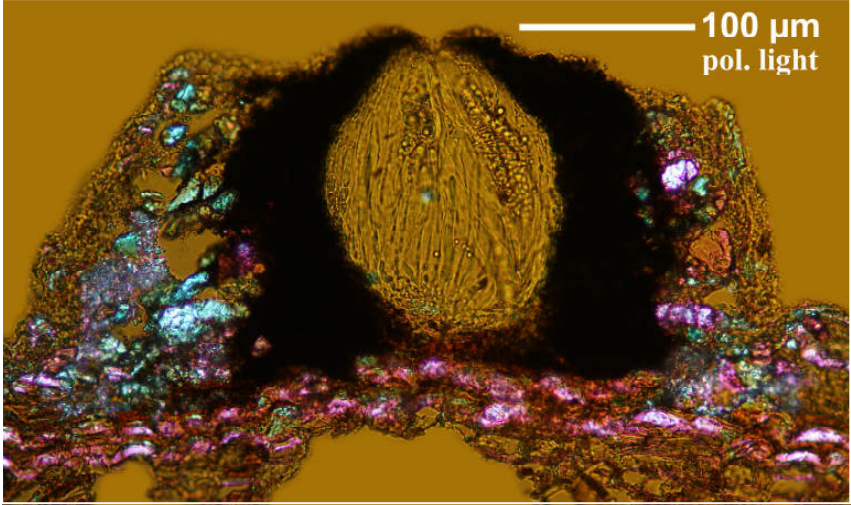
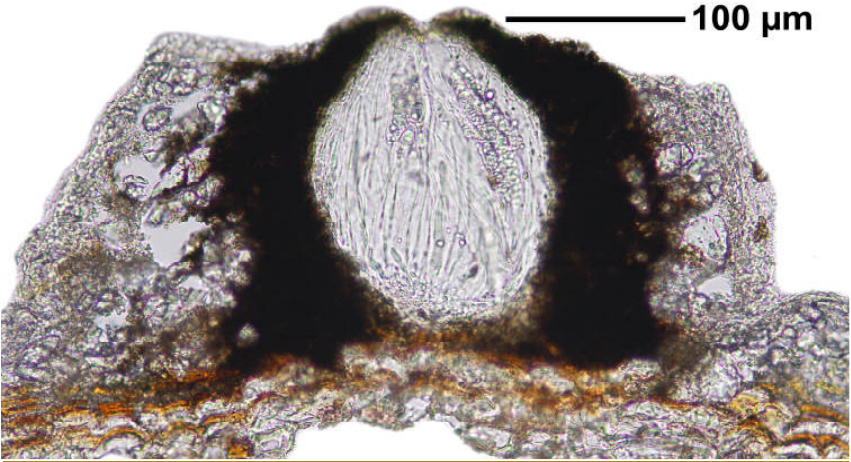




Graphis rustica



Graphis rustica

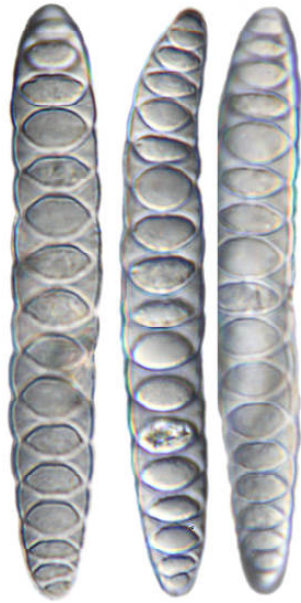




— 10 μm



— 10 μm



— 10 μm



— 10 μm
J+ blueviolet