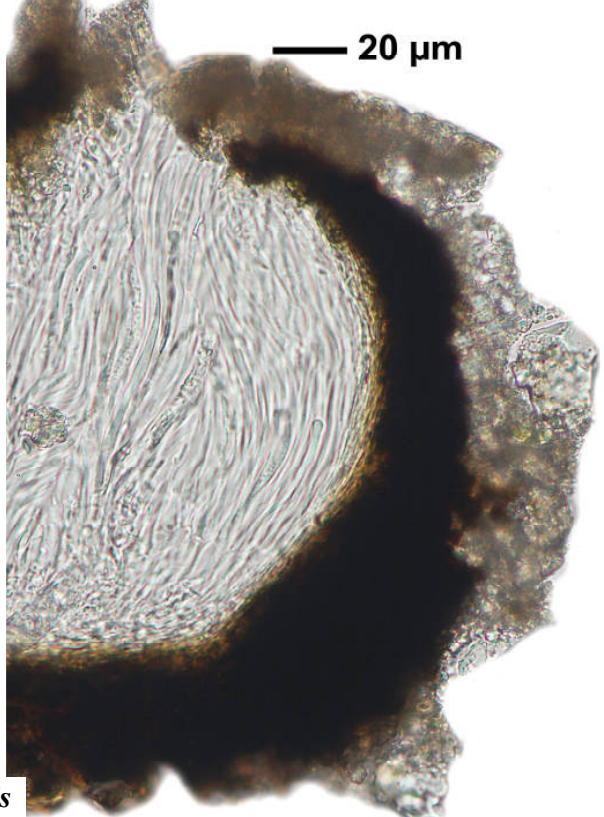
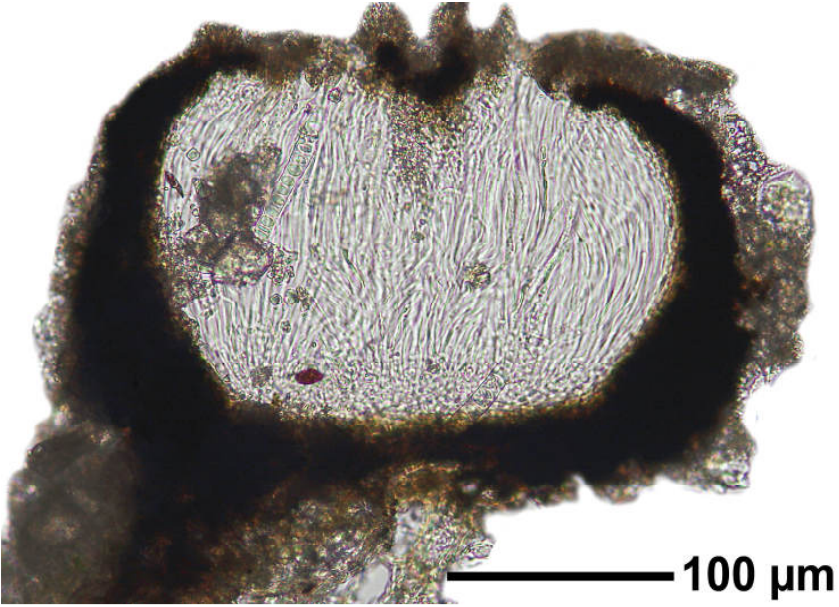


Graphis subassimilis Müll.Arg.

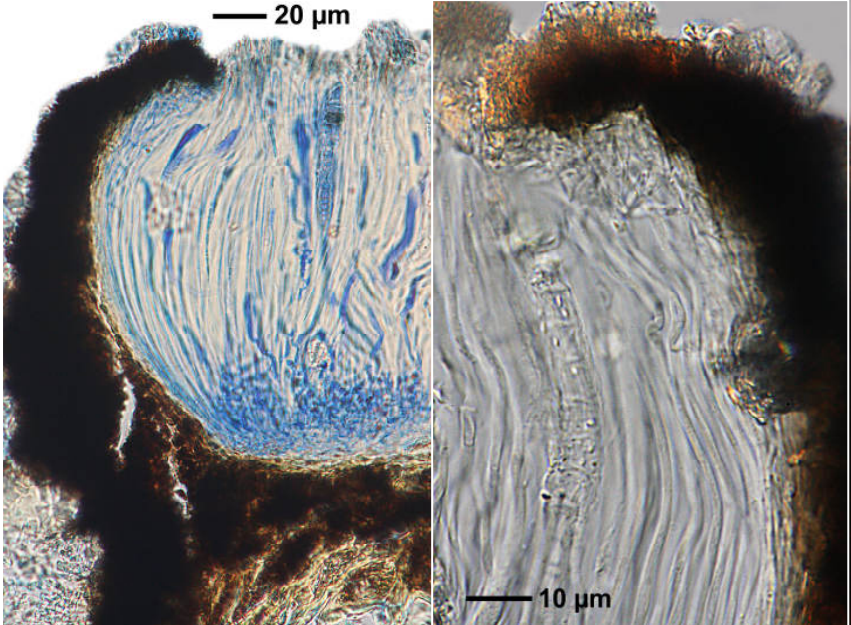
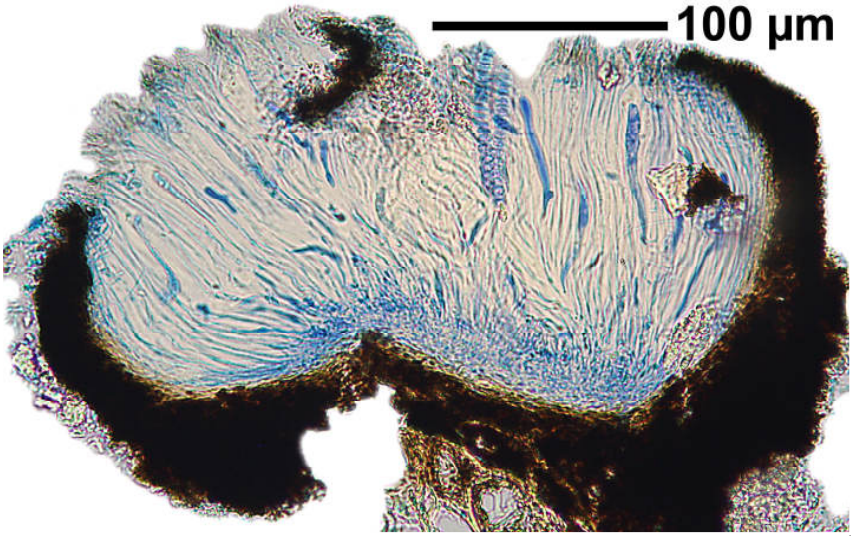
Labia entire, excipulum completely carbonized, hymanium clear, ascospores transversely septate, 50-70 x 7-9 μm , 10-18 locular, lirellae with lateral thalline margin, labia thinly white pruinose. Chemistry: thallus K+ yellow, UV- (somewhat grey), TLC: nil (stictic, salazinic, norstictic acids absent).

[6939], Philippinen, Mindanao, Provinz Bukidnon, westlich Malabalay, tropischer Regenwald am Mt. Kitanglad ab Zwischen-Campsite, 08°09.637' N, 124°55.871' E, 1870-2800. Leg. Schumm 19.08.1999, det. Archer 23.8.2003.

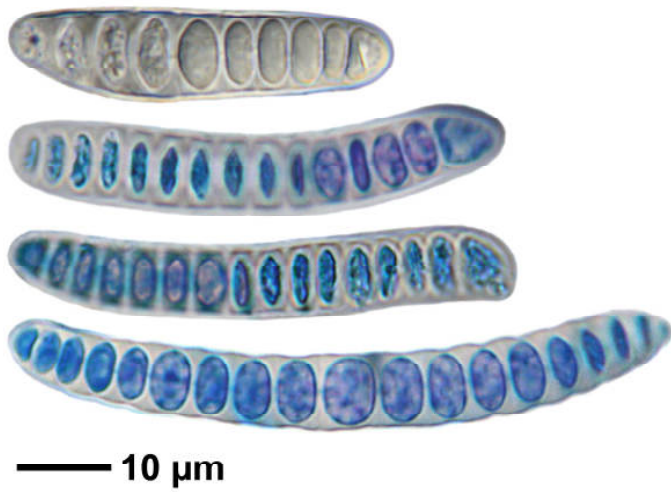
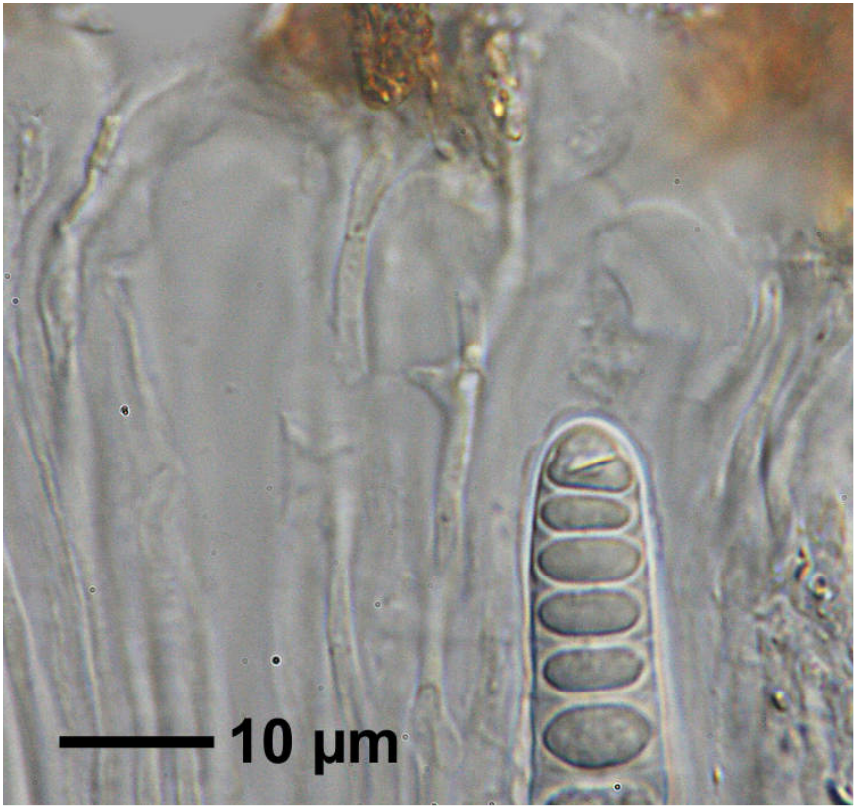




Graphis subassimilis



Graphis subassimilis



Graphis subassimilis