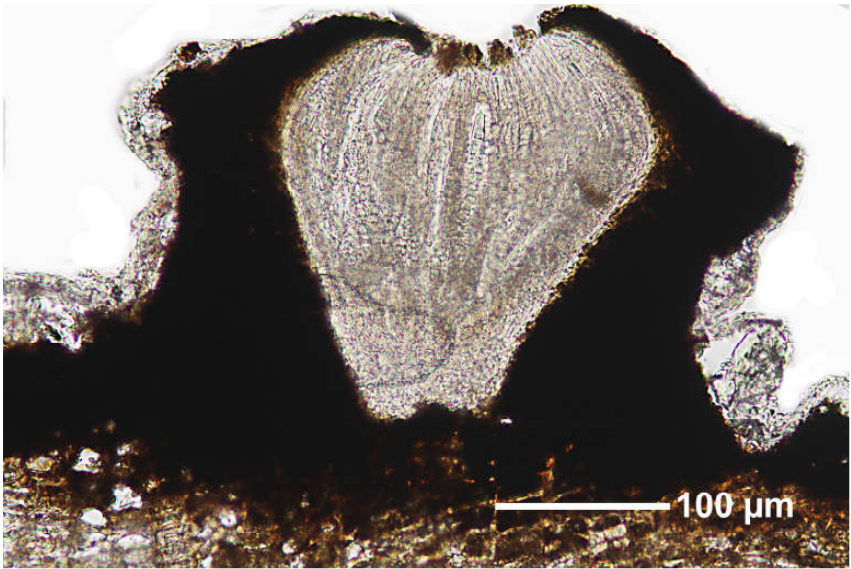
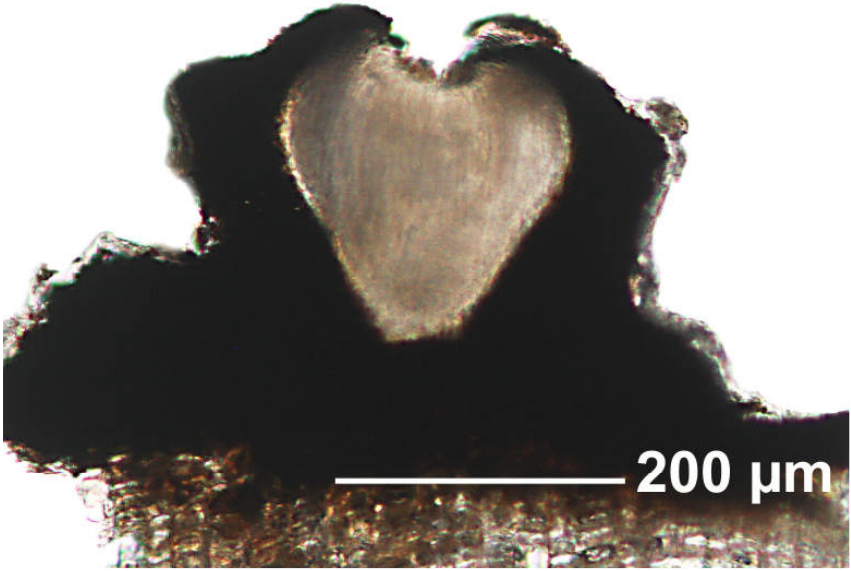


Graphis subflexibilis Lücking & Chaves

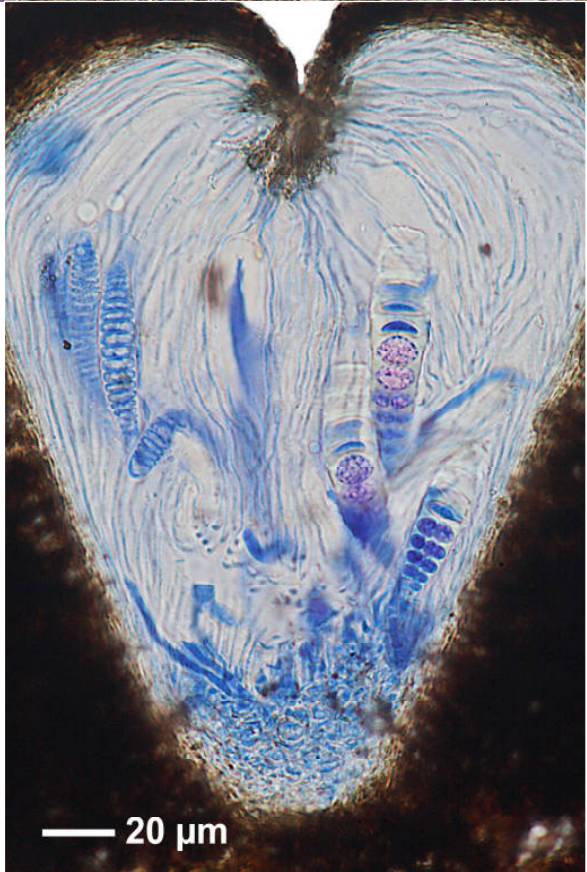
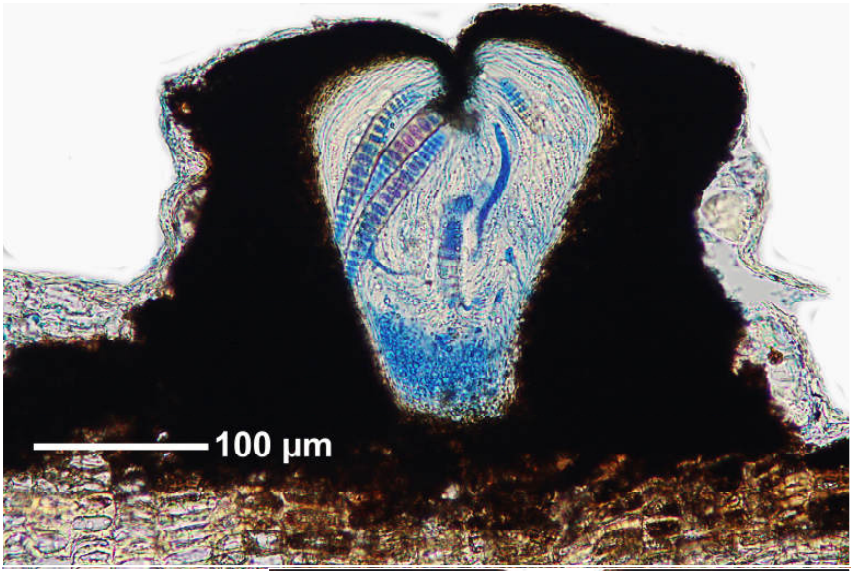
Labia entire or striate. Excipulum completely carbonized, thinly covered by thallus. Hymenium densely inspersed (the difference to *G. vestitoides*). Ascospores 21-23-transverse-septate, but end cells with some longitudinal septa, 90-110 x 20-23 μm , J+ violet. Chemistry: K+ weakly yellowish, P- or weakly yellowish; TLC: nil. Lit. Lücking et al. (2008, Fieldiana)

[6956], Philippinen, Mindanao, Prov. Misamis Oriental, südwestlich Gingoog City, Barangay Lunutan 08°42.510' N, 125°01.241' E, 1120 m und am Weg auf den Mt. Lumot (Via Haruhay Trail) bis zum Zwischencamp im trop. Bergregenwald bei 08°40.713' N, 125°01.649' E, 1680 m. Leg. Schumm 24.08.1999, det. Schumm 2011.

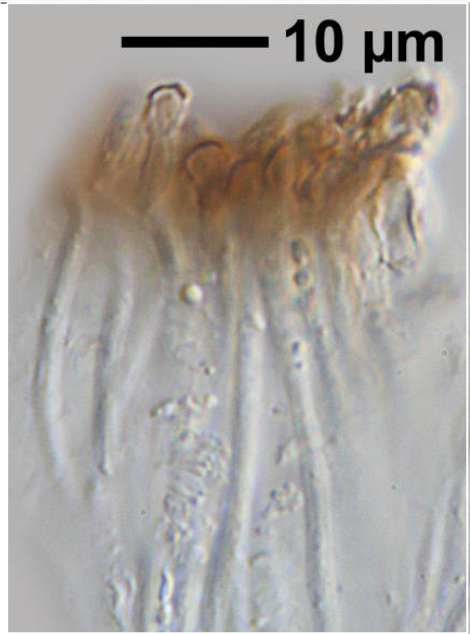
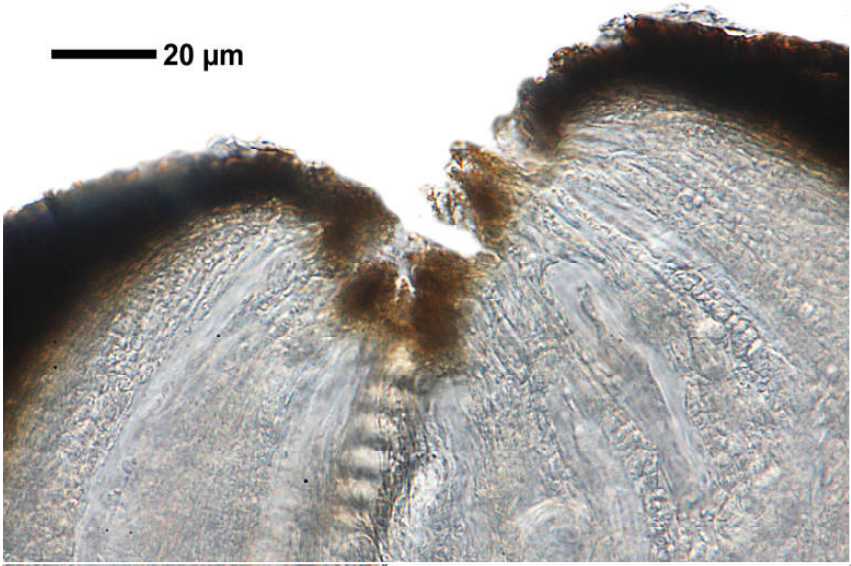




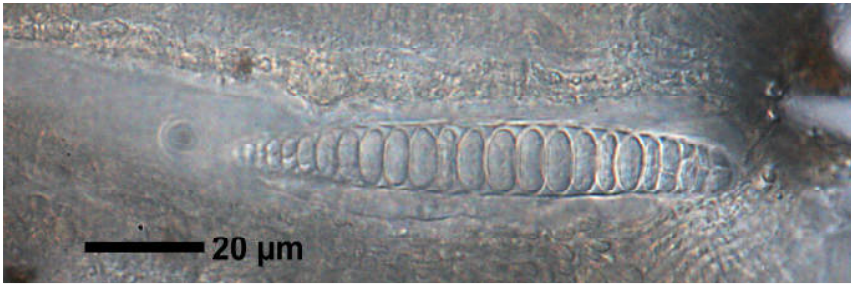
Graphis subflexibilis



Graphis subflexibilis



Graphis subflexibilis



Graphis subflexibilis