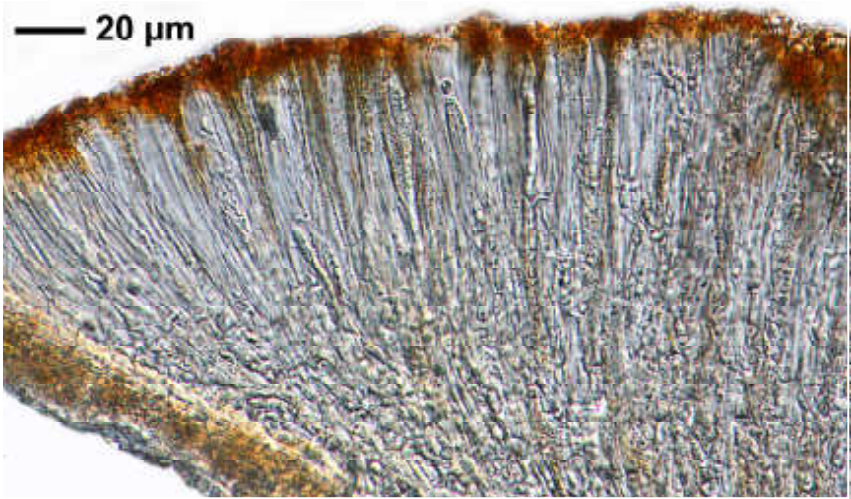
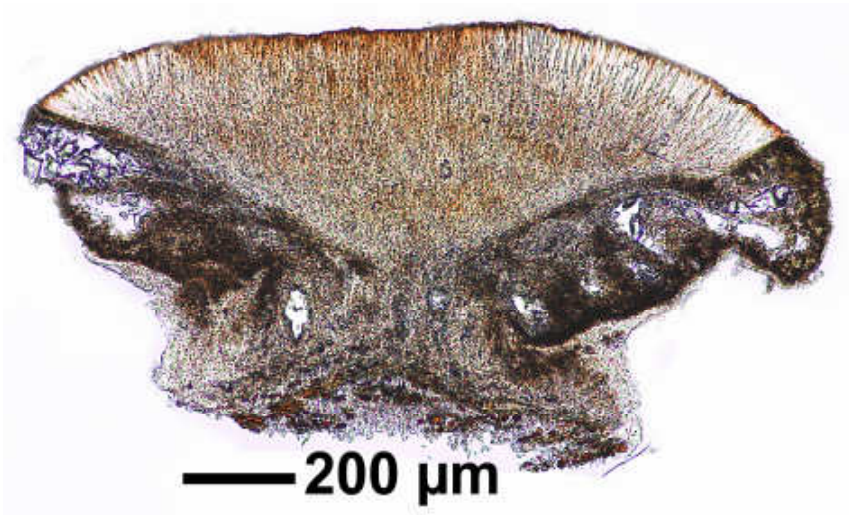


Haematomma collatum (Stirt.) C.W.Dodge

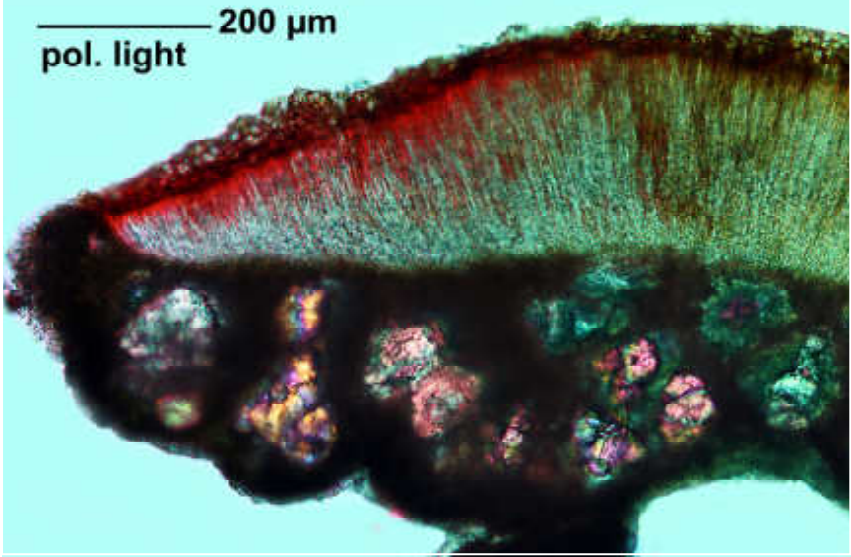
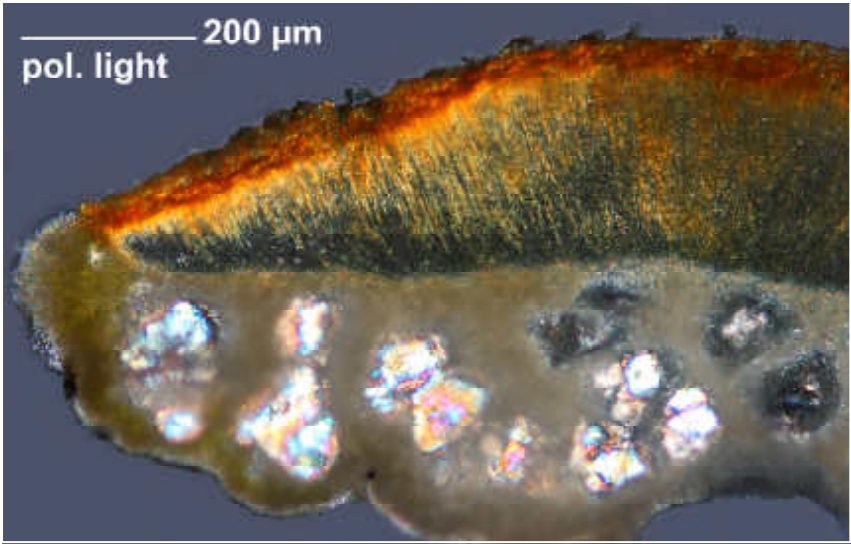
Thallus warty granulose. Soredia and isidia absent. Apothecia red. Epithecium with russulone (K+ durable red solution with tiny red crystals). Ascospores 52-53 x 5-6 μm , appr. (5-7(-8)-septate, curved. Chemistry: thallus UV-, atranorin (min), russulone sphaerophorin, isosphaeric acid.

[15525], La Reunion, Anse des Cascades, meist auf Cocos-Palmen; 21,18511° S, 55,82711° E, 0 m. Leg. Schumm & Frahm 14.09.2009, det. Schumm 02.2010.

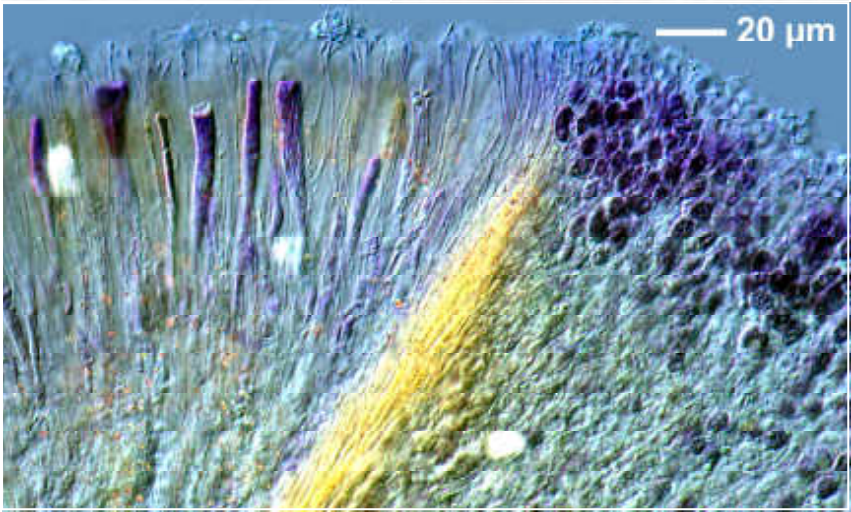
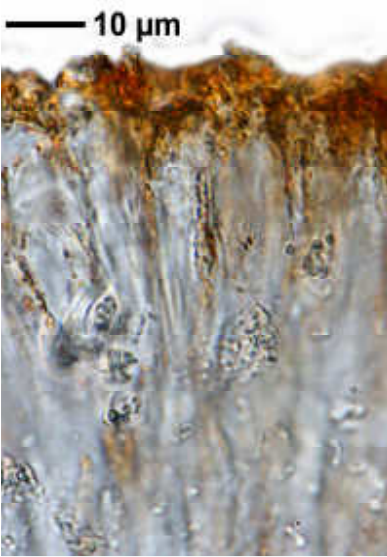




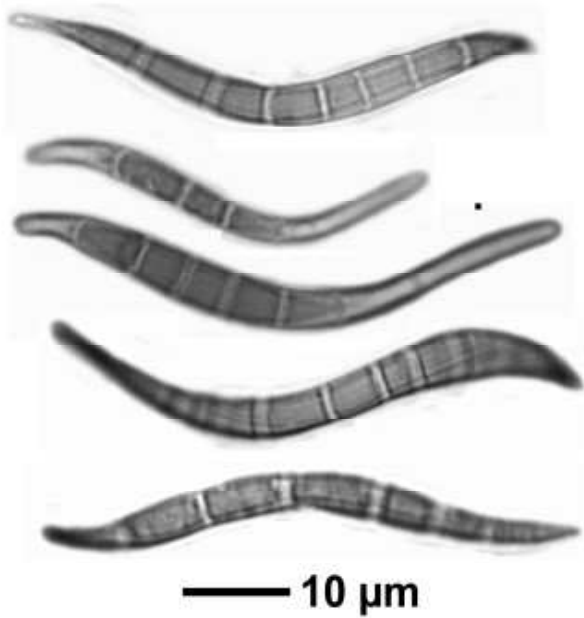
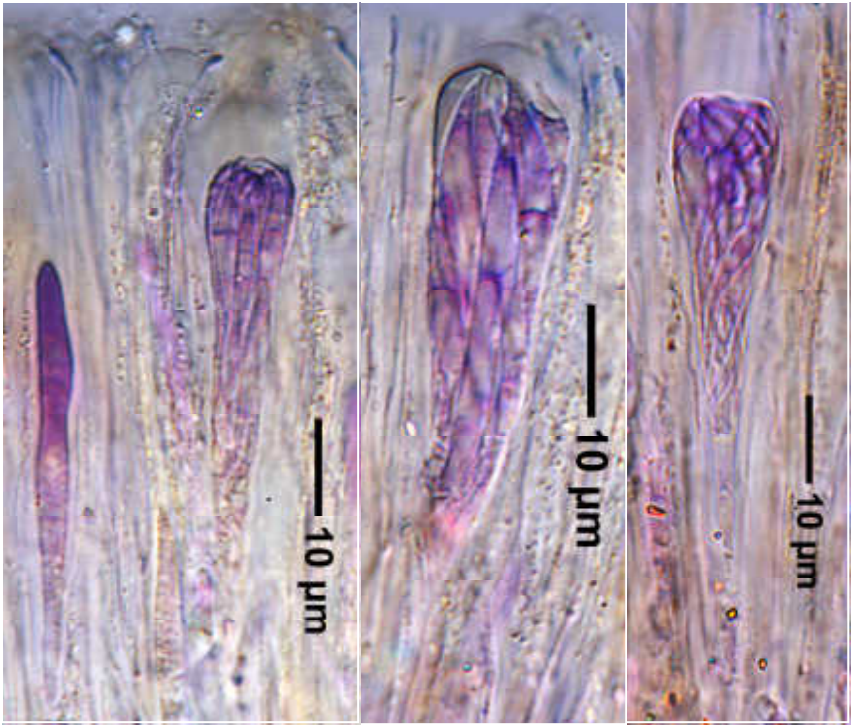
Haematomma collatum



Haematomma collatum



Haematomma collatum



Haematomma collatum