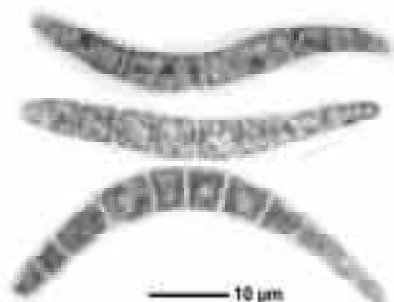
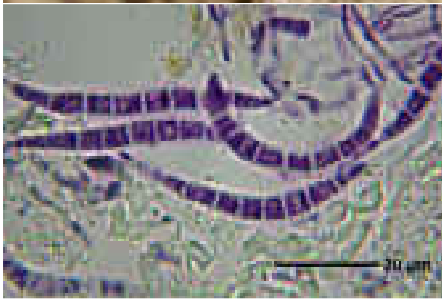
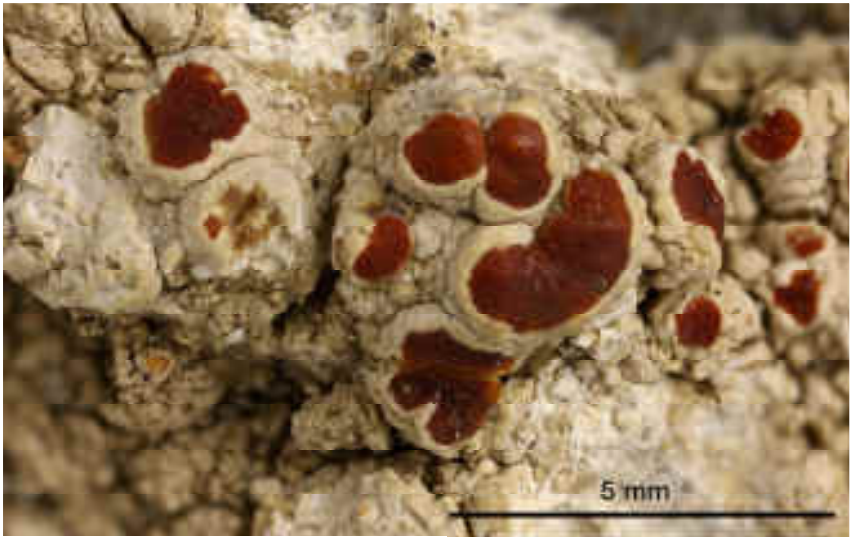
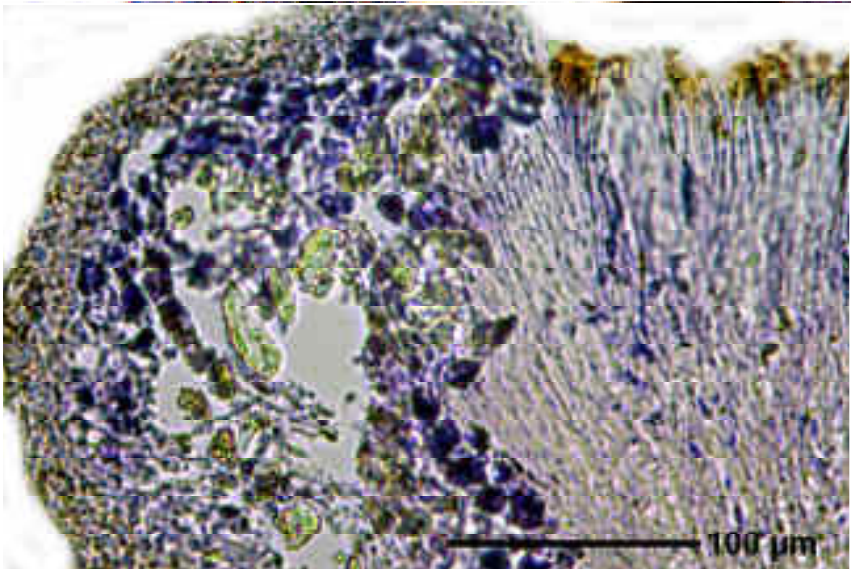
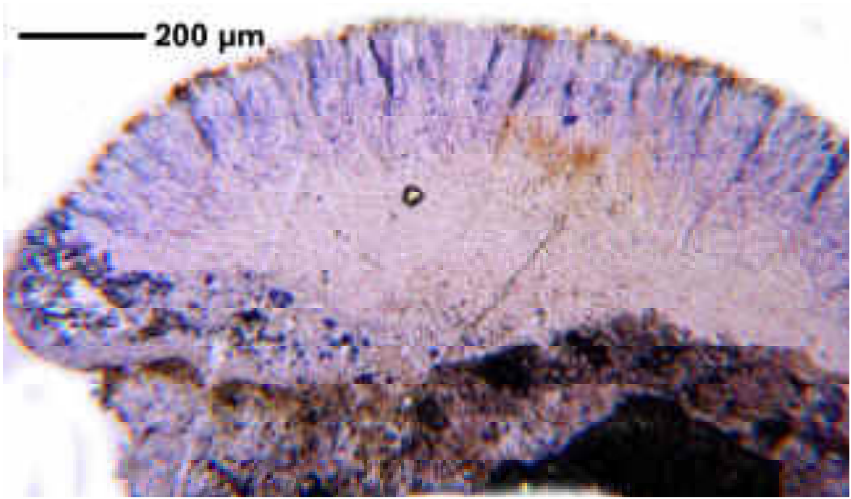


Haematomma nemetzii J.Steiner

Thallus grey, greenish grey, warty, deeply cracked. Soredia and isidia absent. Apothecia red, not pruinose, bulging, 0.5-3 mm, somewhat immersed. Epithecium K+ durable red (russulone). Ascospores hyaline, 8/ascus, 3-7-septate, straight or curved, 25-50 x 4.5-8 μ m. Saxicolous. Chemistry: atranorin, psoromic acid, russulone, roccelic acid (tr), 2'-O-demethylpsoromic acid (\pm tr). Lit.: Staiger & Kalb (1995)

[11974], Türkei, Southwest Anatolia, Province of Mugla, Pinus nigra dominated pinewood in the fog-belt around Kosantepe Pass at Besparmak Dag between Narhisar and Cukurköy, covering larger rain-protected, overhanging gneissose rocks, 850 m. Leg. V. John 03.1983, det. V. John. Ex Follmann: Nr. 547 Lichenes Exsiccati Selecti Ab Instituto Botanico Universitatis Coloniensis Editi. (test TLC Schumm).





Haematomma nemetzii