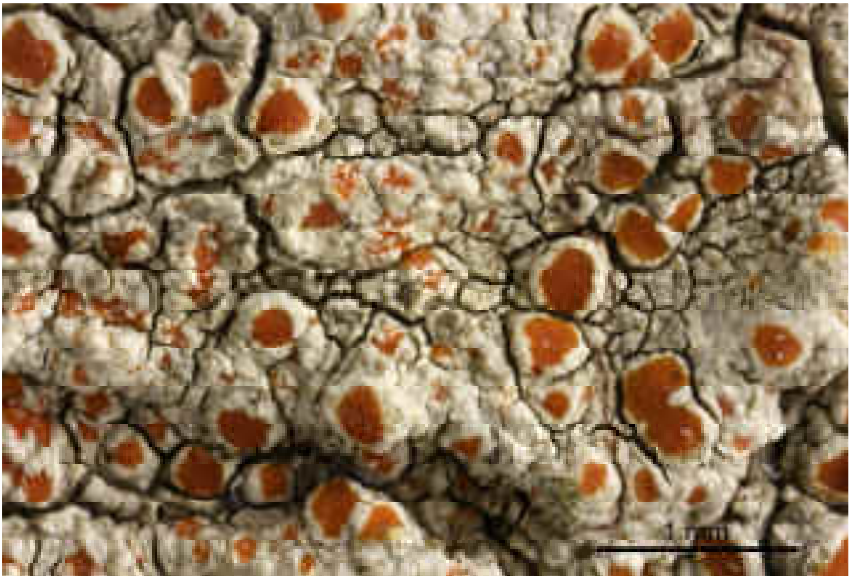
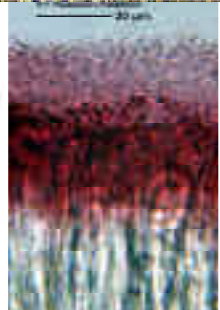
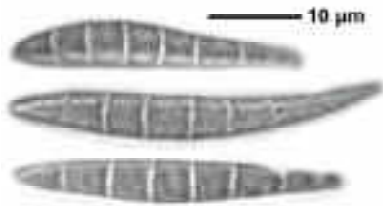
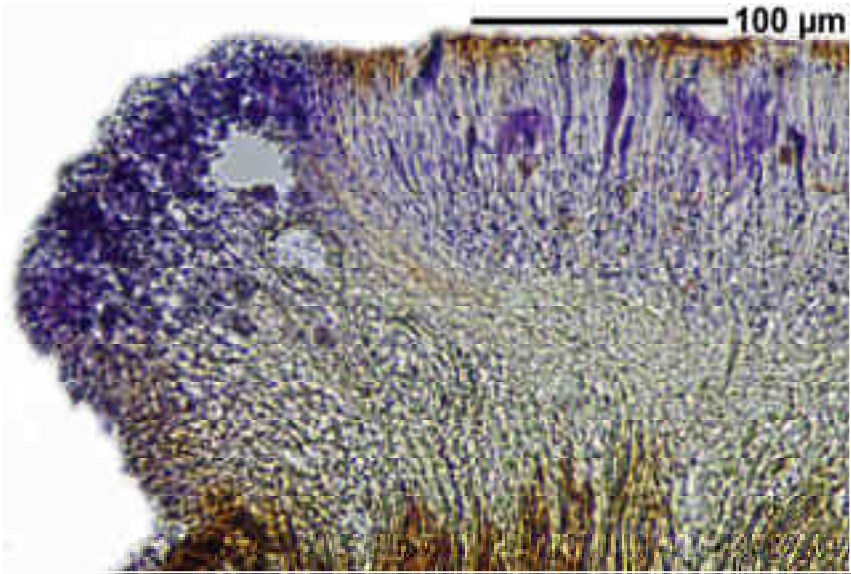
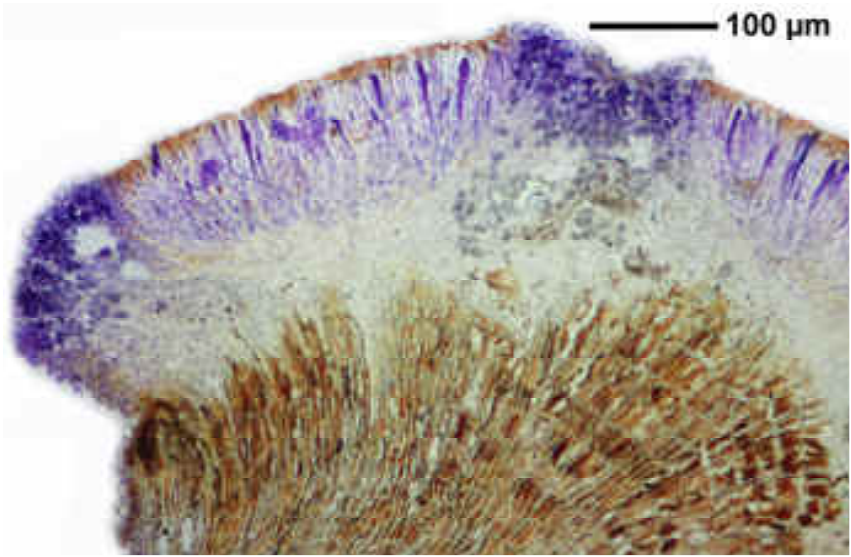


*Haematomma persoonii* (Fée) A.Massal.

Thallus whitish to greenish grey, even to warty, ± cracked, 0,3-0,5 mm thick. Soredia and isidia absent. Apothecia sessile to immersed, 0.3-1.5 mm wide. Disc red, not pruinose. Thalline margin simple to somewhat crenulate. Epithecium K+ durable red (russulone). Ascospores hyaline, 8/ascus, 7-8-cellular, straight or somewhat „S“-curved, 30-50 x 3.5-5 µm. Chemistry: atranorin, russulone, sphaerophorin (±), isosphaeric acid (±). K+ gelb. Corticolous, pantropical. Lit. Staiger & Kalb (1995)

[2891], Nordargentinen, Prov. Corrientes: kleinflächig an verhältnismäßig glatten Borkenschollen halbschattiger Mittelstämme älterer Laubbäume im offenen Regenwald im Ochrolechietum austroamericanae, 300 m, pH 6,5, Tabay im Departamento Concepción. Leg. M.M. Arbo 09.1980. Follmann: Nr. 346 Lichenes Exsiccati Selecti A Instituto Museo Historiae Naturalis Casselensi Editi, distributed as *Haematomma puniceum* (already corr. by Staiger & Kalb, 1995, p. 157).





*Haematomma persoonii*